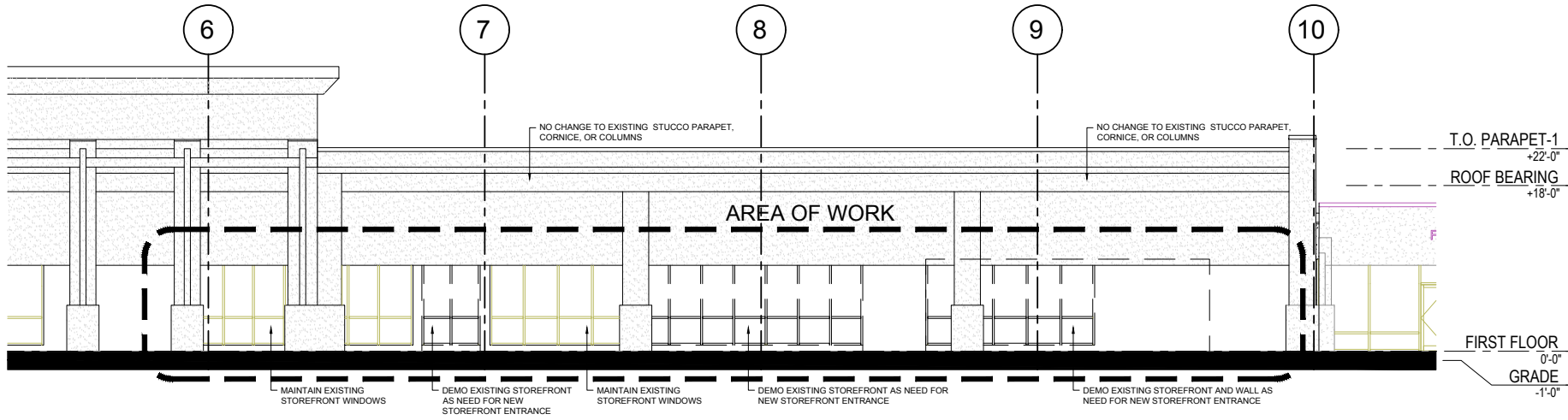
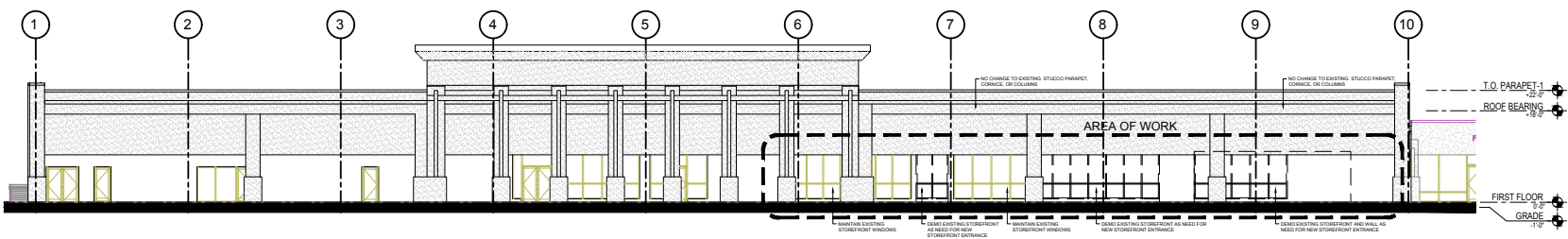


ORIGINAL LAYOUT SIZE: 24x36



**2** EXISTING & DEMO FRONT (NORTH) ELEVATION, ALONG JOHNNIE DODDS BLVD & PARKING LOT - ENLARGED  
 3/16" = 1'-0"  
 NOTE: CHANGES LIMITED TO STOREFRONT WINDOWS ONLY AND AT AREA OF WORK ONLY. NO COLONNADE, CORNICE, OR PARAPET CHANGES



**1** EXISTING & DEMO FRONT (NORTH) ELEVATION, ALONG JOHNNIE DODDS BLVD & PARKING LOT  
 3/32" = 1'-0"



LFK ARCHITECTS, LLC  
 806 JOHNNIE DODDS BLVD  
 SUITE 200  
 MOUNT PLEASANT, SC 29564  
 LOUISE F. ANGLIST, III, AIA  
 www.lfkarchitects.com  
 phone: 403.330.3240

JOB NUMBER: 22-064
DESIGN: JIB
CHECKED:

REVISION NOTES:

UPFIT FOR EAST COOPER PLAZA  
 EAST COOPER PLAZA 627 JOHNNIE DODDS BLVD.  
 MT. PLEASANT, SC 29564  
 EXISTING & DEMO FRONT ELEVATION

SHEET NUMBER & TITLE

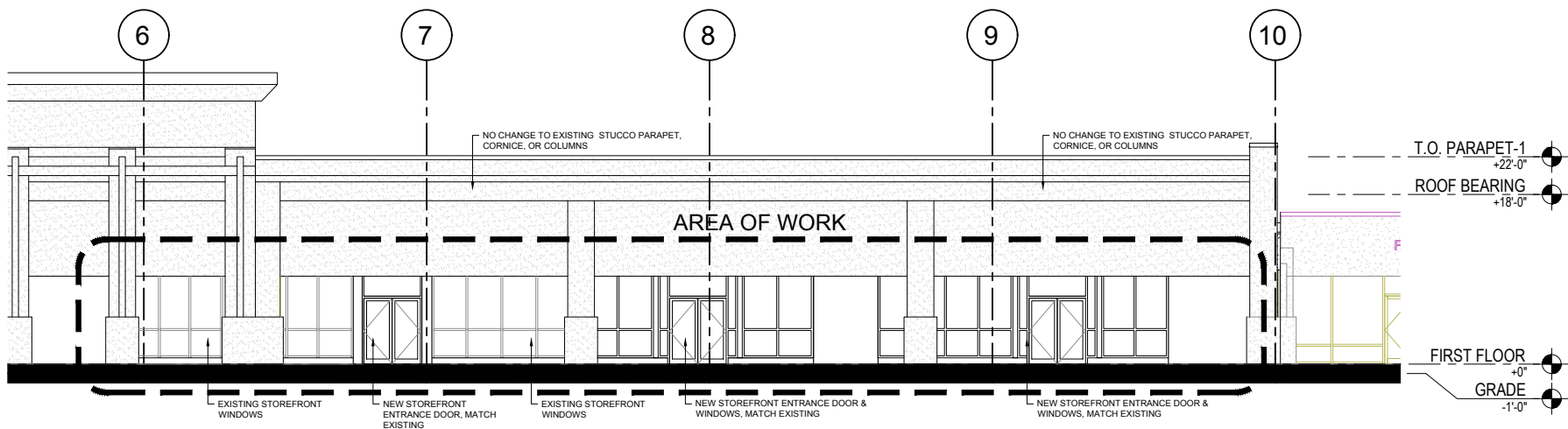
**A200**

SCHEMATIC  
 08.02.2023

COPYRIGHT 2023, LFK ARCHITECTS, LLC

ORIGINAL LAYOUT SIZE: 24x36

COPYRIGHT 2023 LFK ARCHITECTS, LLC



1

### PROPOSED FRONT (NORTH) ELEVATION, ALONG JOHNNIE DODDS BLVD & PARKING LOT

3/16" = 1'-0"

NOTE: CHANGES LIMITED TO STOREFRONT WINDOWS ONLY AND AT AREA OF WORK ONLY. NO COLONNADE, CORNICE, OR PARAPET CHANGES



LFK ARCHITECTS, LLC  
806 JOHNNIE DODDS BLVD  
SUITE 200  
MOUNT PLEASANT, SC 29564  
LOUISE F. ANIGHT, III, AIA  
louise@lfkarch.com  
phone: 403.330.0940

JOB NUMBER: 22-264
DRAWN: JIB
CHECKED:

REVISION NOTES:

UPFIT FOR EAST COOPER PLAZA  
EAST COOPER PLAZA 627 JOHNNIE DODDS BLVD.  
MT. PLEASANT, SC 29564  
PROPOSED FRONT ELEVATION

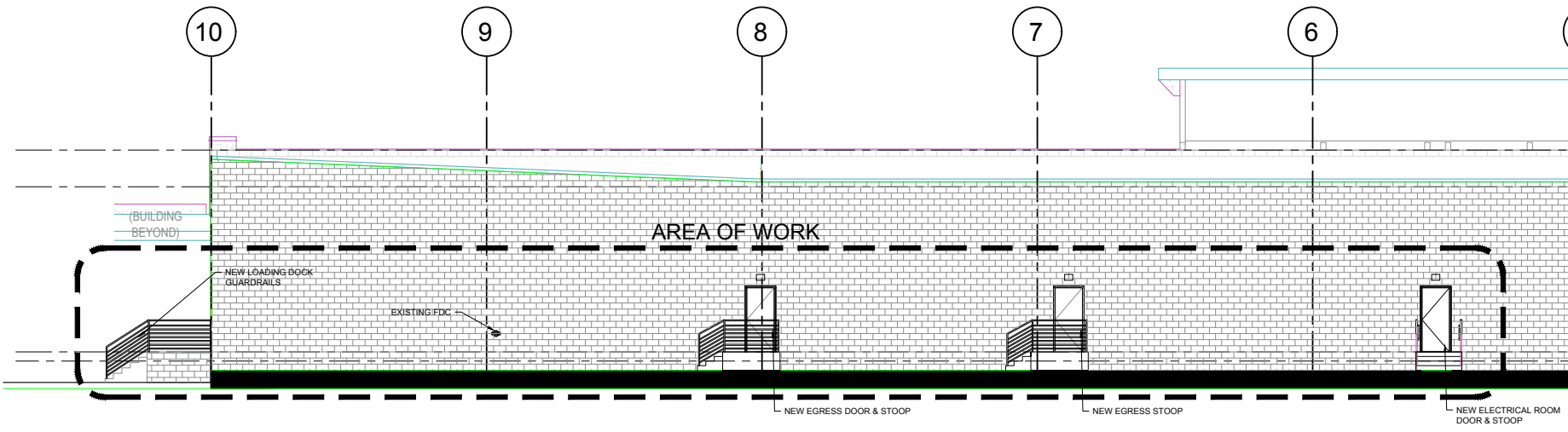
SHEET NUMBER & TITLE

A201

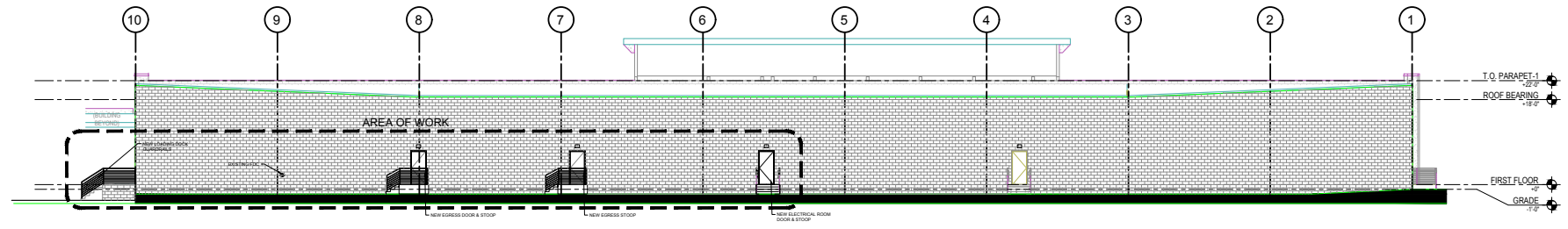
SCHEMATIC  
08.02.2023

ORIGINAL LAYOUT SIZE: 24x36

COPYRIGHT 2023 LFK ARCHITECTS, LLC



**2** PROPOSED REAR (SOUTH) ELEVATION - ENLARGED  
 3/16" = 1'-0"  
 NOTE: CHANGES LIMITED TO ADDING REAR DOORS AND STOOPS AND AT AREA OF WORK ONLY.



**1** PROPOSED REAR (SOUTH) ELEVATION  
 3/32" = 1'-0"



LFK ARCHITECTS, LLC  
 806 JOHNNIE DODDS BLVD.  
 SUITE 202  
 MOUNT PLEASANT, SC 29564  
 LOSSE F. ANIGHT, III, AIA  
 LOSSE F. ANIGHT, III, AIA  
 www.lfkarchitects.com  
 phone: 463.330.0440

JOB NUMBER: 22-264
DESIGN: JIB
CHECKED:

REVISION NOTES:

UPFIT FOR EAST COOPER PLAZA  
 EAST COOPER PLAZA 627 JOHNNIE DODDS BLVD.  
 MT. PLEASANT, SC 29564  
 PROPOSED REAR ELEVATION

SHEET NUMBER & TITLE

**A204**

SCHEMATIC  
08.02.2023