

# APACHE & DORSEY

1250 E. APACHE BOULEVARD, TEMPE, ARIZONA 85281

1,648 - 3,967 SF AVAILABLE



**HORTH HONG**

480.426.1670

hhong@camcre.com

2701 E. CAMELBACK RD., #170, PHOENIX, AZ 85016 | 602.489.7990 | WWW.CAMCRE.COM





# PROPERTY SUMMARY

**AVAILABLE** 1,648 - 3,967 SF

- Retail and Office/Medical suites available
- Just south of 202 Freeway
- Walking distance to Arizona State University
- Light rail access
- Very dense population in 1-mile radius

## RETAIL WITHIN 1-MILE RADIUS:

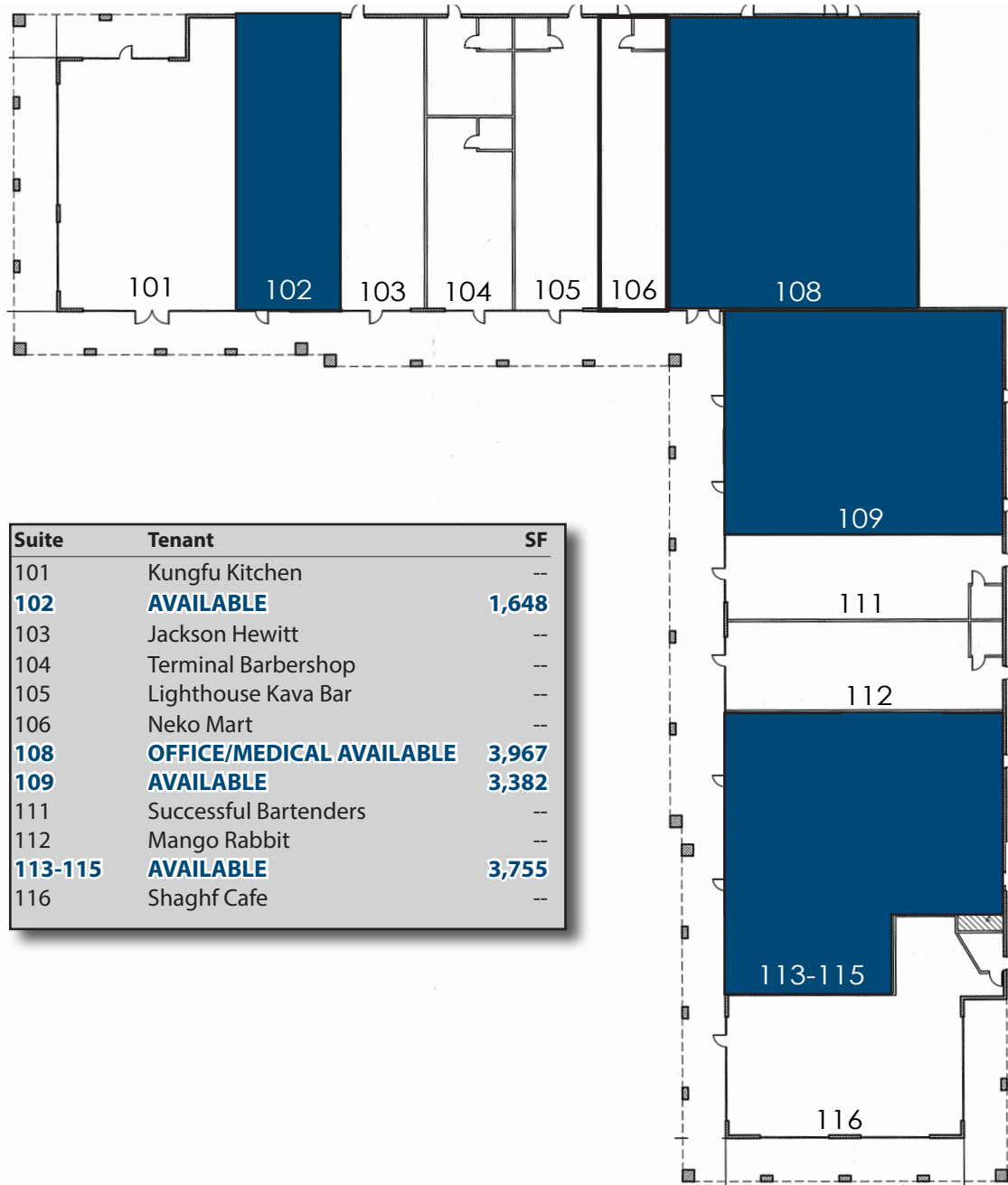


## TRAFFIC COUNTS

**N** Rural Rd: 19,501 VPD      **E** Apache Blvd: 7,180 VPD  
**S** Rural Rd: 19,341 VPD      **W** Apache Blvd: 3,780 VPD



# SITE PLAN



Suite	Tenant	SF
101	Kungfu Kitchen	--
<b>102</b>	<b>AVAILABLE</b>	<b>1,648</b>
103	Jackson Hewitt	--
104	Terminal Barbershop	--
105	Lighthouse Kava Bar	--
106	Neko Mart	--
<b>108</b>	<b>OFFICE/MEDICAL AVAILABLE</b>	<b>3,967</b>
<b>109</b>	<b>AVAILABLE</b>	<b>3,382</b>
111	Successful Bartenders	--
112	Mango Rabbit	--
<b>113-115</b>	<b>AVAILABLE</b>	<b>3,755</b>
116	Shaghf Cafe	--



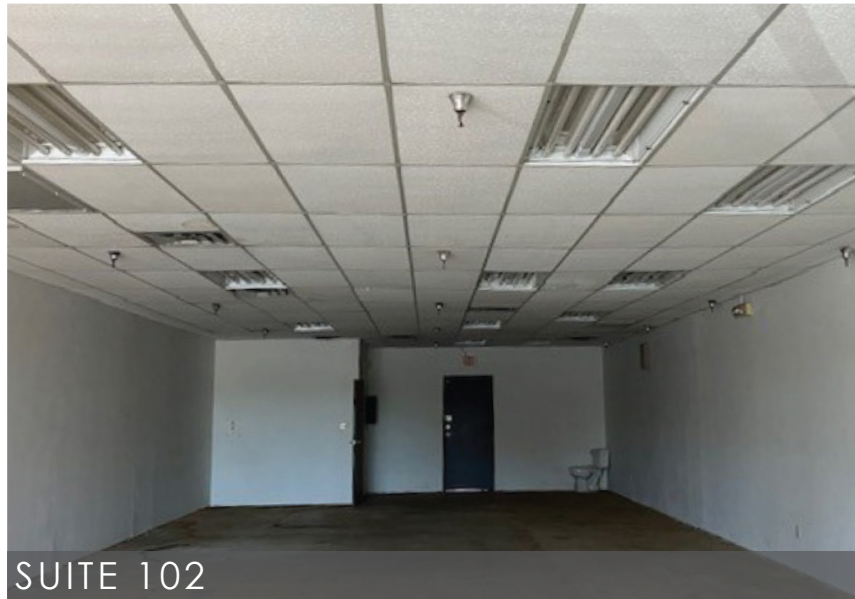
# PHOTOS



SUITE 113-115



SUITE 109



SUITE 102





# DEMOGRAPHICS



POPULATION	1 MILE	3 MILES	5 MILES
Total Population	31,456	150,275	365,592
Average Age	25.0	31.2	33.3
Average Age (Male)	25.0	30.2	32.4
Average Age (Female)	24.9	32.6	34.4



AVG. HH INCOME	1 MILE	3 MILES	5 MILES
Average HH Income	\$44,522	\$58,957	\$64,511
Average House Value	\$93,284	\$193,771	\$201,514



HH UNITS	1 MILE	3 MILES	5 MILES
# of Persons per HH	2.5	2.3	2.3



DAYTIME POPULATION	1 MILE	3 MILES	5 MILES
Total Employees	8,984	84,339	221,846
Total Businesses	1,127	8,308	20,247



HOUSEHOLDS	1 MILE	3 MILES	5 MILES
2023 Households	14,113	66,600	155,311
2028 Households	15,348	72,329	169,332

