

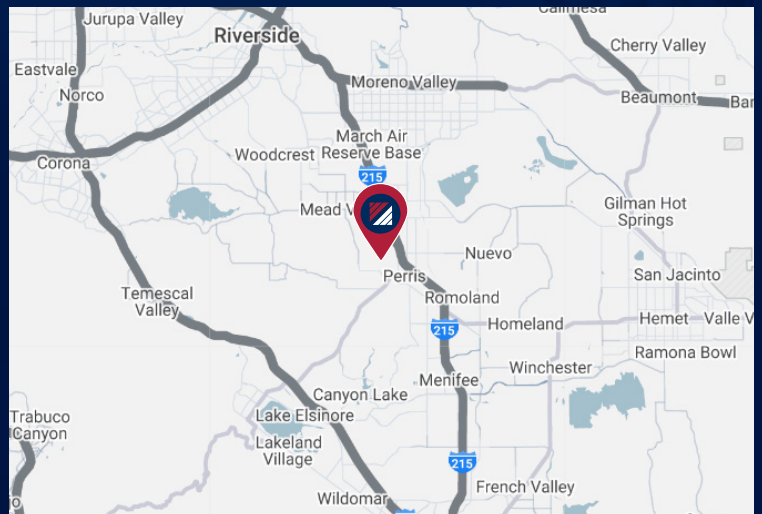


FOR LEASE ±14,807 SF

14000 MERIDIAN PARKWAY BLDG. 7
RIVERSIDE | CA, 92508

PROPERTY HIGHLIGHTS

- **AVAILABLE:** ±14,807 SF
- **OFFICE SF:** ±1,500
- **WAREHOUSE SF:** ±13,307 (est.)
- **POWER:** 400 Amps, 277/480 V (Expandable) (Verify)
- **GL/DH:** 1/2
- **CLEAR HEIGHT:** 20'
- **SITE:** Full Concrete Lot
- **PARKING:** 19 Surface Spaces
Ratio: 1.3/1,000 SF



FOR MORE INFORMATION, PLEASE CONTACT:

NOAH SAMARIN
EVP | PRINCIPAL
M: 714.812.1289
nsamarin@daumcommercial.com
CADRE #01755814

DAVID GORES
FIRST VICE PRESIDENT
M: 909.720.9437
dgores@daumcommercial.com
CADRE #01502471

NICK CANTU
ASSOCIATE V.P.
M: 714.787.9454
ncantu@daumcommercial.com
CADRE #02016719

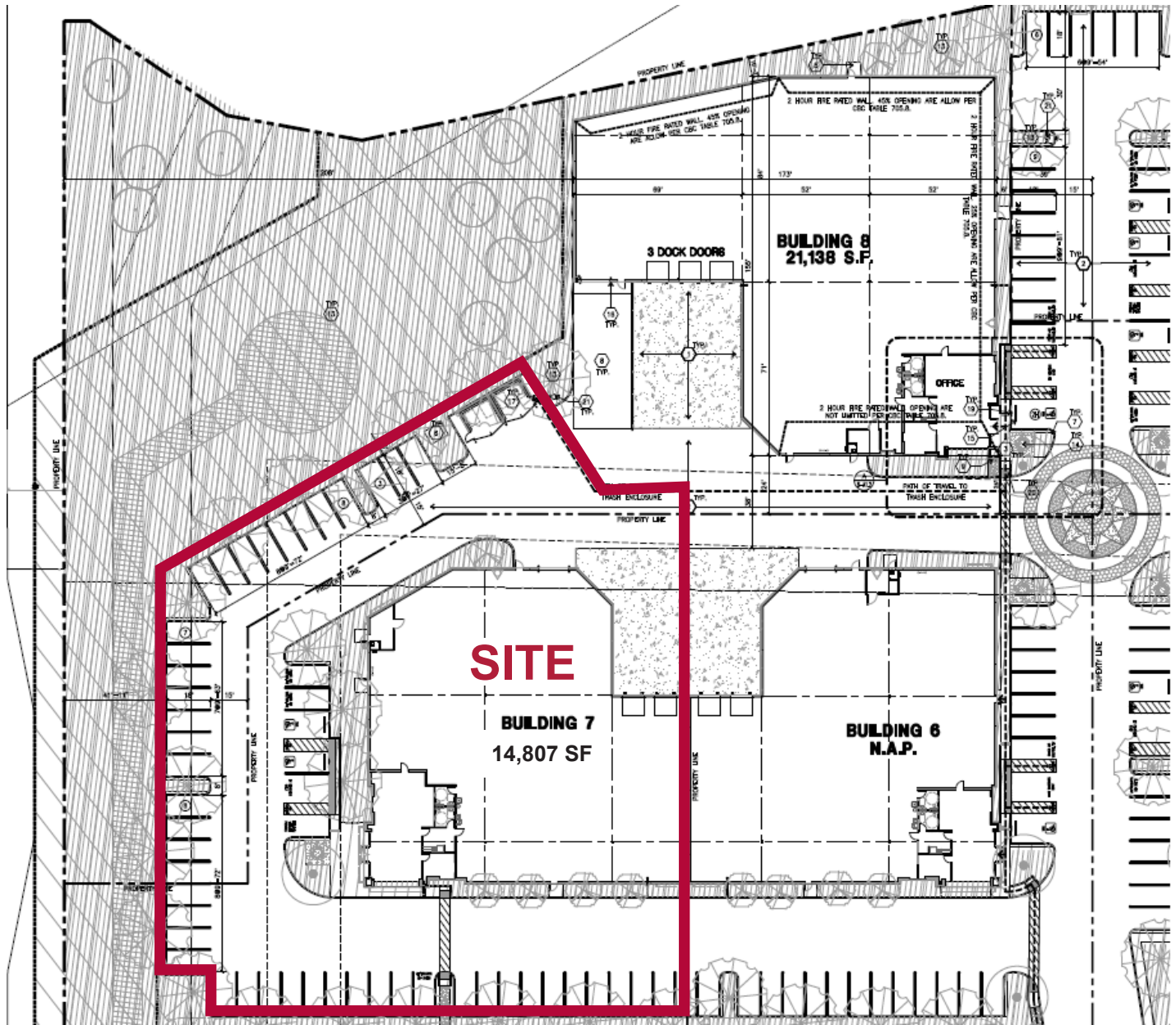


Although all information is furnished regarding for sale, rental or financing from sources deemed reliable, such information has not been verified and no express representation is made nor is any to be implied as to the accuracy thereof, and it is submitted subject to errors, omissions, changes of price, rental or other conditions, prior sale, lease or financing, or withdrawal without notice. All Maps provided courtesy of Google Maps, Bing Maps, and Google Earth. D/AQ Corp. # 01129558

FOR LEASE ±14,807 SF

14000 MERIDIAN PARKWAY BLDG. 7

RIVERSIDE | CA, 92508



- ±1.06 acre site
- Highly visible along E. Alessandro & Meridian Parkway
- 2 dock high loading & 1 ground level loading doors
- 19 surface spaces available, ratio 1.3/1,000 SF
- Occupancy Feb./March 2025

FOR MORE INFORMATION, PLEASE CONTACT:

NOAH SAMARIN
EVP | PRINCIPAL
M: 714.812.1289
nsamarin@daumcommercial.com
CADRE #01755814

DAVID GORES
FIRST VICE PRESIDENT
M: 909.720.9437
dgores@daumcommercial.com
CADRE #01502471

NICK CANTU
ASSOCIATE V.P.
M: 714.787.9454
ncantu@daumcommercial.com
CADRE #02016719



Although all information is furnished regarding for sale, rental or financing from sources deemed reliable, such information has not been verified and no express representation is made nor is any to be implied as to the accuracy thereof, and it is submitted subject to errors, omissions, changes of price, rental or other conditions, prior sale, lease or financing, or withdrawal without notice. All Maps provided courtesy of Google Maps, Bing Maps, and Google Earth. D/AQ Corp. # 01129558