



# FOR *Sublease*

**350 Church Street, Hartford**  
**24,635 SF of Office Space Available**

Located in the Central Business District of Hartford, 350 Church Street offers approximately 24,635 SF of office space available for sublease. 350 Church Street offers Class A tenant amenities including:

- Updated Lobby
- Full-Service Café
- Dry-Cleaning Pick Up and Delivery
- Best On-Site Parking Garage in the CBD
- Conference Center
- Fitness Center with Showers and Lockers
- On-Site Property Management

---

## Leasing Contact

**Chris Ostop**

+1 860 702 2835

[Christopher.Ostop@jll.com](mailto:Christopher.Ostop@jll.com)

## Premises Details

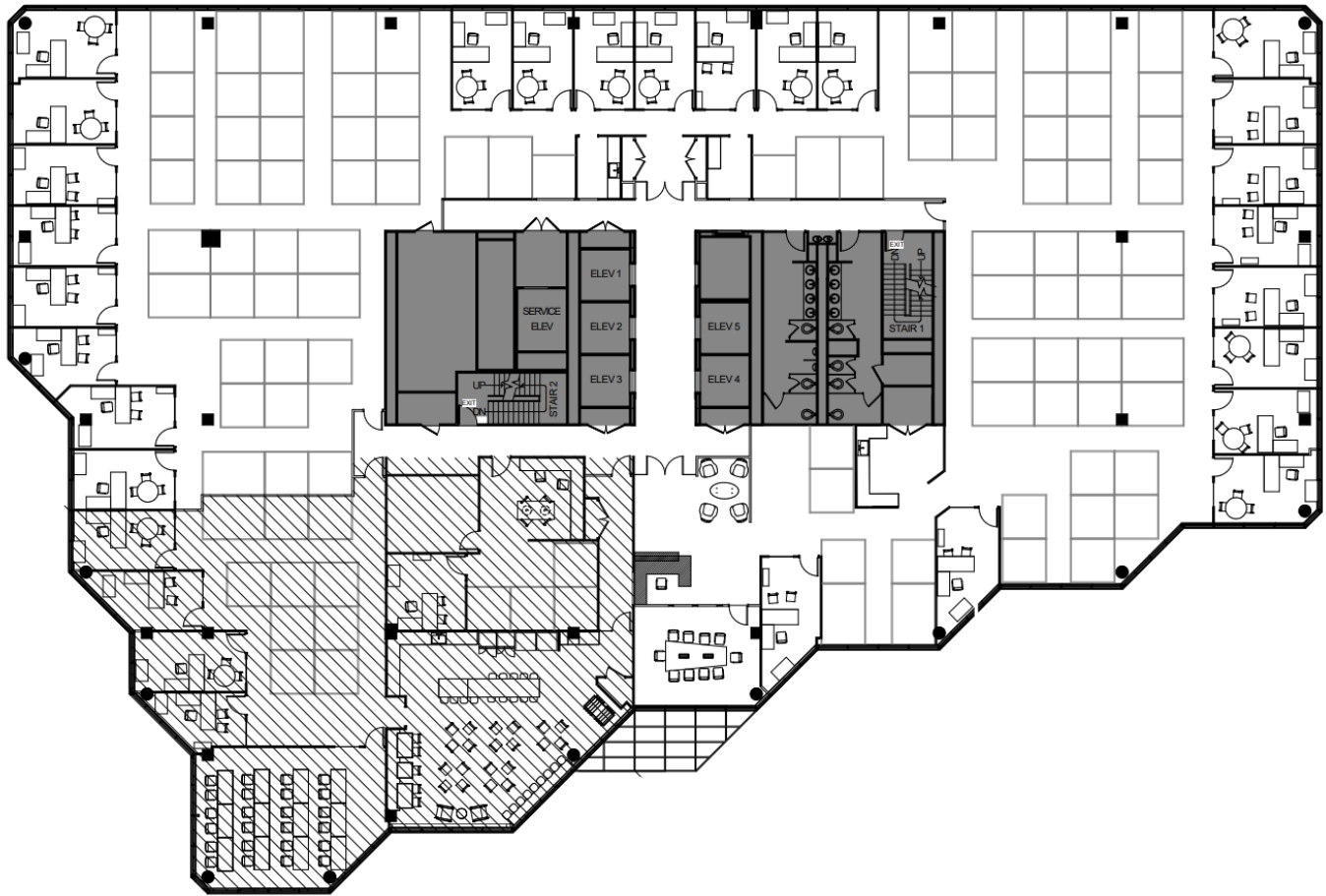
**Availability:** 24,635 SF

**Timing:** Immediately

**Term:** Through 4/30/2026

---

# 11<sup>th</sup> Floor | 24,635 SF



## Possible Subdivisions





# Amenities



Fitness Center



Dry-cleaning  
pickup &  
delivery



On-site Garage  
Parking



Full-Service  
Café



24-hour  
Security



Conference  
Center



I-84  
**Direct Access**

I-91  
**0.09 Miles**



Bradley International  
Airport  
**15 Miles**

Although information has been obtained from sources deemed reliable, neither Owner nor JLL makes any guarantees, warranties or representations, express or implied, as to the completeness or accuracy as to the information contained herein. Any projections, opinions, assumptions or estimates used are for example only. There may be differences between projected and actual results, and those differences may be material. The Property may be withdrawn without notice. Neither Owner nor JLL accepts any liability for any loss or damage suffered by any party resulting from reliance on this information. If the recipient of this information has signed a confidentiality agreement regarding this matter, this information is subject to the terms of that agreement. ©2019 Jones Lang LaSalle IP, Inc. All rights reserved.







**For more information please contact:**

**Chris Ostop**  
+1 860 702 2835  
[Christopher.Ostop@jll.com](mailto:Christopher.Ostop@jll.com)

