

(2) BEAUTIFUL OFFICE SUITES FOR LEASE

Whitewater Professional Plaza - High Visibility On Cook Street

- Beautiful Well-Maintained Center
- Central Valley Location - Minutes from Hwy 111
- Elevator & Stairs
- Plenty of Parking



43100 Cook Street, Suites 200/201 & 204, Palm Desert, CA 92211



www.baxleyproperties.com
Phone: 760-773-3310
Fax: 760-773-3013
73712 Alessandro Drive, Ste B-4,
Palm Desert, CA 92260

Suite 200/201 - 5,755 SF (\$1.40/SF + NNN)

Suite 204 - 1,912 SF (\$1.30/SF + NNN)

Matthew Longstreth

matthew@baxleyproperties.com

Off: 760-773-3310

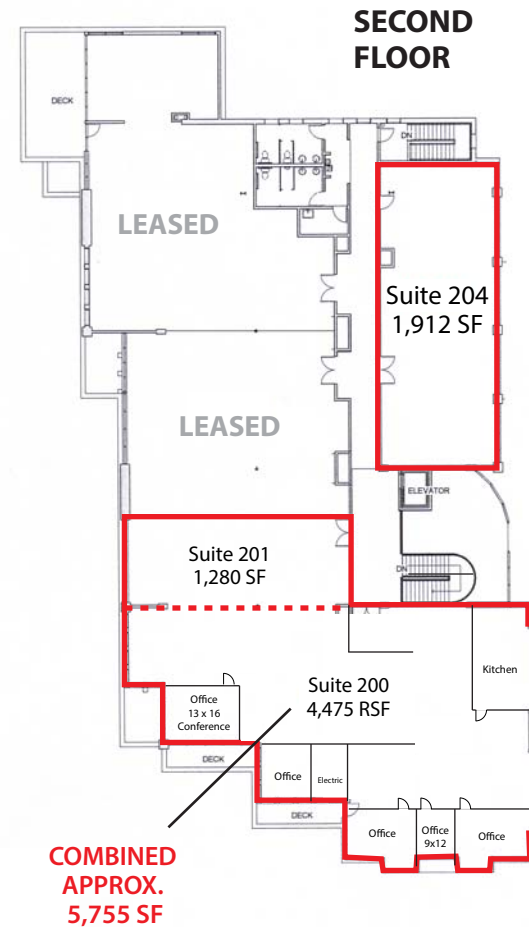
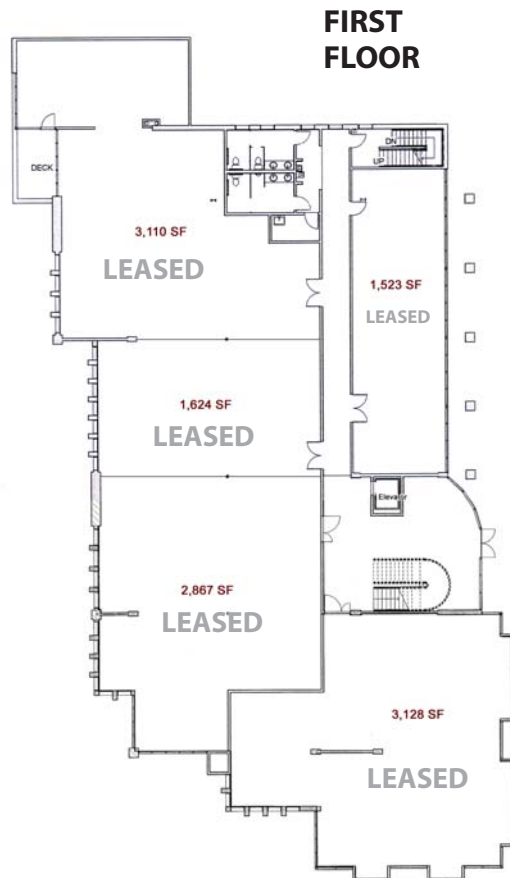
Cell: 949-293-1314

DRE# 01322594

(2) BEAUTIFUL OFFICE SUITES FOR LEASE

43100 Cook Street, Suites 200/201 & 204, Palm Desert, CA 92211

Floor Plan

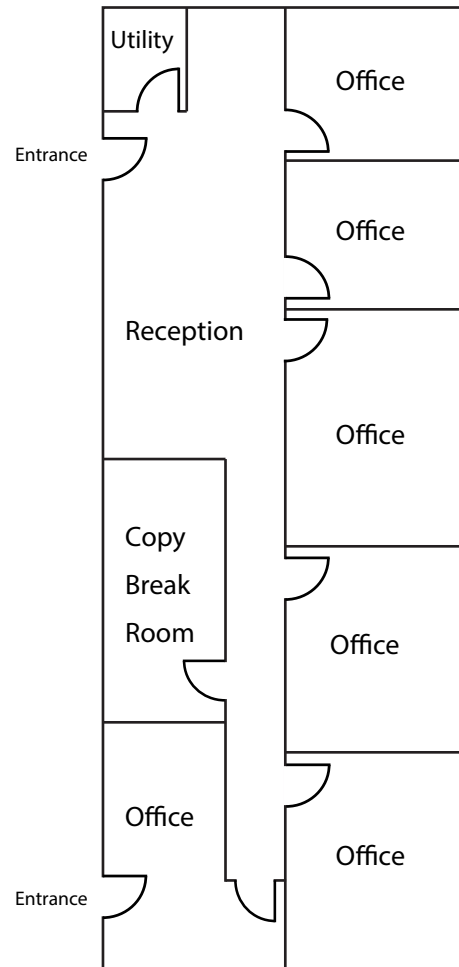


(2) BEAUTIFUL OFFICE SUITES FOR LEASE

Floor Plan - 2nd Floor

43100 Cook Street, Palm Desert, CA 92211

Suite 204



FOR LEASE

Suite 204 - 1,912 RSF

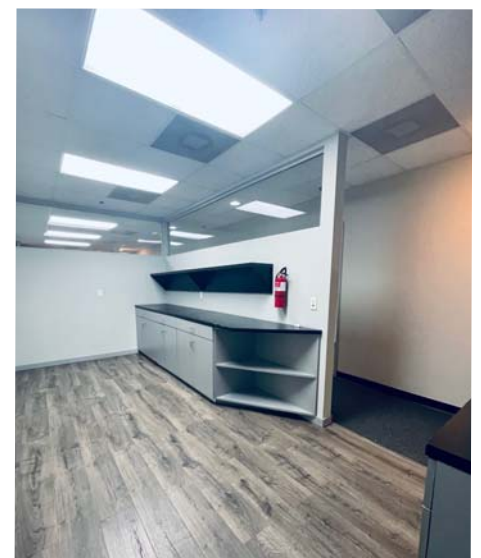
\$1.30/SF + \$.60/SF NNN

- Newly Remodeled Suite
- 1,625 SF Usable (15% load Factor)
- 6 Private Offices (1 of which has a private entrance)
- Copy/Break Room
- Reception/Waiting Room or Bull Pen
- Community Restrooms
- 2 Reserved Underground Parking Spaces
- Plenty of Above Ground Covered Parking Spaces
- 3-5 Year Lease Term

(2) BEAUTIFUL OFFICE SUITES FOR LEASE

Photos of Suite 204

43100 Cook Street, Palm Desert, CA 92211



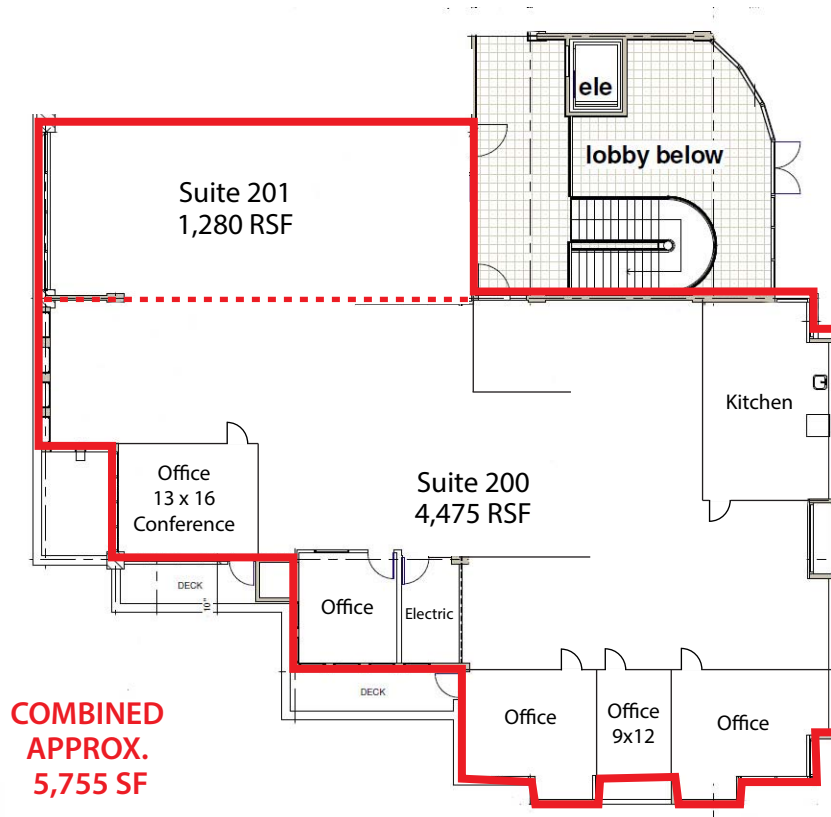
Disclaimer: Information has been secured from sources we believe to be reliable, however, Baxley Properties, Inc. cannot guarantee its accuracy.

(2) BEAUTIFUL OFFICE SUITES FOR LEASE

Floor Plan - 2nd Floor

43100 Cook Street, Palm Desert, CA 92211

Suites 200/201



FOR LEASE

Suite 200/201 - 5,755 RSF

Will Divide to 1,280 SF

\$1.40/SF + \$.60/SF NNN

- 15% Load Factor
- Large 2nd Floor Corner Office
- 4 Private Offices
- 1 Conference Room
- Large Bullpen
- Community Restrooms
- Plenty of Above Ground Covered Parking Spaces
- 200 & 201 are Currently One Suite 5,755 SF -
- Will Consider Dividing (1,280 RSF)

(2) BEAUTIFUL OFFICE SUITES FOR LEASE

Photos of Suites 200/201

43100 Cook Street, Palm Desert, CA 92211



Disclaimer: Information has been secured from sources we believe to be reliable, however, Baxley Properties, Inc. cannot guarantee its accuracy.