

PREMIERE OFFICE SPACE FOR LEASE
28 Corporate Drive Halfmoon, NY 12065



CONVENIENT LOCATION IN PARK-LIKE SETTING

PROACTIVE LANDLORD

CLEAN AND WELL MAINTAINED

LOTS OF NATURAL LIGHT

PLENTY OF FREE PARKING

BUSY TOWN IN HIGH-GROWTH AREA

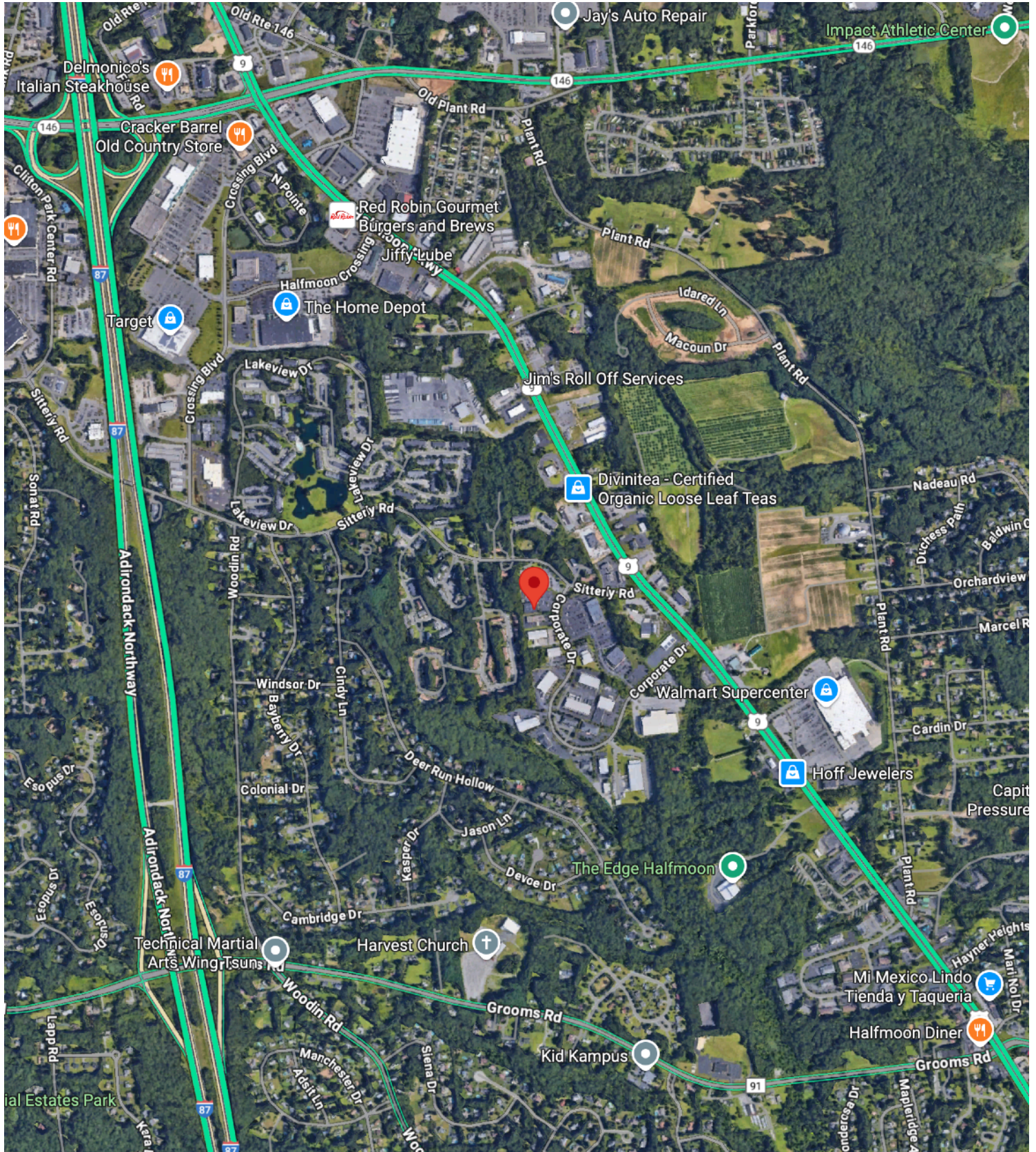
LOADS OF LOCAL AMENITIES



For More information: Steve Cronin ~ 518.469.2836 ~ steve@croninreny.com

PREMIERE OFFICE SPACE FOR LEASE

28 Corporate Drive Halfmoon, NY 12065



For More information: Steve Cronin ~ 518.469.2836 ~ steve@croninreny.com

PREMIERE OFFICE SPACE FOR LEASE
28 Corporate Drive Halfmoon, NY 12065

