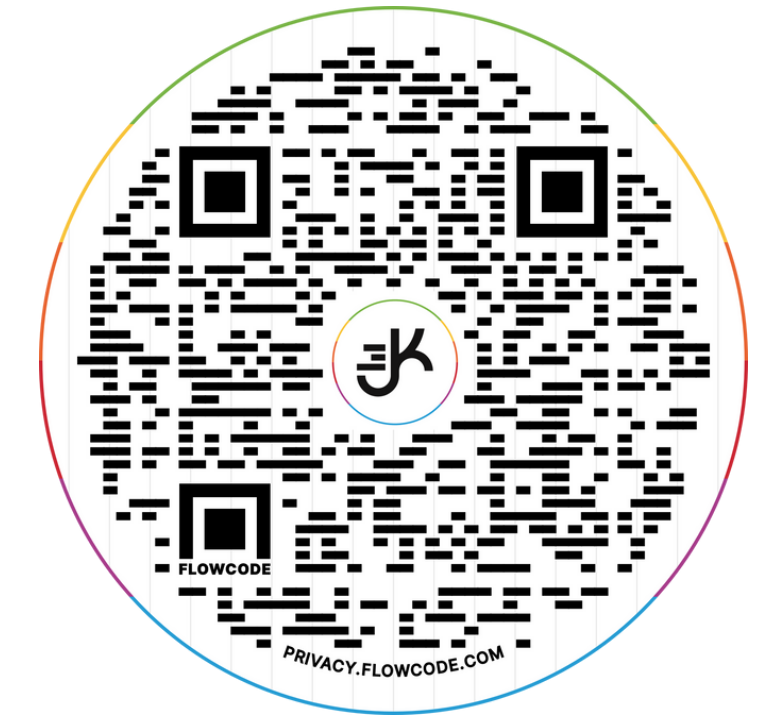




420 GATES AVENUE

COMMUNITY FACILITY FOR LEASE
BEDFORD-STUYVESANT, BROOKLYN



SCAN OR CLICK FOR 360 TOUR



WWW.J3K.COM

420 GATES AVENUE

BETWEEN MARCY & NOSTRAND AVENUE

SIZE (approx.)

Total: 6,542 SF (Community Facility)

Ground Fl: 354 SF

Lower Level: 6,188 SF

ASKING RENT

UPON REQUEST

CEILING HEIGHTS

UP TO 12'

TERM

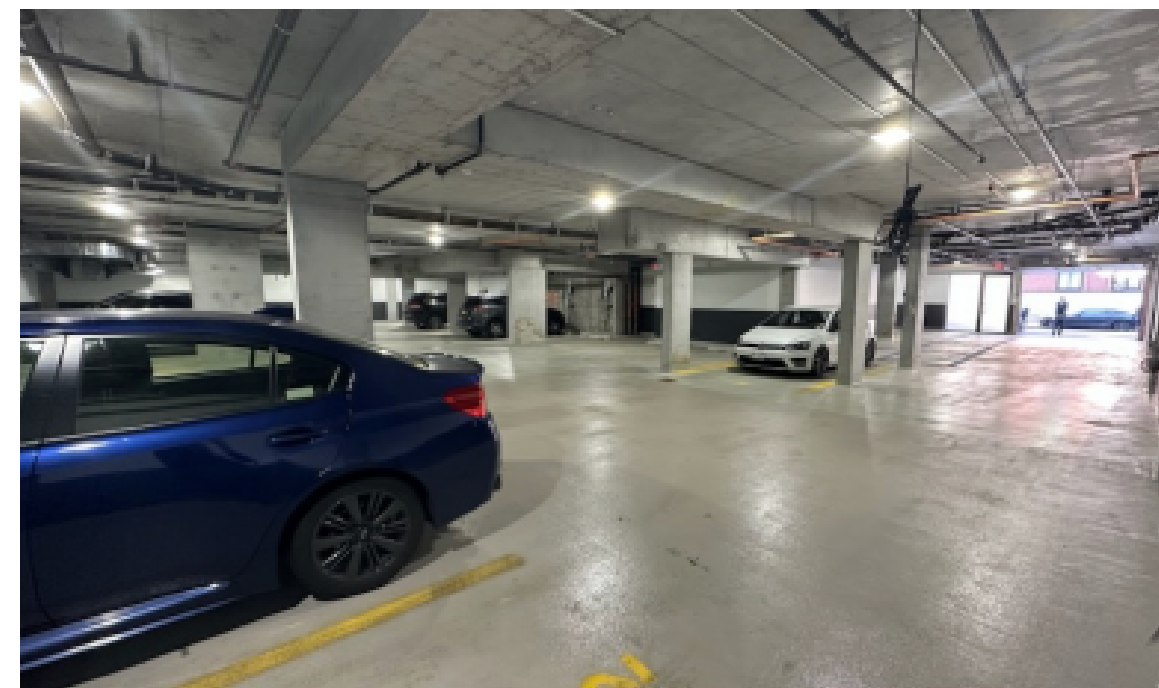
FLEXIBLE

TRANSPORTATION



HIGHLIGHTS

- Sitting at the base of new 44 unit residential development
- 22 Parking spaces
- Ideal for Nonprofits (501c) and or Medical Users
- Private Elevator
- Fully Sprinklered & ADA Compliant
- High Ceilings 12'
- 4 Private Bathrooms



For more information please contact:

JUSTIN KAMALI **MORGAN ADZEI**

516-306-2518

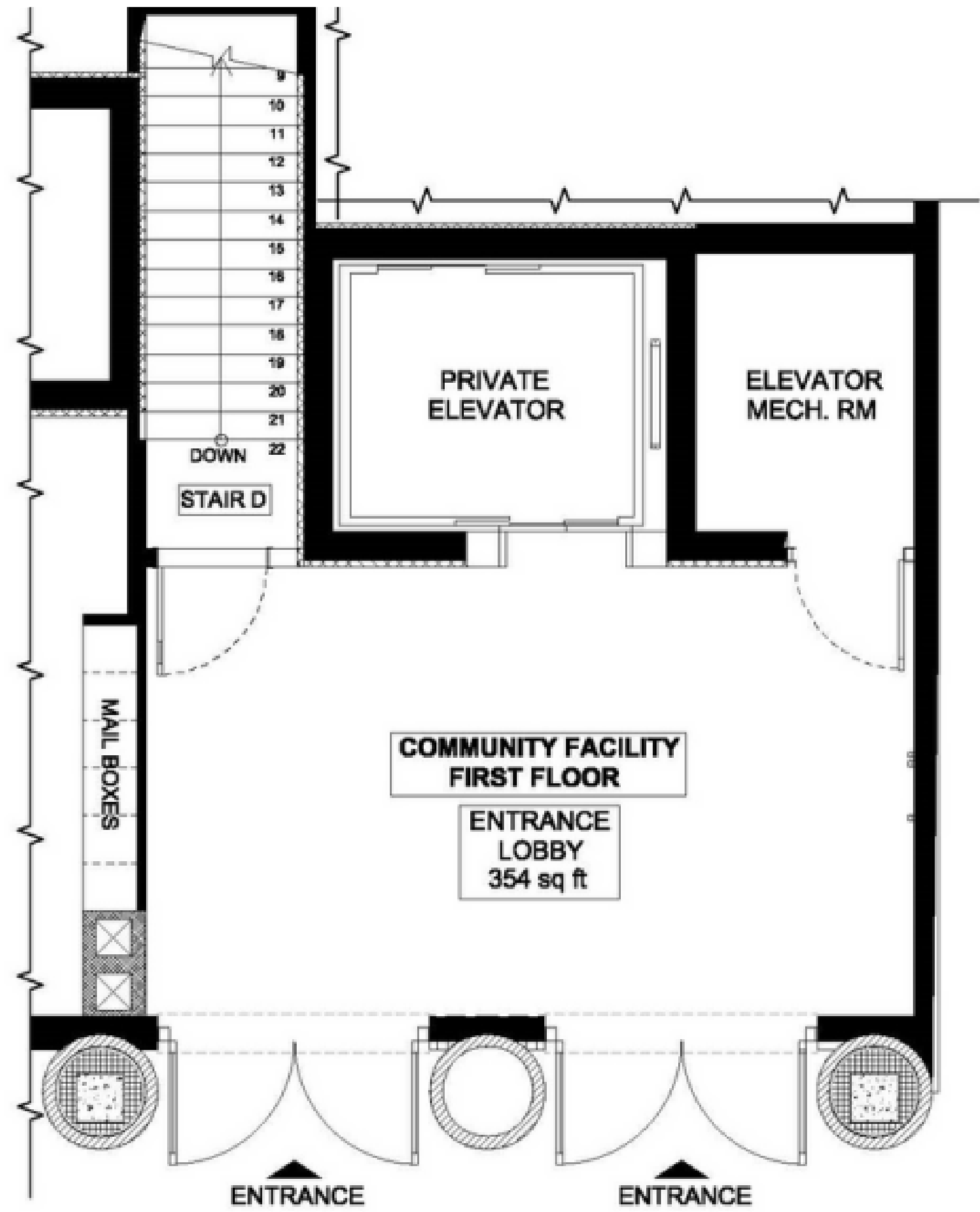
917-504-9180

justin@j3k.com

morgan@j3k.com

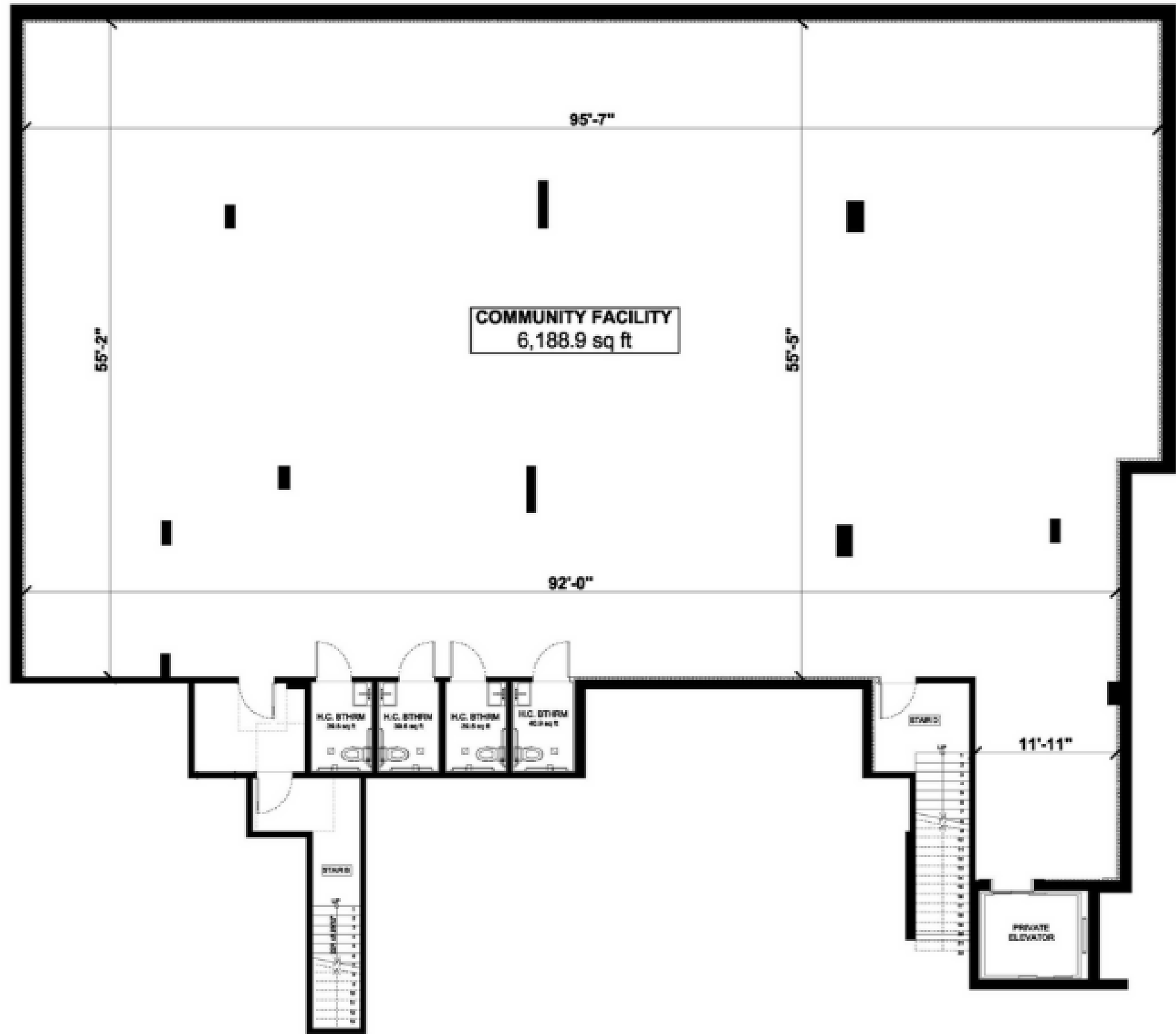


WWW.J3K.COM



First Fl: 354 SF

Lower Level: 6,188 SF



For more information please contact:

JUSTIN KAMALI **MORGAN ADZEI**

516-306-2518

917-504-9180

justin@j3k.com

morgan@j3k.com

