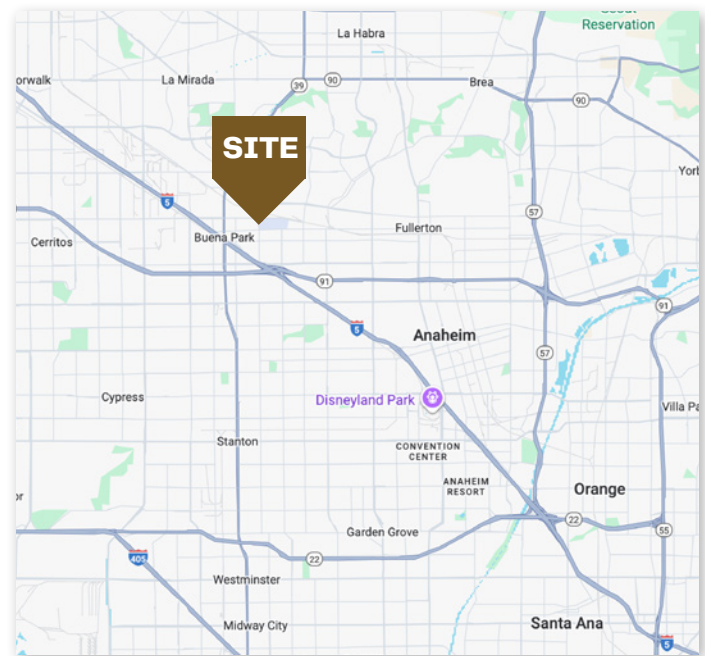




±6,000 SF INDUSTRIAL BUILDING | ASKING: \$2,150,000 (\$358 PSF)

PROPERTY HIGHLIGHTS

- ±6,000 SF Industrial Building
- 2 Units: ±3,000 SF with Office Space (*Vacant*)
- Lot: ±13,282 SF (0.30 AC)
- Two (2) Ground-Level Doors
- 15' Warehouse Clearance
- 400 AMP Power (*Buyer to Verify*)
- Private Fenced Yard
- Easy Access to CA-57 & CA-91
- Built 1957



4260 ARTESIA AVE, FULLERTON, CA 92833

FOR SALE

DONN E. YU

DRE #01977460
17875 Von Karman, Avenue, Suite 150
Irvine CA 92614

(714) 267-7777

yu@ocaprealestate.com
ocaprealestate.com



OCAP
REAL ESTATE & FINANCIAL

DISCLAIMER: The information contained herein has been obtained from the property owner or other third party and is provided to you without verification as to accuracy. We (OCAP Real Estate & Financial, its brokers, employees, agents, principals, officers, directors and affiliates) make no warranty or representation regarding the information, property, or transaction. You and your attorneys, advisors and consultants should conduct your own investigation of the property and transaction.

EXTERIOR PHOTOS



DONN E. YU

DRE #01977460
17875 Von Karman, Avenue, Suite 150
Irvine CA 92614

(714) 267-7777

yu@ocaprealestate.com
ocaprealestate.com



OCAP
REAL ESTATE & FINANCIAL

DISCLAIMER: The information contained herein has been obtained from the property owner or other third party and is provided to you without verification as to accuracy. We (OCAP Real Estate & Financial, its brokers, employees, agents, principals, officers, directors and affiliates) make no warranty or representation regarding the information, property, or transaction. You and your attorneys, advisors and consultants should conduct your own investigation of the property and transaction.

INTERIOR PHOTOS



DONN E. YU

DRE #01977460

17875 Von Karman, Avenue, Suite 150

Irvine CA 92614

(714) 267-7777

yu@ocaprealestate.com

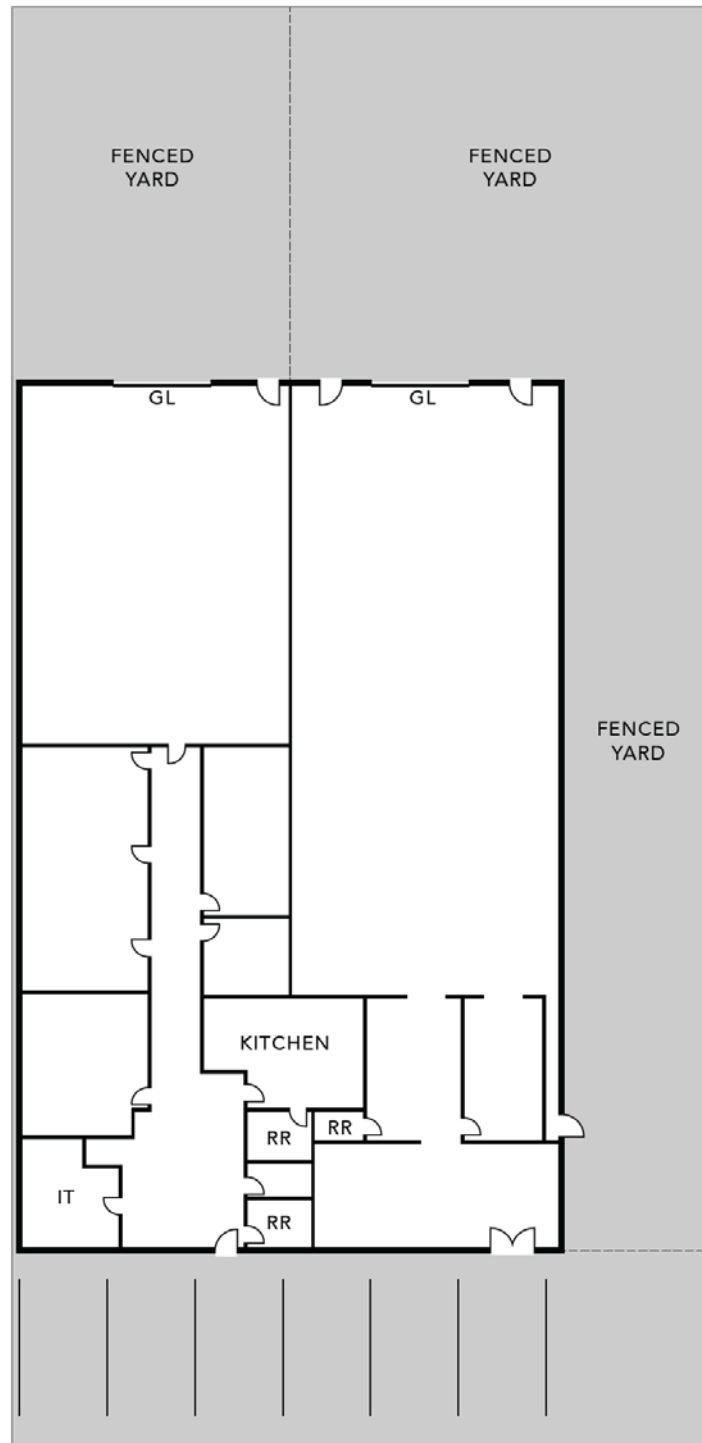
ocaprealestate.com



OCAP
REAL ESTATE & FINANCIAL

DISCLAIMER: The information contained herein has been obtained from the property owner or other third party and is provided to you without verification as to accuracy. We (OCAP Real Estate & Financial, its brokers, employees, agents, principals, officers, directors and affiliates) make no warranty or representation regarding the information, property, or transaction. You and your attorneys, advisors and consultants should conduct your own investigation of the property and transaction.

FLOOR PLAN



CONTACT:

DONN E. YU

DRE #01977460

17875 Von Karman, Avenue, Suite 150

Irvine CA 92614

(714) 267-7777

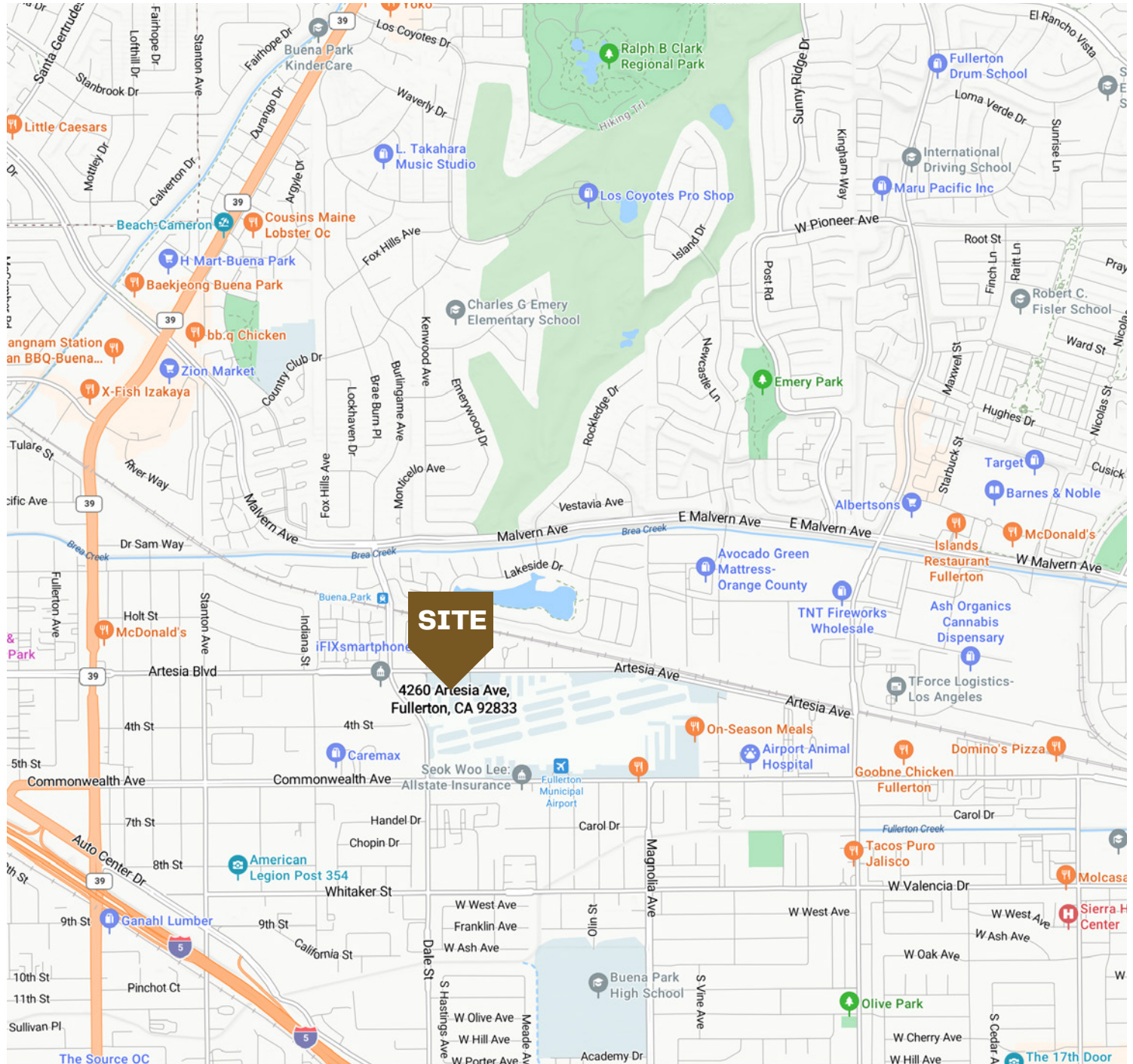
yu@ocaprealestate.com

ocaprealestate.com


OCAP
 REAL ESTATE & FINANCIAL

DISCLAIMER: The information contained herein has been obtained from the property owner or other third party and is provided to you without verification as to accuracy. We (OCAP Real Estate & Financial, its brokers, employees, agents, principals, officers, directors and affiliates) make no warranty or representation regarding the information, property, or transaction. You and your attorneys, advisors and consultants should conduct your own investigation of the property and transaction.

LOCATION MAP



CONTACT:

DONN E. YU

DRE #01977460

17875 Von Karman, Avenue, Suite 150

Irvine CA 92614

(714) 267-7777

yu@ocaprealestate.com

ocaprealestate.com


OCAP
 REAL ESTATE & FINANCIAL

DISCLAIMER: The information contained herein has been obtained from the property owner or other third party and is provided to you without verification as to accuracy. We (OCAP Real Estate & Financial, its brokers, employees, agents, principals, officers, directors and affiliates) make no warranty or representation regarding the information, property, or transaction. You and your attorneys, advisors and consultants should conduct your own investigation of the property and transaction.