

2,875 SF - 18,000 SF  
AVAILABLE

ST. LOUIS, MO

**THE CHASE  
PARK PLAZA  
ROYAL SONESTA**

212 N. KINGSHIGHWAY BLVD

*Chase Park Plaza*



**LOCATION.**  
commercial real estate

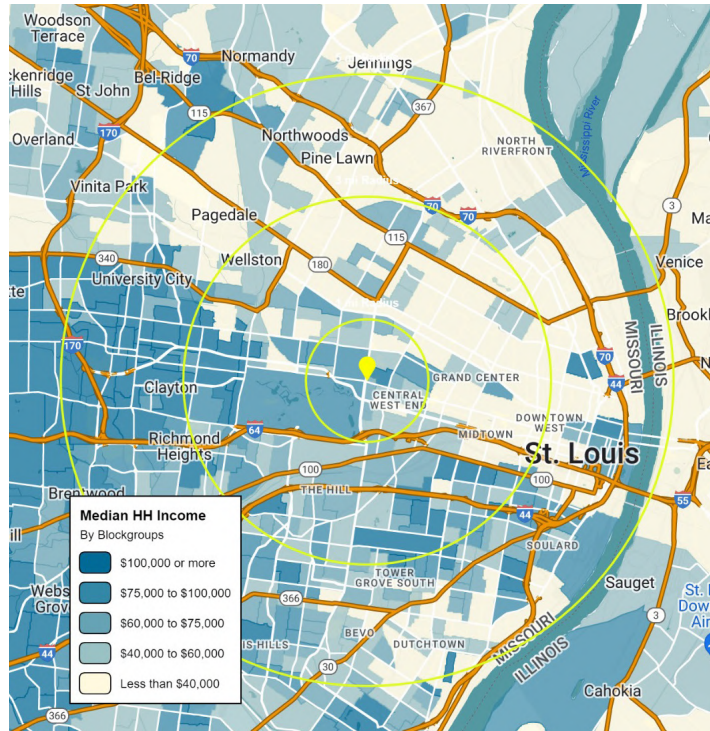


WHY  
THE  
CENTRAL  
WEST END?



ST. LOUIS' CENTRAL WEST END, A BUSTLING MIXED-USE DISTRICT LOCATED ON THE EASTERN EDGE OF THE CITY'S EVER-POPULAR FOREST PARK, IS INCREDIBLY WALKABLE AND OFFERS VISITORS A VARIETY OF AMENITIES AND ATTRACTIONS TO SUIT ANY TASTE. UPGRADE DINING OR COZY COFFEEHOUSE? ANTIQUE SHOP OR CONTEMPORARY BOUTIQUE? WORLD-CLASS ART GALLERY OR LOCAL LIVE MUSIC SHOW? YOU'LL FIND IT ALL HERE — NESTLED AMONG EYE-CATCHING PUBLIC ARTWORK AND STUNNING TURN-OF-THE-CENTURY HOMES.

# CENTRAL WEST END - NEIGHBORHOOD VIBE

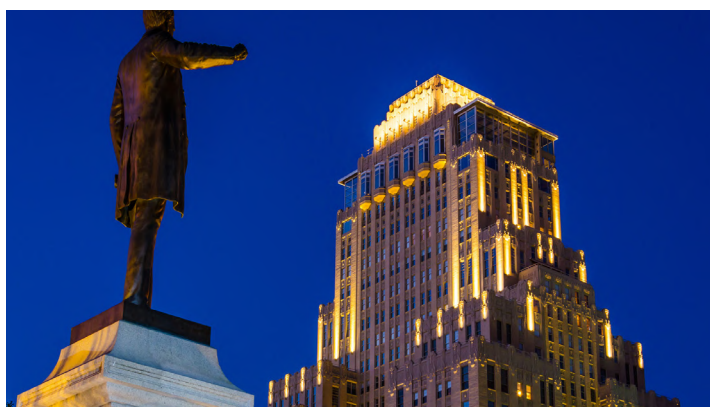


## ANNUAL DEMOGRAPHICS

| POPULATION    | 1 MI      | 3 MI      | 5 MI      |
|---------------|-----------|-----------|-----------|
|               | 19,948    | 132,390   | 349,253   |
| HOUSEHOLDS    | 1 MI      | 3 MI      | 5 MI      |
|               | 11,910    | 63,363    | 167,949   |
| AVG HH INCOME | 1 MI      | 3 MI      | 5 MI      |
|               | \$117,398 | \$101,461 | \$104,938 |

Perched on the eastern edge of Forest Park and over a century old, the chic Central West End is full of charming sidewalk cafés, galleries, antique shops, restaurants, boutiques and pubs. It's a little European, a little New York and totally St. Louis.

The CWE is the perfect place to relax and people-watch after exploring the neighborhood's popular visitor attractions. Adjacent to the commercial district, tree-lined streets with stately turn-of-the-century homes distinguish the area. Look for the family apartment of playwright Tennessee Williams, said to be the setting of his play *The Glass Menagerie*. The breathtaking Cathedral Basilica of Saint Louis, housing the world's largest collection of mosaic art, anchors this exciting neighborhood. The World Chess Hall of Fame, home of the world's largest chess piece, also has its roots set in the CWE. It regularly plays host to the top chess players in the world and major national and international competitions. Annual events include a popular house tour in the spring, the Central West End Art Fair & Taste Festival in June, a Greek Festival during Labor Day weekend and Halloween festivities in October.



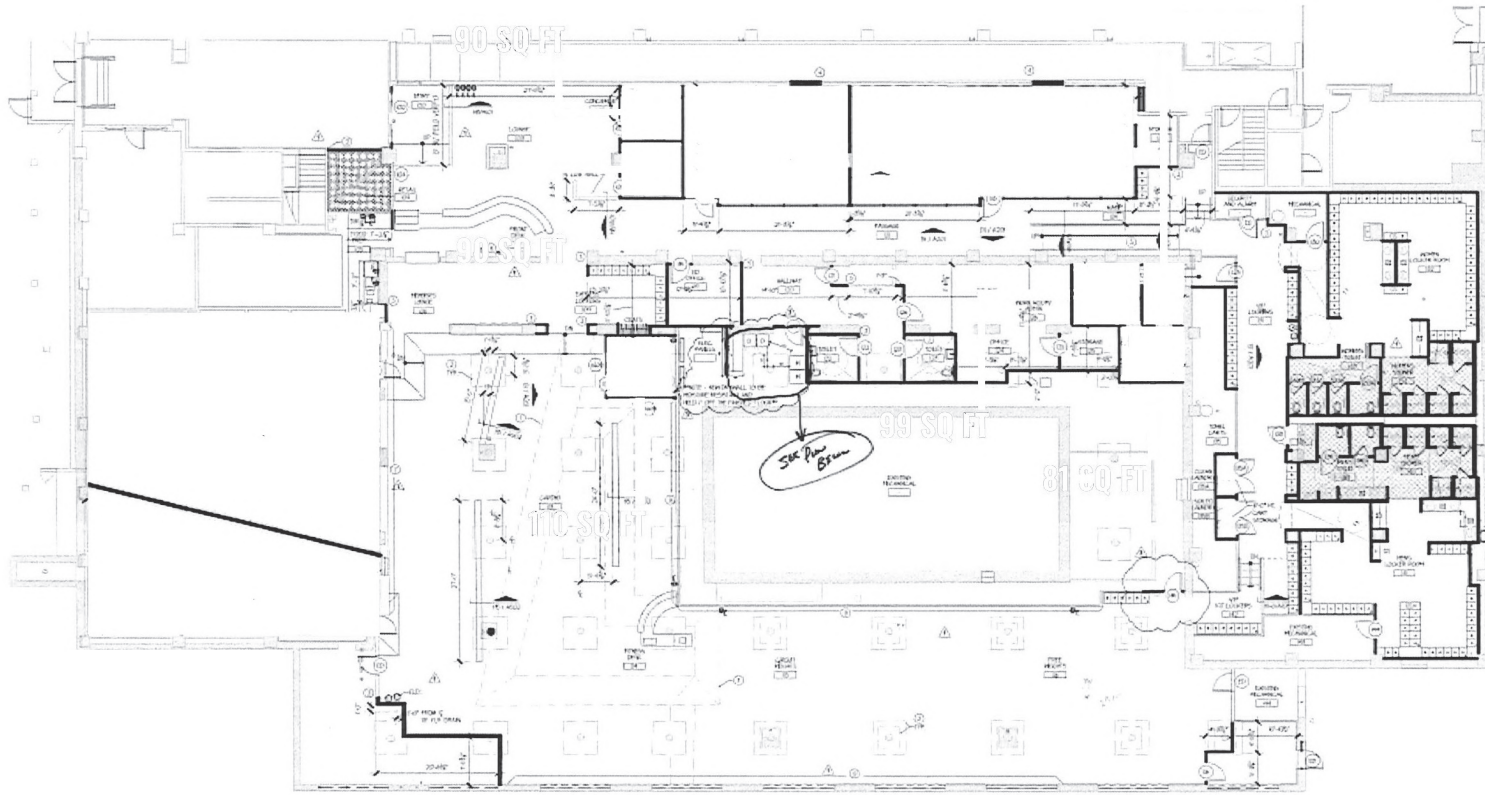
## CENTRAL WEST END RESTAURANTS & RETAILERS INCLUDE:



THE INFORMATION IN THIS FLYER HAS BEEN OBTAINED FROM SOURCES BELIEVED RELIABLE. WHILE WE DO NOT DOUBT ITS ACCURACY, WE HAVE NOT VERIFIED IT AND MAKE NO GUARANTEE ABOUT IT. IT IS YOUR RESPONSIBILITY TO INDEPENDENTLY CONFIRM ITS ACCURACY AND COMPLETENESS. ANY PROJECTIONS, OPINIONS, ASSUMPTIONS OR ESTIMATES USED ARE FOR EXAMPLE ONLY AND DO NOT REPRESENT THE CURRENT OR FUTURE PERFORMANCE OF THE PROPERTY. THE VALUE OF THIS TRANSACTION TO YOU DEPENDS ON TAX AND OTHER FACTORS WHICH SHOULD BE EVALUATED BY YOUR TAX, FINANCIAL AND LEGAL ADVISORS. YOU AND YOUR ADVISORS SHOULD CONDUCT A CAREFUL, INDEPENDENT INVESTIGATION OF THE PROPERTY TO DETERMINE TO YOUR SATISFACTION THE SUITABILITY OF THE PROPERTY FOR YOUR NEEDS.

# CHASE PARK PLAZA | ST. LOUIS, MO

## FORMER FITNESS & SPA SPACE



- 18,000 SF
- FORMER FITNESS & SPA SPACE
  
- CONTACT BROKER FOR ADDITIONAL INFORMATION & PRICING

SCOTT BITNEY

BEN WEIS

314.818.1550 (OFFICE)  
314.276.4673 (MOBILE)  
scott@LocationCRE.com

314.818.1563 (DIRECT)  
314.629.6532 (MOBILE)  
ben@LocationCRE.com

*The Chase Park Plaza*

ROYAL SONESTA HOTEL

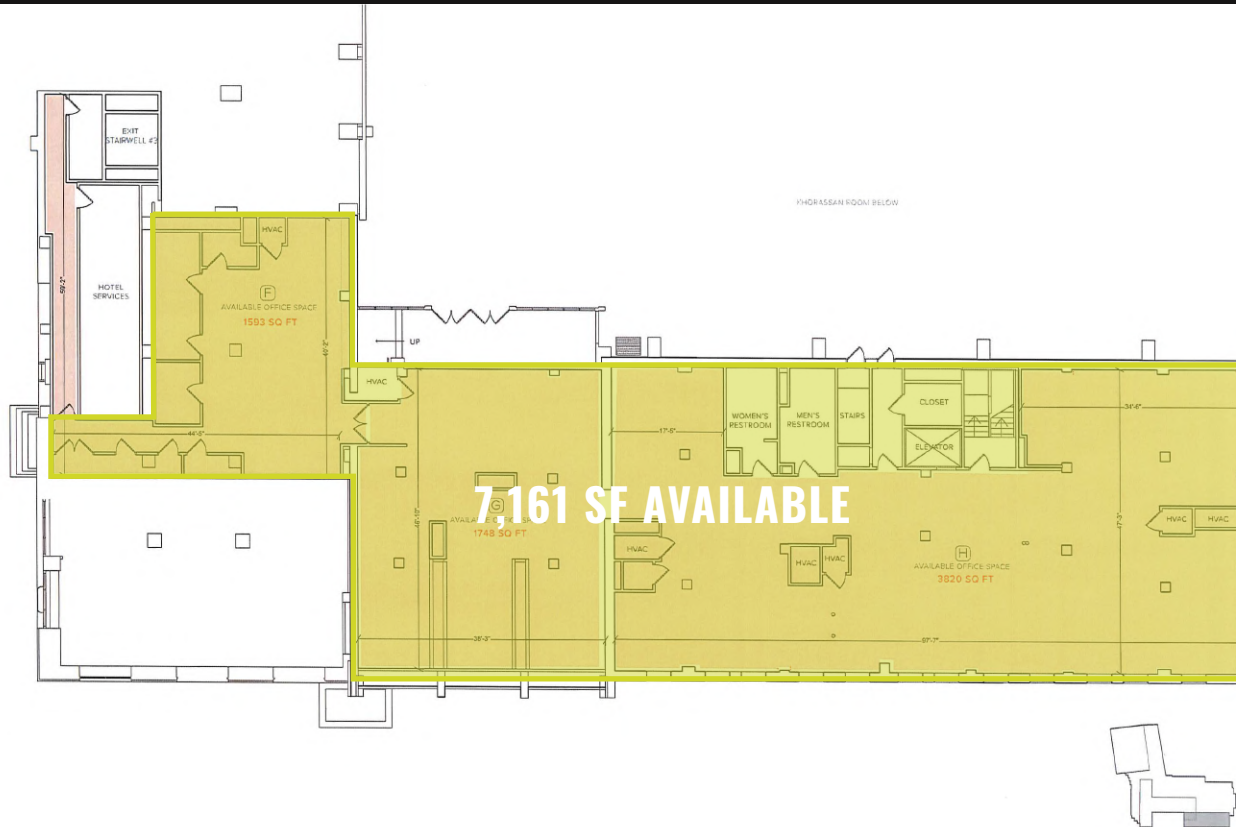


f t i in p R www.LocationCRE.com

THE INFORMATION IN THIS FLYER HAS BEEN OBTAINED FROM SOURCES BELIEVED RELIABLE. WHILE WE DO NOT DOUBT ITS ACCURACY, WE HAVE NOT VERIFIED IT AND MAKE NO GUARANTEE ABOUT IT. IT IS YOUR RESPONSIBILITY TO INDEPENDENTLY CONFIRM ITS ACCURACY AND COMPLETENESS. ANY PROJECTIONS, OPINIONS, ASSUMPTIONS OR ESTIMATES USED ARE FOR EXAMPLE ONLY AND DO NOT REPRESENT THE CURRENT OR FUTURE PERFORMANCE OF THE PROPERTY. THE VALUE OF THIS TRANSACTION TO YOU DEPENDS ON TAX AND OTHER FACTORS WHICH SHOULD BE EVALUATED BY YOUR TAX, FINANCIAL AND LEGAL ADVISORS. YOU AND YOUR ADVISORS SHOULD CONDUCT A CAREFUL, INDEPENDENT INVESTIGATION OF THE PROPERTY TO DETERMINE TO YOUR SATISFACTION THE SUITABILITY OF THE PROPERTY FOR YOUR NEEDS.

# CHASE PARK PLAZA | ST. LOUIS, MO

## OFFICE SPACE



- 7,161 SF
- LOCATED ON 2ND FLOOR ALONG LINDELL BLVD
  
- CONTACT BROKER FOR ADDITIONAL INFORMATION & PRICING

SCOTT BITNEY

BEN WEIS

314.818.1550 (OFFICE)

314.818.1563 (DIRECT)

314.276.4673 (MOBILE)

314.629.6532 (MOBILE)

scott@LocationCRE.com

ben@LocationCRE.com

*The Chase Park Plaza*

ROYAL SONESTA HOTEL



THE INFORMATION IN THIS FLYER HAS BEEN OBTAINED FROM SOURCES BELIEVED RELIABLE. WHILE WE DO NOT DOUBT ITS ACCURACY, WE HAVE NOT VERIFIED IT AND MAKE NO GUARANTEE ABOUT IT. IT IS YOUR RESPONSIBILITY TO INDEPENDENTLY CONFIRM ITS ACCURACY AND COMPLETENESS. ANY PROJECTIONS, OPINIONS, ASSUMPTIONS OR ESTIMATES USED ARE FOR EXAMPLE ONLY AND DO NOT REPRESENT THE CURRENT OR FUTURE PERFORMANCE OF THE PROPERTY. THE VALUE OF THIS TRANSACTION TO YOU DEPENDS ON TAX AND OTHER FACTORS WHICH SHOULD BE EVALUATED BY YOUR TAX, FINANCIAL AND LEGAL ADVISORS. YOU AND YOUR ADVISORS SHOULD CONDUCT A CAREFUL, INDEPENDENT INVESTIGATION OF THE PROPERTY TO DETERMINE TO YOUR SATISFACTION THE SUITABILITY OF THE PROPERTY FOR YOUR NEEDS.

# CHASE PARK PLAZA | ST. LOUIS, MO

## OFFICE SPACE



- 2,875 SF
- CURRENTLY IN RAW CONDITION
- LOCATED ON 2ND FLOOR ALONG MARYLAND PLAZA
- CONTACT BROKER FOR ADDITIONAL INFORMATION & PRICING

SCOTT BITNEY

BEN WEIS

314.818.1550 (OFFICE)  
314.276.4673 (MOBILE)  
scott@LocationCRE.com

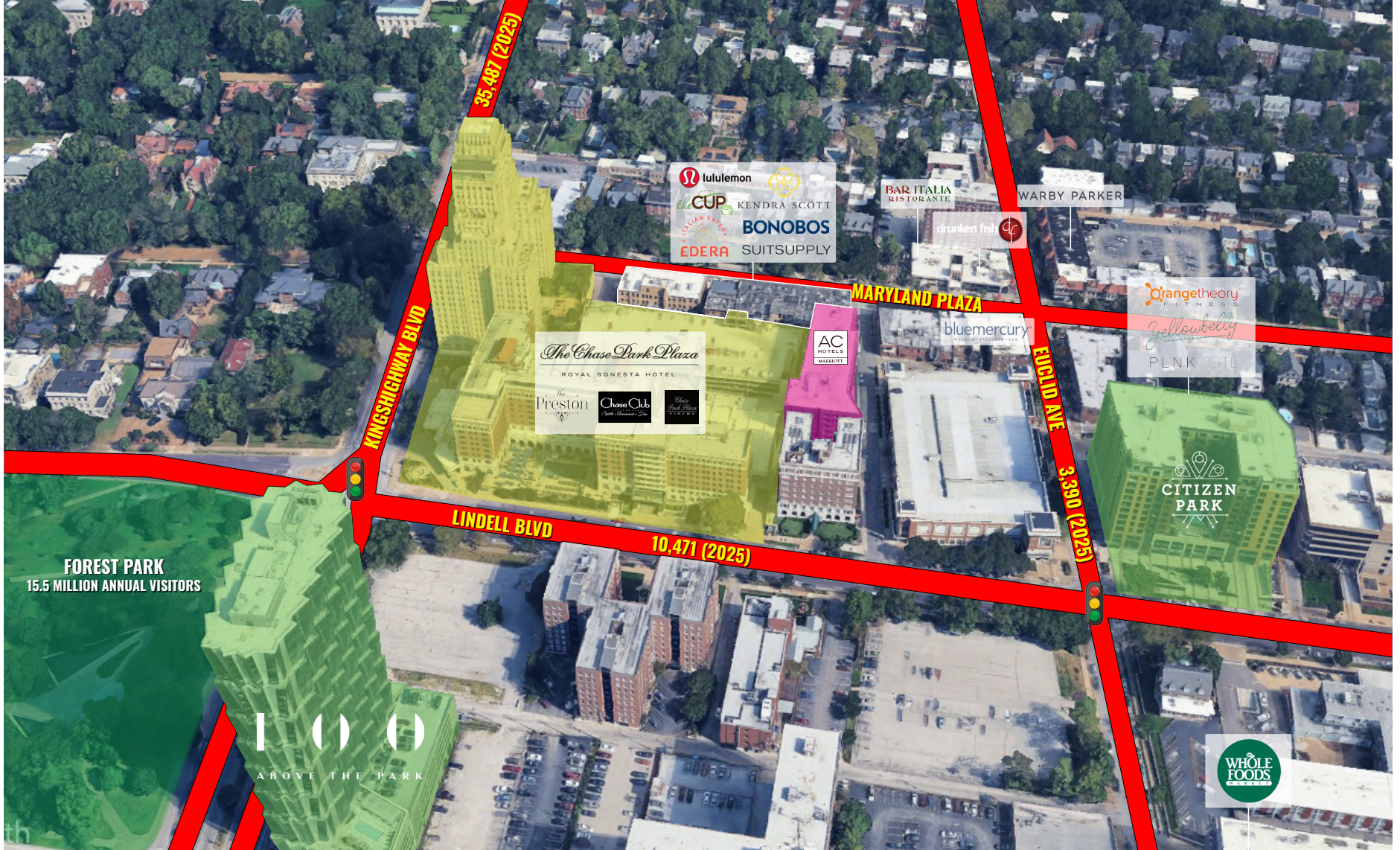
314.818.1563 (DIRECT)  
314.629.6532 (MOBILE)  
ben@LocationCRE.com

*The Chase Park Plaza*

ROYAL SONESTA HOTEL



THE INFORMATION IN THIS FLYER HAS BEEN OBTAINED FROM SOURCES BELIEVED RELIABLE. WHILE WE DO NOT DOUBT ITS ACCURACY, WE HAVE NOT VERIFIED IT AND MAKE NO GUARANTEE ABOUT IT. IT IS YOUR RESPONSIBILITY TO INDEPENDENTLY CONFIRM ITS ACCURACY AND COMPLETENESS. ANY PROJECTIONS, OPINIONS, ASSUMPTIONS OR ESTIMATES USED ARE FOR EXAMPLE ONLY AND DO NOT REPRESENT THE CURRENT OR FUTURE PERFORMANCE OF THE PROPERTY. THE VALUE OF THIS TRANSACTION TO YOU DEPENDS ON TAX AND OTHER FACTORS WHICH SHOULD BE EVALUATED BY YOUR TAX, FINANCIAL AND LEGAL ADVISORS. YOU AND YOUR ADVISORS SHOULD CONDUCT A CAREFUL, INDEPENDENT INVESTIGATION OF THE PROPERTY TO DETERMINE TO YOUR SATISFACTION THE SUITABILITY OF THE PROPERTY FOR YOUR NEEDS.



SCOTT BITNEY

BEN WEIS

314.818.1550 (OFFICE)  
314.276.4673 (MOBILE)

314.818.1563 (DIRECT)  
314.629.6532 (MOBILE)

scott@LocationCRE.com

ben@LocationCRE.com

*The Chase Park Plaza*

ROYAL SONESTA HOTEL



www.LocationCRE.com

THE INFORMATION IN THIS FLYER HAS BEEN OBTAINED FROM SOURCES BELIEVED RELIABLE. WHILE WE DO NOT DOUBT ITS ACCURACY, WE HAVE NOT VERIFIED IT AND MAKE NO GUARANTEE ABOUT IT. IT IS YOUR RESPONSIBILITY TO INDEPENDENTLY CONFIRM ITS ACCURACY AND COMPLETENESS. ANY PROJECTIONS, OPINIONS, ASSUMPTIONS OR ESTIMATES USED ARE FOR EXAMPLE ONLY AND DO NOT REPRESENT THE CURRENT OR FUTURE PERFORMANCE OF THE PROPERTY. THE VALUE OF THIS TRANSACTION TO YOU DEPENDS ON TAX AND OTHER FACTORS WHICH SHOULD BE EVALUATED BY YOUR TAX, FINANCIAL AND LEGAL ADVISORS. YOU AND YOUR ADVISORS SHOULD CONDUCT A CAREFUL, INDEPENDENT INVESTIGATION OF THE PROPERTY TO DETERMINE TO YOUR SATISFACTION THE SUITABILITY OF THE PROPERTY FOR YOUR NEEDS.