



Development Authority of
Peach County Georgia
425 James E. Khoury Drive , Unit B
Fort Valley, Georgia 31030
(478) 825-3826
peachcountydevelopment@ymail.com



A GREAT OPPORTUNITY AT THE RIGHT LOCATION

SITE FEATURES

CONCEPTUAL PLANS & REGIONAL MAPS

INFRASTRUCTURE

LOCAL GOVERNMENTAL SERVICES

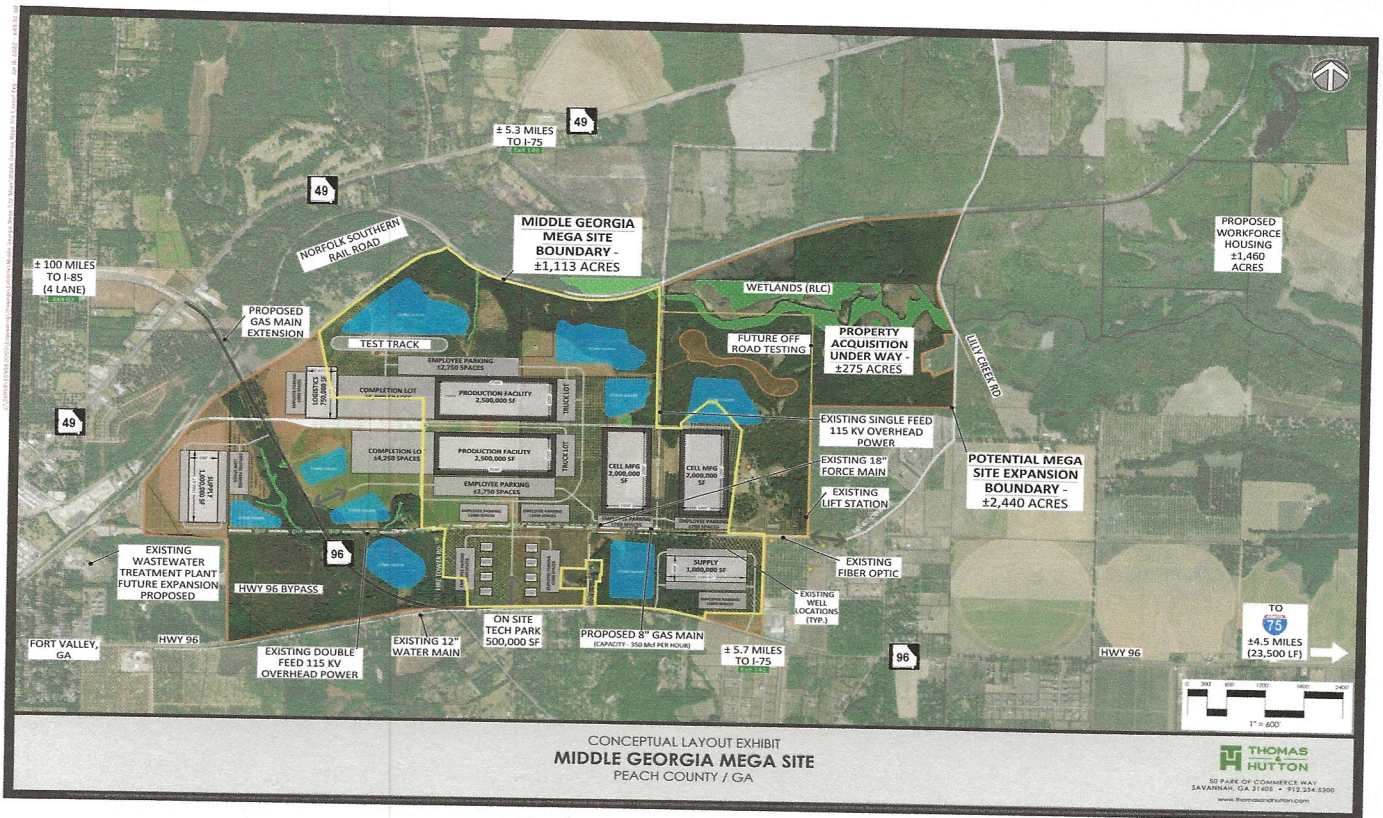
EDUCATION

BEST LIFE WORK FORCE

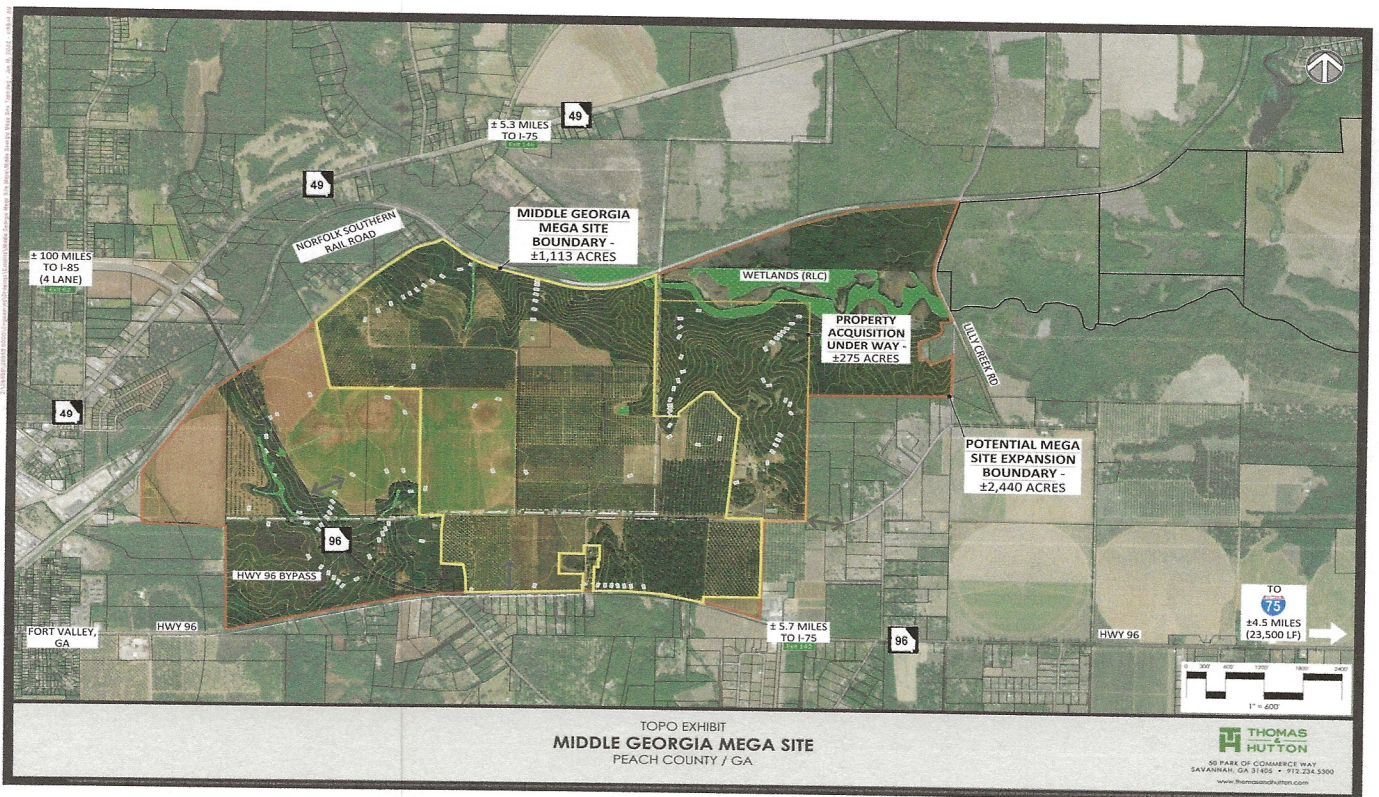
QUALITY OF LIFE IN MIDDLE GEORGIA

ADVENTUROUS THINKERS

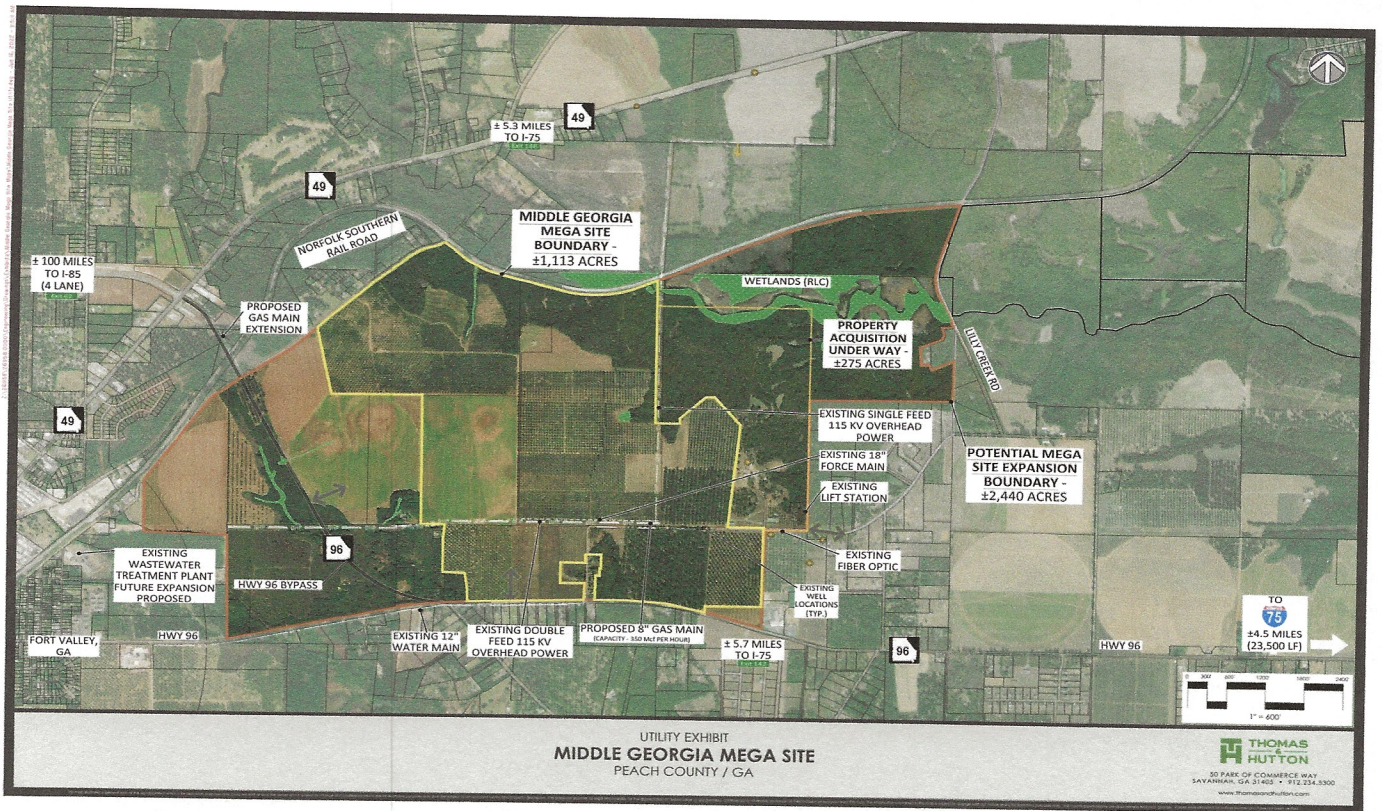
Middle Georgia MegaSite Video



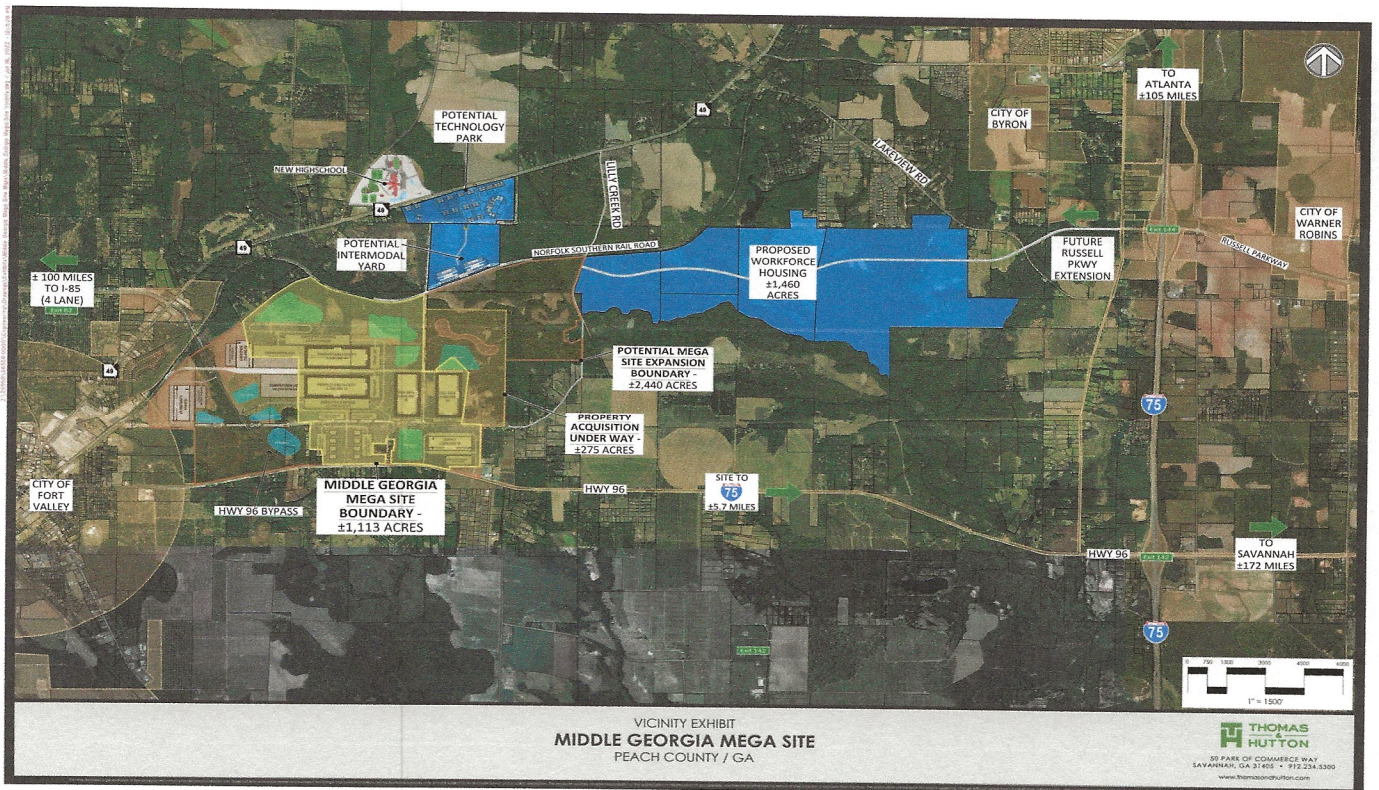
MegaSite - Topo Exhibit



MegaSite - Utilities Exhibit



MegaSite - Vicinity Exhibit



Infrastructure



Electricity

- The Middle Georgia Megasite offers customer choice pricing (competitive rate structures) from three separate electric providers. Georgia Power, Flint Energies, and the Fort Valley Utility Commission have studied the existing infrastructure and are capable of serving loads in excess of 200 mega watts. Existing 115 kv lines onsite and 230 kv lines within four miles of the site provide exceptional speed to market and flexibility in capacity building.

Natural Gas

- Natural gas is provided by the Fort Valley Utility Commission ([Municipal Gas Authority of Georgia](#))

Water

Water shall be served by [The Fort Valley Utility Commission](#). The site is currently served by a 12" water main at 70 psi and has the capacity to provide over 2 MGD. Middle Georgia has access to the Cretaceous Aquifer System, a highly productive water source that currently provides over 160 MGD for public supply. The site may provide additional wells with access to 6 MGD of additional water supply within 24 months.

Waste Water

The [Fort Valley Utility Commission's](#) waste water treatment plant located just off site has the capacity to receive 1 MGD of waste water. Preliminary design work is in progress for a waste water treatment facility expansion that may provide up to 6 MGD per day of additional capacity. The project is estimated at 36-months to install.

Transportation Rail

The site is framed by two miles of [Norfolk Southern](#) Class I rail on the north and a half mile of rail line on the west creating multiple access and design possibilities for loading cars. [Cordele Intermodal Services, Inc.](#), is located 46 miles south of the site along Interstate 75.

- [Norfolk Southern](#) Class I rail contiguous to site
- Switch Station and multiple tracks contiguous to site
- [Google Earth link to Switching Station](#)

Highway Transportation

The Middle Georgia Mega Site is located five miles west of Interstate 75, with 2.5 miles of frontage along GA Hwy 96. The site is accessible by five exits along Interstate 75 that are all less than 12 miles from the site. Upon completion, the site is capable of providing four-lane Hwy access around the perimeter of the 2,400 acre site.

- 2.5 miles of frontage on GA Hwy 96 (to provide four lane access from Interstate 16 to Interstate 75)
- 0.5 miles to GA Hwy 49 (Fall Line Freeway)
- 4.9 miles to Interstate 75 via Hwy 96 East (exit 142)
- 5.9 miles to Interstate 75 via Hwy 49 North / Hwy 247 Conn. (exit 146)
- 7.5 miles to Interstate 75 via Hwy 49 North (exit 149)
- 34.3 miles to Interstate 16 via Hwy 96 (east) (41 minutes)
- 71.2 miles to Interstate 85 via Hwy 96 (west) (1 hour, 16 minutes)
- Multiple site access points for facilitation of employee and transport traffic

Sea Transportation

The [Port of Savannah](#) and [Brunswick](#) can easily be reached in less than 5 hours by rail as they are only 171 and 188 miles to the east respectively.

- 171 miles (2 hours 26 minutes) to [The Port of Savannah](#)
- 188 miles (3 hours and 28 minutes) to [The Port of Brunswick](#)
- 361 miles (5 hours) to [The Port of Tampa](#)
- 330 miles (5 hours) to [The Port of Mobile](#)

Air Transportation

[Hartsfield-Jackson Atlanta International Airport](#) is only 76 miles from downtown Macon. Interstate travel from the Middle Georgia Mega Site to the terminal is only an hour and a half away.

- 98 miles (1 hour 26 minutes) [Hartsfield-Jackson Atlanta International Airport](#)
 - 76 miles (1 hour 12 minutes) from Downtown Macon to ATL
 - Hourly shuttle service from site to ATL via Groom Transportation; I-75, Exit #146 at Russell Parkway (8.4 miles)
 - [Groom Website and Schedule](#)
- 20 miles (23 minutes) [Middle Georgia Regional Airport](#)
 - 24 departures/arrivals per week to Baltimore/Washington International Thurgood Marshall Airport (BWI). General aviation as well.
 - Potential to add daily flights to (ATL)
- 7 miles (10 minutes) [Perry-Houston County Airport](#)
 - 5,000 foot runway with plans to extend to 6,000 feet
 - The airport's present terminal building has ample facilities for pilots, meetings and flight planning, with access to the pilot's lounge and flight planning available 24 hours per day. Presently the facility, with its 5,000' runway, is the base for 89 aircraft, with 66 public and corporate hangars.
 - A repair/maintenance facility and one flight school are housed at KPXE, with both aviation and jet fuel available 10 hours daily, and self-serve AvGas available 24/7.

Local Governmental Services

Fire Protection and Emergency Management Services

Peach County provides a level 4 ISO rating and is EMS Advanced Life Support rated. With over 20 fire stations (closest is 2 miles from site), Central Georgia is well equipped to provide exemplary protection and safety. Although we have the assets in place to serve, your safety is our number one priority in local governance and we look forward to working with you to provide onsite services for Fire and EMS.

- Fire protection services are provided by The Peach County Fire Department (Primary), and The City of Fort Valley Fire Department (Secondary). Additional assistance may be provided by The City of Warner Robins and The City of Perry Fire Departments.
 - [Peach County Fire Department Website](#)
 - Over 20 Fire Stations within 10 mile radius
 - 13 tanker / service trucks; seven engines; 3 aerials (55' Ladder, one 85" Snorkle and one 75' Ladder); 2 air and light support trucks, 4 brush/quick response trucks, a haz-mat initial response trailer, a search and rescue boat and a mobile command center
 - Peach County Fire Department – ISO Fire Rating is Class 4 county-wide; EMS is AdvancedLife Support (ALS) rated
 - Fire suppression; rescue; extrication; hazmat; urban search and rescue; medical first response (EMR); confined space rescue
- Safety provided by Peach County Sheriff Department and City of Fort Valley Police Department
 - [Peach County Sheriffs Department](#)
 - Sheriff Deese has been recognized by his peers by being elected president of the Georgia Sheriff's Association (2017-2018) and was chosen as Georgia Sheriffs' Association Sheriff of the Year in 2017.

Central Georgia is a well-known leader in Health Care Services. With eleven hospitals in a forty five minute drive time led by Navicent Health (1,000 beds), Coliseum Health Systems (310 beds), and Houston Health Center (282 beds), Central Georgia provides award winning service to the State of Georgia. The Medical Center of Peach County is the closest facility to the site (9 miles) with the ability to serve any emergency needs. This facility provides 25 beds, 14 emergency rooms, 2 trauma centers, and a helipad for emergency transport.

- 9 miles (12 minutes) to [Medical Center of Peach County - Navicent Health](#)
 - 14 emergency rooms / 2 trauma rooms
- 16 miles (23 minutes) to [Houston Medical Center](#)
 - Serving over 300,000 patients per year with 282 beds available
- 27 miles (28 minutes) to [Medical Center of Central Georgia \(Navicent Health Centers\)](#)
 - Navicent Health has more than 1,000 beds for medical, surgical, rehabilitation and hospice purposes, offers over 53 specialties in more than 50 facilities throughout the region and hosts over 100 medical residents and fellows.
 - This is one of Georgia's four nationally verified Level I Trauma Centers* where patients receive the most comprehensive and all-inclusive care for their injuries. Georgia's four Level I trauma centers are Grady Memorial Hospital (Atlanta); Medical Center of Central Georgia (Macon); Medical College of Georgia Hospitals and Clinics (Augusta); and, Memorial Health University Medical Center (Savannah).
 - A Level I Trauma Center* is the highest level of trauma center designation and offers the most comprehensive trauma care, from prevention through rehabilitation. Level I facilities also have the major responsibility of leading in trauma education, research and planning. American College of Surgeons Verified Trauma Center.
- 31 miles (30 minutes) [Coliseum Medical Center](#)
 - Coliseum Medical Center is a 310 bed facility offering a 24-hour emergency room, inpatient and outpatient surgery options, rehabilitation programs, behavioral health and diagnostic services.
- 11 Hospitals located within a 45 minute drive time from Middle Georgia Mega Site
 - [American Hospital Directory](#)
 - [Houston Healthcare / Perry Hospital](#) (17 minutes)

- [Beverly Knight Olson Children's Hospital](#) (28 minutes)
- [Flint River Hospital](#) (33 minutes)
- [Coliseum Northside Hospital](#) (34 minutes)
- [Crisp Regional Hospital](#) - Level III Trauma Center* (43 minutes)
- [Monroe County Hospital](#) (44 minutes)
- [Bleckley Memorial Hospital](#) (44 minutes)

*A Level III Trauma Facility provides trauma assessment, resuscitation, emergency surgery, stabilization and if needed, transfer of patients requiring more definitive care to Level I or II centers. Well-trained emergency department physicians and general surgeons are required.

Urgent Care Facilities within 20 minutes of MegaSite

- [Applecare Urgent Care Perry](#)
- [Applecare Urgent Care Warner Robins](#)
- [Lake Joy Med-Stop](#) (Division of Houston Healthcare)
- [Pavilion Med-Stop](#) (Division of Houston Healthcare)
- [AlphaMed Urgent Care and Med Stop](#) (Warner Robins)
- [CareConnect Convenient Care, Perry](#) (Perry)
- [Accordia Urgent Care & Family Practice](#) (Warner Robins)

Specialty Practices / Healthcare Facilities within 20 miles of MegaSite

- [Central Georgia Cancer Care](#)
- [Central Georgia Heart Center](#)
- [Eye Center of Central Georgia](#)
- [Cornerstone Medical Center & Pediatric Associates of Central Georgia](#)
- [ENT Center of Central Georgia](#)
- [Houston Behavioral Health](#)
- [Women's Healthcare of Georgia](#)
- [Women's Specialty Care](#)
- [OrthoGeorgia](#)
- [Pulmonary Associates & Sleep Disorders Center](#)
- [Skin Care Physicians of Georgia](#)
- [Urology Specialists of Georgia](#)
- [CTVS Wound & Vascular Care](#)
- [Primary Pediatrics](#) (five locations in Middle Georgia)
- [Renaissance Plastic Surgery Center](#)
- [BioLife Plasma Services](#)

Ambulance & Medical Transport Services in Middle Georgia

- Peach EMS
- Medical Center of Peach County
- [P.A.L.M.S. Medical Transport](#)
- Community Ambulance
- [Coast to Coast Medical Transportation, Inc.](#)
- Mid Georgia Ambulance - Post 1
- Southeast Ambulance Services
- [Ace Medical Transport](#)
- [Agape Medical Transport](#)
- ATS Ambulance Services
- [MedPro EMS Ambulance Service](#)
- [From The Heart Medical Transportation](#)
- [Veterans Medical Transport & EMS](#)

- [Perry: Air Evac EMS, Inc.](#), which operates Air Evac Lifeteam, is the leading air medical service in the United States, conducting its operations through more than 140 mutually supporting air medical bases across 15 states. The company has established itself as the preeminent provider of air ambulance services to communities in need of advanced emergency health care and rapid medical transport. Air Evac Lifeteam is part of the Global Medical Response family of companies. Global Medical Response, Inc., is the industry-leading air, ground, specialty and residential fire services and managed medical transportation organization.
- [Houston Healthcare EMS](#) is a not-for-profit division of Houston Healthcare, administered through Houston Healthcare System.
- [Houston County EMS](#): Each year, our men and women respond to over 15,000 requests for emergency service for Houston County 24 hours a day/seven days a week. In addition, we also provide non-emergency transportation and stand-by services within Middle Georgia. Striving to present outstanding support and medical care to the residents of our communities, Houston Healthcare EMS employs over 70 professional and highly trained Paramedics and EMT's that are dedicated to providing the most advanced care to the community we serve.

With five ambulance stations located throughout Houston County, including Robins Air Force Base, Houston Healthcare EMS is capable of reaching most any destination in Houston County within minutes. We also provide service to other areas of the state on a mutual aid basis. Our ambulance fleet of 10 ambulances receives careful attention, kept in top running condition and fully equipped in anticipation of the next call. We have incorporated a rigorous vehicle replacement schedule to assure that our vehicles are up-to-date.

Education

54,809 Total K-12 Public School Enrollment

- [Bibb County School System](#) (21,356 students)
 - 21 Elementary Schools
 - 6 Middle Schools
 - 6 High Schools
 - 4 Programs (Hutchings College and Career Academy, Elam Alexander Academy, Northwoods Academy, SOAR Academy)
 - [Superintendent Curtis Jones awarded 2019 National Superintendent of the Year](#)
- [Houston County School System](#) (29,770)
 - 25 Elementary Schools
 - 8 Middle Schools
 - 7 High Schools
 - [Forbes names Houston County Schools as #1 Employer in Georgia](#)
 - [My Home, My Houston - 2020 Houston County School District Highlights](#)
- [Peach County School System](#) (3,683)
 - 3 Elementary Schools
 - 2 Middle Schools
 - 1 High Schools

3,581 Total Private School Enrollment

- [Mount de Sales Academy](#)
- [Stratford Academy](#) (768)
- [First Presbyterian Day School](#)
- [Tattall Square Academy](#)
- [Central Fellowship Christian Academy](#)
- [Windsor Academy](#)
- [Covenant Academy](#)
- [Westfield Academy](#)

School System School Improvement Plans

- Peach County:
 - New Peach County High School: The new construction consists of approximately 194,000 sqft. The new High School opened for the start of the 2021/2022 school year. Construction of Phase II of the new Peach County High School includes a sports complex that hosts baseball, softball, two soccer practice fields, parking, restrooms, concessions, and batting cages. Completed in May of 2022.
 - Fort Valley Middle School Reroof: This project is complete. Complete tear off, insulation, decking, and membrane replacement.
 - Byron Middle School Reroof: Project completed.
 - Renovation/remodeling of the old Peach County High School and the transition to the new Peach County School System's Board of Education. Drawings finalized by the end of February of 2021. Construction almost complete. Both Fort Vally Middle School and Byron Middle School gym floors were refurbished in 2021 to include sanding, painting, striping, logos and finishing poly.
- Houston County:

- Since 2002, E-SPLOST funds have added a total of 1,916,344 square feet and 900 classrooms, in addition to renovation of more than 1,042,178 square feet of instructional space. Since 2017, every school in the district has been improved.
 - Built a new primary school; new competition gyms at four high schools; multipurpose athletic facility addition at Veterans High School; classroom addition at Northside High School and Veterans High School; auditorium renovations at Houston County High School, Northside High School, Perry High School and Warner Robins High School; renovated Perry High School's Herb St. John Stadium; and Canning Plant renovation.
 - During the 2017-2022 E-SPLOST, safety has been enhanced, facility needs addressed, and improvements made in technology and transportation.
 - 190 Million to be spent over next 5 years for: building new middle school, two new elementary schools and a new Performing Arts Center.
- Macon / Bibb County:
 - On November 5, 2019, the voters of Bibb County approved a renewal of the Education Special Purpose Local Option Sales Tax (ESPLOST) by more than 75 percent to help continue making improvements to our school district for another 5 years from January 1, 2021. This is the fifth ESPLOST campaign by the Bibb County School District, with previous campaigns in 2000, 2005, 2010 and 2015. A study by the Georgia Tech Research Institute found that more than 70 percent of sales tax funds are collected from non-Bibb County residents.
 - Previous ESPLOST campaigns have allowed the District to fund new schools such as Heard Elementary, Dr. Martin Luther King Jr. Elementary, Northwoods Academy, Howard Middle and High, Southwest High, Ingram-Pye Elementary, Central High, Ballard-Hudson Middle, Bruce Elementary, Alexander II Magnet, Rutland Middle and High, Skyview Elementary, Vineville Academy, and more; facility improvements and upgrades; athletic improvements and upgrades; technology infrastructure improvements; security enhancements; and more. An overview of projects funded by ESPLOST campaigns is below.

ESPLOST Goals: Although some are school-specific, the majority of the projects will involve and improve facilities and services district wide. More efficient buildings, facilities and vehicles mean reduced maintenance and operations costs. Security improvements increase safety on our campuses. State-of-the-art technology devices and software provide the tools needed for today's learning environments. All BCSD students will benefit.

College and Career Academies

- [W.S. Hutchings College and Career Academy](#)
 - Aircraft, Automotive, Audio Video Film, Banking Finance, Certified Warehouse Distribution, Construction, Cyber Security, Engineering, Graphic Design, Industrial Systems Technology, Welding
- [Houston County Career Academy](#)
 - Aircraft Structural Technology, Automobile Maintenance, Engineering Technology Electronics, Information Technology, Industrial Maintenance

300 Licensed Child Care Facilities within 30 miles of Mega Site

- Results based on search of Georgia Department of Early Care and Learning
- [Child Care Search](#)

Research Universities

- [Fort Valley State University](#) (6.5 miles)
 - FVSU has repeatedly been recognized by multiple publications as the top public historically black college in Georgia. Located on the second largest acreage of any Georgia university, it is the only university in the world which at once is a University System of Georgia institution, a historically black university, and an 1890 land-grant institution, with a directive to use knowledge to improve the lives of students and non-students alike.
 - [Cooperative Developmental Energy Program](#) (CDEP)
 - [Undergraduate Research](#)
 - [FVSU Ag Research Focus Area - Climate Change](#)
 - [FVSU Emerging Technologies Center of Excellence](#)
- [Georgia Tech](#) Research Institute (GTRI) (16 miles)
 - [GTRI Warner Robins](#) is the onsite liaison between GTRI and [Robins Air Force Base \(RAFB\)](#), and provides immediate reaction to RAFB customer needs with extensive reach-back to GTRI's Atlanta-based laboratories.
- [Georgia Tech Research Institute](#)
- [Mercer University](#) (32 miles)
 - Mercer University provides opportunities for undergraduate, graduate and professional-level research and scholarship among students and faculty.
 - [Discovery & Innovation](#)
 - [Undergraduate Research](#)
 - [Research and Innovation - School of Engineering](#)
 - [Student Research | Mercer School of Medicine](#)
 - [Graduate and Professional Research](#)
 - [Research | Biochemistry and Molecular Biology](#)

- [Summer Student Research Program](#)
- [Mercer Engineering Research Center](#) (MERC) has been a proven asset to Middle Georgia's companies since 1985. MERC delivers unmatched interdisciplinary engineering and applied scientific expertise with 160 full time engineers, scientists, analysts, logisticians and management experts. MERC has provided support and expertise to all arms of the military, particularly the Warner Robins Air Logistics Complex. MERC has also completed successful projects with Northrop Grumman, Lockheed Martin, BAE Systems, Gulfstream and Raytheon.
- [ATTC-Middle Georgia](#) is another resource serving the needs of Robins Air Force Base and local employers, specifically working with the Air Force Advanced Technology and Training Center. The Air Force opened the Advanced Technology and Training Center in Warner Robins in 2018 as a place to train on and test new technologies without interrupting actual aircraft maintenance production.
- [MGA Center for Software Innovation](#): <https://www.mga.edu/computing/software-innovation.php>The Center for Software Innovation is a partnership between Middle Georgia State University (MGA) and Robins Air Force Base (RAFB). The Center is designed to identify software development projects that will elevate regional companies, nonprofits, startups, and other organizations. The Center is housed at the University's Warner Robins Campus in Thomas Hall where the School of Computing facilities serve as the Center's base of operations.
- [Atrium Health Center for Innovation and Disruption](#)

Four Year Educational Institutions

- [Fort Valley State University](#)
- [Georgia College and State University](#)
- [Mercer University](#)
- [Wesleyan College](#)
- [Middle Georgia State University](#)
- [Georgia Military College](#) (has some four-year programs)

Two Year Educational Institutions

- [Central Georgia Technical College](#)
 - [Programs of study](#)
 - 8, 219 (2020)
 - Multiple campuses: Warner Robins Campus, Macon Campus, Milledgeville Campus, Crawford County Center, Hawkinsville WDC, Jones County Center, Monroe County Center, Peach County WDC, Putnam County Center, Twiggs County Center, VECTR Center
- [Central Georgia Technical College Training Programs](#)
 - Programmable Logic Controls, Motor Controls, Lean / Six Sigma / 5S, Aircraft Maintenance, Electronic Circuits, Master's Electrical License Prep, CPR, Basic Life Support, OSHA, Arc Flash Training, Lock-Out / Tag-Out, HazMat / HazCom, Powered Industrial Truck, CyperSAFE, Comp TIA A+, Network, Security+, Operations Management, Customer Service, Teamwork, Work Ethics, Peer to Leader
- [Georgia Military College](#) (GMC) is one of America's best public-independent junior colleges and is one of only five military junior colleges nationwide. GMC is one of the fastest growing and second largest two-year colleges in the state with more 6,000 students enrolled at six campuses across Georgia. GMC is accredited by the Southern Association of Colleges and Schools to award 23 different associate degrees. Approximately 2,000 students are enrolled at the Warner Robins's campus for GMC.

Other Educational Programs and Initiatives

- [Georgia VECTR Center](#)
 - Georgia VECTR Center serves as a gateway for veterans' re-entry into Georgia's public postsecondary educational systems and workforce. The center was established by the state and is designed to serve veterans and their families through career counseling, educational coaching, workforce training, and more.
 - The VECTR Center provides unique, accelerated programs in high demand and strategic industries tailored to abbreviate the process of receiving post-secondary certificates and degrees by recognizing the extensive training veterans receive during their military service.
 - Through their on-site partners (Georgia Department of Veterans Service, Georgia Department of Labor, Department of Veterans Affairs and United Way/Mission United) they provide a one-stop-shop for veterans seeking benefits, educational opportunities, employment services and links to community resources.
 - Refrigeration Systems Components, HVACR Motors, Oxyfuel and Plasma Cutting, Flat Shielded Metal Arc Welding, Gas Metal Arc Welding, Gas Tungsten Arc Welding, Direct Current Circuits, Alternating Current Circuits, Electrical Prints / Schematics / Symbols, Commercial Wiring, Industrial Wiring Applications, Industrial Motors, Industrial Mechanics, Fluid Power Systems, Certified Ethical Hacker, Security A+
- [FireStarter FABlab](#)
- FireStarter FABlab is designed for custom digital fabrication and contains all the tools necessary to rapidly conceptualize, digitize, fabricate, and assemble a wide range of physical projects.
- 7,000 square foot facility
- CNC Machinery, Photopolymer 3D Printing, Fused Deposition 3D Printing, Laser Cutting, Three Axis Machining, Vinyl and Film Cutting, 3D Scanning, Circuit Fabrication
- [WorkSource Georgia - Middle Georgia Workforce Development and WIOA](#)
 - Middle Georgia Workforce Development is operated by the Middle Georgia Consortium Inc. (MGCI).
 - The Consortium is governed by Local Elected Officials (LEO) Board and Workforce Development Board (WDB) for the ten counties served (Baldwin, Crawford, Houston, Jones, Monroe, Peach, Pulaski, Putnam, Twiggs and Wilkinson). The mission of the Consortium under the direction of the WDB is to develop and maintain partnerships that make employment resources accessible to job seekers and employers. They are committed to building a world-class workforce system designed to meet the needs of employers and the employment needs of Middle Georgians.
- [Peach Regional Workforce Development Center](#)

- [Project Synergy](#)

Best Life Work Force

01:54 |

Top 10 Largest Employers

- [Robins Air Force Base](#) (22,300)
- [Geico](#) (5,690)
- [The Medical Center of Central Georgia](#) (3,916)
- [Bibb County Board of Education](#) (3,700)
- [Houston Healthcare](#) (2,355)
- [Perdue Farms](#) (2,267)
- [Macon-Bibb County Government](#) (2,103)
- [Amazon](#) (1,900)
- [Blue-Bird Corporation](#) (1,700)
- [Coliseum Health Systems](#) (1,400)

Recruiting and Hiring

Our partnership with [The Middle Georgia Innovation Project](#) will enhance opportunities for variety of employment opportunities for a Company and their spouses. We have been preparing Central Georgia for growth and job demand for several years. We are ready!

Helping a Company to find the best and brightest workforce is a top priority. We pledge to take our recruitment assistance one step further and focus on the entire family unit. A customized website for spouses and dependents of a Company will be developed providing access to job openings in Middle Georgia. The service we will offer will be personalized to each individual with an opportunity to find jobs that fit their interests and skill sets and a pathway for accessing additional training and education if needed. Coupled with the online platform will be a response team to offer more one-on-one counseling and guidance on needs from housing, to education to health care and beyond. Our goal is to make all feel "at home" as quickly as possible.

The economic developers across the 11-county region are members of a proactive group named the Middle Georgia Economic Alliance (MGEA.) The group has been working together as a collaborative for the past 15 years. Workforce development has become a focus for their organization and organizations across the nation that are in the business of recruiting new companies and responding to the needs of existing companies in their communities. For this reason, the economic developers are working closely to enhance the relationships between their educational institutions and local industries to communicate the needs of employers and provide relevant career pathways for students. A regional job portal, [MGEA Works](#), is available to assist employers and job seekers to better connect.

[Helping Middle Georgians Find Employment](#)

Temporary Space

The Central Georgia Team will collaborate to provide multiple options to serve the needs of a Company during the scale up process. Below are several properties that may be of interest to training, product development, and manufacturing.

- [Cumberland Western Campus](#) - 290,000 square feet of professional office space and 1,500,000 square feet of manufacturing space. Located at the intersection of Interstate 16 and Interstate 75 in Macon. Approximately 34 miles from the Middle Georgia Mega Site.
- [Peach Regional Workforce Development Center](#) - 11,000 square foot facility complete with multiple industrial labs and computer labs. Blue Bird Bus Company had used the facility recently for training to include their [industry leading electric bus](#).
- [Peach County High School Campus](#) - this 200,000 square foot campus is complete with a 3,000 square foot auditorium, technology labs, mechanical labs and classroom space. Peach County is moving to a new facility near the Middle Georgia Mega Site in the fall of 2021.

Employee Relocation Assistance

The Central Georgia Team is committed to aligning our local relationships with residential lenders and real estate institutions to provide discounted rates and fees on behalf of the employees of a Company. Upon approval from a Company, Central Georgia Leadership will work to negotiate with preferred lenders and real estate brokers on discounted services to assist in the relocation of employees. Our goal would be to provide for the opportunity to receive reduced real estate commissions and lending fees for all employees relocating from outside of Central Georgia.

Quality of Life in Middle Georgia



Georgia National Parks

- [Georgia National Parks website](#)
- [Ocmulgee Mounds](#) / Macon (30 minutes)
- [Andersonville / Camp Sumter](#) (45 minutes)
- [Appalachian Trail / Lookout Mountain](#) (3 hours 30 minutes)
- [Chattahoochee River](#) (1 hour 45 minutes)
- [Chickamauga & Chattanooga](#) (3 hours 20 minutes)
- [Cumberland Island](#) (3 hours 42 minutes)
- [Fort Frederica / St. Simons Lighthouse Museum](#) (3 hours 30 minutes)
- [Fort Pulaski](#) / Savannah (3 hours)
- [Jimmy Carter National Historic Park / Jimmy Carter Presidential Library and Museum](#) (1 hour 36 minutes)
- [Kennesaw Mountain](#) (2 hours 30 minutes)
- [Martin Luther King Jr.](#) / Atlanta (1 hour 34 minutes)

Georgia State Parks

- [Georgia State Parks website](#)
- [Providence Canyon - Georgia's Little Grand Canyon](#) (1 hour 40 minutes)
- [High Falls](#) / Forsyth (55 minutes)
- [Indian Springs](#) (59 minutes)
- [Jarrell Plantation](#) (49 minutes)
- [Roosevelt Little Whitehouse](#) (1 hour 21 minutes)

- [Veterans / Lake Blackshear](#) (58 minutes)
- [Skidaway Island State Park](#) (3 hours)

48 Local Public Parks

- [Bibb County Parks and Recreation](#)
- [Houston County Parks and Recreation](#)
- [Peach County Parks and Recreation](#)
- [Warner Robins Parks and Recreation](#)
- [Perry Parks and Recreation](#)

Mountains

- [Brasstown Bald](#) (3 hours 32 minutes)
- [Pine Mountain](#) / Lagrange (1 hour 32 minutes)
- [Stone Mountain](#) (1 hour 45 minutes)

Beaches

- Tybee Island / Atlantic (3 hours 3 minutes)
- Jekyll Island / Atlantic (3 hours 30 minutes)
- Saint Simons / Atlantic (3 hours 30 minutes)
- Hilton Head S.C. / Atlantic (3 hours 10 minutes)
- Daytona Beach F.L. / Atlantic (5 hours)
- Panama City Beach F.L. / Gulf of Mexico (4 hours 30 minutes)
- Destin F.L. / Gulf of Mexico (4 hours 51 minutes)
- Gulf Shores A.L. / Gulf of Mexico (5 hours 41 minutes)
- Cocoa Beach F.L. (5 hours 51 minutes)

Lake Life

- [Lake Tobesofkee](#) (30 minutes)
- [Lake Sinclair](#) (1 hour 15 minutes)
- [Lake Oconee](#) (1 hour 30 minutes)
 - [Reynolds at Lake Oconee](#)
- [Lake Juliette](#) (44 minutes)
- [Lake Blackshear](#) (56 minutes)

Golf

- [Houston Lake Country Club](#) (18 minutes)
- [The Landings Golf Club](#) (25 minutes)
- [Southern Hills Golf Club](#) (36 minutes)
- [Idle Hour Country Club](#) (35 minutes)
- [The Brickyard Golf Club](#) (37 minutes)
- [River Forest Golf Club](#) (50 minutes)

Rivers and Streams

- [Ocmulgee River](#) (30 minutes)
 - [Amerson River Park](#)
- [Flint River](#) (15 minutes)
- [Oconee River](#) (1 hour)

Family Fun

- [Middle Georgia Performing Arts Center](#)
- [Georgia Aquarium](#)
- [Theatre Macon](#)
- [Macon Little Theatre](#)
- [The Grand Opera House](#)

- [Macon City Auditorium](#) (concerts, shows, ice skating, conventions, etc.)
- [Hargray Capitol Theatre](#) (formerly Cox Capitol Theatre)
- [The Allman Brothers Band Museum at The Big House](#)
- [The Douglass Theatre](#)
- [Museum of Arts & Sciences](#)
- [Museum of Aviation](#)
- [Tubman Museum](#)
- [Chattahoochee River Rafting](#) (world's longest urban whitewater course)
- [Ocmulgee Heritage Trail](#)
- [Ocmulgee Mounds National Historical Park](#)
- [Lane Southern Orchards](#) (farm-fresh peaches and nuts; playground, market, cafe, festivals, etc.)
- [Rigby's Entertainment Complex](#)
- [Rigby's Water World](#)
- [Callaway Gardens](#)
- [Massee Lane Gardens](#)
- [The Hay House](#)
- [The Big Peach Antiques Mall](#) (33,000 square feet of antiques and collectibles)
- [Wild Animal Safari](#)
- [Go Fish Education Center](#)
- [Georgia National Fairgrounds & Agricultural Center](#) (annual fairs, concerts, RV camping, derbies, horse shows, car/truck shows, etc.)
- [Central City Park](#)
- [Luther Williams Field & The Stadium](#)

Wedding & Special Event Venues

- [Southern Bridle Farms](#)
- [The Venue at Tryphena's Garden](#)
- [Thistlewood Farms](#)
- [The Wedding Barn at L'Horne](#)
- [Cannonball House](#)
- [Plantation Farms](#)

Dining Out (Local Establishments) (Ubereats, Doordash, Grubhub, Slice and ChowNow Services)

- [The Downtown Grill](#)
- [The Rookery](#)
- [The Dovetail](#)
- [The Back Burner](#)
- [Bossa Novas](#)
- [Jim Shaw's Seafood](#)
- [Kudzu Seafood Company](#)
- [Ladda Bistro](#)
- [Oliver's Bistro](#)
- [Tzango's](#)
- [Parish on Cherry](#)
- [Michael's on Mulberry](#)
- [Tokyo Alley](#)
- [Edgar's Bistro](#)
- [Brasserie Circa](#)
- [Labella Morelia](#)
- [Natalia's](#)

- [Grits Cafe](#)
- [The Swanson](#)
- [Prop's](#)

Dining Out (Franchise)

- Longhorns
- Outback
- Cheddars
- Olive Garden
- Panera Bread
- Atlanta Bread Company
- Carraba's
- BoneFish
- Texas Roadhouse
- O'Charley's
- and many more.

Brew Pubs

- [Ocmulgee Brewpub](#)
 - 9 locally brewed beers on tap
- [Macon Brew Company and Tap Room](#)
 - 14 locally brewed beers on tap
- [Piedmont Brewery and Kitchen](#)
 - 11 locally brewed beers on tap
- [Fall Line Brewing Co.](#)
- [Fox City Brewing](#)
- [Tap and Pour](#)
- [Black Barley Bar](#)
- [Just Tap'd](#)
- [Cashman's Pub](#)
- [Growler USA](#)

Night Life

- [The Hummingbird Stage and Tap Room](#)
- [The Crazy Bull](#)
- [The Society Garden](#)
- [Bearfoot Tavern](#)
- [Main Street Bar](#)
- [Dueling Piano Bar](#)
- [Maniax Axe Throwing Bar](#)
- [Reboot Macon Retro Arcade Bar](#)
- [Comics Plus of Macon](#)
- [Pin Strikes Bowling and Arcade](#)
- [The Shoppes at River Crossing](#)

From House to Home

- [994 Homes available in Houston County from \\$180,000 to \\$500,000](#)
- 90 units new construction expansion (1-3 bedrooms) completed fall of 2021
- New 300 unit single-family homes under construction
- New apartment complex (64-165 units) classified as workforce housing under construction
- 1500 residential lots in subdivisions currently under construction or have preliminary approvals

- 72 unit apartment complex completed in 2021
- 160 new apartments approved and under construction
- [389 Homes Available in Bibb County from \\$180,000 to \\$500,000](#)
- [108 Homes Available in Peach County from \\$180,000 to \\$500,000](#)
- [150 Homes Available in Monroe County from \\$180,000 to \\$500,000](#)
- [40+ Apartment Complexes Available in Houston County with 596 apartments available as of June 2022](#)
- [632 available apartment units right now and more are added each day.](#)
- [50+ Apartments / Lofts Available in Macon](#)

Adventurous Thinkers

"Testimony is contingent on experience, that's why we're all free spirits"

Phil Collins

Our narrative on what makes Macon, Warner Robins & the entire Middle Georgia region attractive to talent and "adventurous thinkers", comes not from our lips, but from those who have lived it and choose to call our community home.



Call: (478) 825-3826 or peachcountydevelopment@gmail.com 425 James E. Khoury Drive Unit B Fort Valley, Georgia 31030
©2022 Development Authority of Peach County, Georgia - All Rights Reserved Site developed by [Marketing Alliance, Inc.](#)