

1220 S SANTA FE AVE

EDMOND, OK 73003



PROPERTY DESCRIPTION

Located at the ideal location at the corner of 15th and Santa Fe, 1220 S Santa Fe presents an ideal opportunity for an owner-user aiming to establish or expand their business footprint. With 9,353 SF of space, the building was well designed to include a number of offices along the window line. It also has two conference rooms, accommodating meetings of all sizes and fostering a productive work environment. The thoughtful layout and strategic location make it a perfect setting for businesses looking for a standalone presence in a thriving area.

PROPERTY HIGHLIGHTS

- Ample surface parking
- Four entry/exit points
- Two conference rooms
- 20 offices along the window line
- 1 mile from Broadway

OFFERING SUMMARY

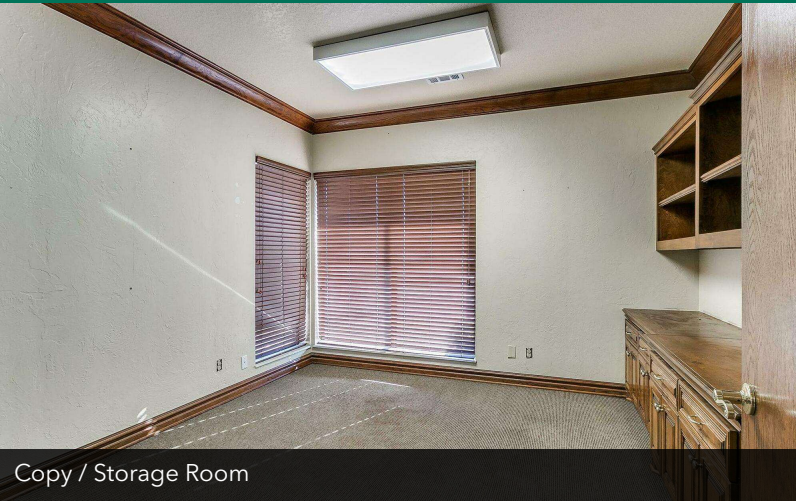
Sale Price:	\$1,600,000
Lease Rate:	\$19.00 SF/yr (FS)
Building Size:	±9,353 SF
Suite B For Lease:	±1,754 SF
Lot Size:	3.23 AC

IAN SELF

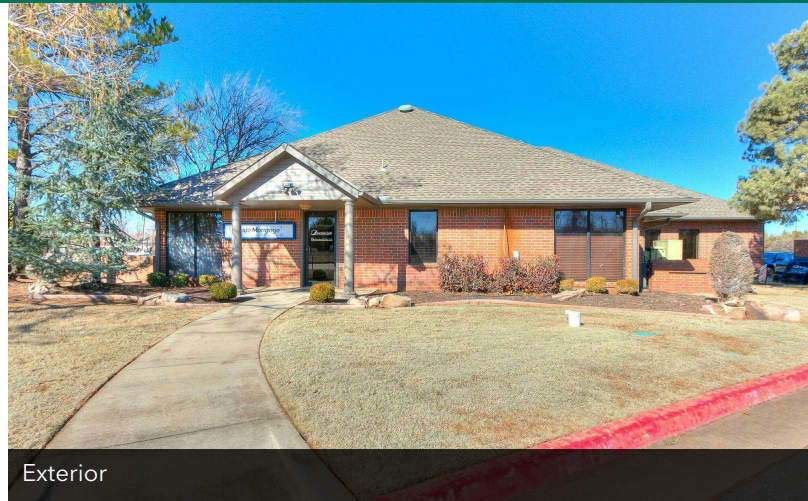
iself@priceedwards.com
O: 405.239.1271

1220 S SANTA FE AVE

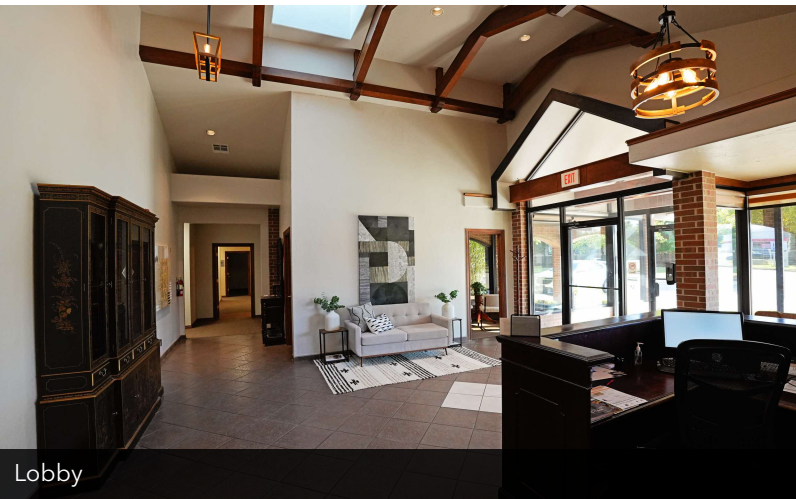
EDMOND, OK 73003



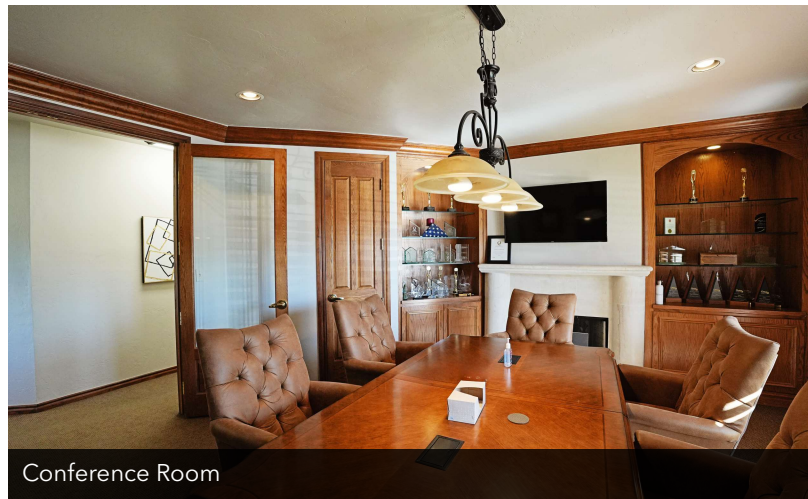
Copy / Storage Room



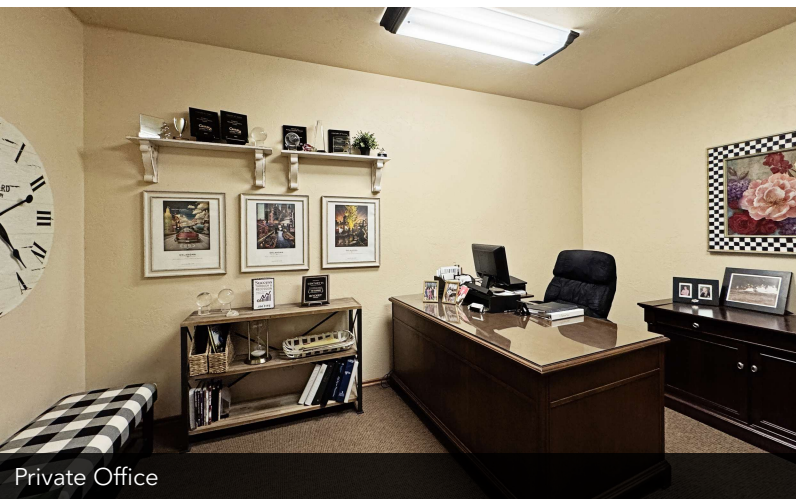
Exterior



Lobby



Conference Room



Private Office



Restroom

IAN SELF

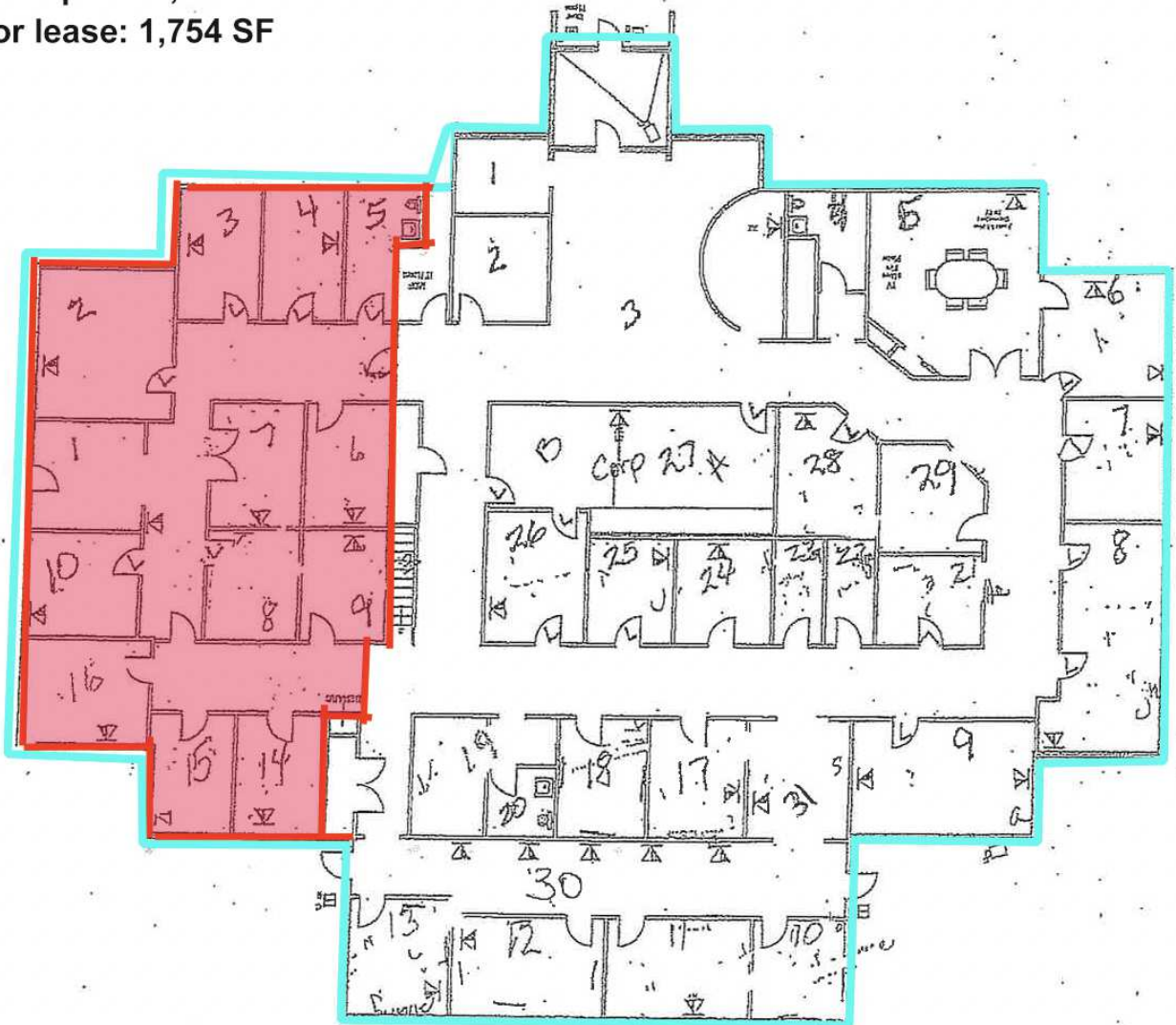
iself@priceedwards.com

O: 405.239.1271

1220 S SANTA FE AVE

EDMOND, OK 73003

- Entire floor plan: 9,353 SF
- Space for lease: 1,754 SF



IAN SELF

iself@priceedwards.com

O: 405.239.1271