

FOR LEASE

# CITY NATIONAL BANK BUILDING

606 SOUTH OLIVE ST  
LOS ANGELES, CA 90014



13 SUITES  
AVAILABLE



291K TOTAL  
BUILDING SF

## *Newly Modernized Office Space For Lease in DTLA*

Newly modernized elevator system, building lobby,  
security systems and cabs

Proximity to retail, restaurants and private clubs

Landlord will demise and/or build-to-suit all  
available suites

On-site secured parking

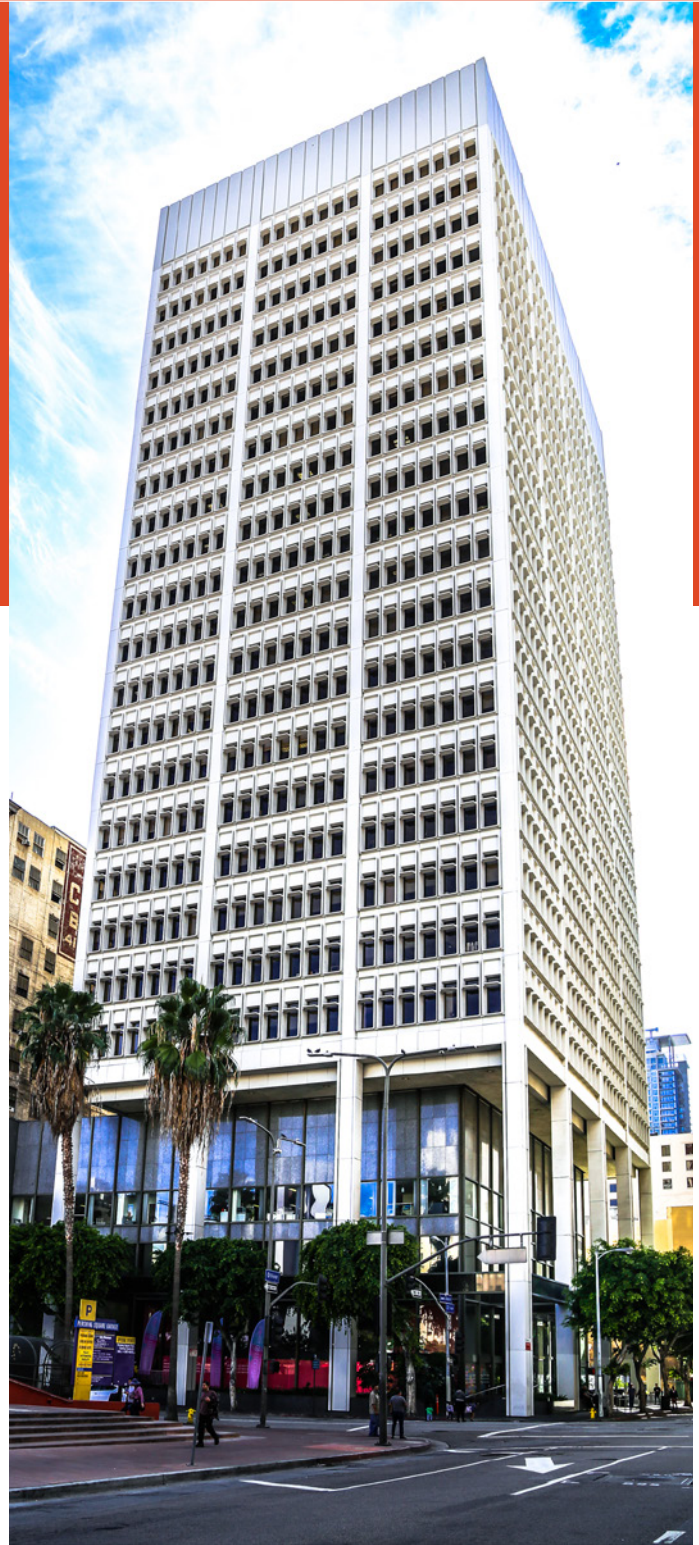
Tunnel to the Pershing Square parking garage and  
Metro Station

Asking rate \$36.00/SF/annum FSG

Creative and traditional office space use

24-hour security for building

Over 90,000 contiguous square feet available



*For more leasing  
information contact*

JOHN ANTHONY, SIOR  
213.225.7218  
john.anthony@kidder.com  
LIC N° 01226464

CHRISTOPHER STECK, CCIM  
213.225.7231  
christopher.steck@kidder.com  
LIC N° 01841338

KIDDER.COM | ANTHONYSTECKTEAM.COM

This information supplied herein is from sources we deem reliable. It is provided without any representation, warranty, or guarantee, expressed or implied as to its accuracy. Prospective Buyer or Tenant should conduct an independent investigation and verification of all matters deemed to be material, including, but not limited to, statements of income and expenses. Consult your attorney, accountant, or other professional advisor.

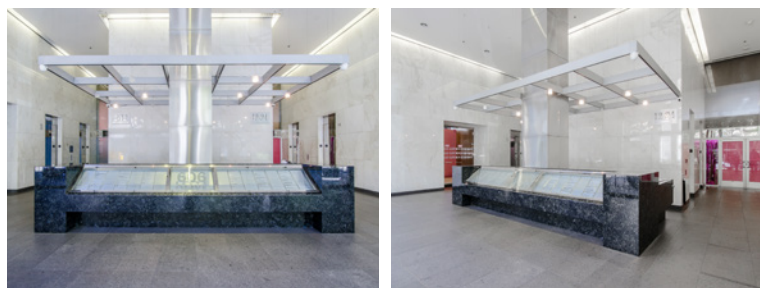
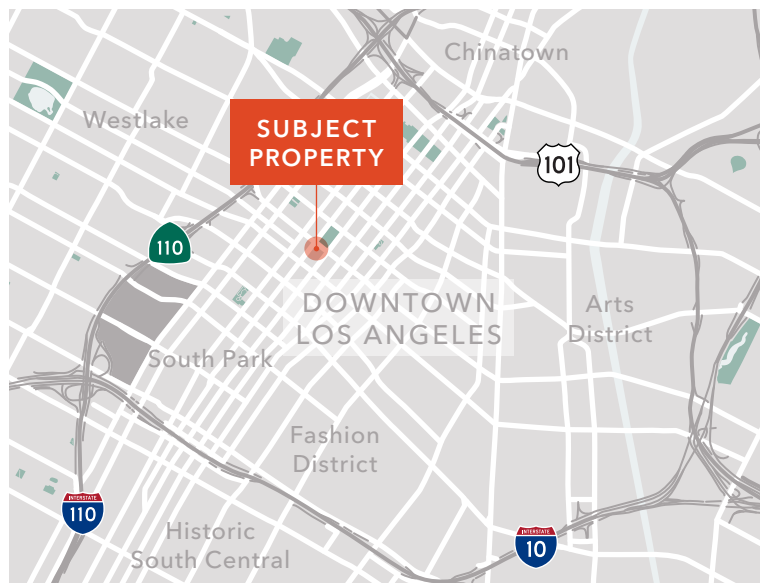


# CITY NATIONAL BANK BUILDING

## AVAILABILITIES

Suite	RSF	Comments
100	10,172	Possible full floor retail space.
300	12,420	Fully built out and high-quality full floor office space
500	14,176	Mixture of perimeter offices and open space.
620	2,765	Reception, perimeter offices, conference room, kitchen, and IT.
640	3,567	Reception, perimeter offices, conference room, kitchen, and IT.
900	8,555	Excellent park views. Fully built out and improved jewelry suite that includes all the security and design features required.
1010	1,605	Reception, work room, kitchen, and 2 offices.

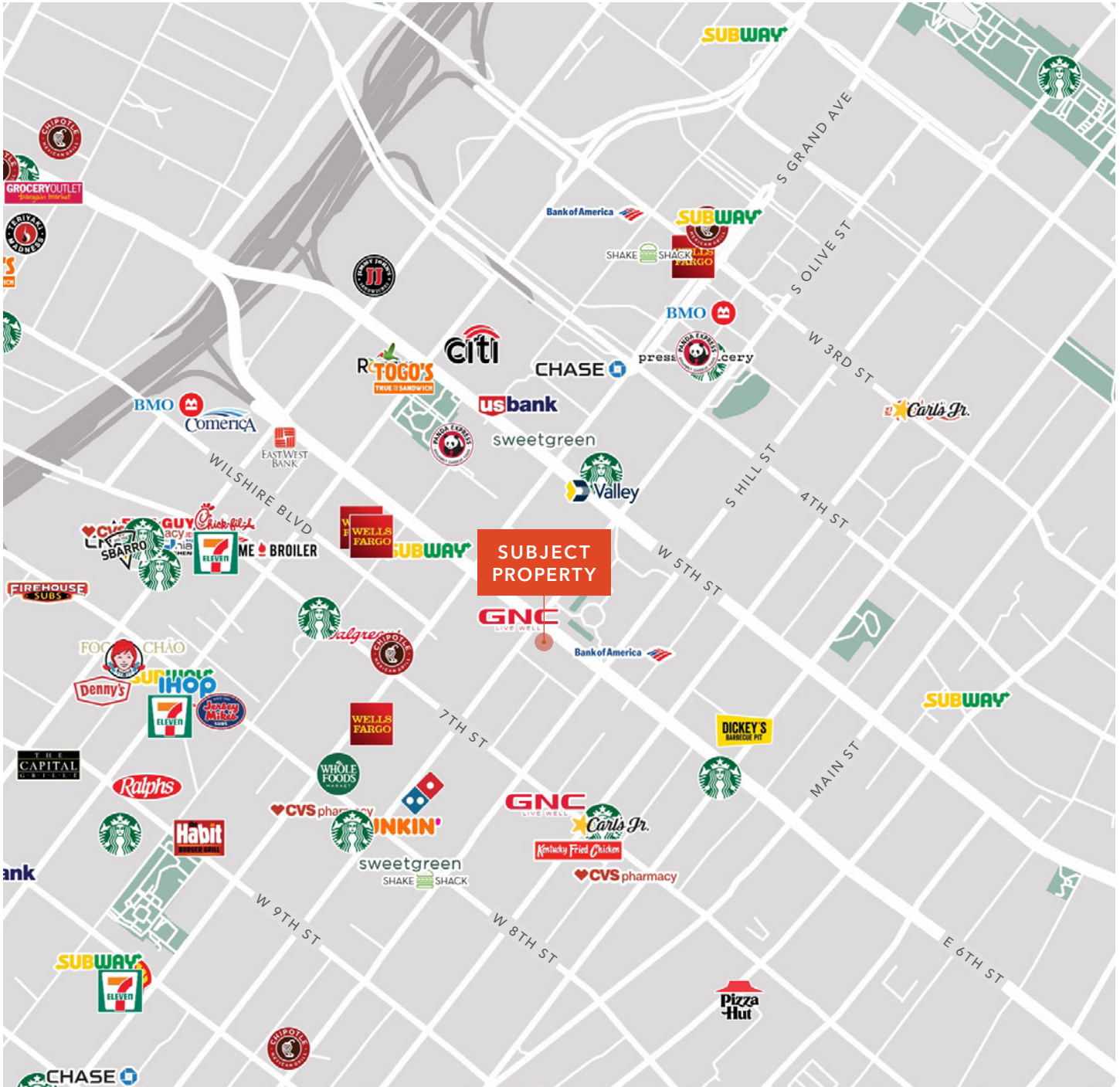
Suite	RSF	Comments
1155	1,375	Reception, perimeter offices, conference room, kitchen, and IT.
1200	13,454	Reception, 13 perimeter offices, conference rooms, kitchen, and open area.
1400	14,176	Full floor in shell condition.
1500	14,578	Full floor in shell condition.
1600	14,621	Full floor in shell condition.
1700	14,621	Full floor in shell condition.
1800	14,621	Full floor in shell condition.
1940	1,648	Reception, offices, and open area.



KIDDER.COM | ANTHONYTECKTEAM.COM

This information supplied herein is from sources we deem reliable. It is provided without any representation, warranty, or guarantee, expressed or implied as to its accuracy. Prospective Buyer or Tenant should conduct an independent investigation and verification of all matters deemed to be material, including, but not limited to, statements of income and expenses. Consult your attorney, accountant, or other professional advisor.





*For more leasing  
information contact*

JOHN ANTHONY, SIOR  
213.225.7218  
john.anthony@kidder.com  
LIC N° 01226464

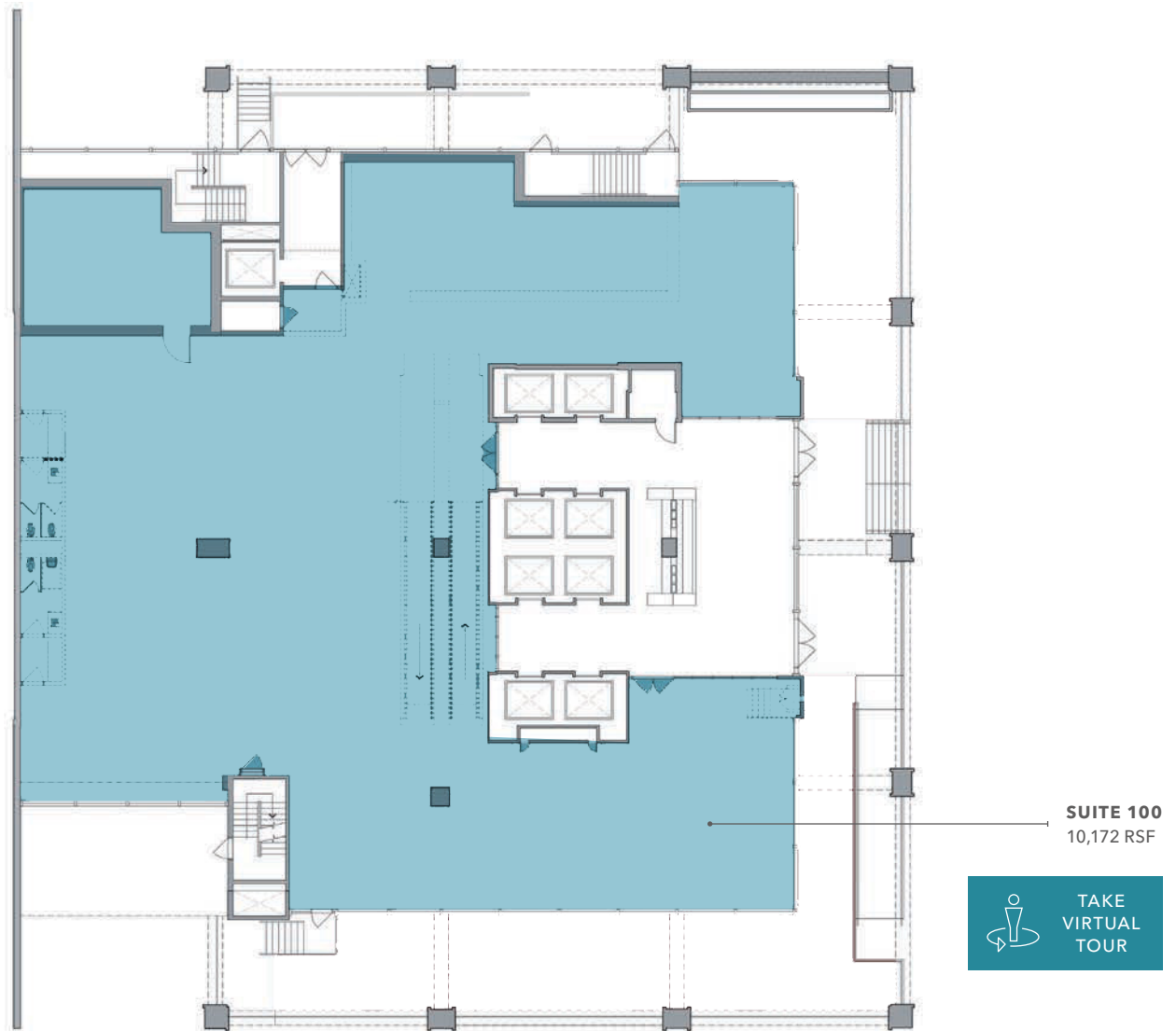
CHRISTOPHER STECK, CCIM  
213.225.7231  
christopher.steck@kidder.com  
LIC N° 01841338

KIDDER.COM | ANTHONYSTECKTEAM.COM

This information supplied herein is from sources we deem reliable. It is provided without any representation, warranty, or guarantee, expressed or implied as to its accuracy. Prospective Buyer or Tenant should conduct an independent investigation and verification of all matters deemed to be material, including, but not limited to, statements of income and expenses. Consult your attorney, accountant, or other professional advisor.



# 1ST FLOOR



*For more leasing  
information contact*

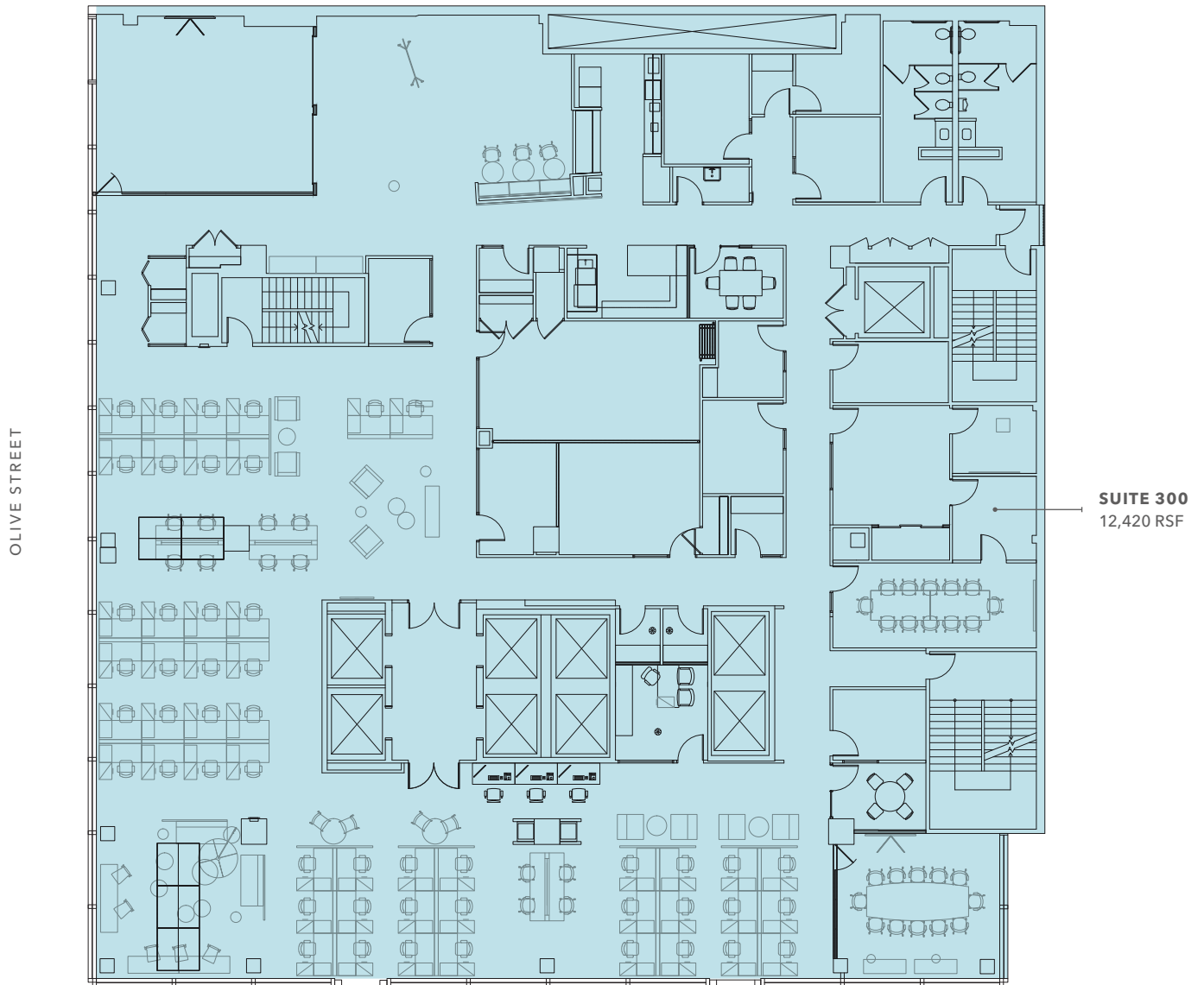
**JOHN ANTHONY, SIOR**  
213.225.7218  
john.anthony@kidder.com  
LIC N° 01226464

**CHRISTOPHER STECK, CCIM**  
213.225.7231  
christopher.steck@kidder.com  
LIC N° 01841338

**KIDDER.COM | ANTHONYSTECKTEAM.COM**

This information supplied herein is from sources we deem reliable. It is provided without any representation, warranty, or guarantee, expressed or implied as to its accuracy. Prospective Buyer or Tenant should conduct an independent investigation and verification of all matters deemed to be material, including, but not limited to, statements of income and expenses. Consult your attorney, accountant, or other professional advisor.

## 3RD FLOOR



*For more leasing  
information contact*

**JOHN ANTHONY, SIOR**  
213.225.7218  
john.anthony@kidder.com  
LIC N° 01226464

**CHRISTOPHER STECK, CCIM**  
213.225.7231  
christopher.steck@kidder.com  
LIC N° 01841338

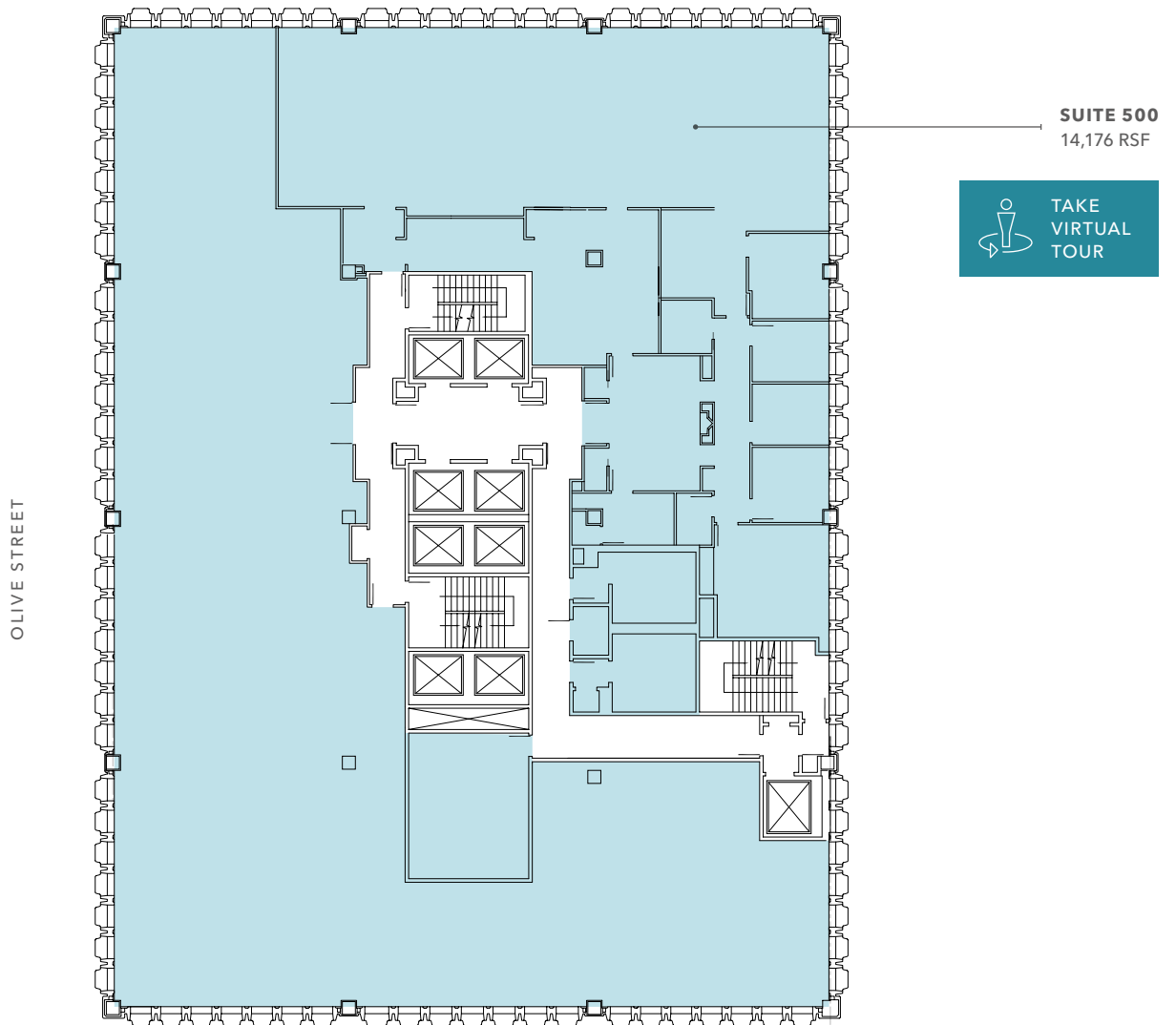
**KIDDER.COM | ANTHONYSTECKTEAM.COM**

This information supplied herein is from sources we deem reliable. It is provided without any representation, warranty, or guarantee, expressed or implied as to its accuracy. Prospective Buyer or Tenant should conduct an independent investigation and verification of all matters deemed to be material, including, but not limited to, statements of income and expenses. Consult your attorney, accountant, or other professional advisor.



# 5TH FLOOR

6TH STREET | PERSHING SQUARE VIEWS



*For more leasing  
information contact*

**JOHN ANTHONY, SIOR**  
213.225.7218  
john.anthony@kidder.com  
LIC N° 01226464

**CHRISTOPHER STECK, CCIM**  
213.225.7231  
christopher.steck@kidder.com  
LIC N° 01841338

**KIDDER.COM | ANTHONYSTECKTEAM.COM**

This information supplied herein is from sources we deem reliable. It is provided without any representation, warranty, or guarantee, expressed or implied as to its accuracy. Prospective Buyer or Tenant should conduct an independent investigation and verification of all matters deemed to be material, including, but not limited to, statements of income and expenses. Consult your attorney, accountant, or other professional advisor.

## 6TH FLOOR

6TH STREET | PERSHING SQUARE VIEWS



*For more leasing  
information contact*

**JOHN ANTHONY, SIOR**  
213.225.7218  
john.anthony@kidder.com  
LIC N° 01226464

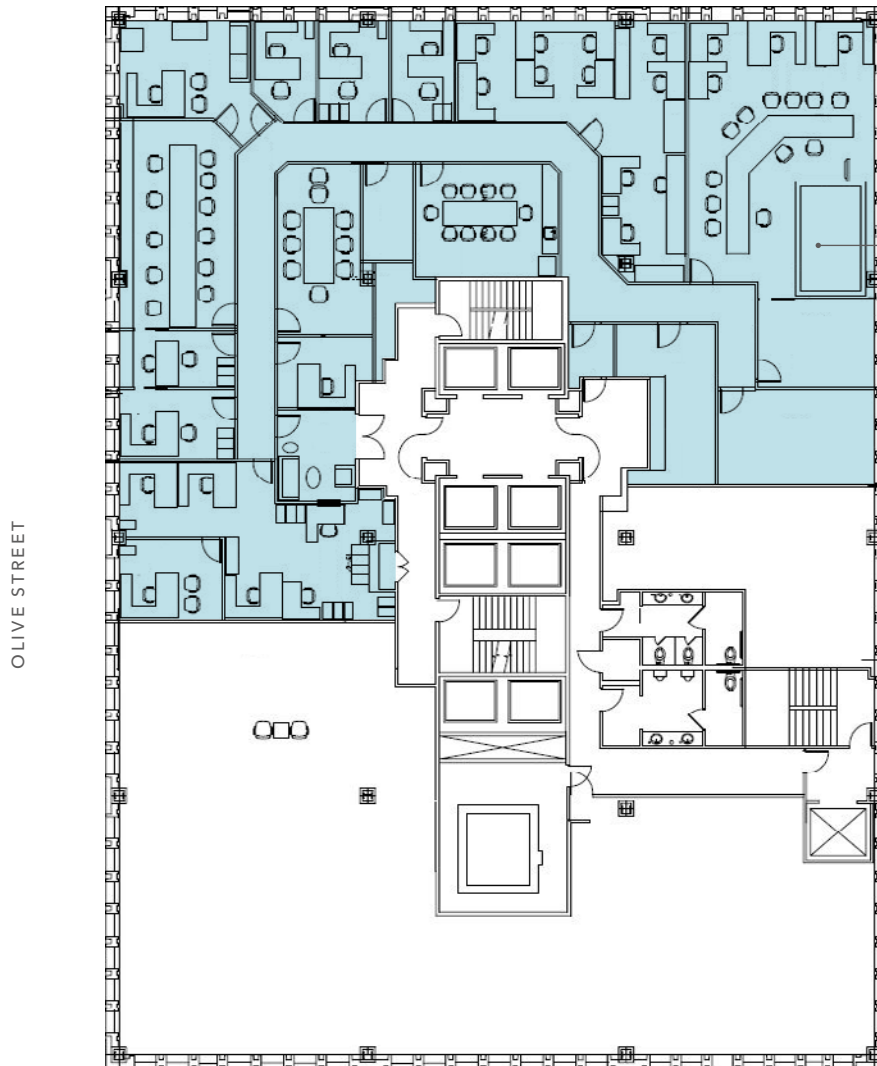
**CHRISTOPHER STECK, CCIM**  
213.225.7231  
christopher.steck@kidder.com  
LIC N° 01841338

**KIDDER.COM | ANTHONYSTECKTEAM.COM**

This information supplied herein is from sources we deem reliable. It is provided without any representation, warranty, or guarantee, expressed or implied as to its accuracy. Prospective Buyer or Tenant should conduct an independent investigation and verification of all matters deemed to be material, including, but not limited to, statements of income and expenses. Consult your attorney, accountant, or other professional advisor.

# 9TH FLOOR

6TH STREET | PERSHING SQUARE VIEWS



**SUITE 900**  
8,555 RSF



TAKE  
VIRTUAL  
TOUR

*For more leasing  
information contact*

**JOHN ANTHONY, SIOR**  
213.225.7218  
john.anthony@kidder.com  
LIC N° 01226464

**CHRISTOPHER STECK, CCIM**  
213.225.7231  
christopher.steck@kidder.com  
LIC N° 01841338

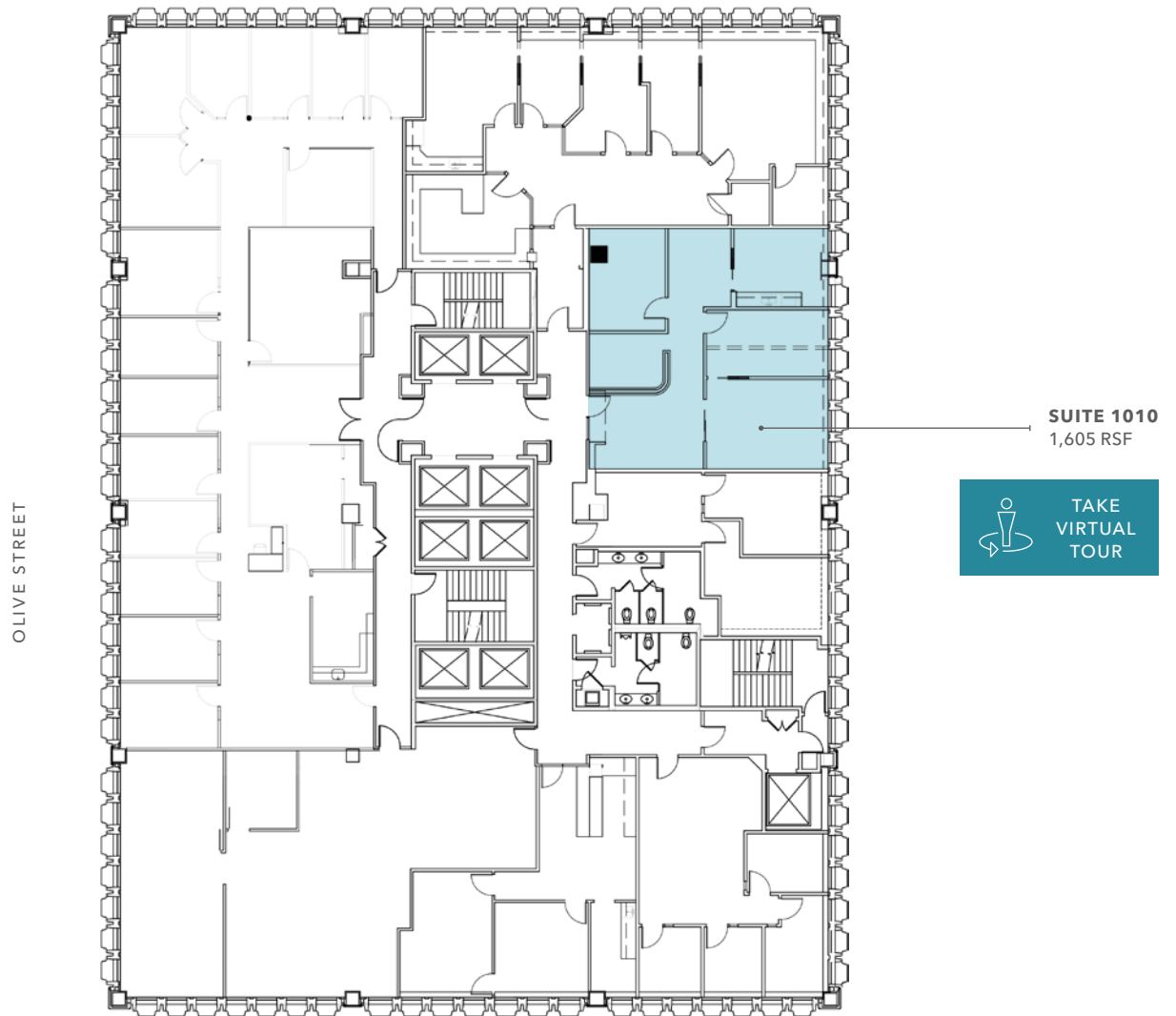
**KIDDER.COM | ANTHONYSTECKTEAM.COM**

This information supplied herein is from sources we deem reliable. It is provided without any representation, warranty, or guarantee, expressed or implied as to its accuracy. Prospective Buyer or Tenant should conduct an independent investigation and verification of all matters deemed to be material, including, but not limited to, statements of income and expenses. Consult your attorney, accountant, or other professional advisor.



# 10TH FLOOR

6TH STREET | PERSHING SQUARE VIEWS



*For more leasing  
information contact*

**JOHN ANTHONY, SIOR**  
213.225.7218  
john.anthony@kidder.com  
LIC N° 01226464

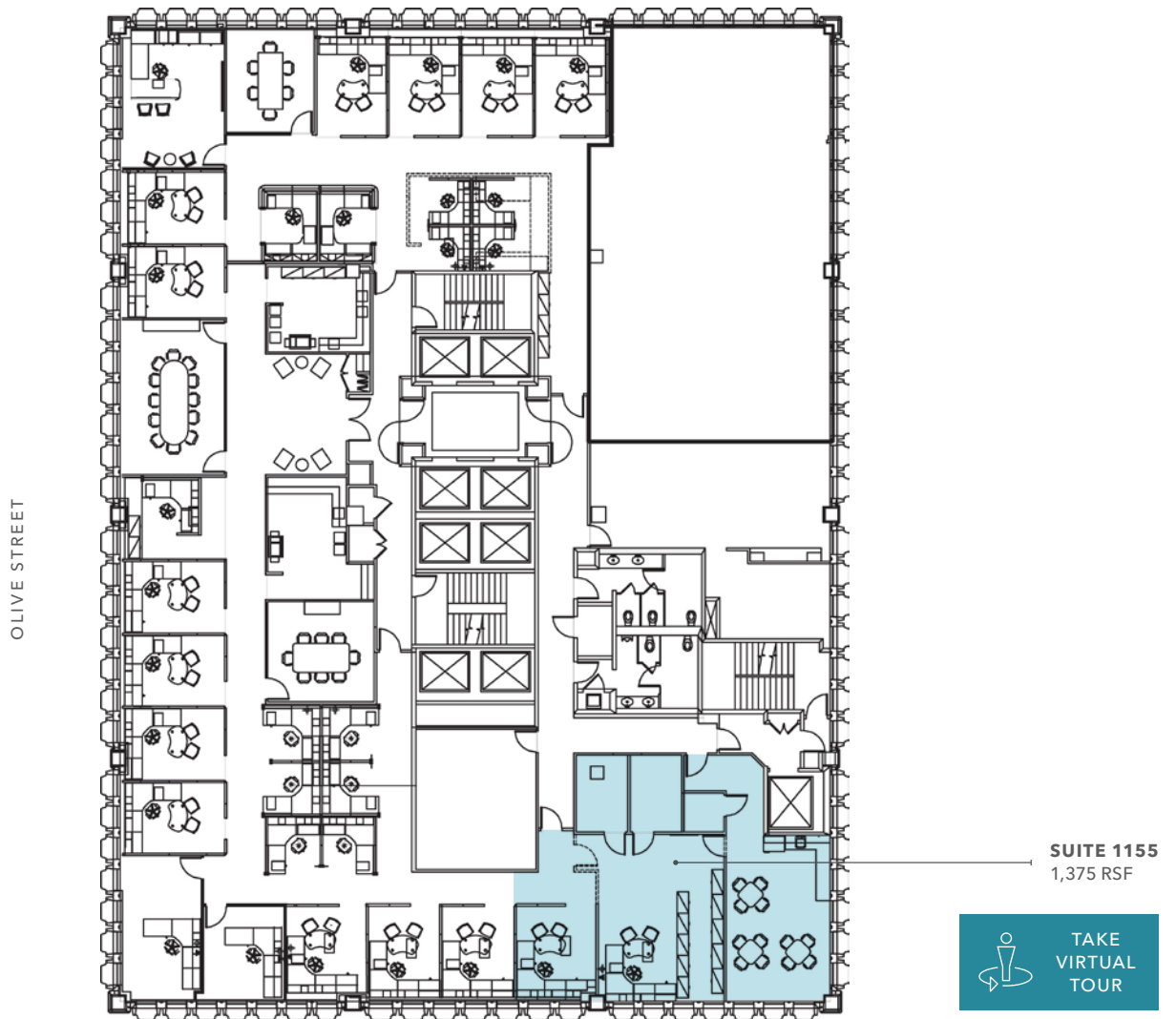
**CHRISTOPHER STECK, CCIM**  
213.225.7231  
christopher.steck@kidder.com  
LIC N° 01841338

**KIDDER.COM | ANTHONYSTECKTEAM.COM**

This information supplied herein is from sources we deem reliable. It is provided without any representation, warranty, or guarantee, expressed or implied as to its accuracy. Prospective Buyer or Tenant should conduct an independent investigation and verification of all matters deemed to be material, including, but not limited to, statements of income and expenses. Consult your attorney, accountant, or other professional advisor.

# 11TH FLOOR

6TH STREET | PERSHING SQUARE VIEWS



*For more leasing  
information contact*

**JOHN ANTHONY, SIOR**  
213.225.7218  
john.anthony@kidder.com  
LIC N° 01226464

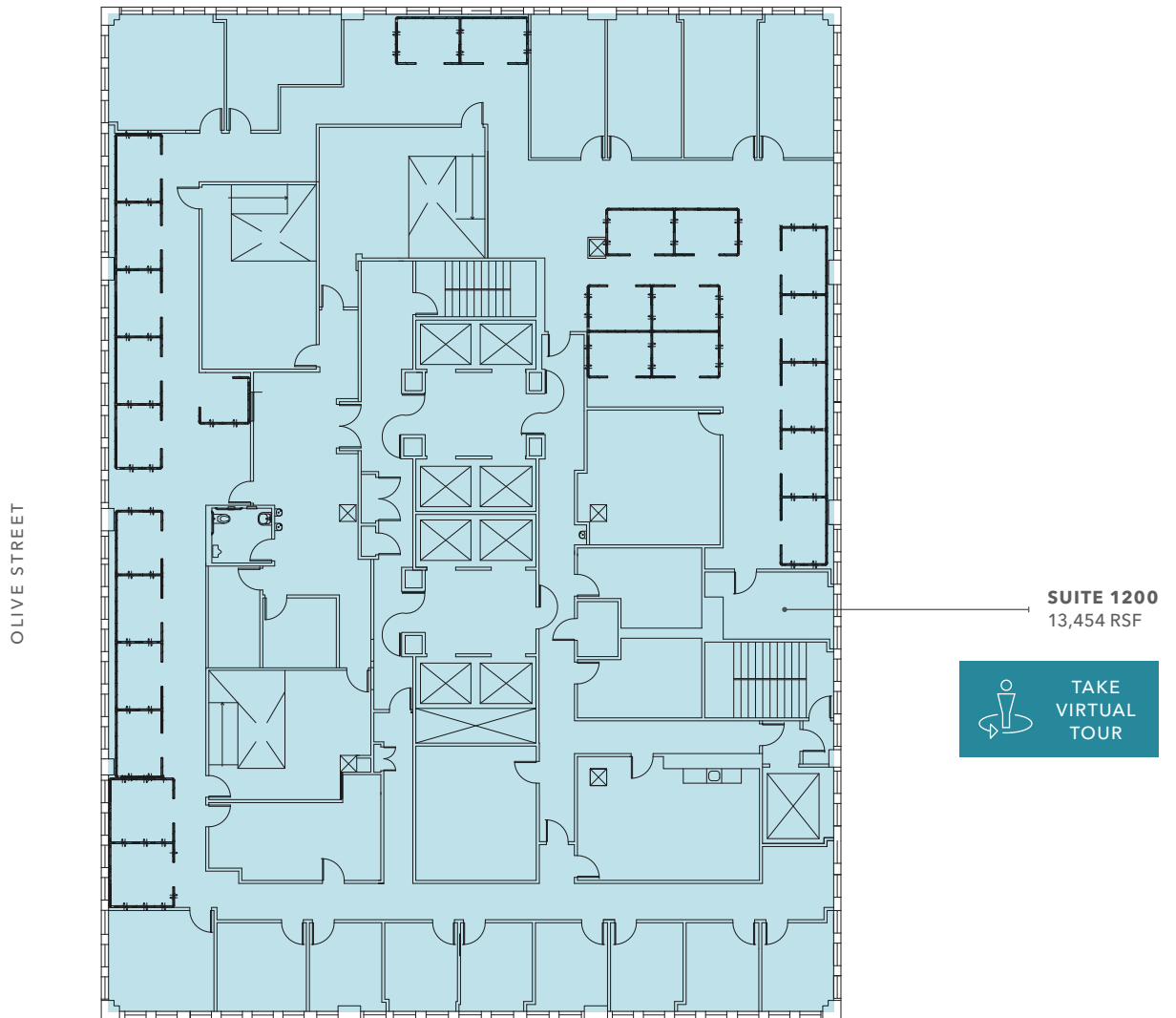
**CHRISTOPHER STECK, CCIM**  
213.225.7231  
christopher.steck@kidder.com  
LIC N° 01841338

**KIDDER.COM | ANTHONYSTECKTEAM.COM**

This information supplied herein is from sources we deem reliable. It is provided without any representation, warranty, or guarantee, expressed or implied as to its accuracy. Prospective Buyer or Tenant should conduct an independent investigation and verification of all matters deemed to be material, including, but not limited to, statements of income and expenses. Consult your attorney, accountant, or other professional advisor.

# 12TH FLOOR

6TH STREET | PERSHING SQUARE VIEWS



*For more leasing  
information contact*

**JOHN ANTHONY, SIOR**  
213.225.7218  
john.anthony@kidder.com  
LIC N° 01226464

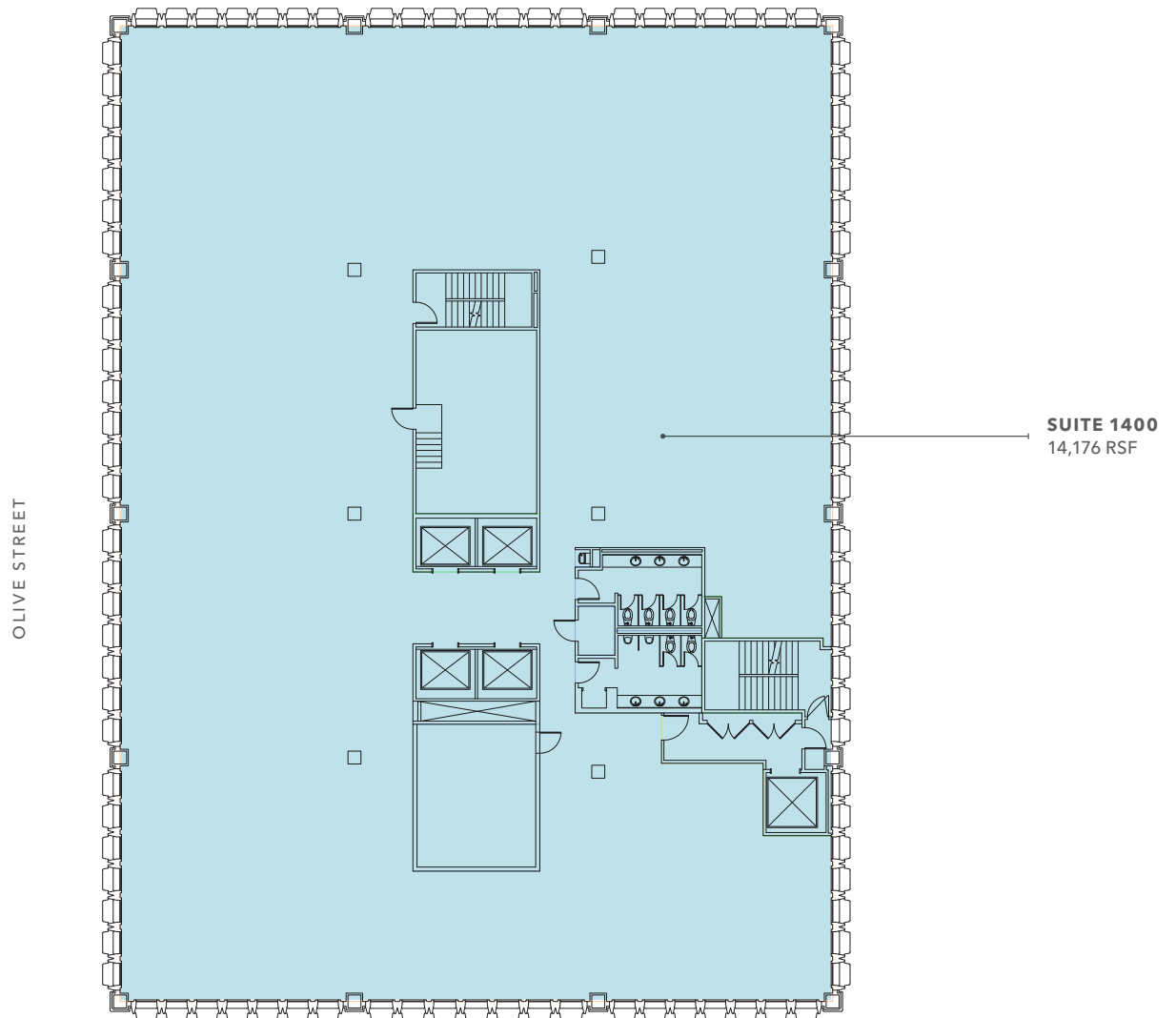
**CHRISTOPHER STECK, CCIM**  
213.225.7231  
christopher.steck@kidder.com  
LIC N° 01841338

**KIDDER.COM | ANTHONYSTECKTEAM.COM**

This information supplied herein is from sources we deem reliable. It is provided without any representation, warranty, or guarantee, expressed or implied as to its accuracy. Prospective Buyer or Tenant should conduct an independent investigation and verification of all matters deemed to be material, including, but not limited to, statements of income and expenses. Consult your attorney, accountant, or other professional advisor.

# 14TH FLOOR

6TH STREET | PERSHING SQUARE VIEWS



*For more leasing  
information contact*

**JOHN ANTHONY, SIOR**  
213.225.7218  
john.anthony@kidder.com  
LIC N° 01226464

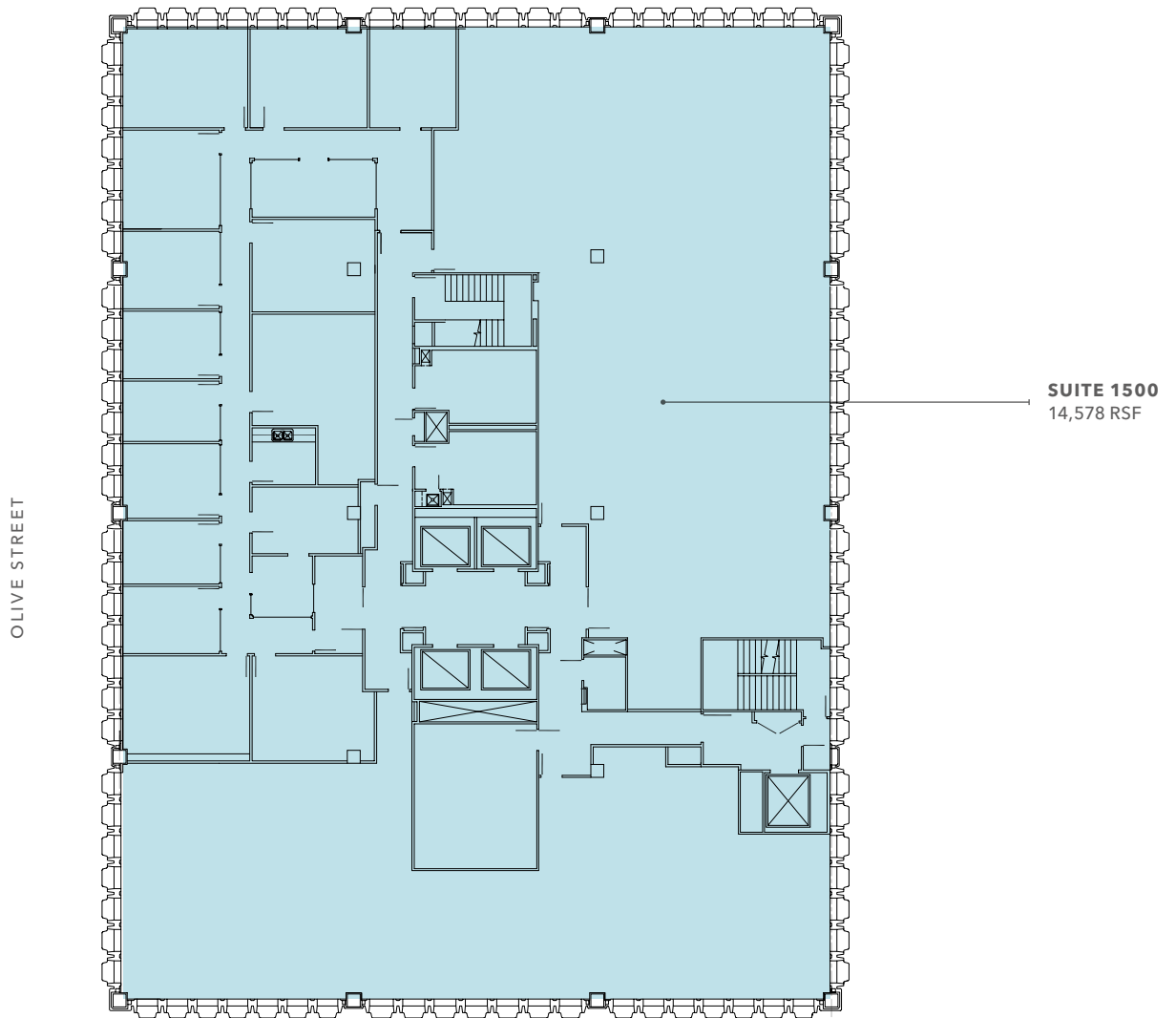
**CHRISTOPHER STECK, CCIM**  
213.225.7231  
christopher.steck@kidder.com  
LIC N° 01841338

**KIDDER.COM | ANTHONYSTECKTEAM.COM**

This information supplied herein is from sources we deem reliable. It is provided without any representation, warranty, or guarantee, expressed or implied as to its accuracy. Prospective Buyer or Tenant should conduct an independent investigation and verification of all matters deemed to be material, including, but not limited to, statements of income and expenses. Consult your attorney, accountant, or other professional advisor.

# 15TH FLOOR

6TH STREET | PERSHING SQUARE VIEWS



*For more leasing  
information contact*

**JOHN ANTHONY, SIOR**  
213.225.7218  
john.anthony@kidder.com  
LIC N° 01226464

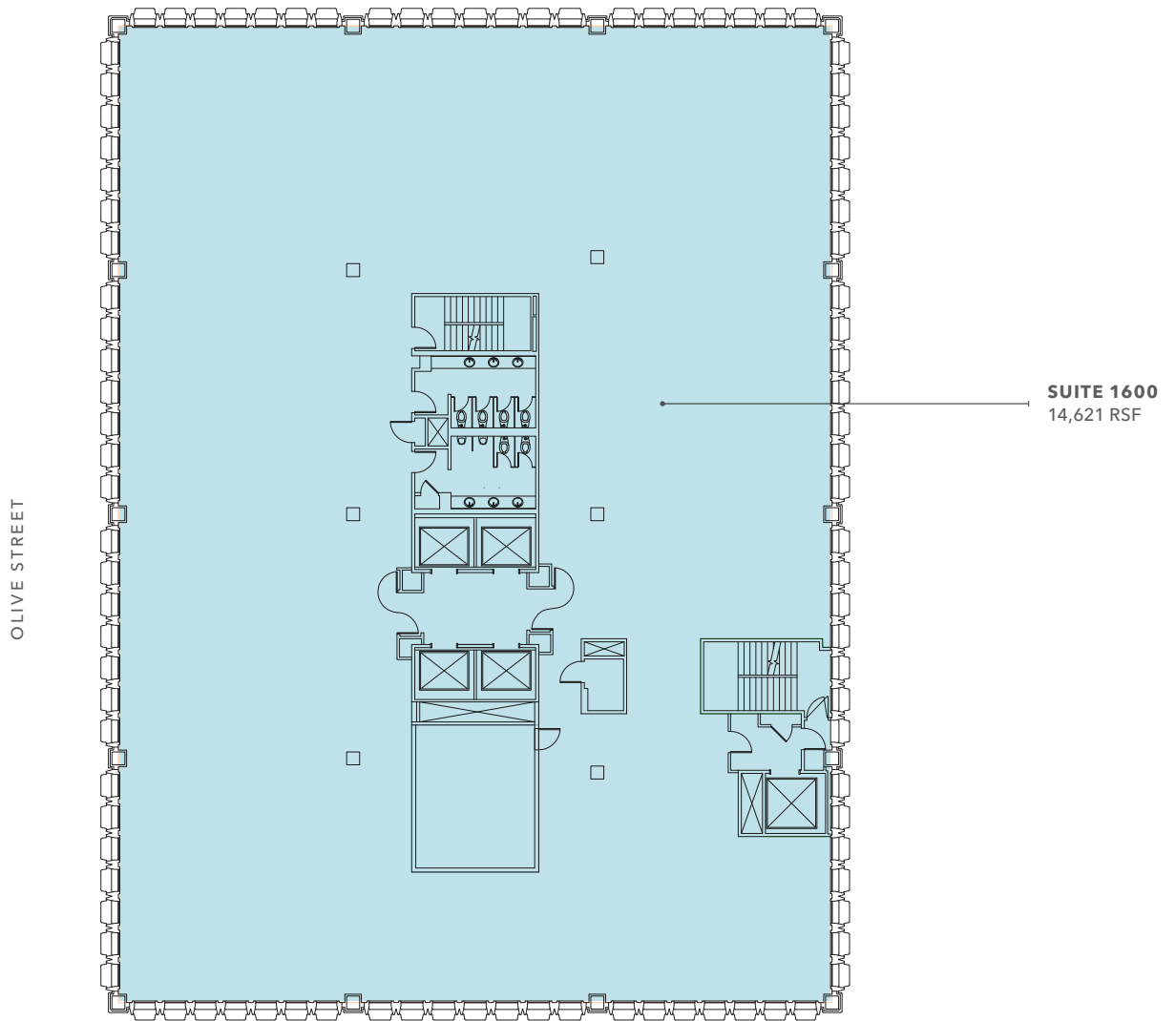
**CHRISTOPHER STECK, CCIM**  
213.225.7231  
christopher.steck@kidder.com  
LIC N° 01841338

**KIDDER.COM | ANTHONYSTECKTEAM.COM**

This information supplied herein is from sources we deem reliable. It is provided without any representation, warranty, or guarantee, expressed or implied as to its accuracy. Prospective Buyer or Tenant should conduct an independent investigation and verification of all matters deemed to be material, including, but not limited to, statements of income and expenses. Consult your attorney, accountant, or other professional advisor.

# 16TH FLOOR

6TH STREET | PERSHING SQUARE VIEWS



*For more leasing  
information contact*

**JOHN ANTHONY, SIOR**  
213.225.7218  
john.anthony@kidder.com  
LIC N° 01226464

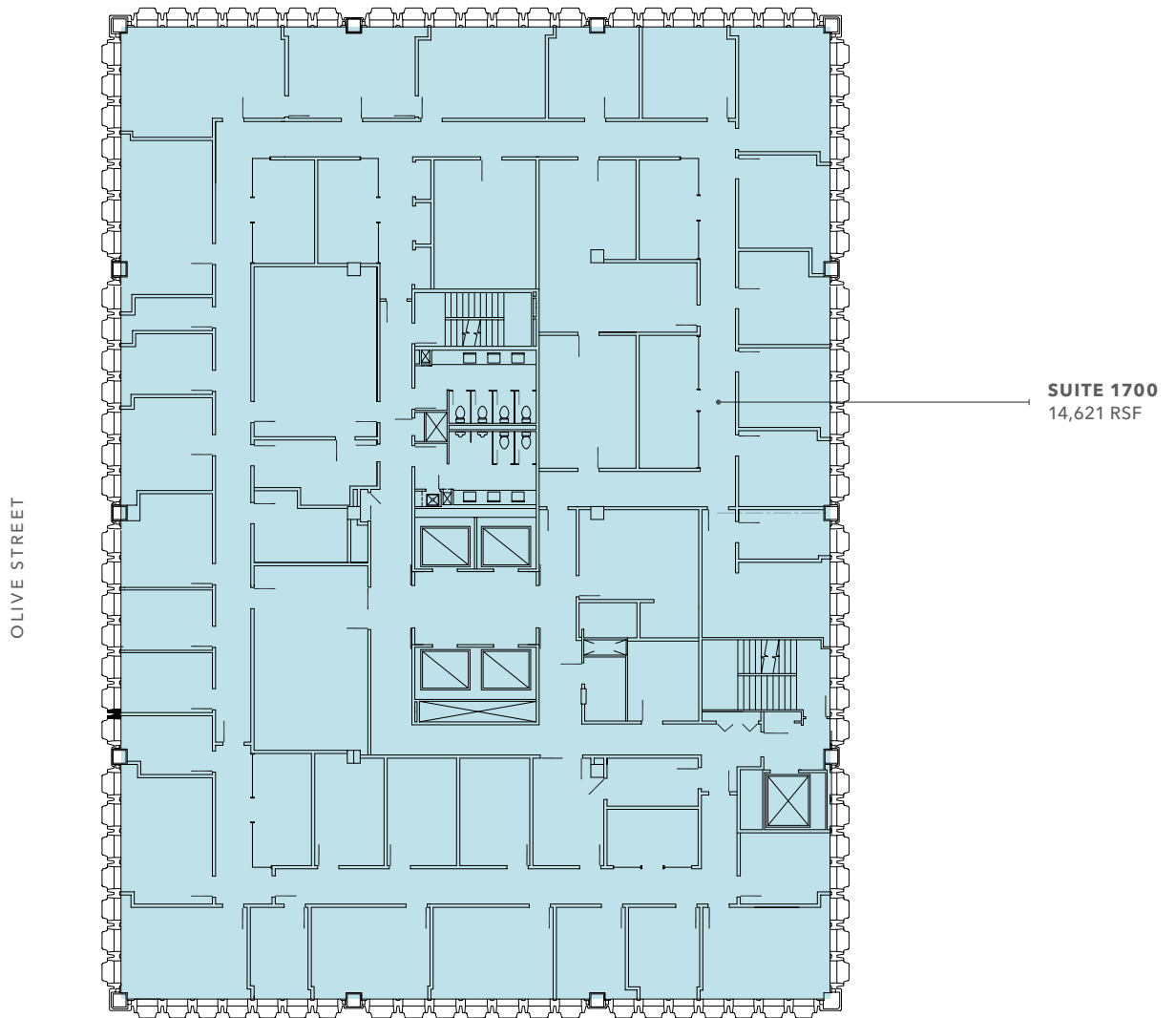
**CHRISTOPHER STECK, CCIM**  
213.225.7231  
christopher.steck@kidder.com  
LIC N° 01841338

**KIDDER.COM | ANTHONYSTECKTEAM.COM**

This information supplied herein is from sources we deem reliable. It is provided without any representation, warranty, or guarantee, expressed or implied as to its accuracy. Prospective Buyer or Tenant should conduct an independent investigation and verification of all matters deemed to be material, including, but not limited to, statements of income and expenses. Consult your attorney, accountant, or other professional advisor.

# 17TH FLOOR

6TH STREET | PERSHING SQUARE VIEWS



*For more leasing  
information contact*

**JOHN ANTHONY, SIOR**  
213.225.7218  
john.anthony@kidder.com  
LIC N° 01226464

**CHRISTOPHER STECK, CCIM**  
213.225.7231  
christopher.steck@kidder.com  
LIC N° 01841338

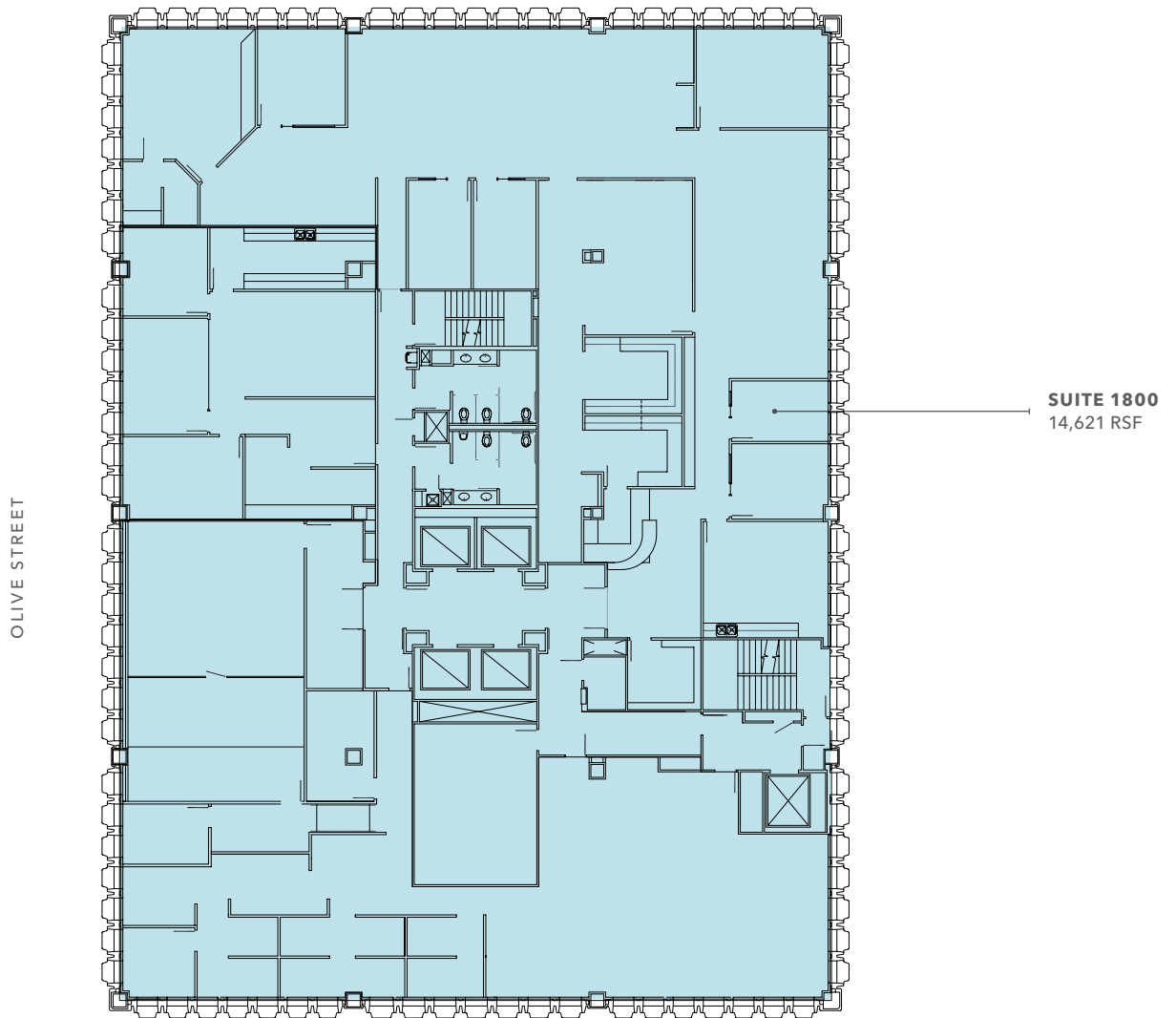
**KIDDER.COM | ANTHONYSTECKTEAM.COM**

This information supplied herein is from sources we deem reliable. It is provided without any representation, warranty, or guarantee, expressed or implied as to its accuracy. Prospective Buyer or Tenant should conduct an independent investigation and verification of all matters deemed to be material, including, but not limited to, statements of income and expenses. Consult your attorney, accountant, or other professional advisor.



# 18TH FLOOR

6TH STREET | PERSHING SQUARE VIEWS



*For more leasing  
information contact*

**JOHN ANTHONY, SIOR**  
213.225.7218  
john.anthony@kidder.com  
LIC N° 01226464

**CHRISTOPHER STECK, CCIM**  
213.225.7231  
christopher.steck@kidder.com  
LIC N° 01841338

**KIDDER.COM | ANTHONYSTECKTEAM.COM**

This information supplied herein is from sources we deem reliable. It is provided without any representation, warranty, or guarantee, expressed or implied as to its accuracy. Prospective Buyer or Tenant should conduct an independent investigation and verification of all matters deemed to be material, including, but not limited to, statements of income and expenses. Consult your attorney, accountant, or other professional advisor.



# 19TH FLOOR

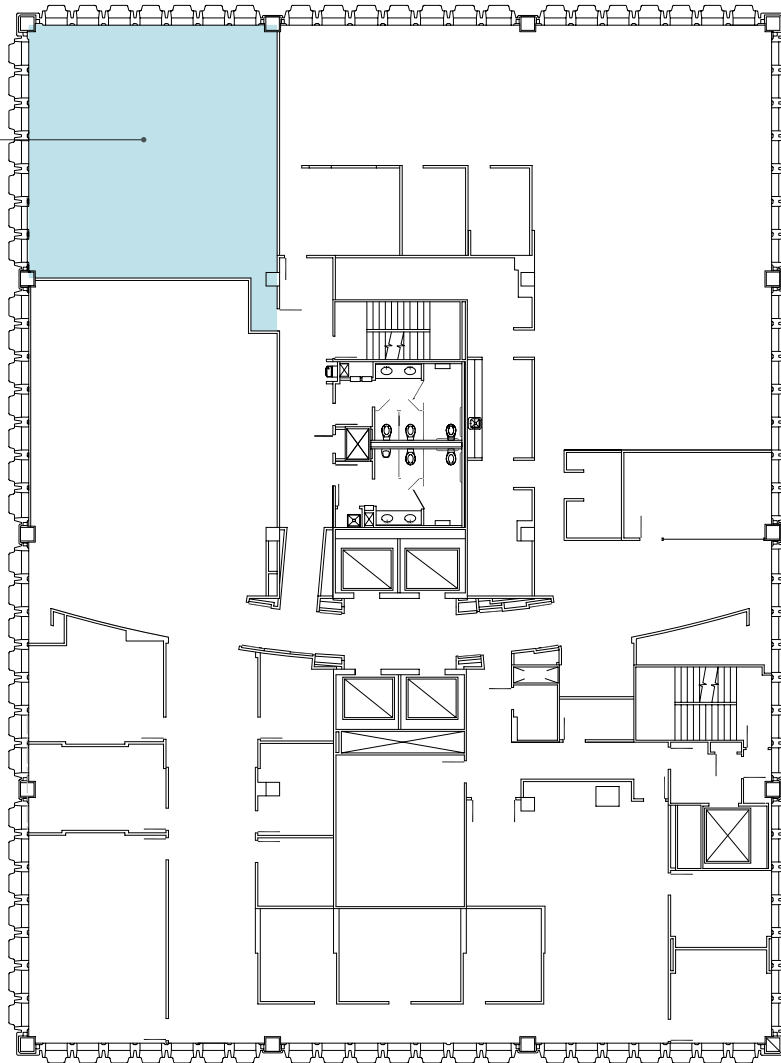
6TH STREET | PERSHING SQUARE VIEWS

SUITE 1940  
1,648 RSF



TAKE  
VIRTUAL  
TOUR

OLIVE STREET



*For more leasing  
information contact*

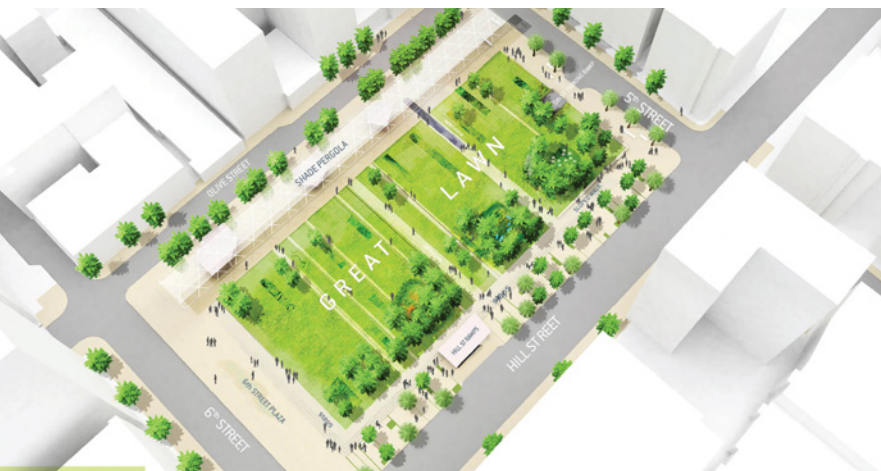
**JOHN ANTHONY, SIOR**  
213.225.7218  
john.anthony@kidder.com  
LIC N° 01226464

**CHRISTOPHER STECK, CCIM**  
213.225.7231  
christopher.steck@kidder.com  
LIC N° 01841338

**KIDDER.COM | ANTHONYSTECKTEAM.COM**

This information supplied herein is from sources we deem reliable. It is provided without any representation, warranty, or guarantee, expressed or implied as to its accuracy. Prospective Buyer or Tenant should conduct an independent investigation and verification of all matters deemed to be material, including, but not limited to, statements of income and expenses. Consult your attorney, accountant, or other professional advisor.





## THE RENEWAL OF PERSHING SQUARE

Due to the revitalization of several of its neighborhoods, Downtown Los Angeles thrives with a vibrancy never seen in its history. Areas like the Old Bank District and the Historic Core were once filled with vacant buildings; now they're teeming with brand-new apartment buildings, high-end retail shops and restaurants. As a result, businesses are relocating downtown. Population has increased 150% since 2000, and continues to grow at a rapid pace. New downtown destinations like the BLOC, Grand Central Market and FIGat7th draw tourists and locals alike, both day and night.

Pershing Square Park is the heart of Downtown LA. It's also one of the few remaining areas to not receive a facelift. That's about to change. Earlier this year, an international design-team led by the Paris-based Agence Ter were selected to redesign the five-acre park using what they call a "radical flatness" to open up the space, connecting one part of the city to another, offering visitors both entertainment with concert events and relaxation with its great lawn and reflecting pool. Think of it as Central Park on the West Coast.

Other popular venues nearby include Staples Center, Dodger Stadium, Expo Park/USC, The Music Center, and Microsoft Theater.

## 5-MILE DEMOGRAPHICS



ESTIMATED  
POPULATION  
67,396



AVERAGE  
HH INCOME  
\$35,025



DAYTIME  
EMPLOYMENT  
190,200

*For more leasing  
information contact*

**JOHN ANTHONY, SIOR**  
213.225.7218  
john.anthony@kidder.com  
LIC N° 01226464

**CHRISTOPHER STECK, CCIM**  
213.225.7231  
christopher.steck@kidder.com  
LIC N° 01841338

**KIDDER.COM | ANTHONYSTECKTEAM.COM**

This information supplied herein is from sources we deem reliable. It is provided without any representation, warranty, or guarantee, expressed or implied as to its accuracy. Prospective Buyer or Tenant should conduct an independent investigation and verification of all matters deemed to be material, including, but not limited to, statements of income and expenses. Consult your attorney, accountant, or other professional advisor.

