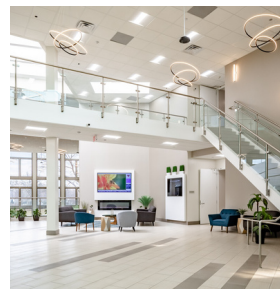




387 Shuman Blvd
Naperville, IL 60563

Get your exclusive look at this distinctive
DynaCom property today!

leasing@dynacomcenter.com
630-355-2000



IMED CAMPUS NORTH

BUILDING HIGHLIGHTS

Central location is just half an hour from
Chicago with direct access to I-88

Patient pick up and drop off area in the
front of the building

Highly accessible: within a 15-minute
drive of the top 5 Major Hospitals

Fast and easy leasing process

BUILDING RENOVATIONS

Complete New Site design to
accommodate medical use parking

Modern Lobby and Atrium with LED
lighting throughout entire building

Completely renovated common area restrooms

HVAC system has been completely
replaced to provide fully programable and
efficient system to every Tenant

The building's electrical and plumbing
infrastructure have been replaced in it's
entirety to be able to easily meet any
provider's requirements



CONTACT MARI AT (630) 484-5995 OR
VISIT WWW.DYNACOMCENTER.COM
FOR MORE INFORMATION