

# **Rare Opportunity Office Space Available Immediately!**

## **in the MetroWest Design Center of Ashland, MA**

**For Lease by Owner**



### **Office Spaces Available!**

Professional feel without the hassle of fighting city traffic.

Offers an excellent opportunity for small businesses seeking top-notch office space with affordable rates in the MetroWest market. Available space is optimal for business professionals, accountants, real estate brokers, chiropractors, bookkeepers, financial planners, etc. Just 40 minutes to Boston.

- ✓ First class amenities
- ✓ Perfect for small teams or individual workstations
- ✓ Shared kitchenette
- ✓ Wired for internet
- ✓ On-site parking
- ✓ Located in the heart of the MetroWest corridor, minutes from route 495, 9, & 90
- ✓ Ideal central location between Boston and Worcester
- ✓ Walking distance to MBTA commuter rail and downtown Ashland restaurants
- ✓ Owner-occupied facility
- ✓ 10 ft + ceilings
- ✓ Fully air conditioned & gas heat included

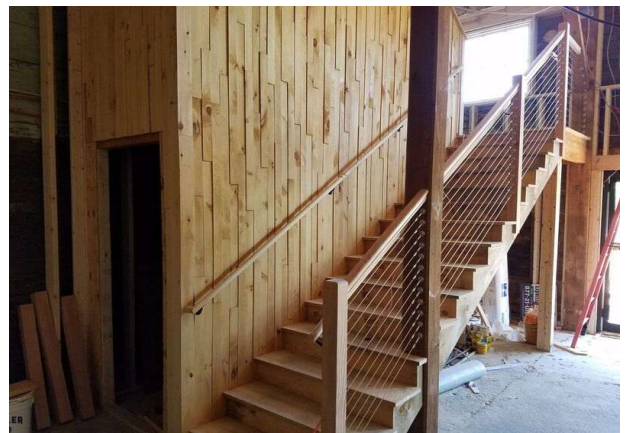
### **Leasing Contact:**

Julia Jameson

774-277-1897

Sixty Pleasant Realty, LLC

[jjameson@UnitedHomeExperts.com](mailto:jjameson@UnitedHomeExperts.com)

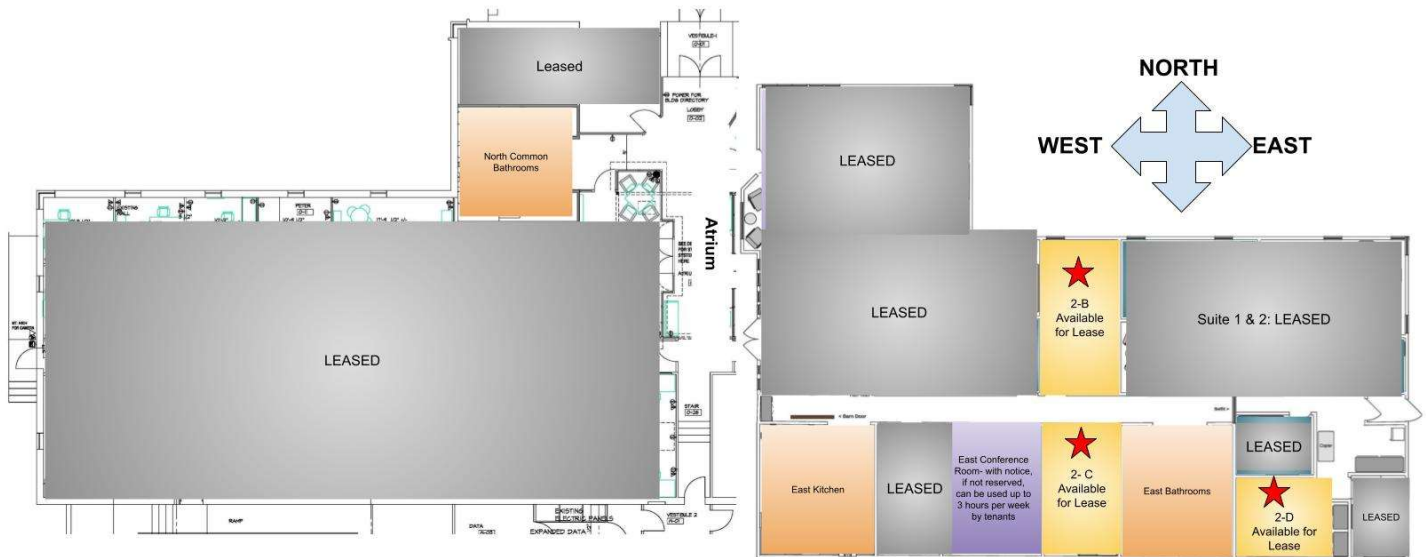


# Available Immediately

- 4 Individual Office(s) in shared area

## Front of Building

- 2-B 11' x 21' = 231 square feet
- 2-C 12' x 18' = 216 sf
- 2-D 11' x 14' = 154 sf



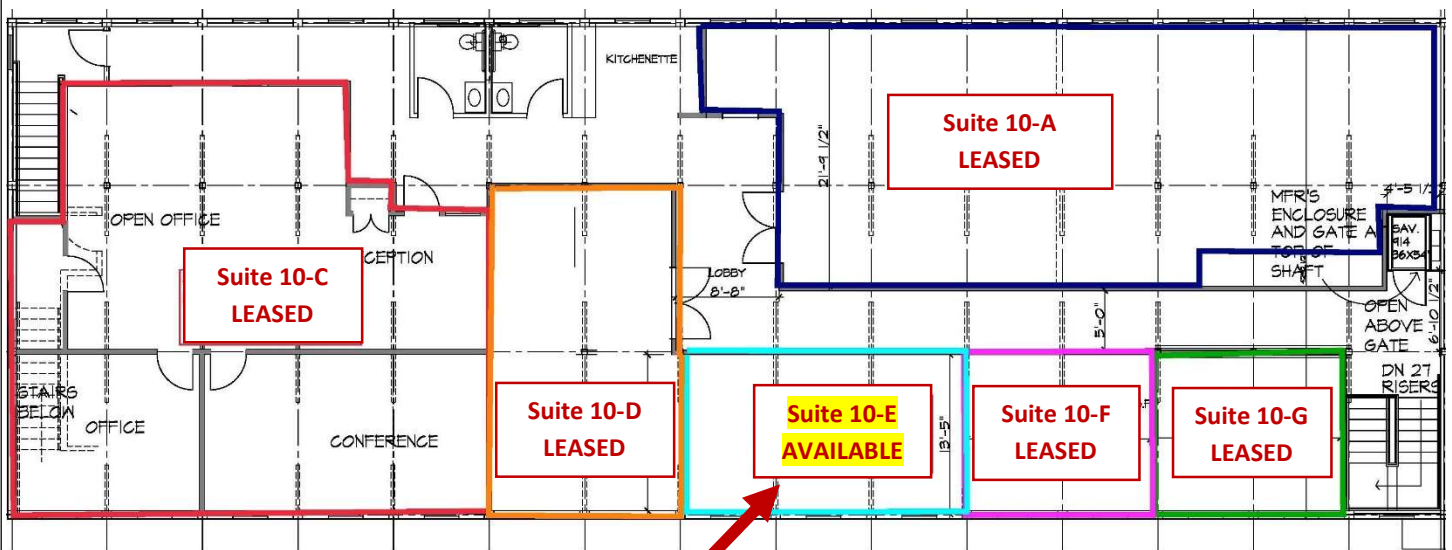
2-B 11' x 21' = 231 square feet  
2-C 12' x 18' = 216 sf  
2-D 11' x 14' = 154 sf

## Individual Office – Approximately 200 Sq Ft



## “The Mill”

- 10-E  $13\frac{1}{2}' \times 23\frac{1}{2}' = 315$  square feet



SECOND FLOOR PLAN





Rental Rate:	TBD- based on use and load, just inquire!
Space Type:	Office, Executive Suite, Design
Property Sub-type:	Office Building
Lease Type:	Modified Gross (includes heat, a/c, electricity, etc.)
Date Available:	Immediately
Lease Term:	Flexible terms: 3, 6, or 12month terms are standard could consider longer
Parking:	Ample surface parking

**Location Description:** ½ mile walk to MBTA commuter rail. Minutes to Route 9, 495, and Mass Pike. Surrounding towns: Framingham, Southborough, Hopkinton, Natick and Holliston



Pictures of Existing Rented Offices:







Additional Property Photos:

