



M E R I D I A N

147 S. CHERRY STREET, SUITE 200 | WINSTON-SALEM, NC 27101 | P 336.722.1986 | F 336.723.3173 | MERIDIANREALTY.COM

894± SF - 2,494± RSF

# Stratford Executive Park

1100 S. Stratford Rd, Winston-Salem, NC 27103



Stratford Executive Park is a three building 65,000 sf multi-tenant office complex. Located at the confluence of S. Stratford Rd., Silas Creek Pkwy, and Salem Pkwy, and surrounded by professional and medical offices. Close proximity to Hanes Mall, Forsyth Memorial Hospital, established neighborhoods, and virtually all major retailers and restaurants.

For more information:

**John L. Ruffin, CCIM**

Jruffin@meridianrealty.com

336.480.2081

**FOR LEASE: \$22.00 - \$18.00 PSF Gross**

**Spencer T. Bennett, CCIM**

Spencer@meridianrealty.com

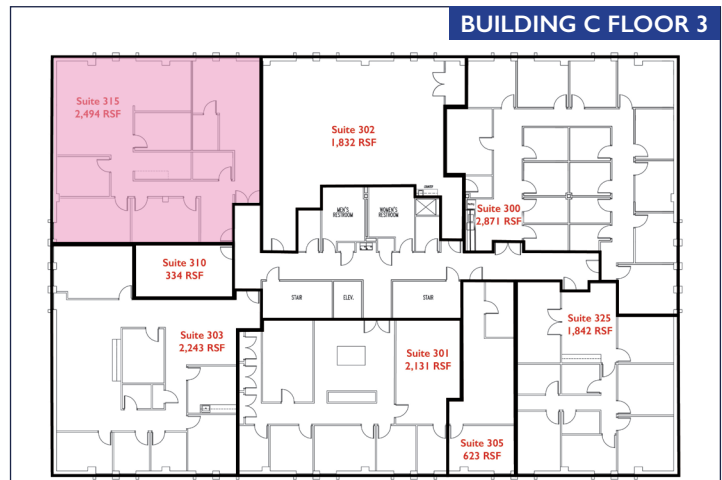
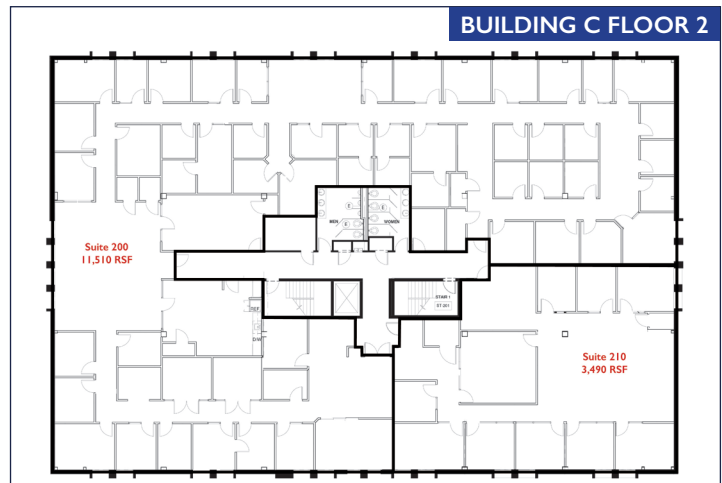
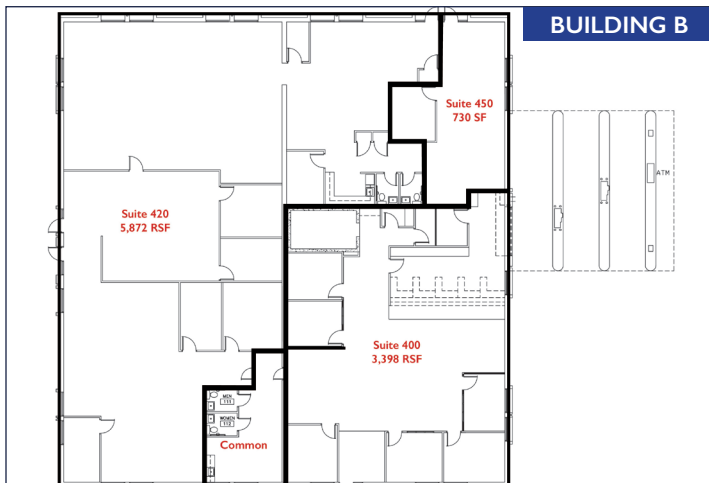
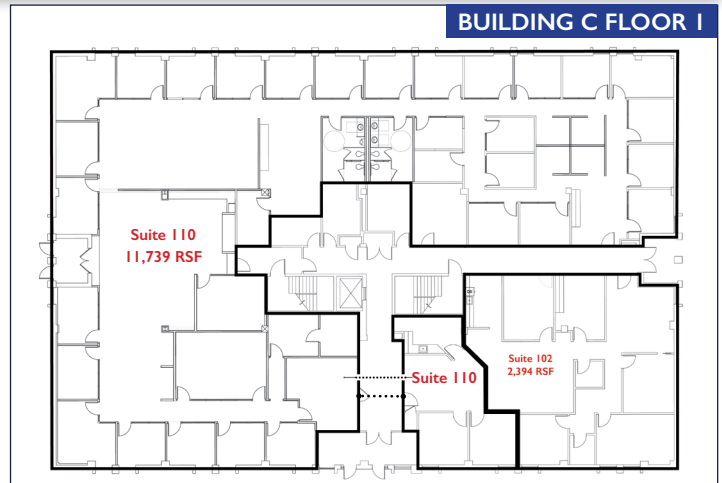
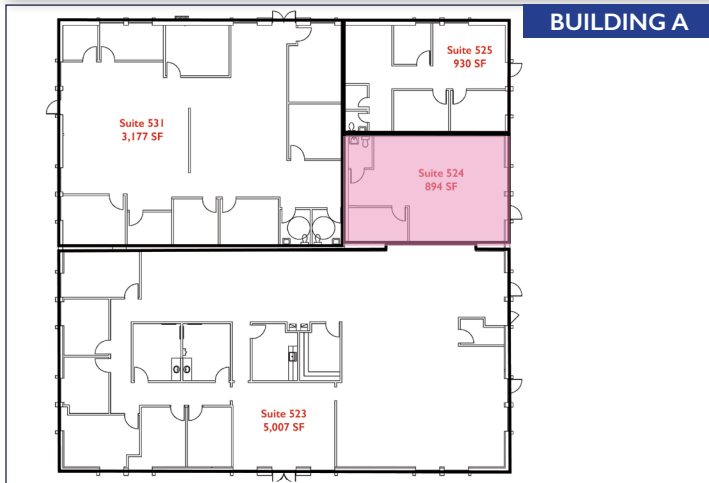
336.480.2327

WWW.MERIDIANREALTY.COM

# Stratford Executive Park | 1100 S. Stratford Rd, Winston-Salem, NC 27103

- Zoned GO for office and medical use
- Easy access to Silas Creek Parkway and Salem Parkway
- Close to banks, restaurants, hotels, and Forsyth Hospital
- Efficient floor plans
- Full service lease
- Prime office location

## FLOOR PLANS

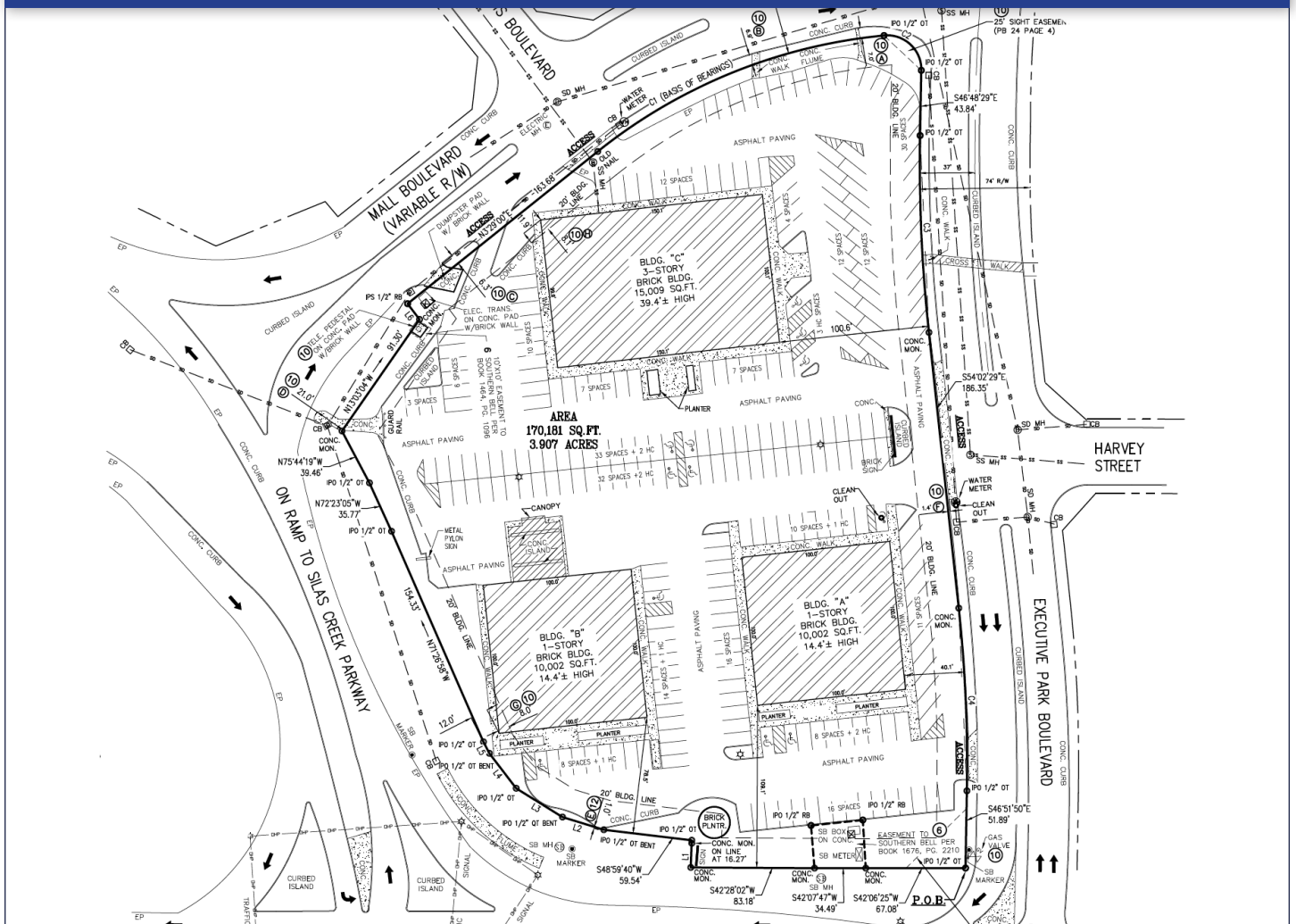




BUILDING C



SURVEY





AERIAL



No warranty or representation (express or implied) is made as to the accuracy or completeness of the information set forth herein. All information is submitted subject to errors, omissions, change of price, prior lease or sale, and withdrawal without notice. All marketing material produced by the Meridian Realty Group is proprietary. Any reproduction is expressly prohibited.



THE MERIDIAN REALTY GROUP | 147 S. CHERRY STREET, SUITE 200 | WINSTON-SALEM, NC 27101

P 336.722.1986 | F 336.723.3173

WWW.MERIDIANREALTY.COM