



Ground Lease

Property Overview

- 1 AC Available
- Anchored by Sam's Club
- Excellent visibility to C-470
- Ample parking
- Ground lease only

Demographics

	1 Mi	3 Mi	5 Mi
2020 Est. Pop	13,204	104,859	217,417
2020 Households	5,470	42,364	85,931
2020 Daytime Pop	6,694	98,946	206,111
2020 Average Household Income	\$141,179	\$159,960	\$163,586

Lone Tree Pad 7817 Park Meadows Dr. Lone Tree, CO

Adam Rubenstein

303-257-1481

Adam.Rubenstein@am.jll.com

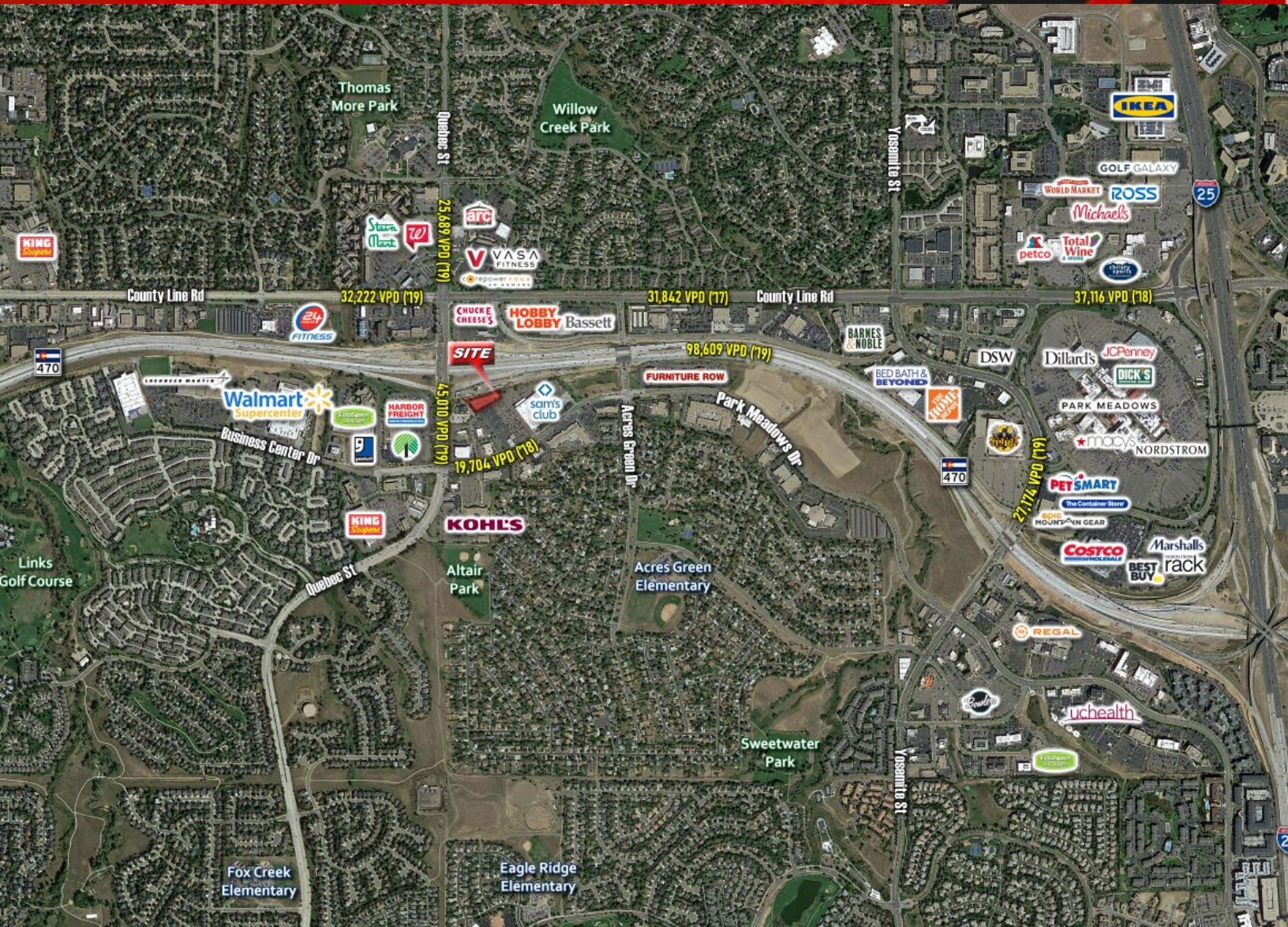
Sarah Alfano

303-263-5362

Sarah.Alfano@am.jll.com

Jones Lang LaSalle Brokerage, Inc.
1225 17th St. Suite. #1900
Denver, CO 80202
www.jll.com





Adam Rubenstein
303-257-1481
Adam.Rubenstein@am.jll.com

Sarah Alfano
303-263-5362
Sarah.Alfano@am.jll.com

Jones Lang LaSalle Brokerage, Inc.
1225 17th St., Suite #1900
Denver, CO 80202
www.jll.com