



GREENWICH
OFFICE PARK

BUILDING 3



RECENTLY BUILT AND FULLY FURNISHED "TURNKEY" OFFICE SUITE FOR SUBLEASE

NEWMARK



BEAUTIFUL OFFICE SETTING LOCATED IN A PRISTINE CORPORATE CAMPUS

CORPORATE OFFICE PARK WITH ACCESS TO INCREDIBLE AMENITIES

AVAILABILITY 1ST FLOOR 3,872 RSF
TERM..... SUBLEASE TO 3/31/29
RENT UPON REQUEST
POSSESSION..... IMMEDIATE

- 2 conference rooms, 2 partner offices, 5 small offices, 4 admin stations in a large open area
- 2 private bathrooms, reception area, open pantry, copy/production area
- 12 parking spaces, with 4 reserved spaces (ample additional parking available in the Park)
- Park setting with easy access to outdoor seating areas
- Renovated contemporary building lobby with a prominent double-door entry to the suite directly off of the lobby

 [CLICK HERE FOR TOUR](#)

FOR LEASING INFORMATION, PLEASE CONTACT

Allan Murphy | 203-912-1650 | allan.murphy@nmrk.com



INTERIOR PHOTOS



Lobby Entrance



Front Desk



Conference Room

FOR LEASING INFORMATION, PLEASE CONTACT

Allan Murphy | 203-912-1650 | allan.murphy@nmrk.com

INTERIOR PHOTOS



Workstations



Copy Room



Kitchenette

FOR LEASING INFORMATION, PLEASE CONTACT

Allan Murphy | 203-912-1650 | allan.murphy@nmrk.com

FLOOR PLAN

3,872 RSF

BUILDING 3: FIRST FLOOR

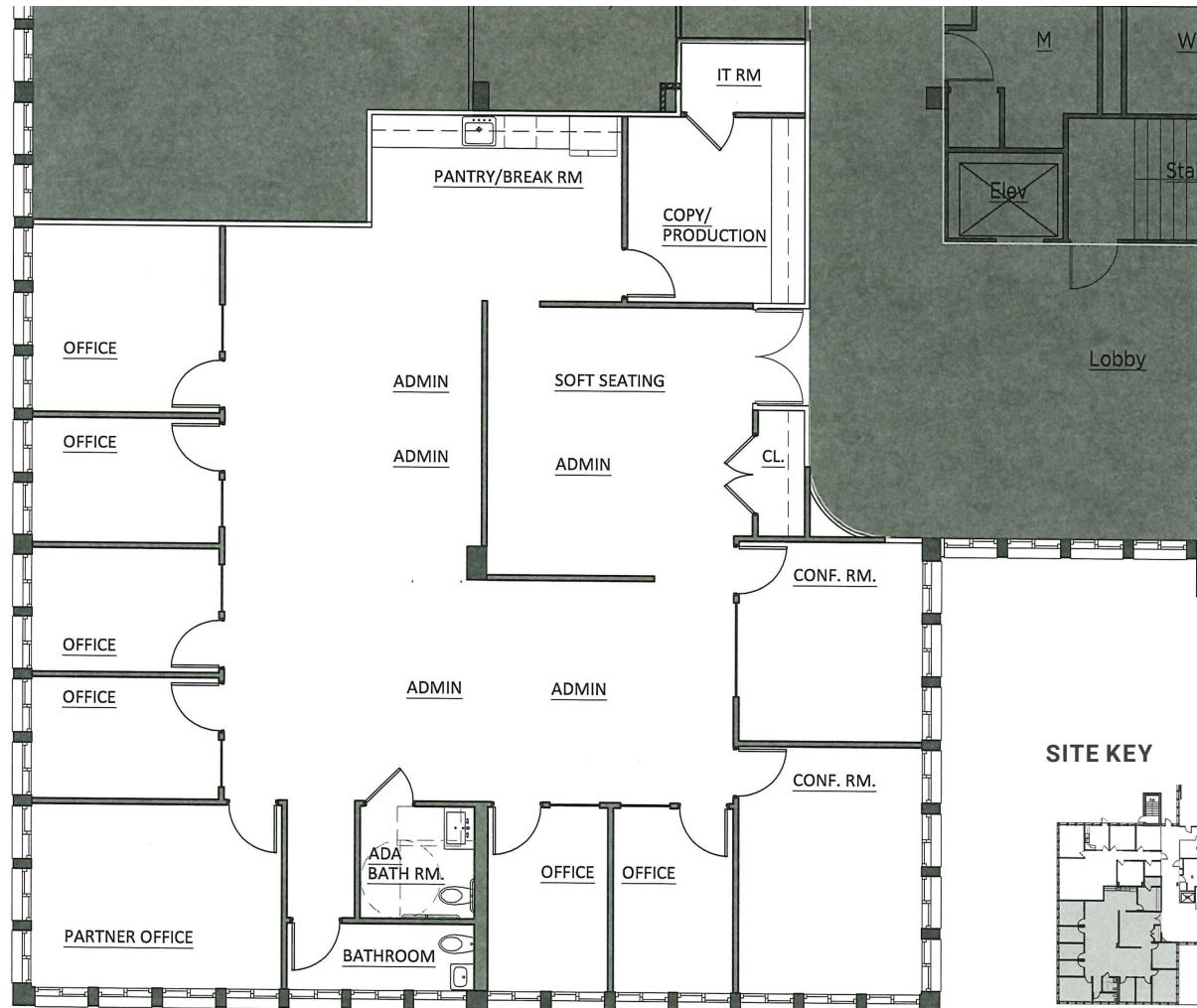
**FOR LEASING INFORMATION,
PLEASE CONTACT**

Allan Murphy

203-912-1650

allan.murphy@nmrk.com

The information contained herein has been obtained from sources deemed reliable but has not been verified and no guarantee, warranty or representation, either express or implied, is made with respect to such information. Terms of sale or lease and availability are subject to change or withdrawal without notice.



SITE PLAN



AMENITIES

LOCATED AT BUILDING 5

- Full service café with terrace seating serving breakfast and lunch
- On-premise catering for business lunches and events
- Shuttle service to the Train Station
- Fitness Center featuring cardio, nautilus and free weight equipment
- Complimentary door-to-train shuttle service during peak hours
- Tenant conference facility
- Complimentary on-site parking
- Bicycle rack and adjacent shower facility
- On-site car wash and detailing
- On-site dry cleaning
- On-site shoe repair
- Complimentary on-site notary services
- On-site FedEx and UPS drop boxes