

For lease

Three office suites available



Property Overview

- Located in East Windsor, with easy access to I-95 and the NJ Turnpike
- Flexible layout options
- Modernized style and natural light
- Available furnished or unfurnished
- 10 minute drive to Princeton Junction train station (Amtrak/NJ Transit) with direct lines to NYC

Popular Destinations

- East Windsor Village shopping
- Panera and Playa Bowls
- Starbucks and Dunkin’
- City Streets Bar & Grill

Location

104 Windsor Center Drive
East Windsor, NJ 08520

Size

Suite 400B:

8,537 sf

Suite 500 & 600:

1,351 - 8,192 sf

Use

Office

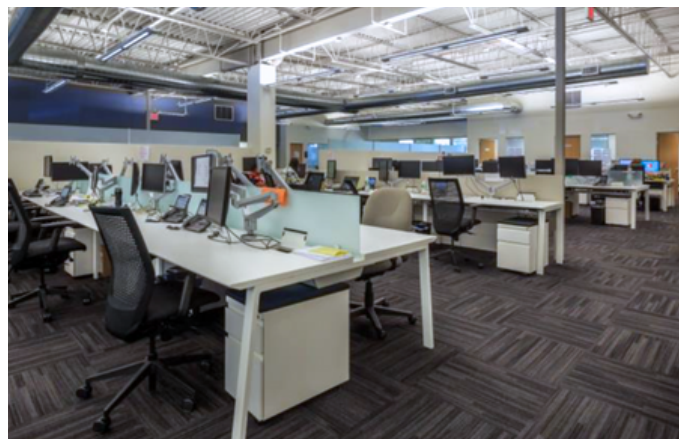
JLL

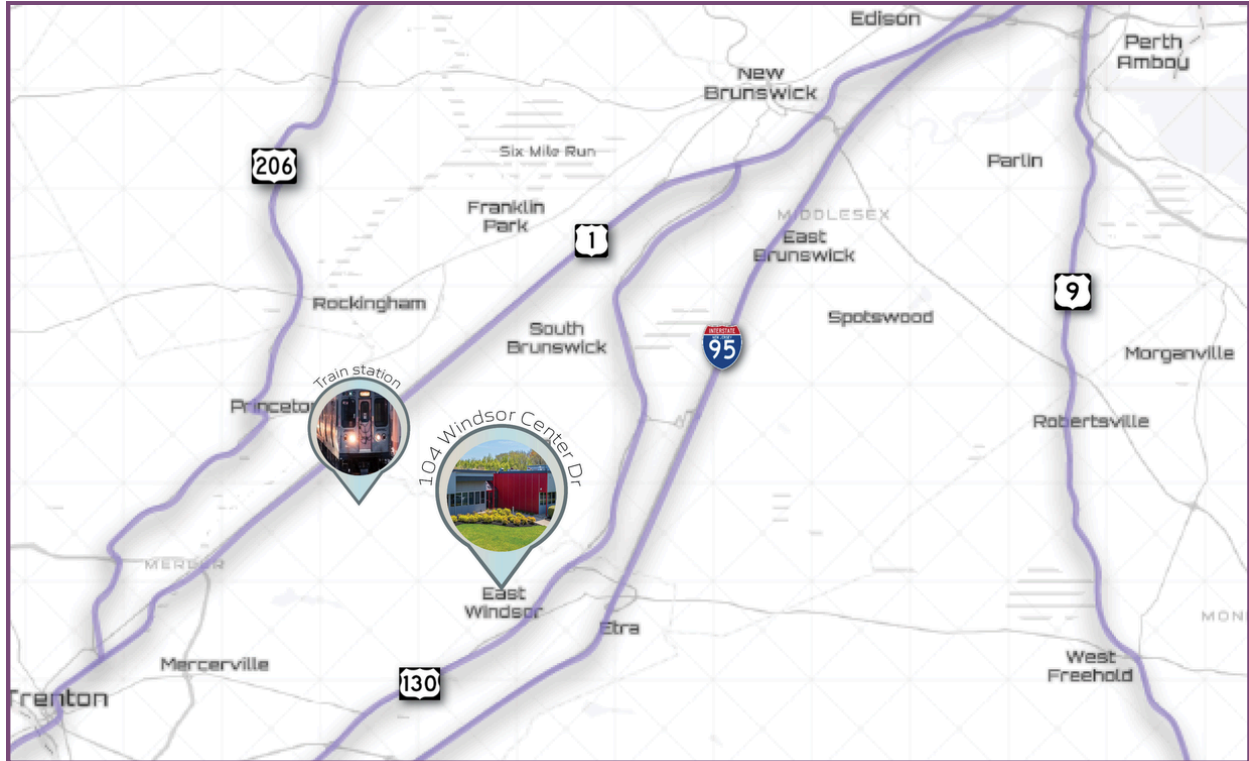
Vinny DiMeglio

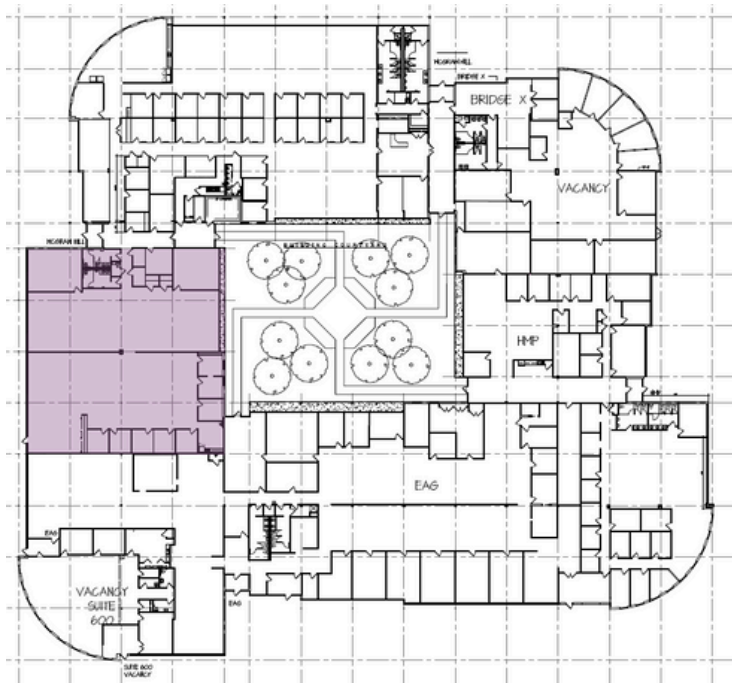
+1 609 439 8926

vinny.dimeglio@jll.com

Jones Lang LaSalle Brokerage, Inc.

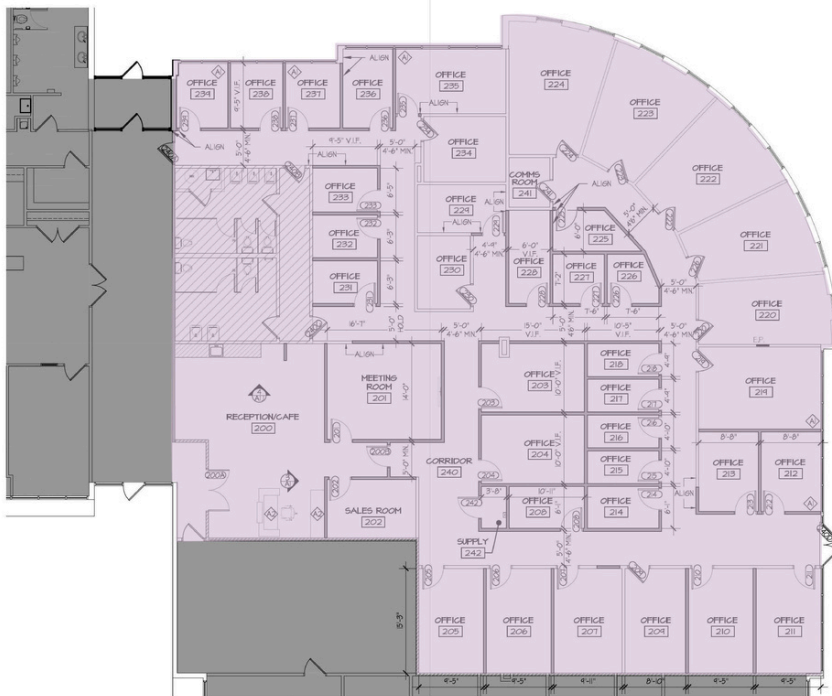






Suite 400B

8,537 sf



Suite 500 & 600

1,351 - 8,192 sf