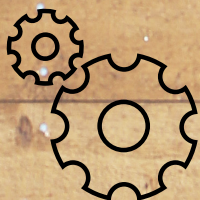


FIVE FIVE
FIVE FIVE
PARK CENTER





High Image Building in the Heart of Santa Ana



Recent Complete Renovation



Minutes to Downtown Santa Ana Civic Center, MainPlace Mall and John Wayne Airport



Free Surface Parking and Street Parking Available



**New Spec Suites
Immediate Occupancy,
Fiber Ready**



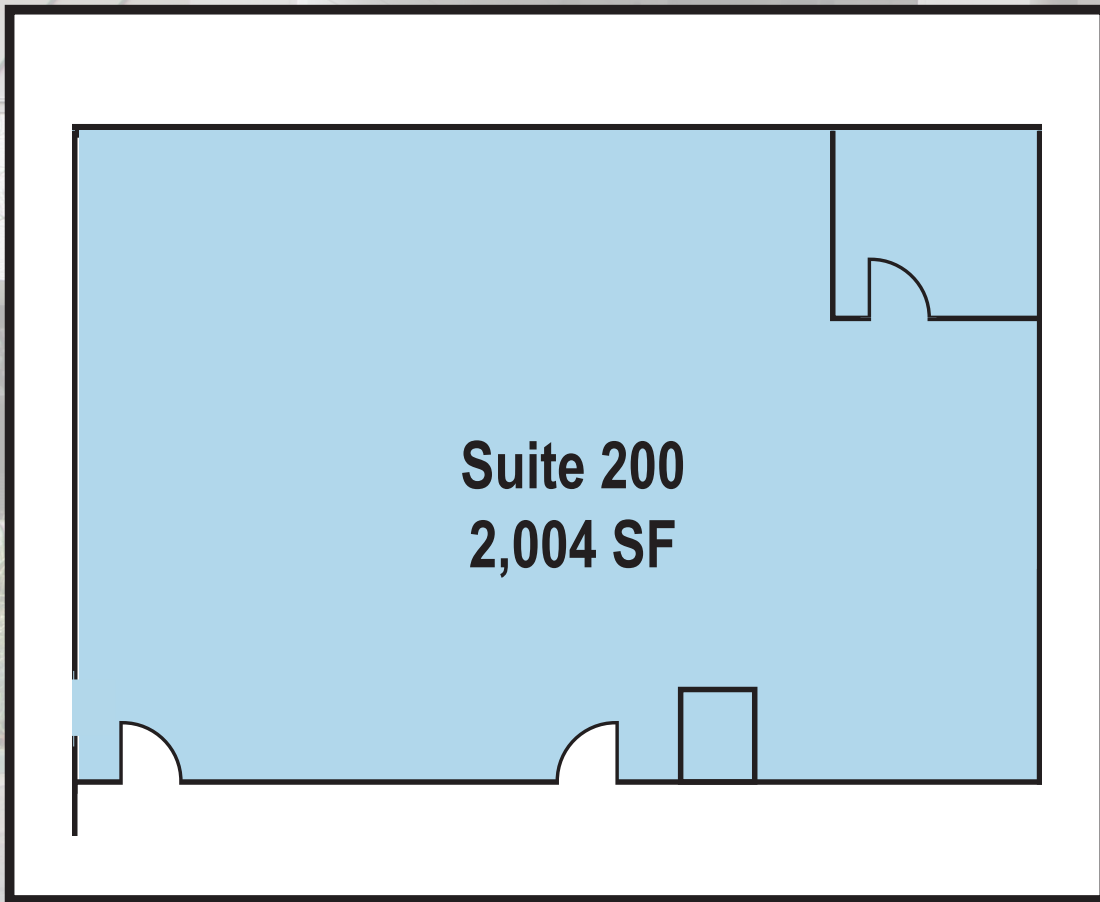
Immediate Access to the 55, 5, 22, & 405 Freeways



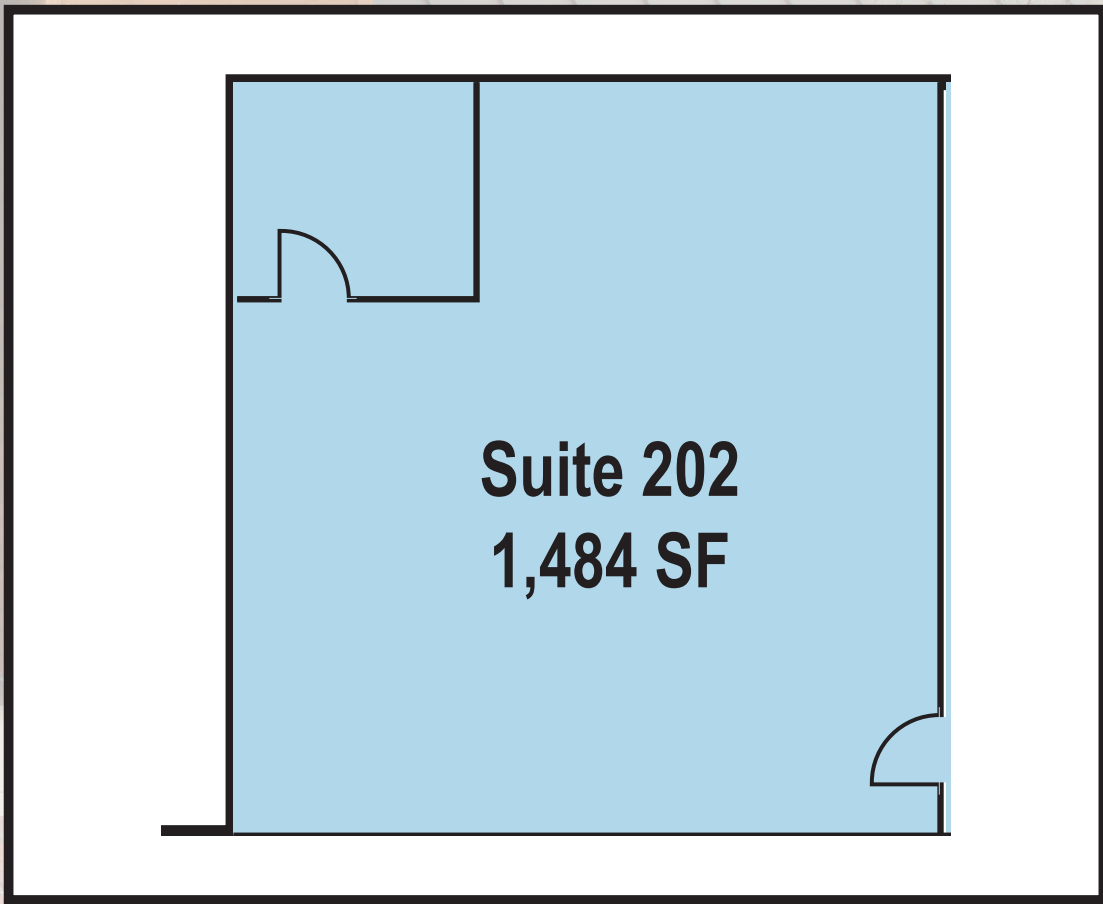
FIVE
FIVE FIVE
FIVE
PARK CENTER

Second Floor Plan

Rentable SF	Suite	Description	Rate
2,004 SF	200	1 Private Office, Open Area and Closet	\$1.85 FSG

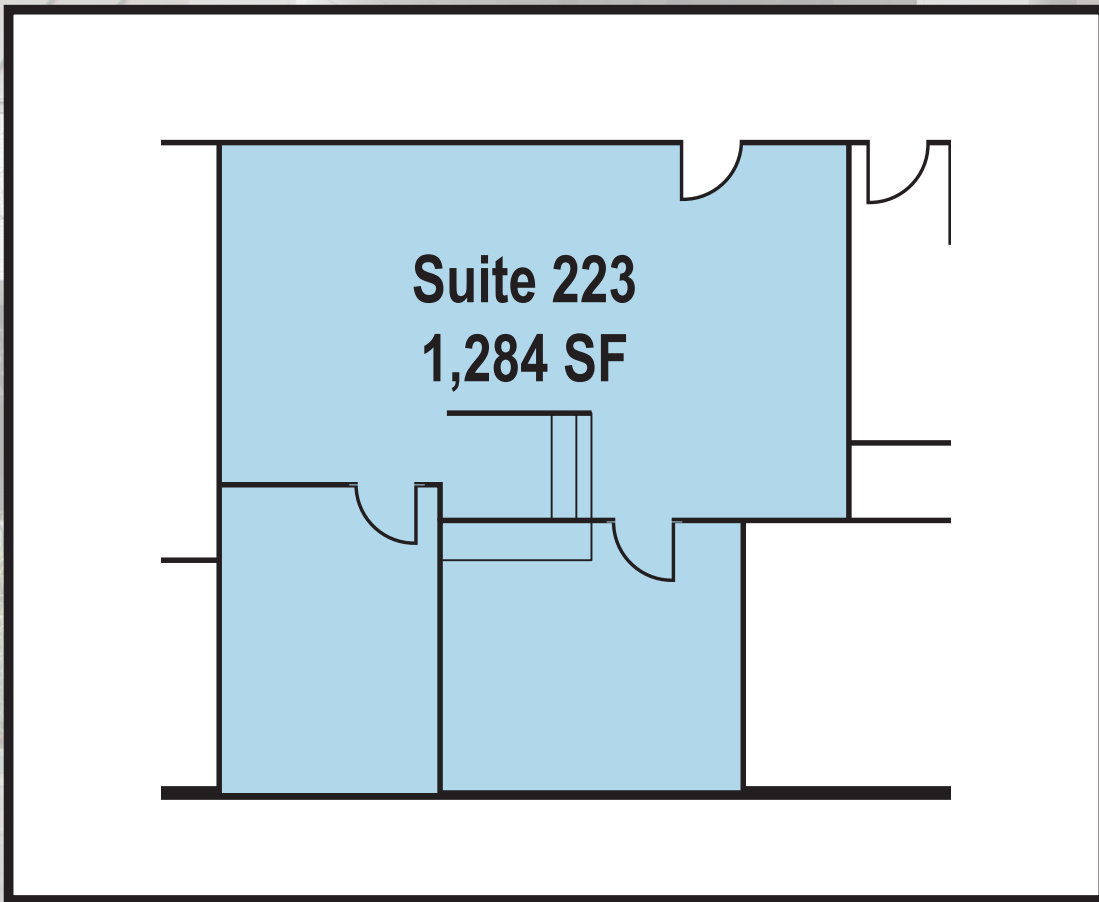


Rentable SF	Suite	Description	Rate
1,484 SF	202	Corner Unit with 2 Sides of Glass, Providing Ample Natural Light. 1 Private Office & Open Area.	\$1.65 FSG



Second Floor Plan

Rentable SF	Suite	Description	Rate
1,284 SF	223	2 Private Offices, Open Area, and Kitchenette with Sink.	\$1.85 FSG







NEARBY AMENITIES

Foothill
High School

STIN

RESTAURANTS

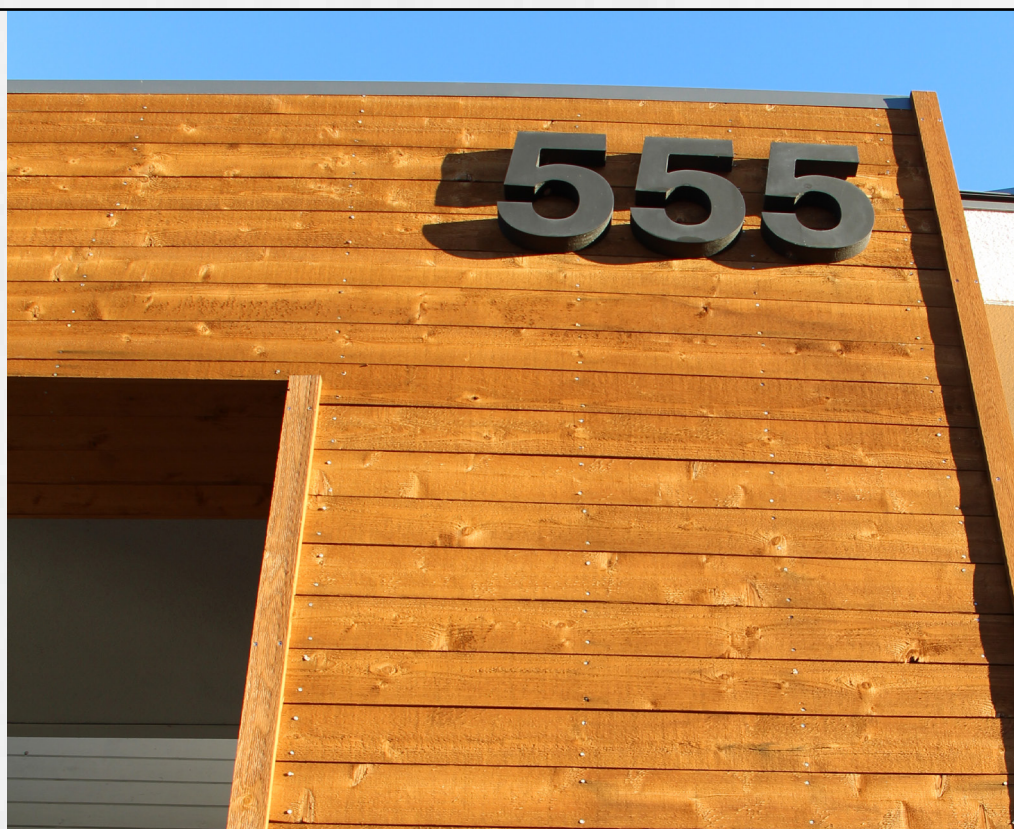
- 1 Subway
- 2 Round Table Pizza
- 3 Zovs Cafe
- 4 Islands
- 5 Claim Jumper Restaurant & Saloon
- 6 El Torito
- 7 Souplantation & Sweet Tomatoes
- 8 Black Angus Steakhouse
- 9 Ono Ono Hawaiian BBQ
- 10 McDonald's
- 11 Del Taco
- 12 Mimi's Cafe
- 13 Wendy's
- 14 Wienerschnitzel
- 15 El Pollo Loco
- 16 Philly's Best
- 17 Starbucks
- 18 Flame Broiler
- 19 Rubio's
- 20 Farmer Boys
- 21 Harbor Seafood Buffet
- 22 Chipotle Mexican Grill
- 23 Wahoo's Fish Taco
- 24 Firehouse Subs
- 25 Dickey's Barbecue Pit
- 26 Jersey Mike's Subs
- 27 McDonald's
- 28 Taco Bell
- 29 El Pollo Loco
- 30 Chipotle Mexican Grill

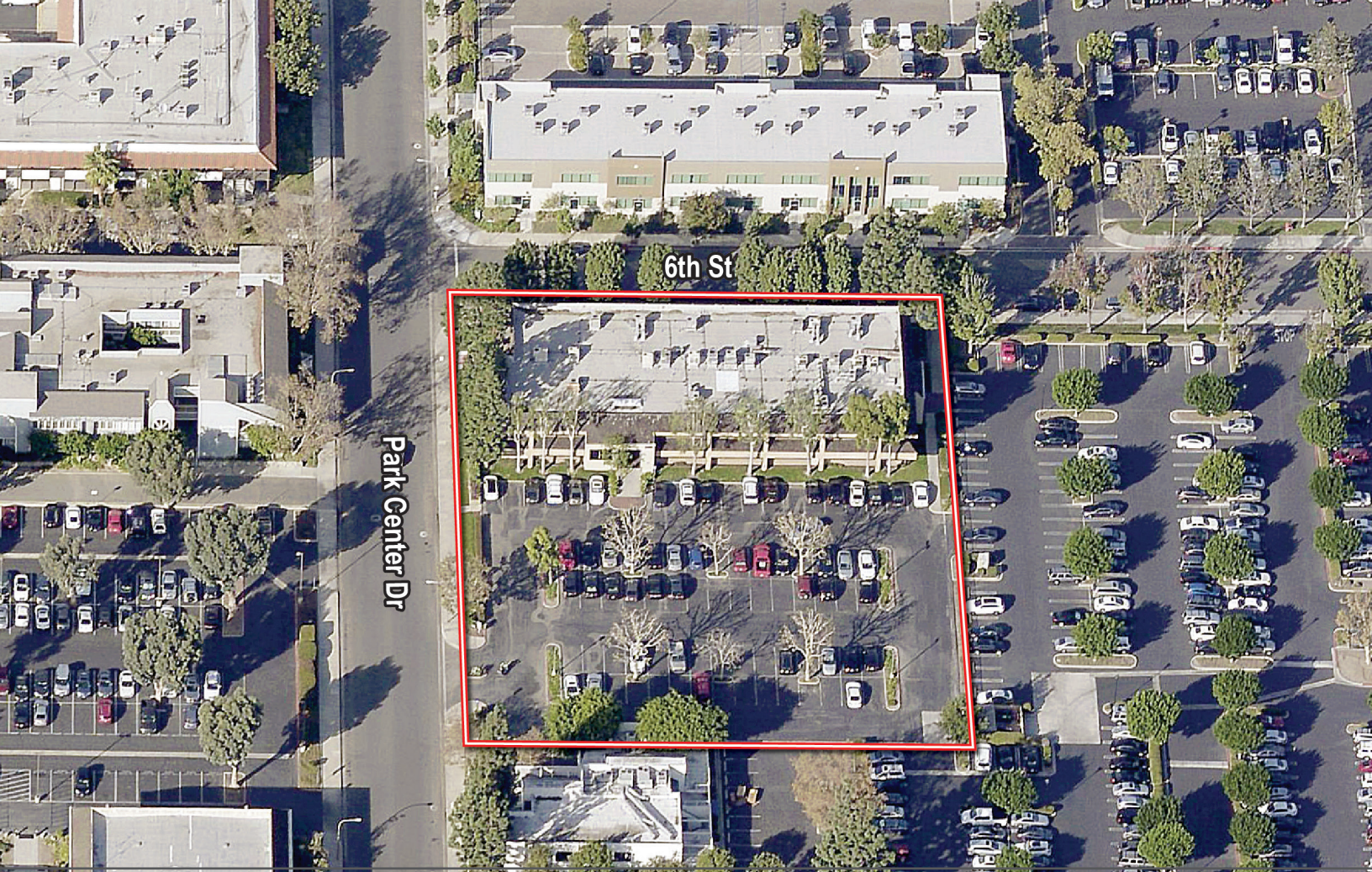
BANKS

- 1 California Bank & Trust
- 2 Farmers & Merchants Bank
- 3 Wells Fargo Bank
- 4 California Bank And Trust
- 5 Citizens Business Bank
- 6 Banc of California
- 7 Citibank
- 8 Bank of America

RETAIL

- 1 Hobby Lobby
- 2 Ganahl Lumber
- 3 CVS Pharmacy
- 4 O'Reilly Auto Parts
- 5 Albertsons
- 6 Target
- 7 Marshalls
- 8 TJ Maxx
- 9 CVS Pharmacy
- 10 Ross Dress For Less
- 11 Superior Grocers





Voit

REAL ESTATE SERVICES

CHRIS DRZYZGA, SIOR

Senior Vice President

Lic. #01926212

949.263.5303

chrisd@voitco.com

PAT MCCREDIE

Senior Associate

Lic. #02014408

949.263.5321

pmccredie@voitco.com

**555 PARK CENTER DRIVE
SANTA ANA, CA**

