

Sandy Freestanding Drive-thru

1373 E. 10600 S.
Sandy, UT 84092



RETAIL | FOR LEASE

PROPERTY INFORMATION

- > 1,500 SF
- > \$6,750.00/mo, NNN
- > Grease trap
- > Great visibility and access
- > 15 parking spaces

DEMOGRAPHICS

POPULATION	1 MILE	3 MILE	5 MILE
2024 EST	13,903	105,107	239,363
2029 PROJ	13,520	103,390	238,734

HOUSEHOLDS	1 MILE	3 MILE	5 MILE
2024 EST	4,486	36,146	85,407
2029 PROJ	4,466	36,464	87,330

INCOME	1 MILE	3 MILE	5 MILE
2024 AVG	\$159,912	\$164,164	\$151,412
2024 MED	\$125,108	\$122,088	\$112,958

Source: ESRI 2024

NAIPremier

COMMERCIAL REAL ESTATE SERVICES, WORLDWIDE

801 255 3333 | naipremier.com

Marlon Hill

Principal Broker, MBA

801 548 3262

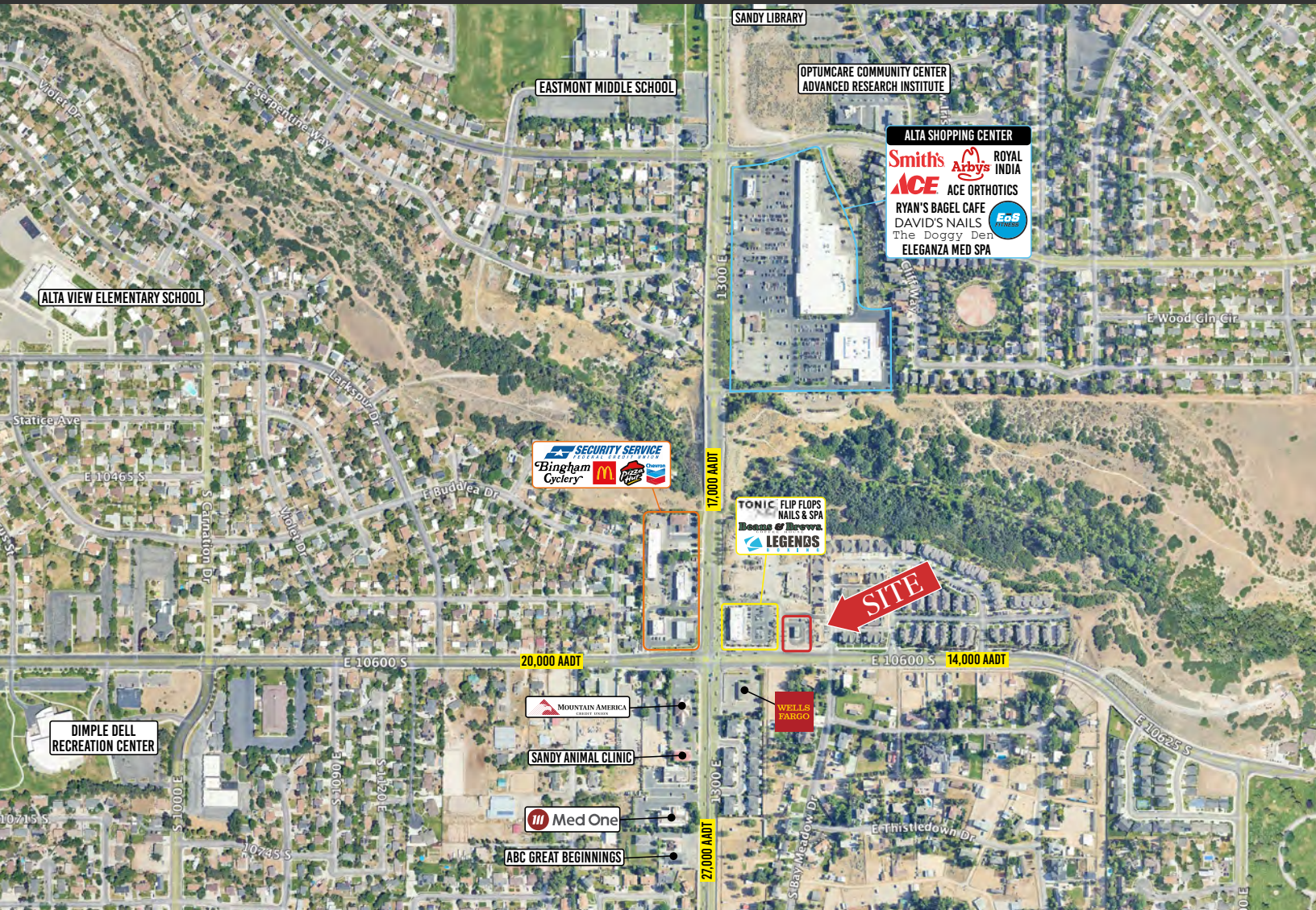
mhill@naipremier.com

Tom Longaker

Associate Broker

801 755 1264

tlongaker@naipremier.com



NAIPremier

7455 Union Park Avenue Ste. A, Midvale, Utah 84047

801 255 3333 | naipremier.com

NO WARRANTY OR REPRESENTATION, EXPRESS OR IMPLIED, IS MADE AS TO THE ACCURACY OF THE INFORMATION CONTAINED HEREIN, AND THE SAME IS SUBMITTED SUBJECT TO ERRORS, OMISSIONS, CHANGE OF PRICE, RENTAL OR OTHER CONDITIONS, PRIOR SALE, LEASE OR FINANCING, OR WITHDRAWAL WITHOUT NOTICE, AND OF ANY SPECIAL LISTING CONDITIONS IMPOSED BY OUR PRINCIPALS NO WARRANTIES OR REPRESENTATIONS ARE MADE AS TO THE CONDITION OF THE PROPERTY OR ANY HAZARDS CONTAINED THEREIN ARE ANY TO BE IMPLIED.