




FOR LEASE

308-314 S 25th Street
Colorado Springs, CO 80904

PROPERTY SPECIFICATIONS

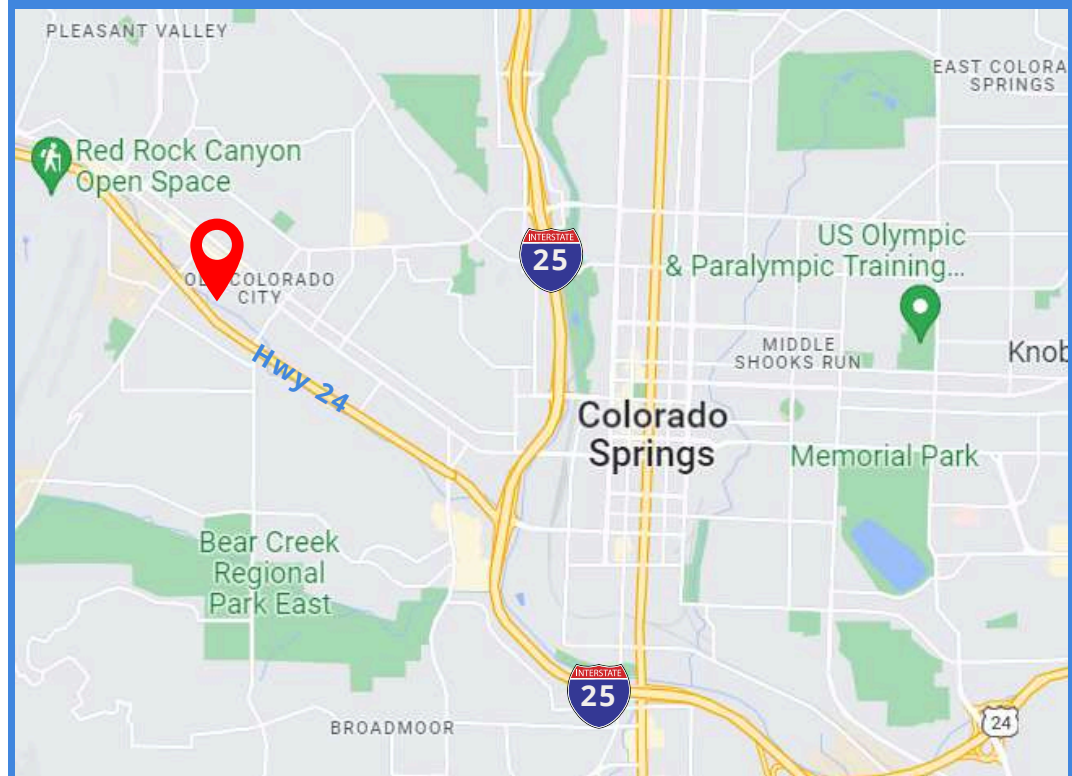
 **LOCATION** 308-314 S 25th Street
Colorado Springs, CO 80904

 **SPACE AVAILABLE**
310 S 25th 1,600 SF

 **LEASE RATE** \$18.50 /SF
Modified Gross

 **ZONING** MX-L (Previously C6)

MAP



Additional Features:

- Drive-In Loading Doors
- Conveniently located off Hwy 24
- Midland Trails Access
- Roughly 30% Office and 70% Warehouse
- Rare westside industrial vacancy


JASON CASTRO


President



jason@peakcp.net
719.227.9987



 2727 N. Cascade Avenue,
Suite 127, Colorado Springs, CO 80907

 719.227.9987

 www.peakcp.net

Peak Commercial Properties believes information contained herein, while not guaranteed, is from sources they believe reliable. Price, terms, and information are subject to change without notice.

FOR LEASE

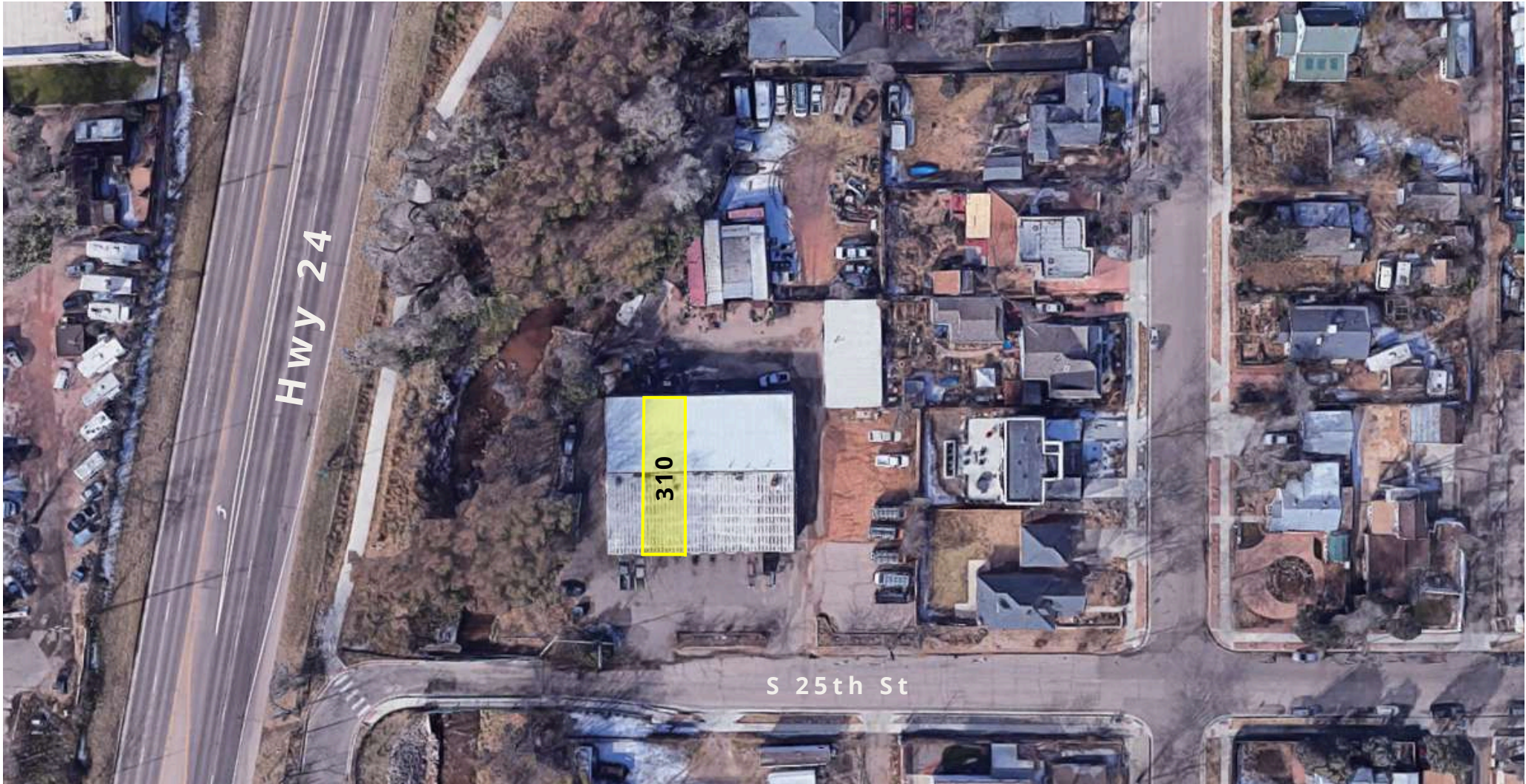
308-314 S 25th Street
Colorado Springs, CO 80904



FOR LEASE

308-314 S 25th Street
Colorado Springs, CO 80904

AERIAL



312

312

The particulars, details and visuals shown herein are intended to give a general idea of the property. As such, they are not to be relied upon as statements of fact



2727 N. Cascade Avenue,
Suite 127, Colorado Springs, CO 80907

719.227.9987

www.peakcp.net

Peak Commercial Properties believes information contained herein, while not guaranteed, is from sources they believe reliable. `Price, terms, and information are subject to change without notice.