

FOR LEASE

2939 W PECAN ST, PFLUGERVILLE, TX 78660



22,000 SF Warehouse on 2.27 Acre Site

ABOUT THE PROPERTY:

2939 W Pecan Street is a 22,000 SF single-tenant industrial project situated on a 2.27-acre site in Pflugerville, TX. This property features five grade-level doors, a fenced and gated yard space, and direct visibility from FM 1825. The property boasts easy accessibility to the North and South IH-35 corridors, as well as quick access to TX-130 and TX-45.

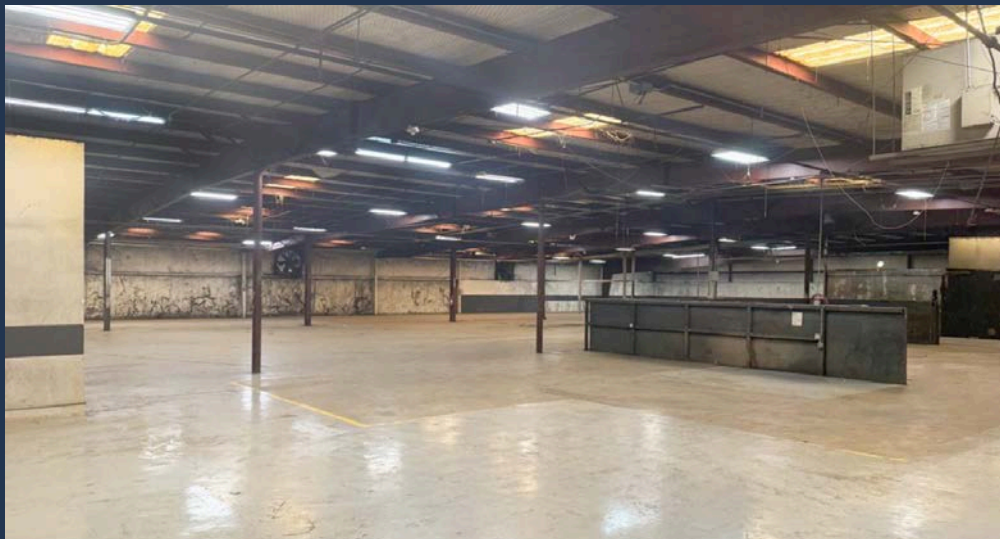
FEATURES:

- 22,000 SF warehouse (incl. 2,000 SF office)
- 2.27-acre site
- 3-phase power (1,600 amps, 480V)
- Five (5) grade-level doors
- Fenced and gated yard space
- Quick access to N and S IH-35 corridors (VPD = 75,000+)

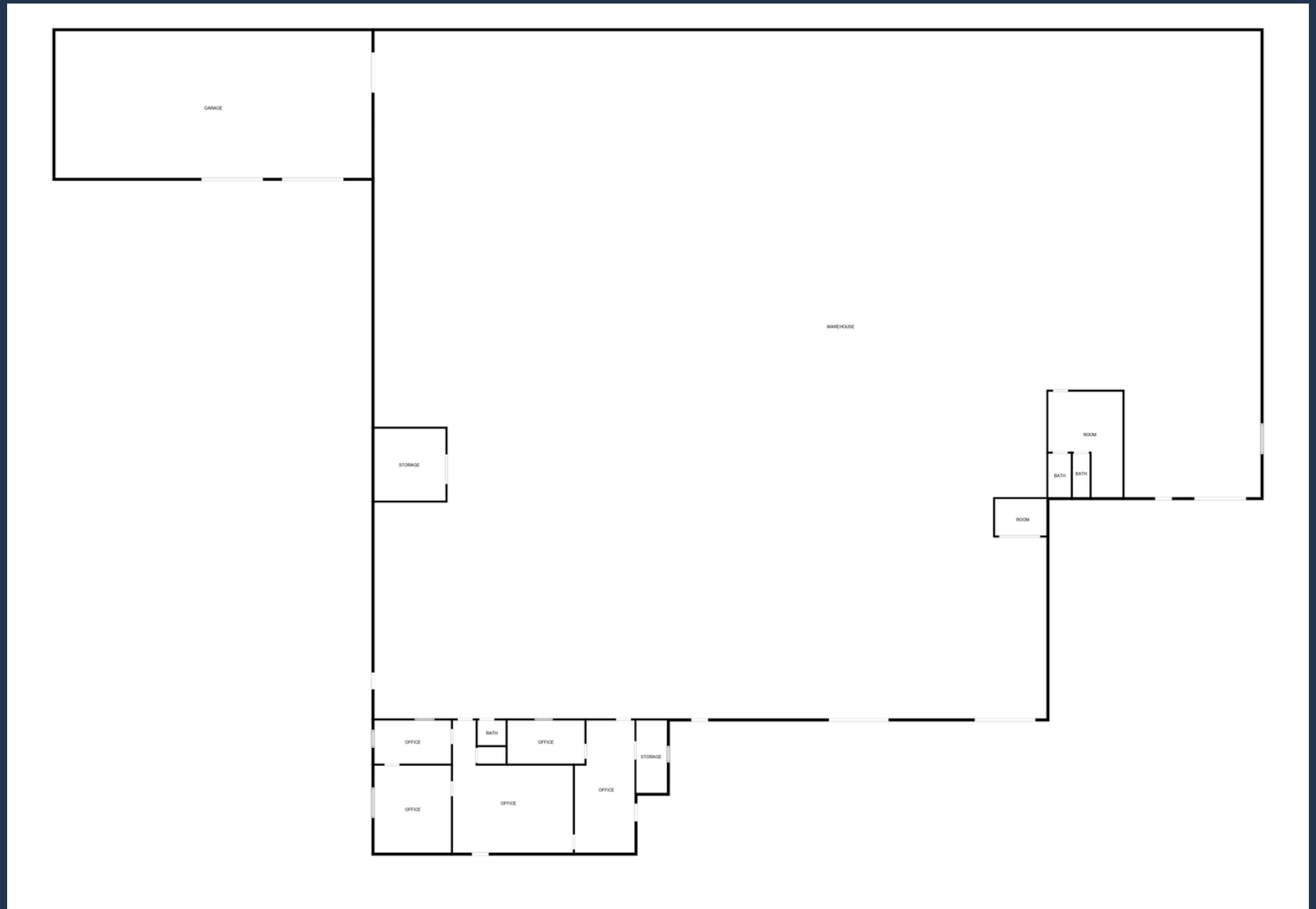
PROPERTY HIGHLIGHTS



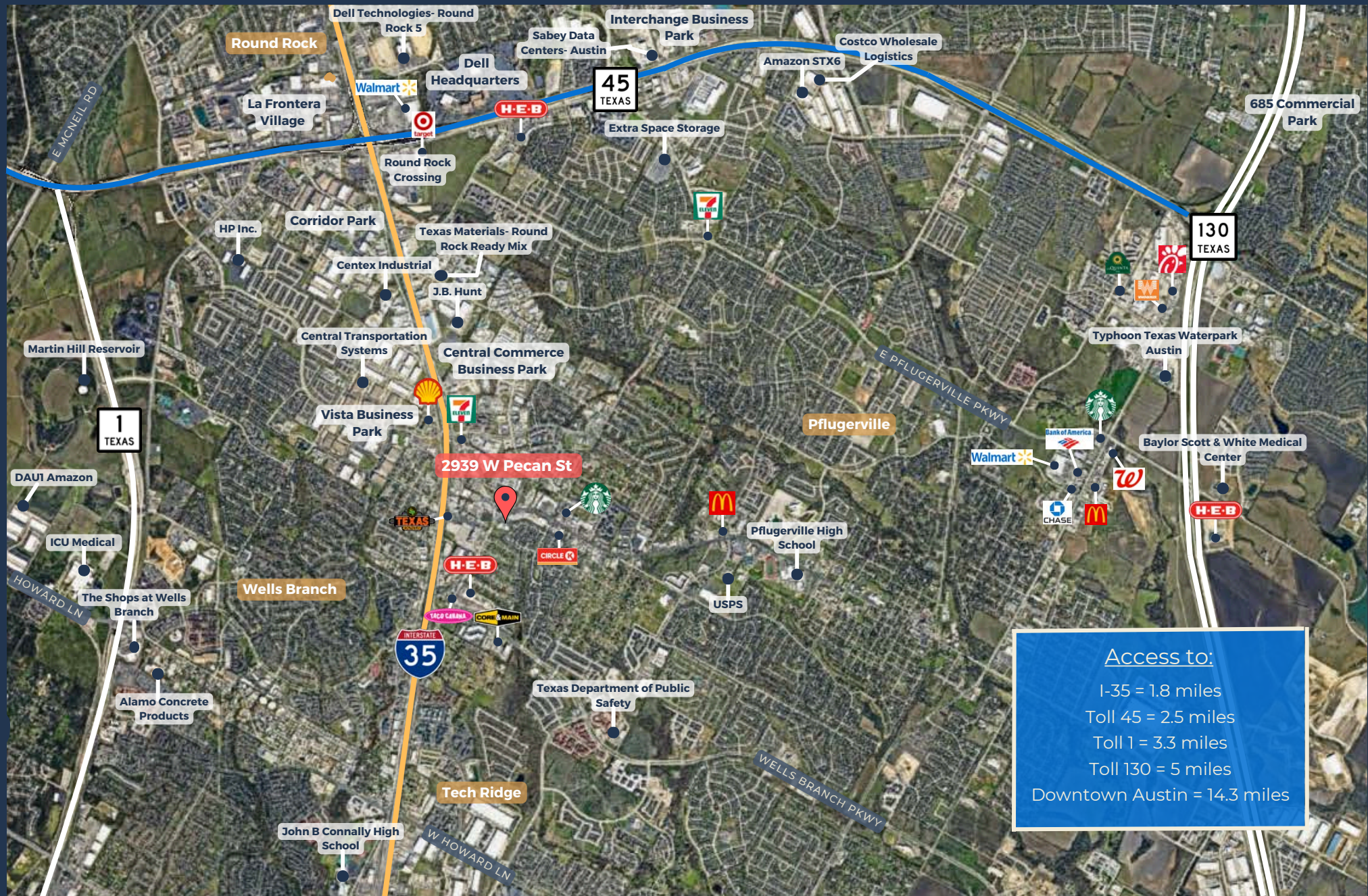
PROPERTY HIGHLIGHTS



FLOOR PLAN



AREA DETAILS & OVERVIEW





CONTACT OUR TEAM



Cullen Mills
Co-Founder & President
cmills@llanorealty.com
(210) 926-5812



Colin McLellan
Partner
cmclellan@llanorealty.com
(210) 908-6345



Carson Byrd
Associate
cbyrd@llanorealty.com
(210) 941-0289