



*Market*Place

2003 Western Ave • Seattle, WA

Join Anchorhead Coffee, Locust Cider, Perfume by Fire & Vine Hospitality, Cutlers Crabhouse, and Sugo Hand Roll Bar.





For 115 years, Pike Place Market has gained popularity for its rain or shine locals-only vendor booths. The Pike Place Market Center is more than a market; it is home to over 500 shops, vendors, restaurants, and bars.



- 10 million** Annual Visitors
International, national, and local visitors are drawn in by local buskers, fresh local produce, flowers, and fishmongers.
- 500** Small Businesses
An international bouquet of restaurants, 80+ farms, 200 artisanal craftsmen, and boutique brick-and-mortar shops all sell their wares in the multi-level market.
- 450** Residents
400 mixed-income apartments with market rate apartments & condos as well as low-income, elderly, and disabled friendly shared living spaces.
- 300** Annual Buskers
Representing the most prominent location for permitted busking in Seattle, visitors of Pike Place are entertained by this time-honored tradition of experiencing local arts and culture.

Seattle Waterfront Alaskan Way Development

The Seattle Waterfront project aims to connect the waterfront & Belltown to Western Avenue with a Seneca Street renovation and the new Elliott Way that includes new parking, landscaping, and lighting. Improved connections to park spaces, the Market's stores and restaurants, as well as the waterfront and Colman dock allows for pedestrian traffic and vehicle traffic to flow freely through these iconic spaces.

Port of Seattle
Where a sustainable world is headed.

296
Scheduled Sailings
The 2022 Cruise season is back in Full Force with a record number of scheduled sailings

1.26 million
Annual Passengers

7
Internationally Acclaimed
Cruise Operators





MarketPlace

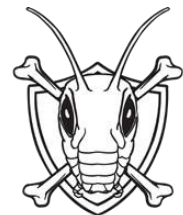
Market Place I & II neighbors Pike Place Market from the north and overlooks Elliott Bay, the Olympic Mountains, and the Downtown Seattle Area. Easily accessible to the retail district, office district, and marina, this location is central to the Seattle Waterfront Development currently underway along the Alaskan Way Viaduct. The building is host to 131,000 SF of Class A office space, and recently underwent renovation to the lobby and plaza in 2016. The parking stalls are shared with Pike Place Market, and it's surrounding businesses.

■ **131K**
SF Office Space

■ **400**
Parking Stalls



AERLUME



LOCUST
CIDER & BREWING CO.



Downtown Seattle



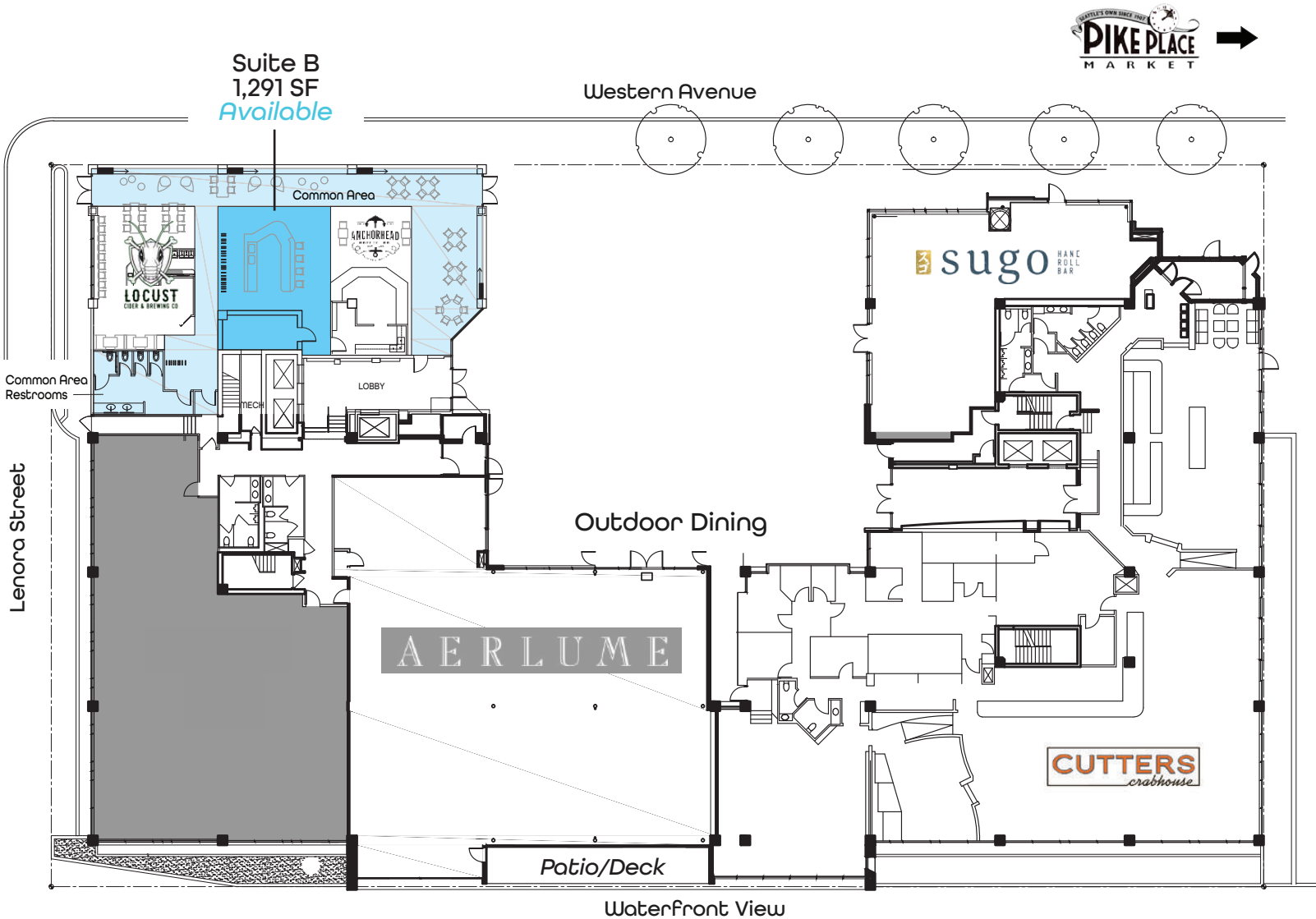
RETAIL

STAY

CULTURE

DINING

Space Available



One of a kind opportunity to join Locust Cider, Anchorhead Coffee, Cutters Crabhouse, Aerlume by Fire & Vine Hospitality, and Sugo Hand Roll Bar at Market Place off Western Ave in the Pike Place Market District.

■ **1,291 SF**
Available (*Not able to vent*)

■ **NNN's \$10.17 PSF**

■ **Rate Call For Rates**



REAL RETAIL

Eric Zuehlsdorff
808-221-1134 Cell
eric@real-retail.net

Andrew Miller
206-818-3629 Cell
amiller@real-retail.net

This information supplied herein has been secured from sources believed to be reliable; however, no representations are made to its accuracy. Prospective tenants or buyers should consult their professional advisors and conduct their own independent investigation. Properties are subject to change in price and/or availability without notice.