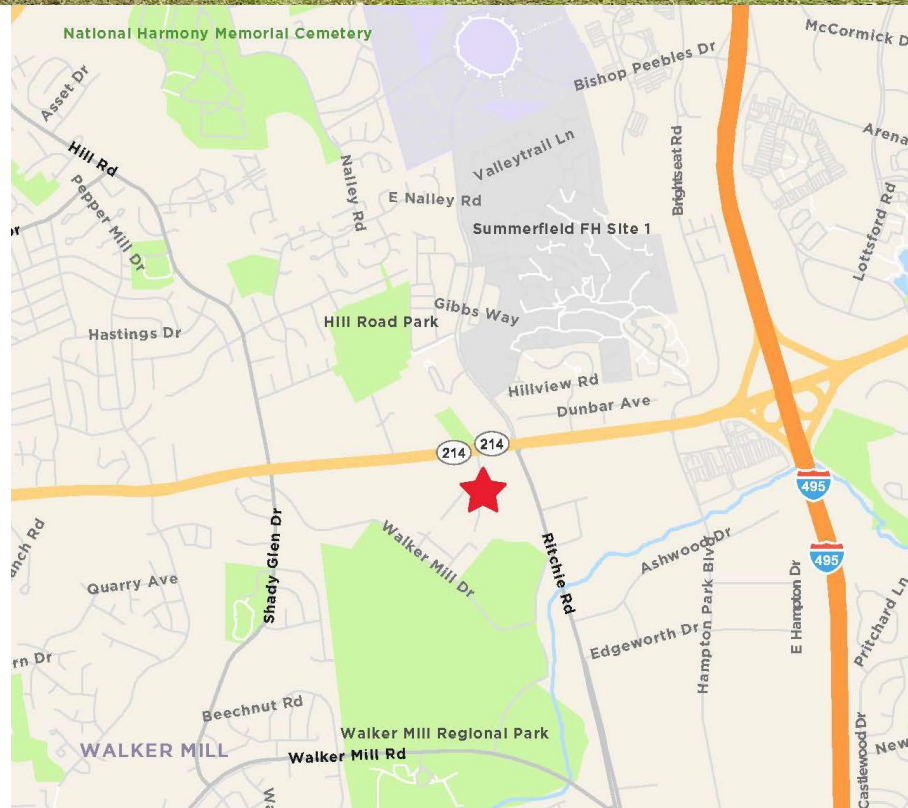




PROPERTY FEATURES

- 62,508 SF (Divisible)
- Available immediately
- Rental Rate: \$8.95 NNN
- Four (4) docks, one (1) drive-in
- Zoned I-1
- Abundant parking



For more information, please contact:

Jon Lawrence
Executive Director
703-847-2787

Jon.Lawrence@cushwake.com

Kevin Dougherty
Associate
703-847-2788

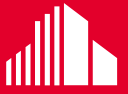
Kevin.Dougherty@cushwake.com

CUSHMAN & WAKEFIELD OF VIRGINIA

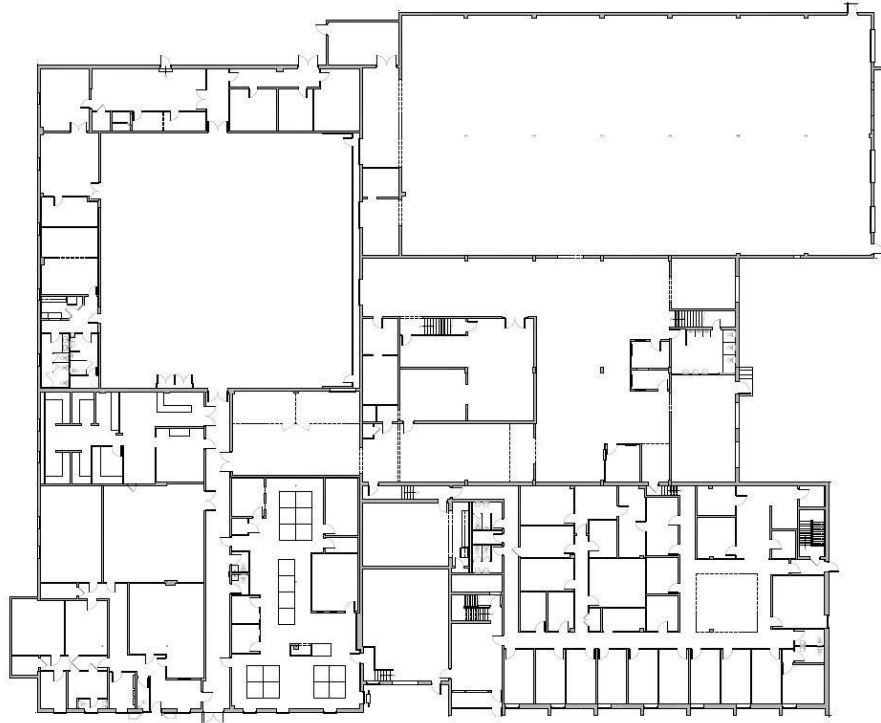
1800 Tysons Boulevard | Suite 200

Tysons Corner | VA 22102

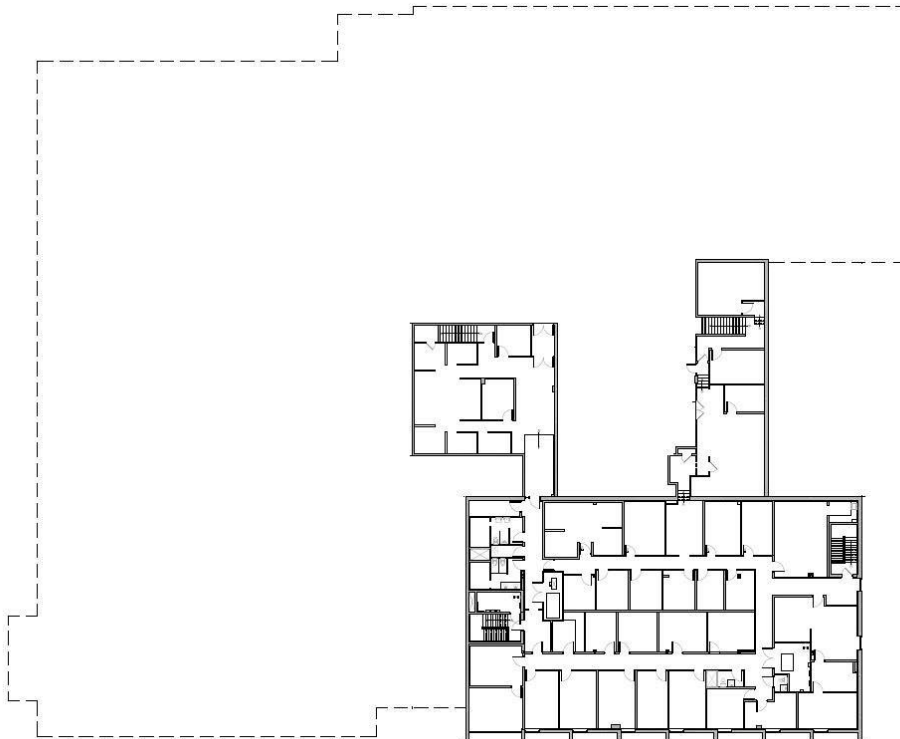
www.cushmanwakefield.com



First Floor



Second Floor



For more information, please contact:

Jon Lawrence
Executive Director
703-847-2787

Jon.Lawrence@cushwake.com

Kevin Dougherty
Associate
703-847-2788

Kevin.Dougherty@cushwake.com

CUSHMAN & WAKEFIELD OF VIRGINIA

1800 Tysons Boulevard | Suite 200

Tysons Corner | VA 22102

www.cushmanwakefield.com