

GENERAL NOTES

- 1) The field data upon which this plat is based has a precision of one foot in 34,587 feet and an angular error of 02" per angle point and was adjusted using least squares.
- 2) This plat has been calculated for closure and has an accuracy of one foot in 559,830 feet.
- 3) Field equipment used for this survey was a Topcon GPT2005.
- 4) All easements, restrictions, or exceptions to title are shown based on information supplied to INGRAM, LORD AND ASSOCIATES. No Certification as to the completeness or accuracy of any matters of title is made by INGRAM, LORD AND ASSOCIATES.
- 5) Underground utilities shown on this plat were taken from field observation and from plats by others, the exact location of all utilities should be verified by the respective utility company. INGRAM, LORD AND ASSOCIATES assumes no liability as to the exact location of any underground utility. For verification contact the utilities Protection Center Inc. 1-800-282-7411.
- 6) This survey is a correct representation of the land platted and has been plotted in conformity with the minimum standards of Georgia Law. It does not intend to indicate ownership of any parcel or easement, this information should be verified by an attorney licensed by the state of Georgia.

MAGNETIC NORTH

** LEGEND **

- IPF = IRON PIN FOUND
- IPS = IRON PIN SET
- CMF = CONCRETE MONUMENT FOUND
- R/W = RIGHT OF WAY
- BL = BUILDING LINE
- LLL = LAND LOT LINE
- LL = LAND LOT
- N/F = NOW OR FORMERLY
- NTS = NOT TO SCALE
- CL = CENTER LINE
- BM = BENCH MARK
- TBM = TEMPORARY BENCH MARK
- PC = POINT OF CURVATURE
- PI = POINT OF INTERSECTION
- PT = POINT OF TANGENCY
- R = RADIUS
- CH = CHORD
- IE = INVERT ELEVATION
- T- = TELEPHONE LINE
- W- = WATER LINE
- G- = GAS LINE
- S- = SEWER LINE
- P- = POWER LINE
- MH = MAN HOLE
- SSE = SANITARY SEWER EASEMENT
- DE = DRAINAGE EASEMENT
- CE = CONSTRUCTION EASEMENT
- CB = CATCH BASIN
- JB = JUNCTION BOX
- DI = DROP INLET
- HW = HEAD WALL
- FH = FIRE HYDRANT
- RCP = REINFORCED CONCRETE PIPE

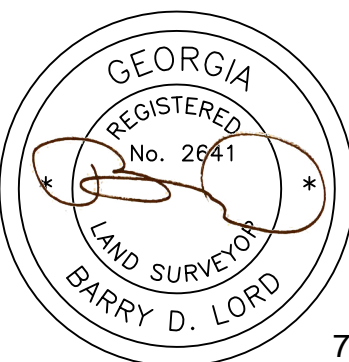
U.S. HWY. NO. 441
NORTHBOUND LANES
R/W VARIES

2.720 ACRES
PB.65 PG.287
020 004C

N/F T&B II, INC.
020 004D

RETRACEMENT SURVEY FOR:
CLYDE MARK MONTGOMERY
SHIRLEY ANN MONTGOMERY

GMD NO.255
JACKSON COUNTY, GEORGIA
SCALE: 1"=60'
DATE: FIELD 7-15-2022
DRAWING 7-15-2022

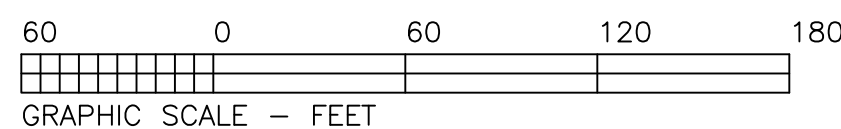


7-15-2022

This plat is a retracement of an existing parcel or parcels of land and does not subdivide or create a new parcel or make changes to any real property boundaries. The recording information of the documents, maps, plats, or other instruments which created the parcel or parcels are stated hereon. RECORDATION OF THIS PLAT DOES NOT IMPLY APPROVAL OF ANY LOCAL JURISDICTION. AVAILABILITY OF PERMITS, COMPLIANCE WITH LOCAL REGULATIONS OR REQUIREMENTS, OR SUITABILITY FOR ANY USE OR PURPOSE OF THE LAND. Furthermore, the undersigned land surveyor certifies that this plat complies with the minimum technical standards for property surveys in Georgia as set forth in the rules and regulations of the Georgia Board of Registration for Professional Engineers and Land Surveyors and as set forth in O.C.G.A. Section 15-6-67.

7-15-2022
DATE

BARRY D. LORD SA BLS#2641



INGRAM, LORD & ASSOCIATES
LAND SURVEYING AND PLANNING
437 SAM BROWN BLVD.
COMMERCE, GEORGIA 30529
706-335-9069

IL4397A