

PLYMOUTH GREENE OFFICE BUILDING

920 Germantown Pike | Plymouth Meeting, PA 19462

For Lease



Property Overview

Available
4,485 SF

Plymouth Greene Office Building is located just outside Philadelphia and is an exceptional location for medical office users in the Blue Bell / Plymouth Meeting submarket and the surrounding suburbs. Plymouth Greene Office Building is situated between US Route 202 and Interstate 476, just off the Plymouth Meeting Interchange and the Pennsylvania Turnpike.

1000 Germantown Pike, Suite A-2 | Plymouth Meeting, PA 19462 | www.PennmarkProperties.com | 610-272-6500 x126



PLYMOUTH GREENE OFFICE BUILDING

920 Germantown Pike | Plymouth Meeting, PA 19462

For Lease

ROAD COUNTS



DEMOGRAPHICS	1 MILE	5 MILE	10 MILE
TOTAL POPULATION	8,956	180,621	873,958
TOTAL EMPLOYEES	12,034	142,248	565,372
AVERAGE HHI	\$124,842	\$121,733	\$126,641
TOTAL HOUSEHOLDS	3,592	72,002	348,908



1000 Germantown Pike, Suite A-2 | Plymouth Meeting, PA 19462 | www.PennmarkProperties.com | 610-272-6500 x126

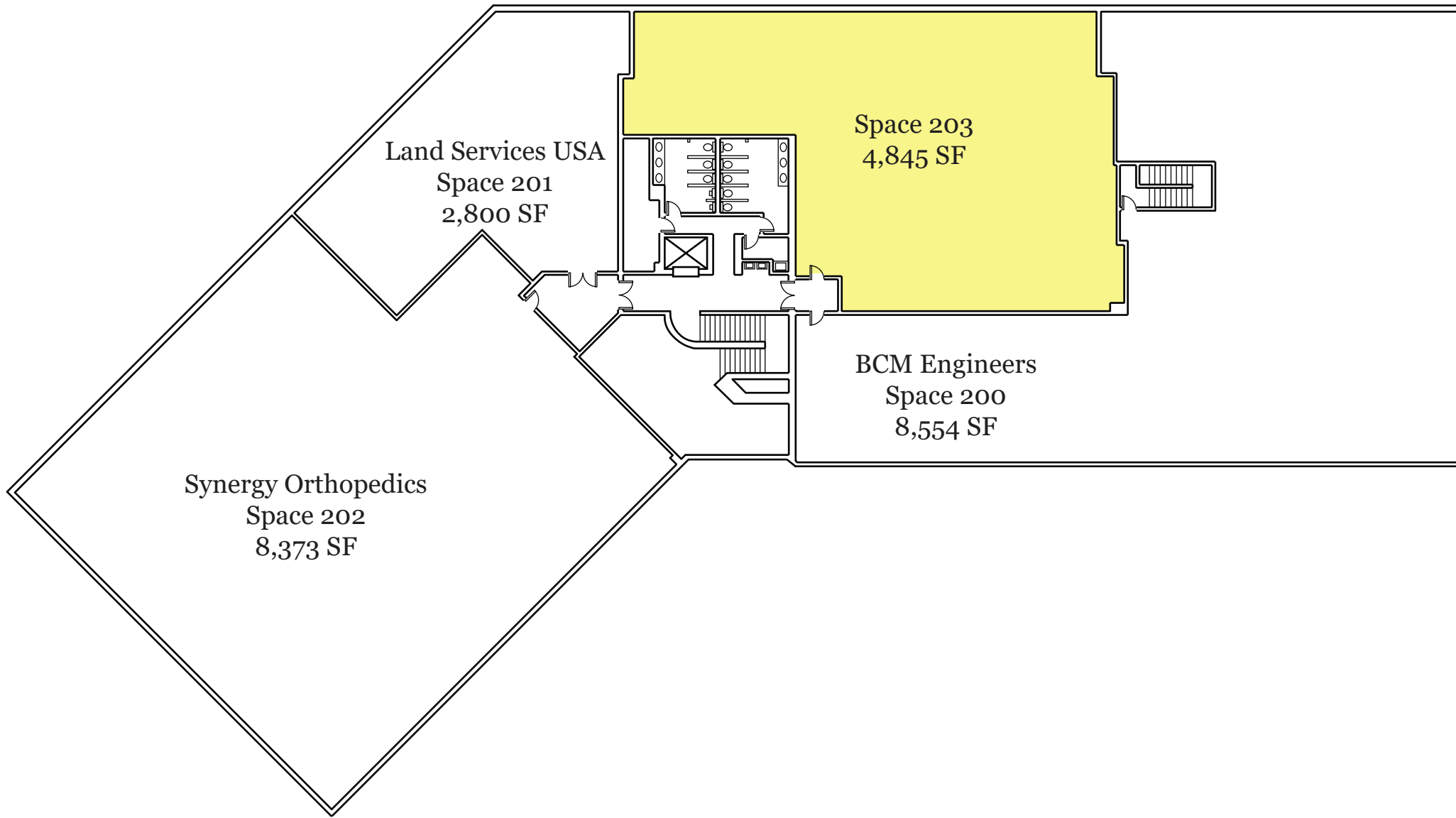


PLYMOUTH GREENE OFFICE BUILDING

920 Germantown Pike | Plymouth Meeting, PA 19462

For Lease

SITE PLAN

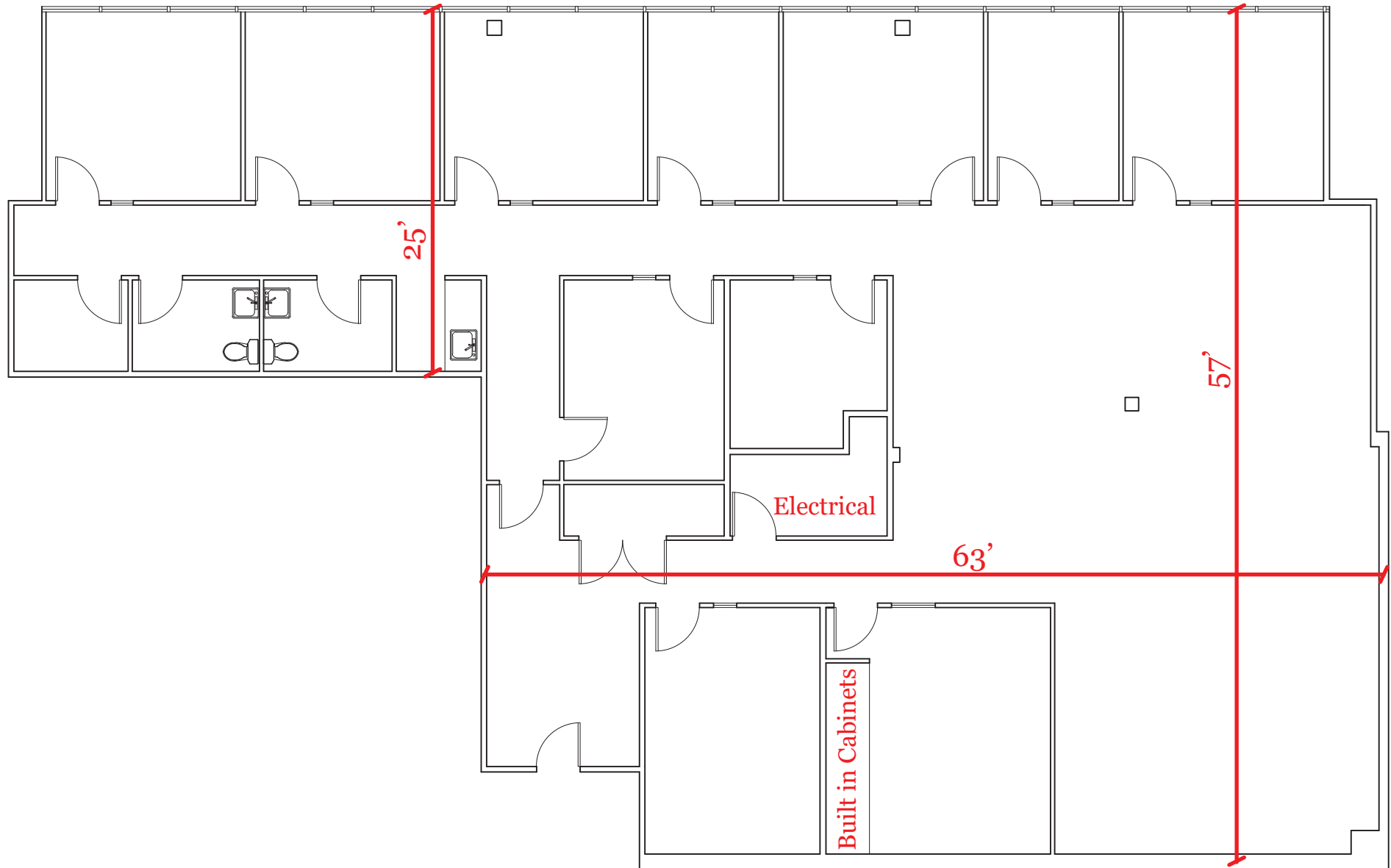


PLYMOUTH GREENE OFFICE BUILDING

920 Germantown Pike | Plymouth Meeting, PA 19462

For Lease

SPACE PLAN



PLYMOUTH GREENE OFFICE BUILDING

920 Germantown Pike | Plymouth Meeting, PA 19462

For Lease

SITE



Germantown Pike
25,053 VPD

1000 Germantown Pike, Suite A-2 | Plymouth Meeting, PA 19462 | www.PennmarkProperties.com | 610-272-6500 x126

