

2250 14TH STREET
DETROIT, MICHIGAN

INVESTMENT PROPERTY SALE
45,892 Square Feet Available



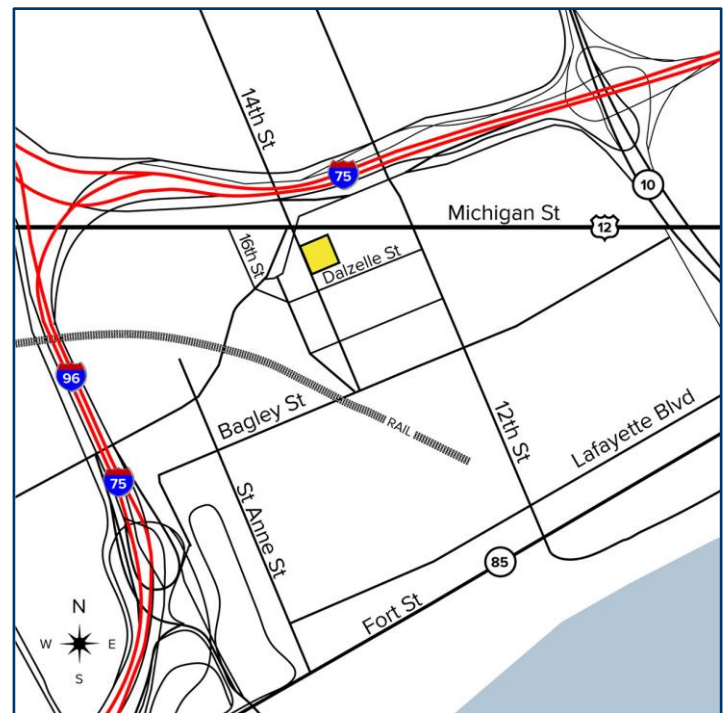
**SIGNATURE
ASSOCIATES**
KNOW SIGNATURE | KNOW RESULTS

FORMER HOTEL



PROPERTY FEATURES

- 45,892 square foot building
- Redevelopment Site
- 4-Story Former Hotel
- 93 Rooms
- B-4, General Business Zoning
- Commercial space on the 1st floor
- 3,743 square foot basement area
- Sale Price: \$10,000,000



For more information, please contact:

CHRIS MONSOUR
(248) 948 0107
cmonsour@signatureassociates.com

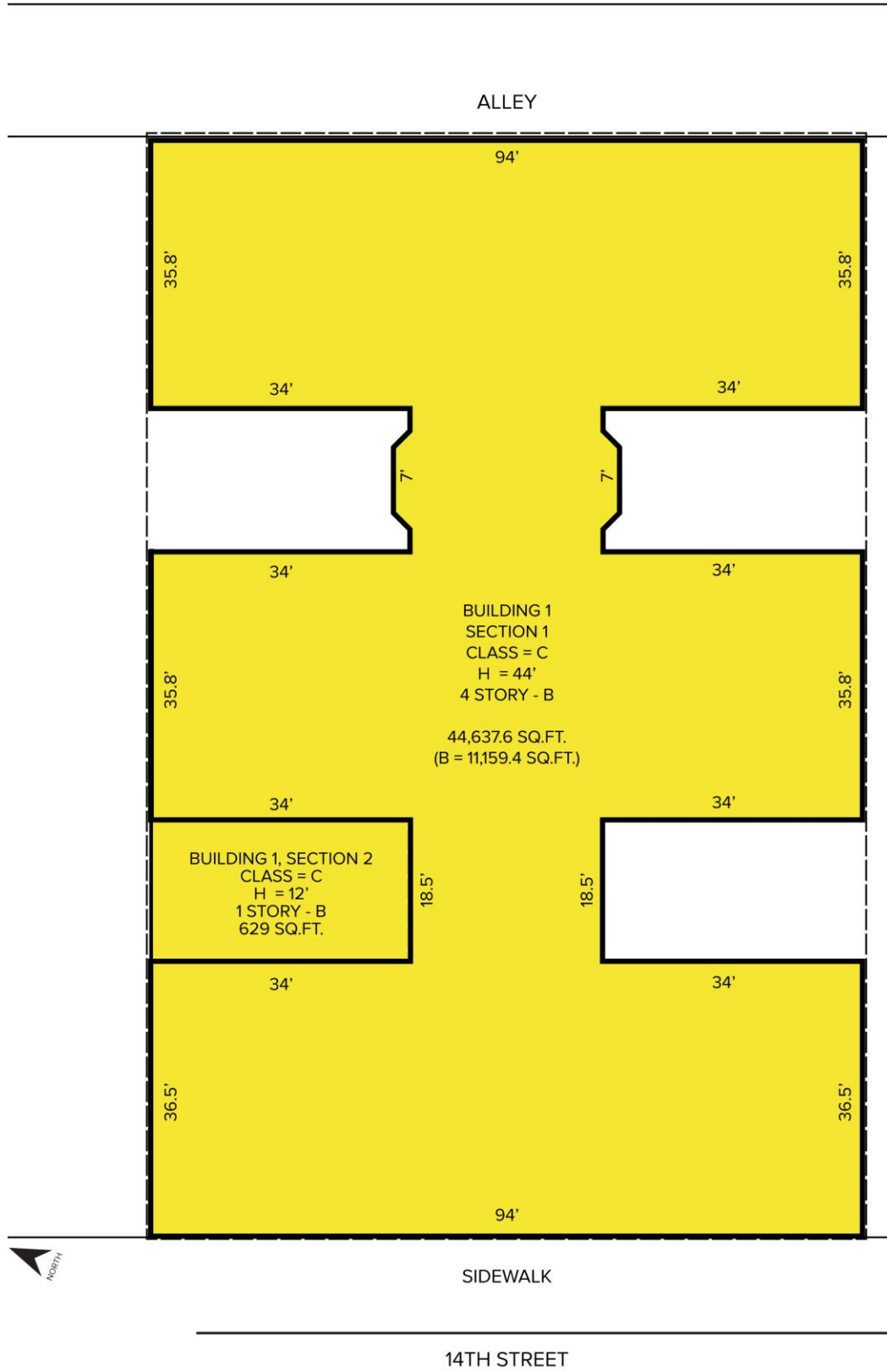
SIGNATURE ASSOCIATES
One Towne Square, Suite 1200
Southfield, MI 48076
www.signatureassociates.com

2250 14th Street – Detroit, Michigan

Investment Property Sale

45,892
Square Feet
AVAILABLE

Site Plan



For more information, please contact:

CHRIS MONSOUR
(248) 948 0107
cmonsour@signatureassociates.com

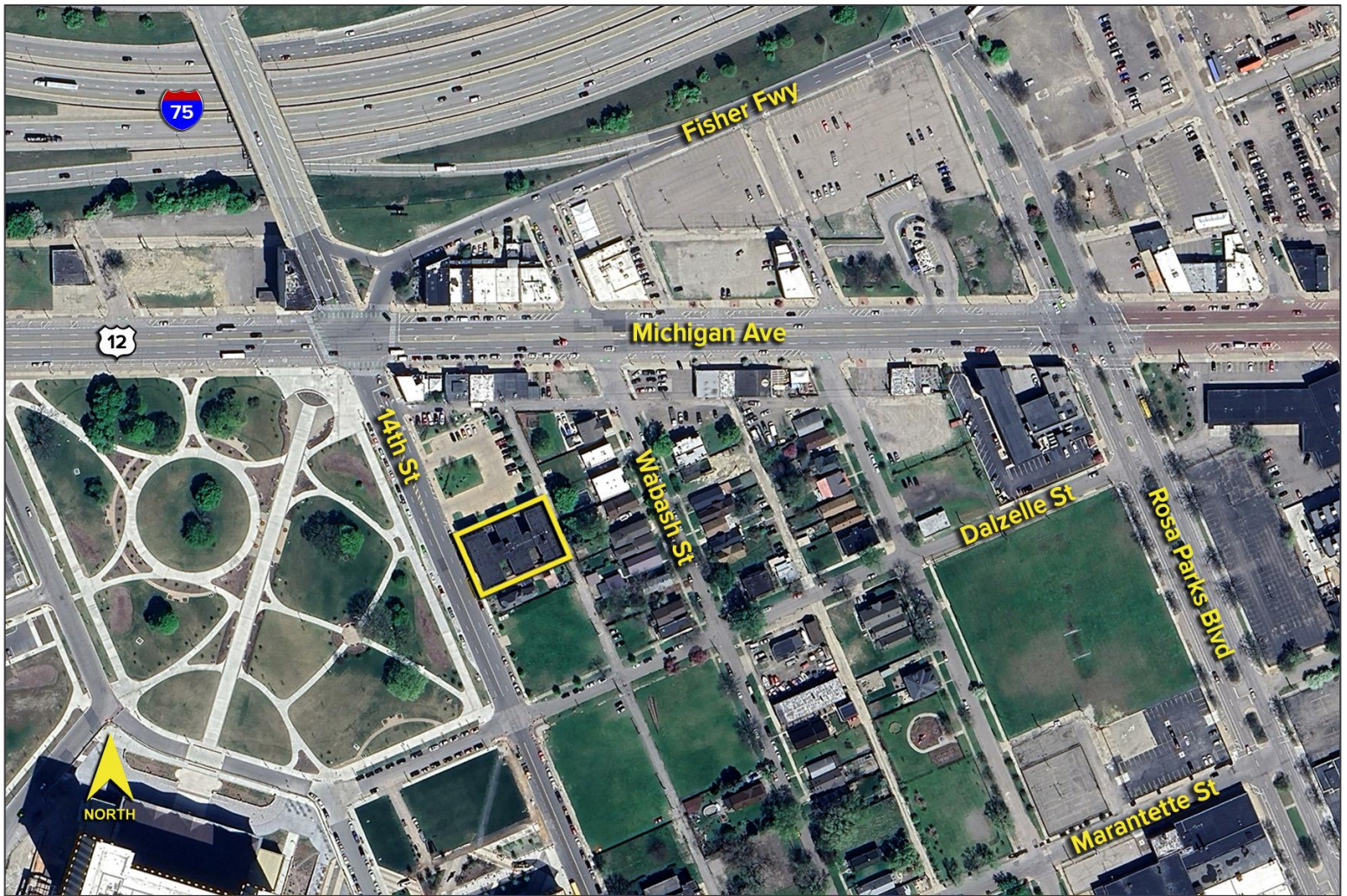
SIGNATURE ASSOCIATES
One Towne Square, Suite 1200
Southfield, MI 48076
www.signatureassociates.com

2250 14th Street – Detroit, Michigan

Investment Property Sale

45,892
Square Feet
AVAILABLE

Aerial



For more information, please contact:

CHRIS MONSOUR
(248) 948 0107
cmonsour@signatureassociates.com

SIGNATURE ASSOCIATES
One Towne Square, Suite 1200
Southfield, MI 48076
www.signatureassociates.com