

# FOR LEASE

HIGH EXPOSURE RESTAURANT OPPORTUNITY IN ABBOTSFORD

33486 SOUTH FRASER WAY, ABBOTSFORD, BC



**Stefan Safrata**

Personal Real Estate Corporation  
Director, Investments & Leasing  
(604) 398-4352  
Stefan.Safrata@MarcusMillichap.com

**Joey Yoo**

Personal Real Estate Corporation  
Director, Investment Sales  
(604) 675-5236  
Joey.Yoo@MarcusMillichap.com

Marcus & Millichap

1100 - 1111 West Georgia Street  
Vancouver, BC V6E 4M3  
(604) 638-2121



## Opportunity Overview

Prime opportunity to lease 3,926 SF of retail space positioned along Abbotsford’s primary thoroughfare, South Fraser Way, offering excellent visibility to both vehicular and pedestrian traffic, with an average of 21,783 vehicles passing daily. The property is located near the cities major retail node as well as the historic downtown core, an area experiencing significant revitalization, including the Rail District by Infinity Properties – a 600+ unit master-planned community currently under development. This strategic location benefits from strong traffic counts, proximity to established businesses, and the growing vibrancy of Abbotsford’s redeveloped downtown.

## Salient Details

<b>Address:</b>	<b><u>33486 South Fraser Way, Abbotsford, BC</u></b>
<b>PIDs:</b>	011-392-771
<b>Building Size:</b>	Main Floor 1,963 SF Restaurant Space
	Lower Floor 1,963 SF Office & Storage
	<b>Total 3,926 SF</b>
<b>Lot Size:</b>	6,436 SF
<b>Zoning:</b>	<b><u>C3 - Community Commercial Zone</u></b>
<b>Timing/Possession:</b>	<b>Immediate</b>
<b>Asking Rent:</b>	Contact Listing Agents
<b>Est. Additional Rent:</b>	\$7.90/SF (2026 est.)

## Highlights



Positioned along Abbotsford’s primary thoroughfare, South Fraser Way, with strong visibility to both vehicular and pedestrian traffic benefiting from 21,783 vehicles per day



Ample parking located at the side and rear of the property



Situated within a rapidly growing area, just 1km of the Subject Property, this region has experienced a population growth of 15.2% population between 2020 and 2025, and is projected to continue expanding by over 3% from 2025 to 2030.



Located within 1000m from the Sevenoaks retail district; 500m of Infinity Properties’ Rail District, a 600+ unit master-planned community under construction.



## Location Overview

Abbotsford, the largest municipality in the Fraser Valley and the 5th largest in British Columbia, is home to 173,194 residents and is consistently ranked as one of the fastest-growing communities and local economies in Canada. Located just 60 minutes east of Vancouver, the city boasts excellent connectivity, with an international airport and border crossing providing seamless access to both domestic and global markets.

Situated in the heart of the Fraser Valley, Abbotsford is home to key regional economic drivers, including the Abbotsford International Airport, the University of the Fraser Valley, and a diverse range of industries. Its central location, access to major transportation networks, and proximity to both the U.S. and Asia-Pacific ports make it an ideal hub for international companies entering the North American market.

**SUBJECT  
PROPERTY**

ROBERTS AVE

SOUTH FRASER WAY (28,918 VPD)

OLD YALE RD

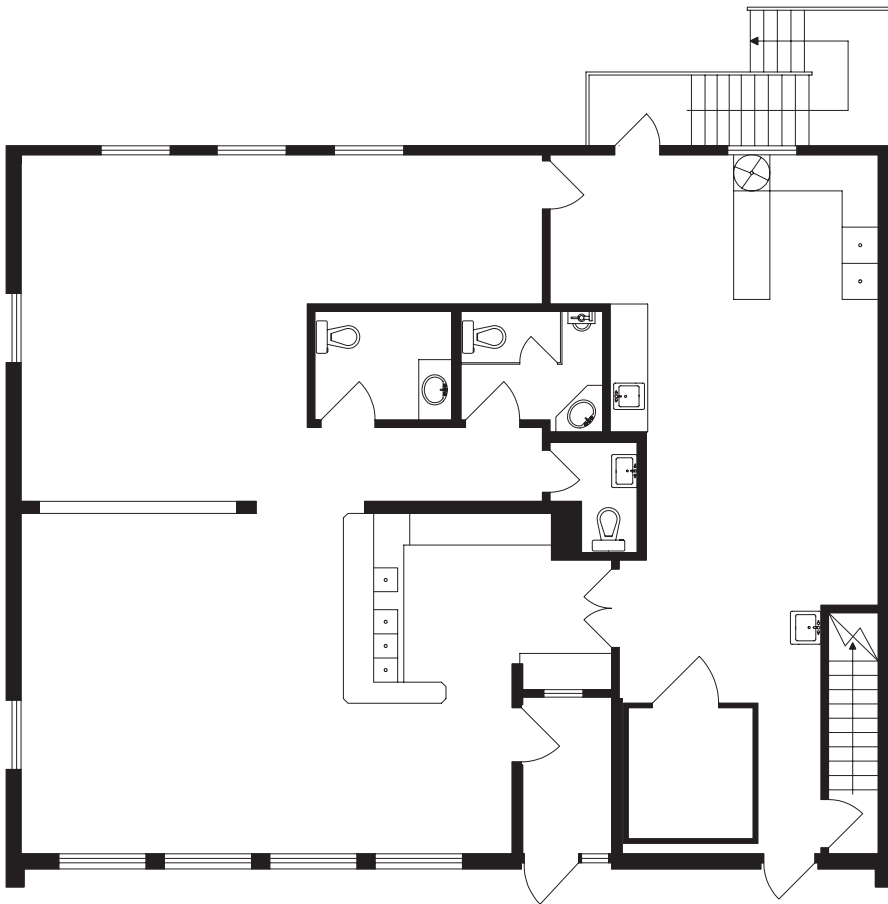
ESSENDENE AVE

GEORGE FERGUSON WAY

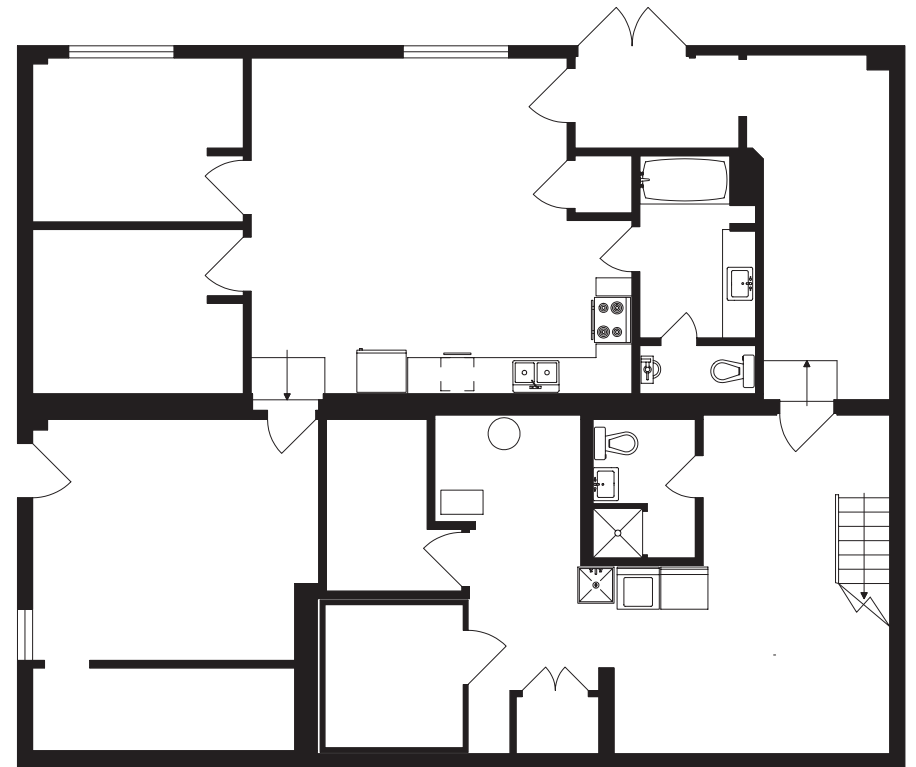
MC CALLUM RD (26,396 VPD)

**33486 SOUTH FRASER WAY, ABBOTSFORD, BC  
FLOOR PLAN**

**TOTAL BUILDING SIZE: 3,926 SF**



**MAIN FLOOR  
1,963 SF**



**LOWER FLOOR  
1,963 SF**

Restaurant Opportunity - Proposed Building Rendering



33486 SOUTH FRASER WAY, ABBOTSFORD, BC

# Marcus & Millichap



## ML PLAZA



THE RAIL DISTRICT BY INFINITY HOMES  
600+ UNITS MASTERPLANNED COMMUNITY

SOUTH FRASER WAY (28,918 VPD)



SUBJECT PROPERTY

## DOWNTOWN ABBOTSFORD

2025 Demographics	5-min radius	10-min radius
Total Population	52,902	140,257
% Population Change (2025-2030)	4.7%	5.3%
Households	20,102	45,764
Avg. Household Income	\$97,620	\$121,525
Avg. Household Food Spending	\$76M	\$193M

## SEVENOAKS SHOPPING CENTRE



## MILL LAKE PARK

## ABBOTSFORD SENIOR SECONDARY SCHOOL

MCCALLUM RD (26,396 VPD)

## MCCALLUM CENTRE



HIGHWAY 11

## ABBOTSFORD REGIONAL HOSPITAL

## NOFRILLS



ABBOTSFORD INTERNATIONAL AIRPORT  
DRIVE TIME : 15 MIN

TRANS CANADA HIGHWAY

## MCCALLUM JUNCTION



## MCDONALD'S

## Walmart

# Marcus & Millichap

## Stefan Safrata

Personal Real Estate Corporation  
Director, Investments & Leasing  
(604) 398-4352  
Stefan.Safrata@MarcusMillichap.com

## Joey Yoo

Personal Real Estate Corporation  
Director, Investment Sales  
(604) 675-5236  
Joey.Yoo@MarcusMillichap.com

## Marcus & Millichap

1100 - 1111 West Georgia Street  
Vancouver, BC V6E 4M3  
(604) 638-2121



The information contained in this Marketing Brochure is proprietary and strictly confidential. It is intended to be reviewed only by the party receiving it from Marcus & Millichap and should not be made available to any other person or entity without the written consent of Marcus & Millichap. This Marketing Brochure has been prepared to provide summary, unverified information to prospective purchasers, and to establish only a preliminary level of interest in the subject property. The information contained herein is not a substitute for a thorough due diligence investigation. Marcus & Millichap has not made any investigation, and makes no warranty or representation, with respect to the income or expenses for the subject property, the future projected financial performance of the property, the size and square footage of the property and improvements, the presence or absence of contaminating substances, PCB's or asbestos, the compliance with State and Federal regulations, the physical condition of the improvements thereon, or the financial condition or business prospects of any tenant, or any tenant's plans or intentions to continue its occupancy of the subject property. The information contained in this Marketing Brochure has been obtained from sources we believe to be reliable; however, Marcus & Millichap has not verified, and will not verify, any of the information contained herein, nor has Marcus & Millichap conducted any investigation regarding these matters and makes no warranty or representation whatsoever regarding the accuracy or completeness of the information provided. All potential buyers must take appropriate measures to verify all of the information set forth herein.

Marcus & Millichap is not affiliated with, sponsored by, or endorsed by any commercial tenant or lessee identified in this marketing package. The presence of any corporation's logo or name is not intended to indicate or imply affiliation with, or sponsorship or endorsement by, said corporation of Marcus & Millichap, its affiliates or subsidiaries, or any agent, product, service, or commercial listing of Marcus & Millichap, and is solely included for the purpose of providing tenant lessee information about this listing to prospective customers.

This information has been secured from sources we believe to be reliable, but we make no representations or warranties, express or implied, as to the accuracy of the information. References to square footage or age are approximate. Buyer must verify the information and bears all risk for any inaccuracies. Marcus & Millichap is a trademark of Marcus & Millichap Real Estate Investment Services, Inc. Used under license by Marcus & Millichap Real Estate Investment Services Canada Inc. © 2026 Marcus & Millichap. All rights reserved.