



# For Sale

*105 F Scr 25 | Taylorsville, MS*

+/-282,400 SF

**Listing Price: \$5.6M**

## Property Specifications

- Former particle board manufacturing facility
- All utilities available
- Site is +/- 45 acres
- Steam available from GP Boiler
- Rail proximity to Ports of Mobile and Gulfport
- Fire protection loop with GP Complex
- Rail served building (CN) - Currently with 3 switches a day
- Truck complex scales with GP Plywood
- Regional fiber availability supported an average manufacturing process of 4,000 BDT's per week



**Allen Garstecki**  
*Executive Vice President*  
allen.garstecki@jll.com  
+1 251 301 7369

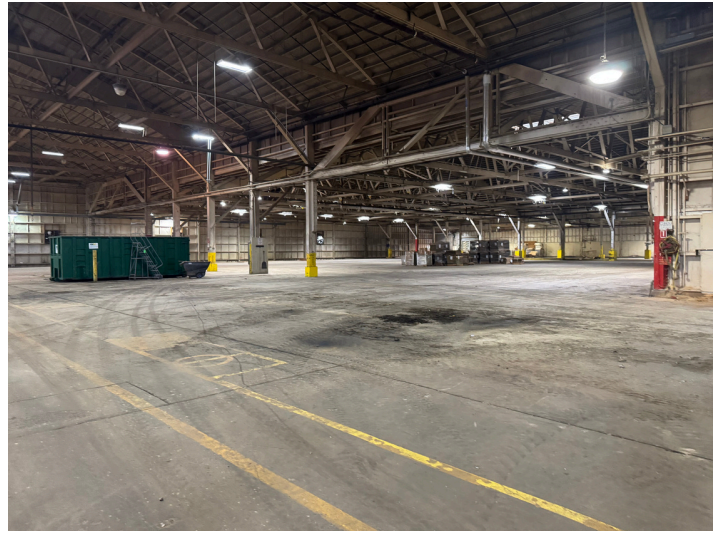
**Myers McGarry**  
*Vice President*  
myers.mcgarry@jll.com  
+1 704 560 6205

**Buff Teague**  
*Executive Managing Director*  
buff.teague@jll.com  
+1 251 341 1611

jll.com

Jones Lang LaSalle Americas, Inc. 12.12.2025

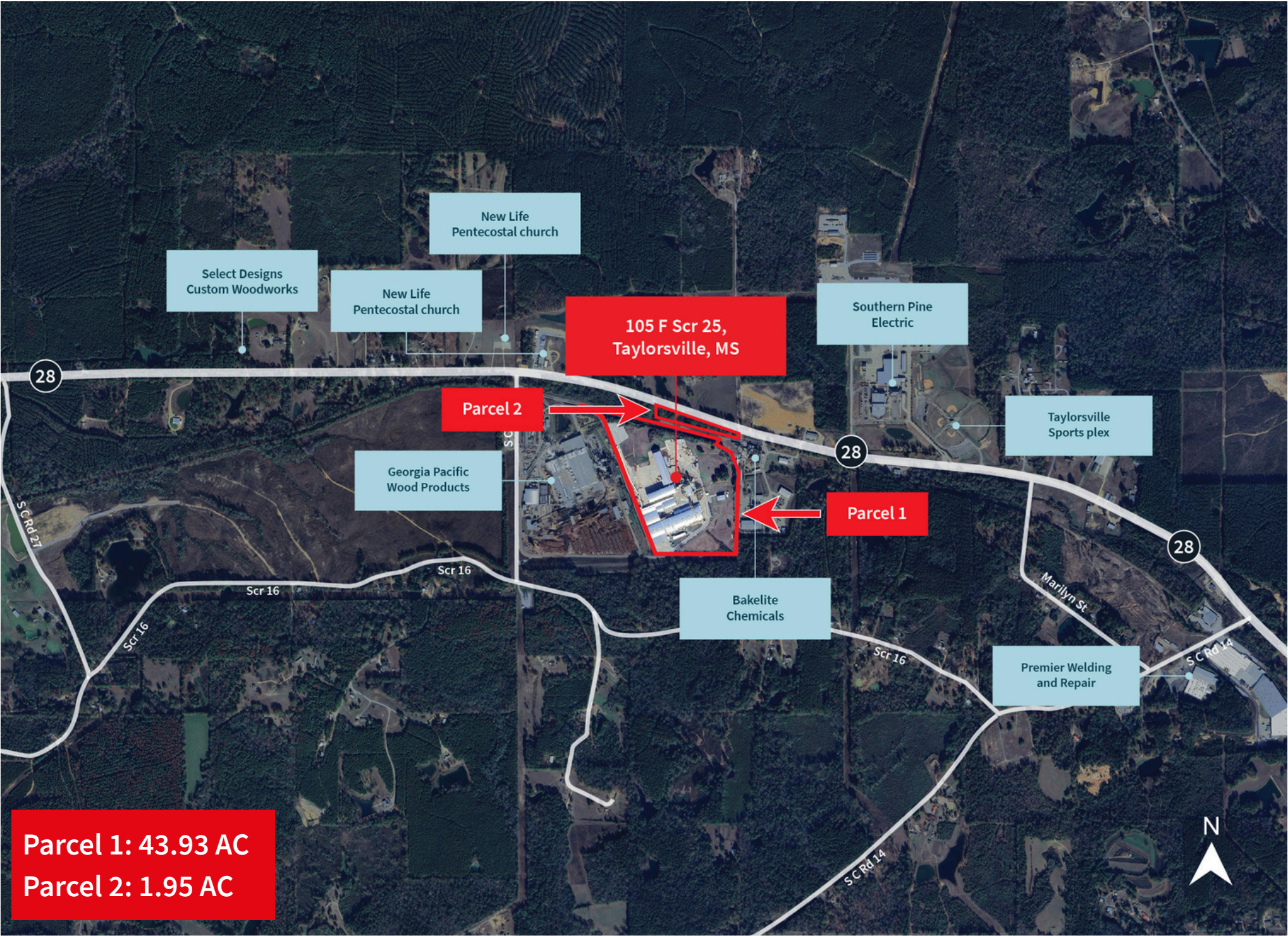
# Property Images



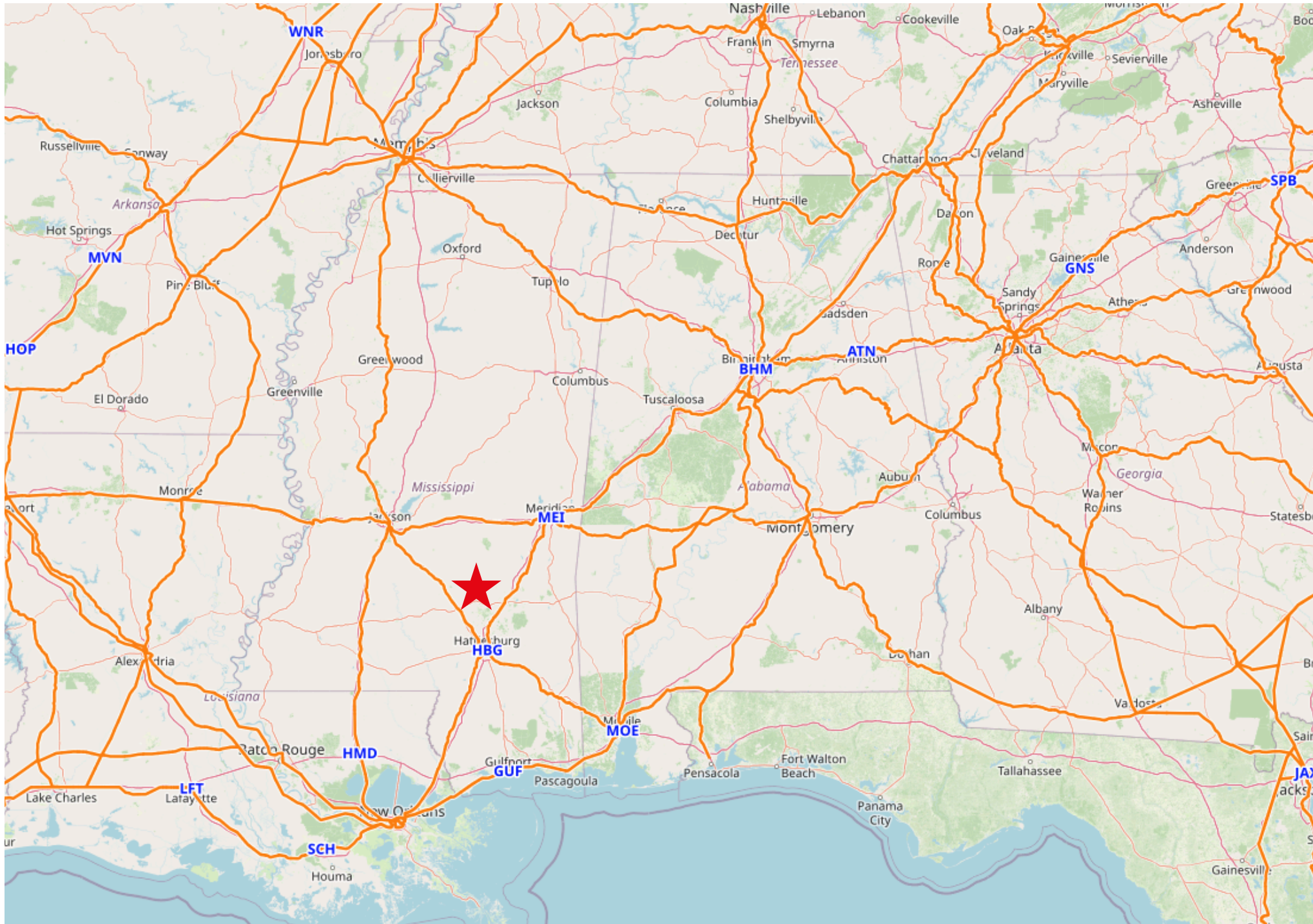
# Property Images



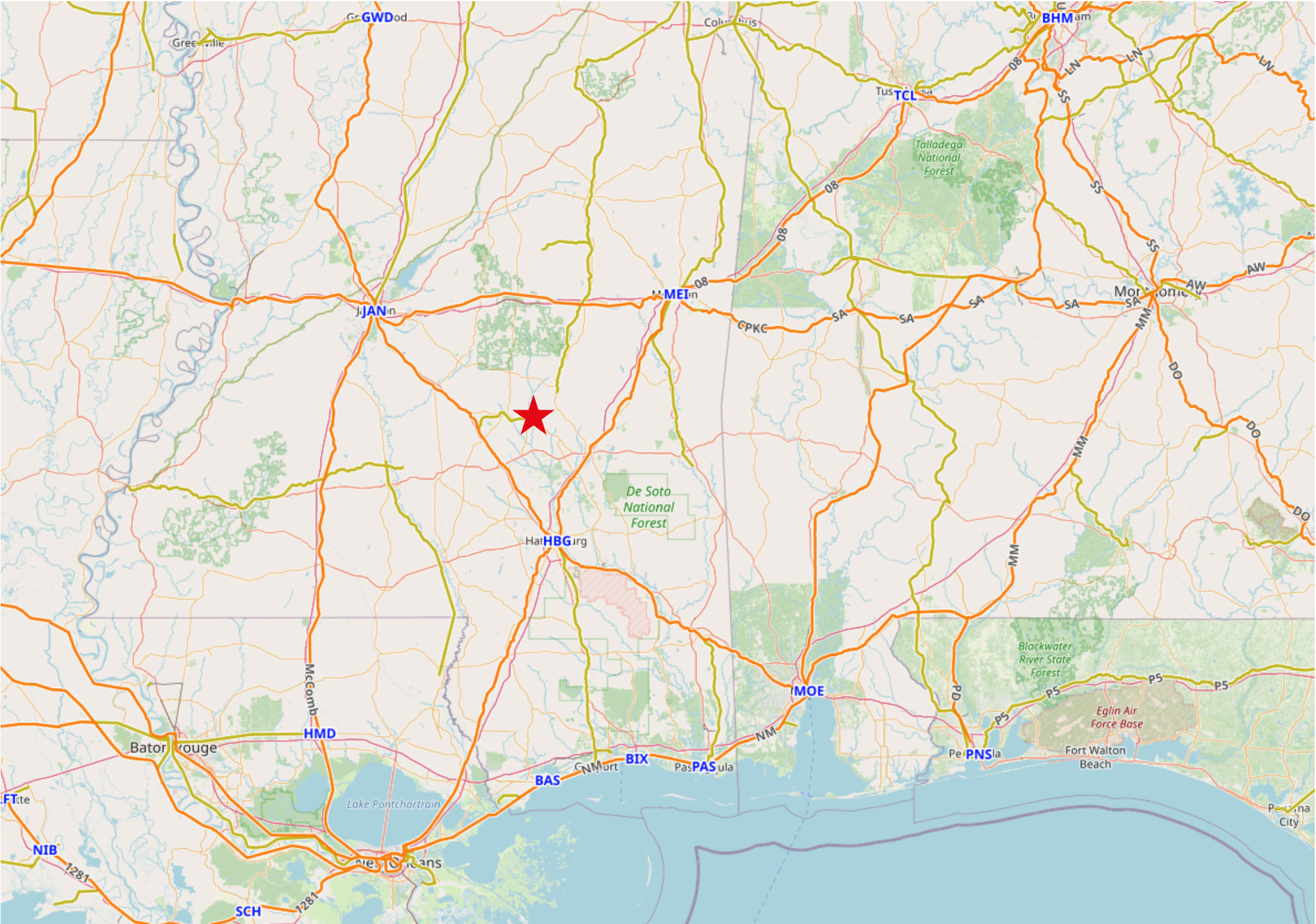
# Area Map



# Regional Rail Access



# Regional Rail Access



# Regional Rail Access

