

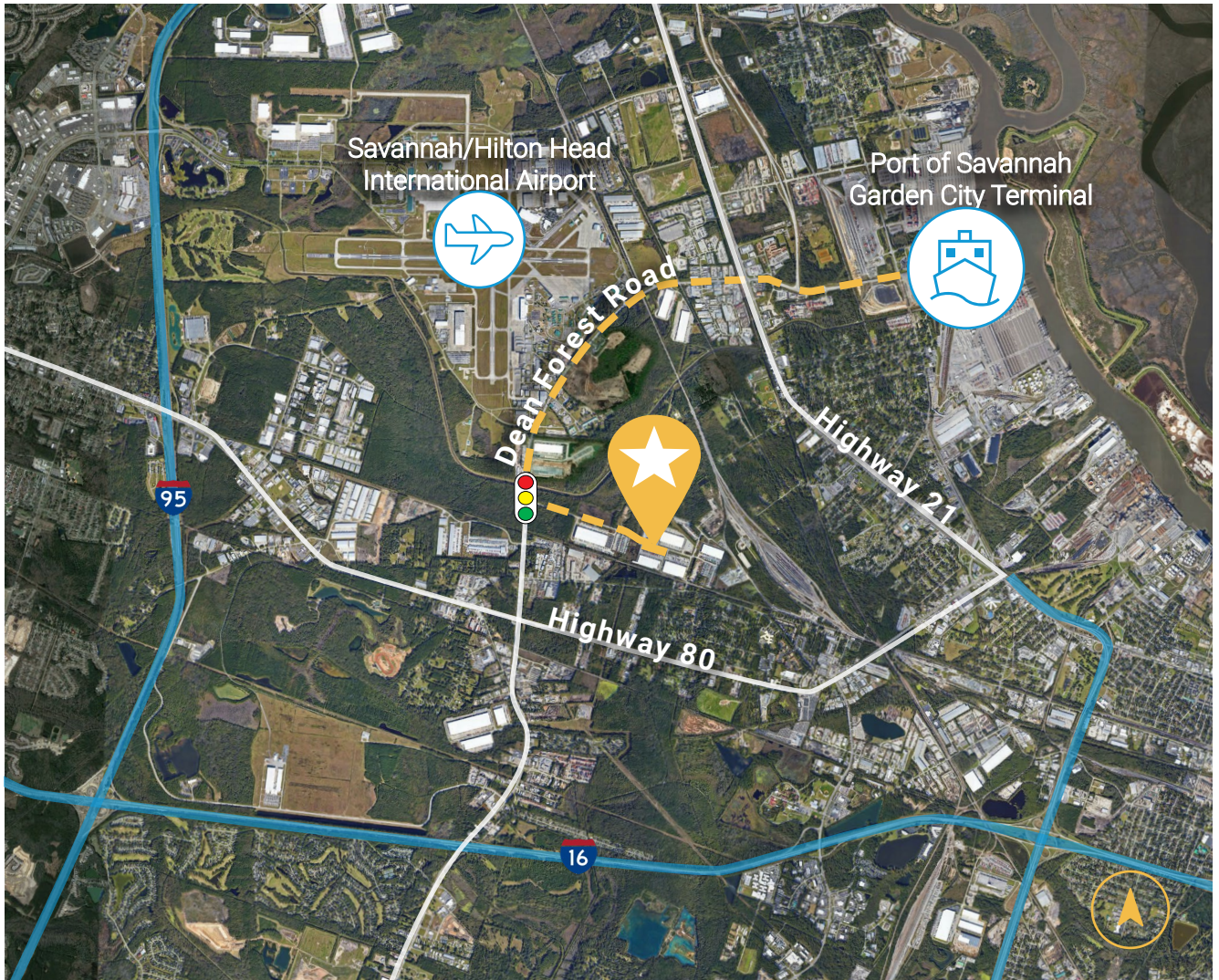
## Trailer Yard For Lease

CenterPoint Intermodal Center | 42 Sonny Perdue Drive, Savannah, GA



CenterPoint Intermodal Center | 42 Sonny Perdue Drive, Savannah, GA

THE PROPERTY



## CenterPoint Intermodal Center Trailer Yard within 4.5 Miles of the Port

### Property Highlights

- + ±4.13 AC rocked trailer yard
- + Secured yard
- + Office trailer utility hookups (Office trailer Tenant responsibility)
- + Zoned Heavy Industrial
- + Only 4.5 miles from the Port of Savannah, 3.8 miles from Interstate 16 and 5 miles from Interstate 95
- + Available 1Q 2024

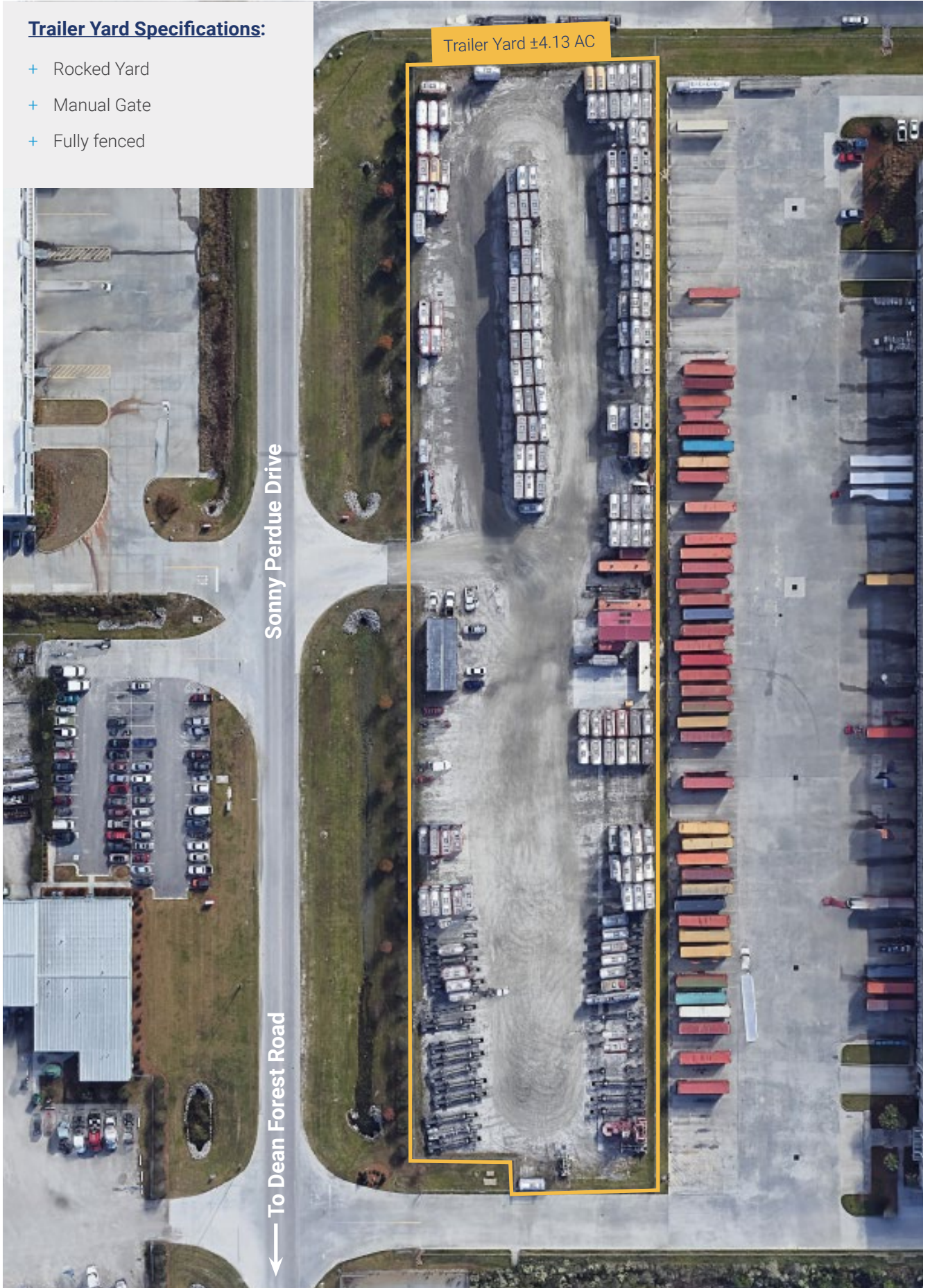
## Trailer Yard For Lease

CenterPoint Intermodal Center | 42 Sonny Perdue Drive, Savannah, GA



### Trailer Yard Specifications:

- + Rocked Yard
- + Manual Gate
- + Fully fenced



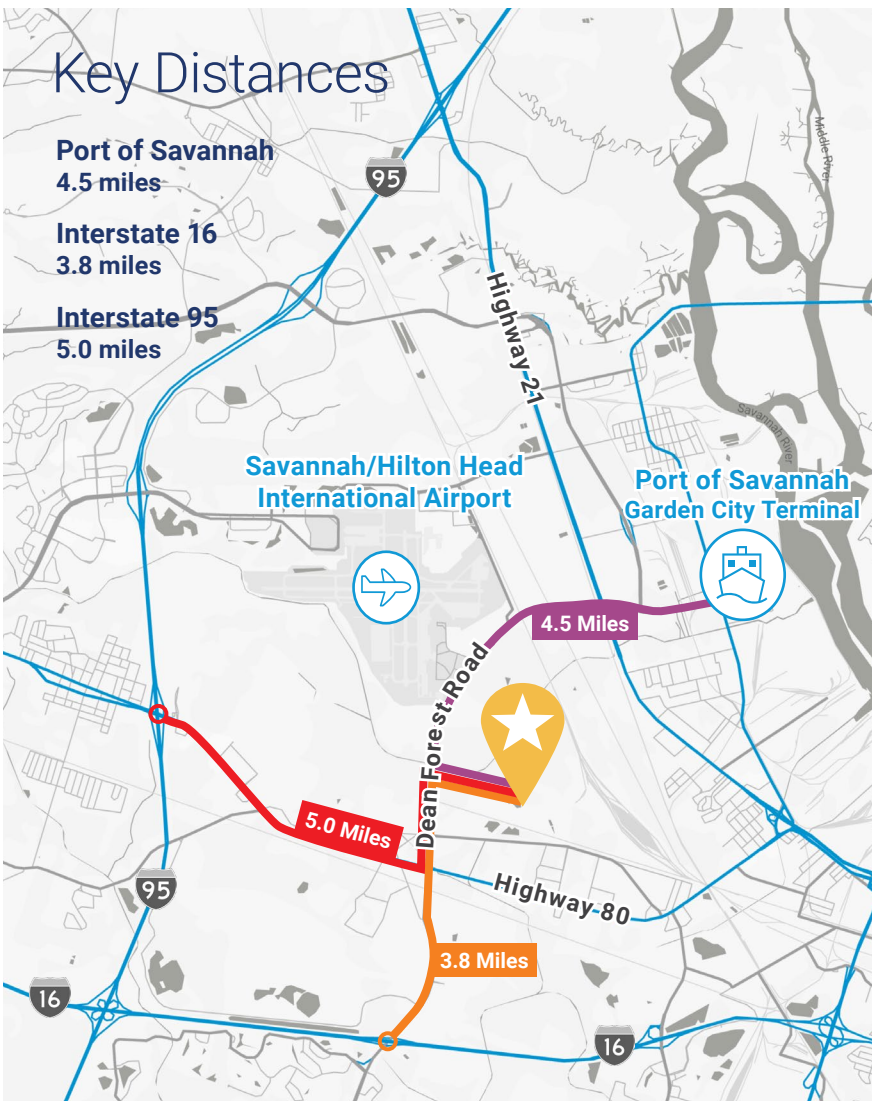
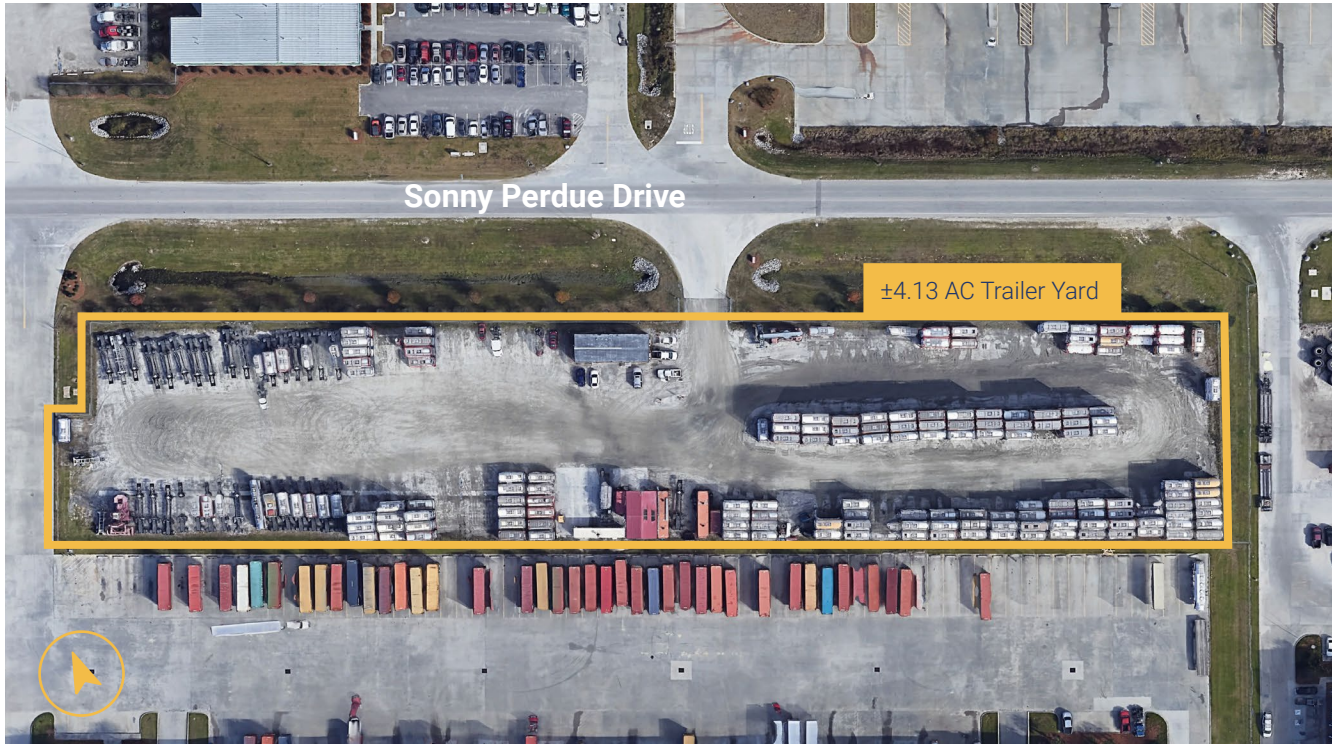
# Trailer Yard For Lease

CenterPoint Intermodal Center | 42 Sonny Perdue Drive, Savannah, GA



CenterPoint Intermodal Center | 42 Sonny Perdue Drive, Savannah, GA

THE LOCATION



Danny Chase, SIOR  
912.604.4918  
danny.chase@colliers.com



David Nenner  
Senior Vice President - Asset Management  
dnenner@centerpoint.com

[centerpoint.com](http://centerpoint.com)