
1005 - 5th Avenue NW, Issaquah, WA 98027

6,845 SF BUILDING FOR SALE
Owner/User or Investment Opportunity



NEWMARK

Alex Wheatley *Director* | t 425-941-3003 | alex.wheatley@nmrk.com

1005 - 5TH AVENUE NW, ISSAQUAH, WA 98027








The Offering

Newmark is pleased to present the property located at 1005 5th Avenue NW in Issaquah for purchase. The property is comprised of a 6,845 SF building currently built-out as a montessori school on a 0.35 acre lot. Asking rate is \$5 million.



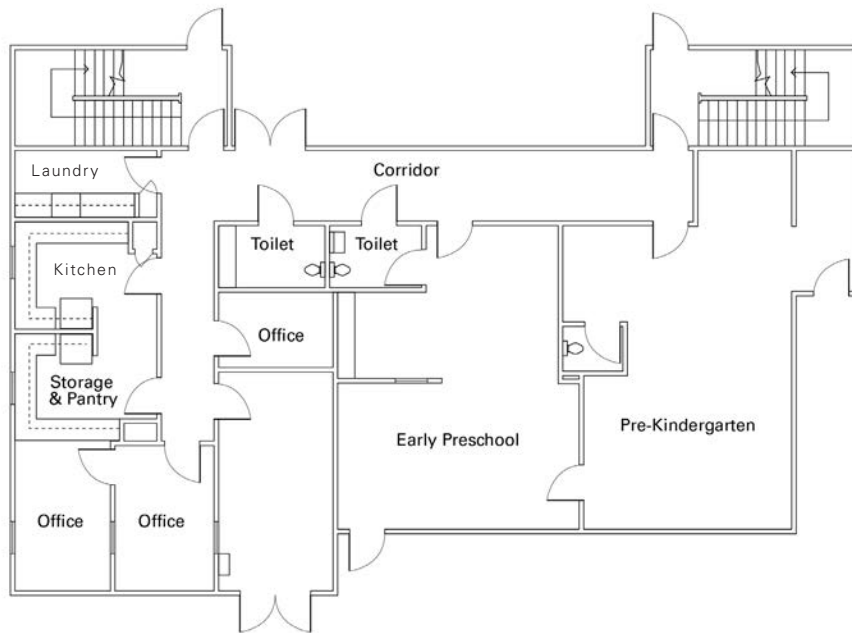
1005 - 5TH AVENUE NW, ISSAQUAH, WA 98027

Building Details

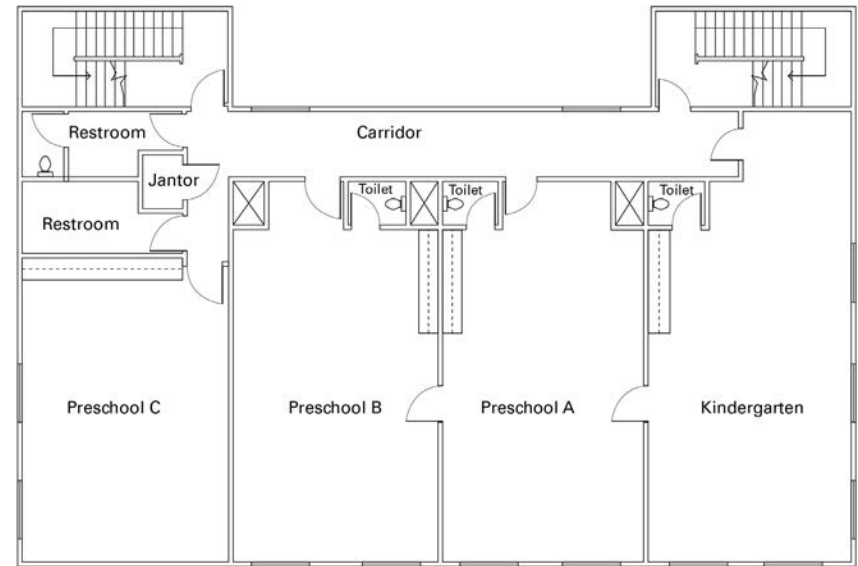
-  Recently updated outdoor play area
-  Move-in ready montessori school with supplies available
-  Central Issaquah location
-  Licensed for 91 students
-  Built in 1978; Remodeled in 2000
-  New siding: 2023
-  New roof: 2015



LOWER LEVEL



UPPER LEVEL



1ST FLOOR

- Main entry
- 3 Offices
- 2 Classrooms with private bathrooms
- Common area restroom
- Laundry Room, Pantry and Kitchen

2ND FLOOR

- 4 Classrooms (3 with private bathrooms)
- Common area restrooms

1005 - 5TH AVENUE NW, ISSAQUAH, WA 98027

Interior & Play Area Photos



1005 - 5TH AVENUE NW, ISSAQUAH, WA 98027



1005 - 5th Avenue NW Issaquah, WA 98027

For more information contact:

Alex Wheatley

Director

t 425-941-3003

alex.wheatley@nmrk.com

The distributor of this communication is performing acts for which a real estate license is required. The information contained herein has been obtained from sources deemed reliable but has not been verified and no guarantee, warranty or representation, either express or implied, is made with respect to such information. Terms of sale or lease and availability are subject to change or withdrawal without notice. 18-1023

NEWMARK