



LEASE

+/-2,000 SF Rangeline Road Retail Space

1121 SOUTH RANGELINE ROAD

Carmel, IN 46032

PRESENTED BY:

**JESS LAWHEAD, SIOR, CCIM,
CBI**

Phone: 317.447.4403

jess.lawhead@svn.com

IN #RB14047741

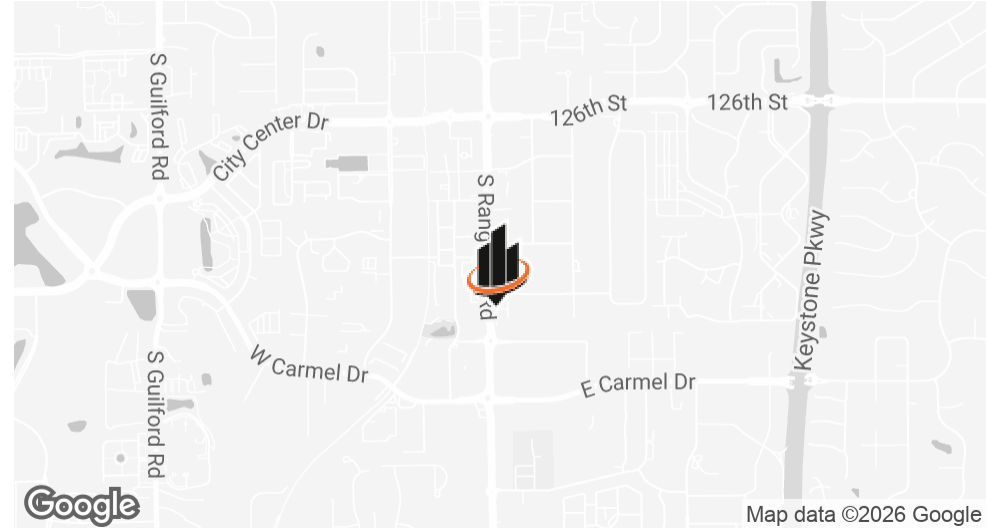
COREY FRASIER

Phone: 574.261.3651

corey.frasier@svn.com

IN #RB18001405

PROPERTY SUMMARY



OFFERING SUMMARY

LEASE RATE:	\$25 SF/yr (NNN)
AVAILABLE SF:	2,000 SF
LOT SIZE:	1.68 Acres
BUILDING SIZE:	8,000 SF

PROPERTY HIGHLIGHTS

- Located on Rangeline Road with direct frontage and visibility
- B-3 Zoning
- Existing street-facing signage
- 66 total parking spaces, including 21 in front and 12 in back of the building
- On-site self-storage
- Adjacent to The Proscenium and Proscenium II developments
- Ideal for retail, medical, or office tenants
- Prime location in a high-growth area of Carmel, IN

JESS LAWHEAD, SIOR, CCIM, CBI

O: 317.447.4403

jess.lawhead@svn.com

IN #RB14047741

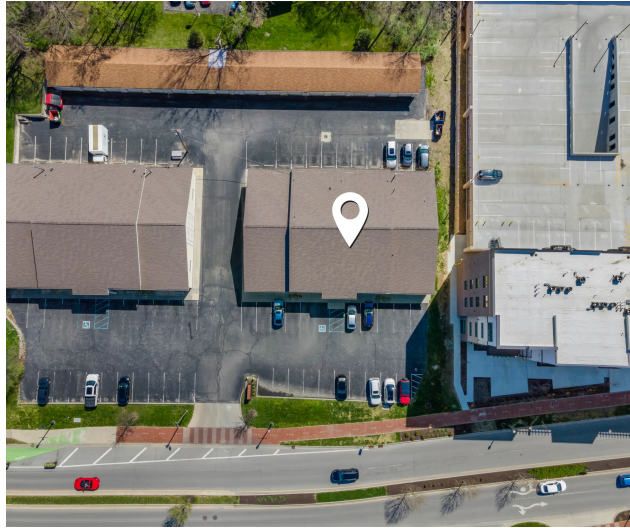
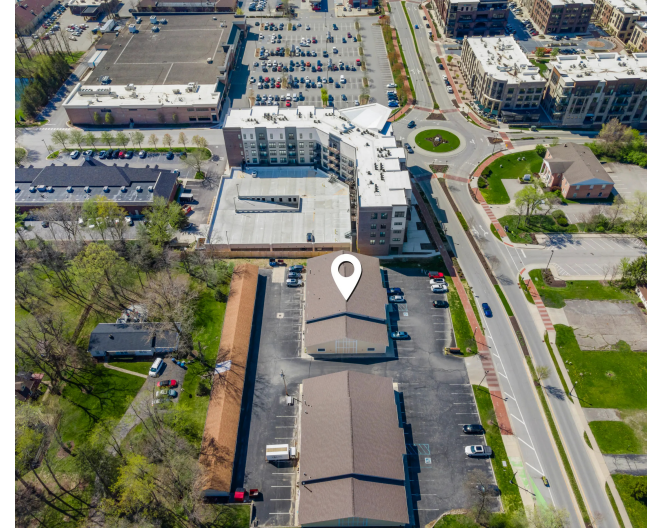
COREY FRASIER

O: 574.261.3651

corey.frasier@svn.com

IN #RB18001405

ADDITIONAL PHOTOS



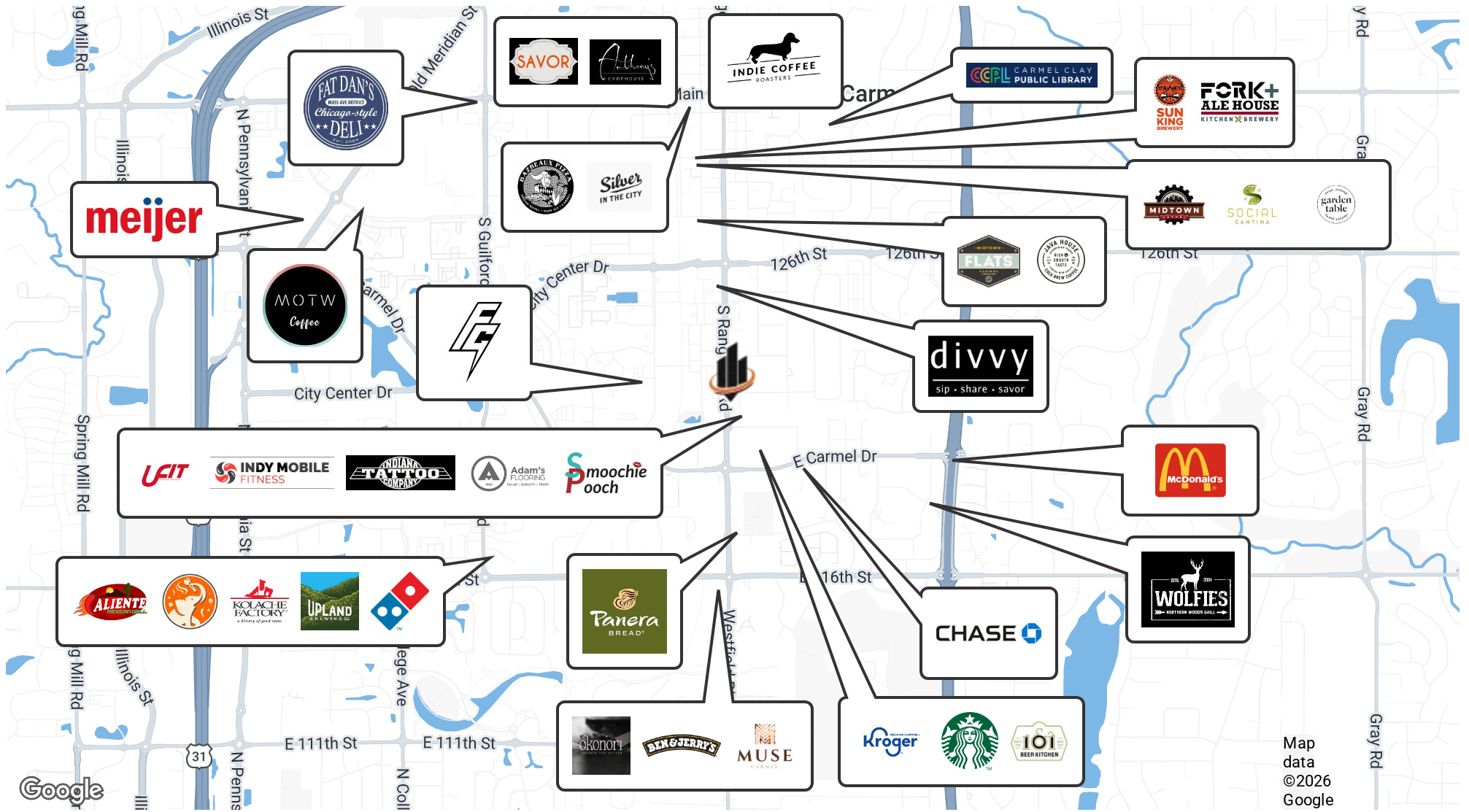
JESS LAWHEAD, SIOR, CCIM, CBI
O: 317.447.4403
jess.lawhead@svn.com
IN #RB14047741

COREY FRASIER
O: 574.261.3651
corey.frasier@svn.com
IN #RB18001405

+/-2,000 SF RANGELINE ROAD RETAIL SPACE | 1121 South Rangeline Road Carmel, IN 46032

SVN | NORTHERN COMMERCIAL 3

RETAILER MAP

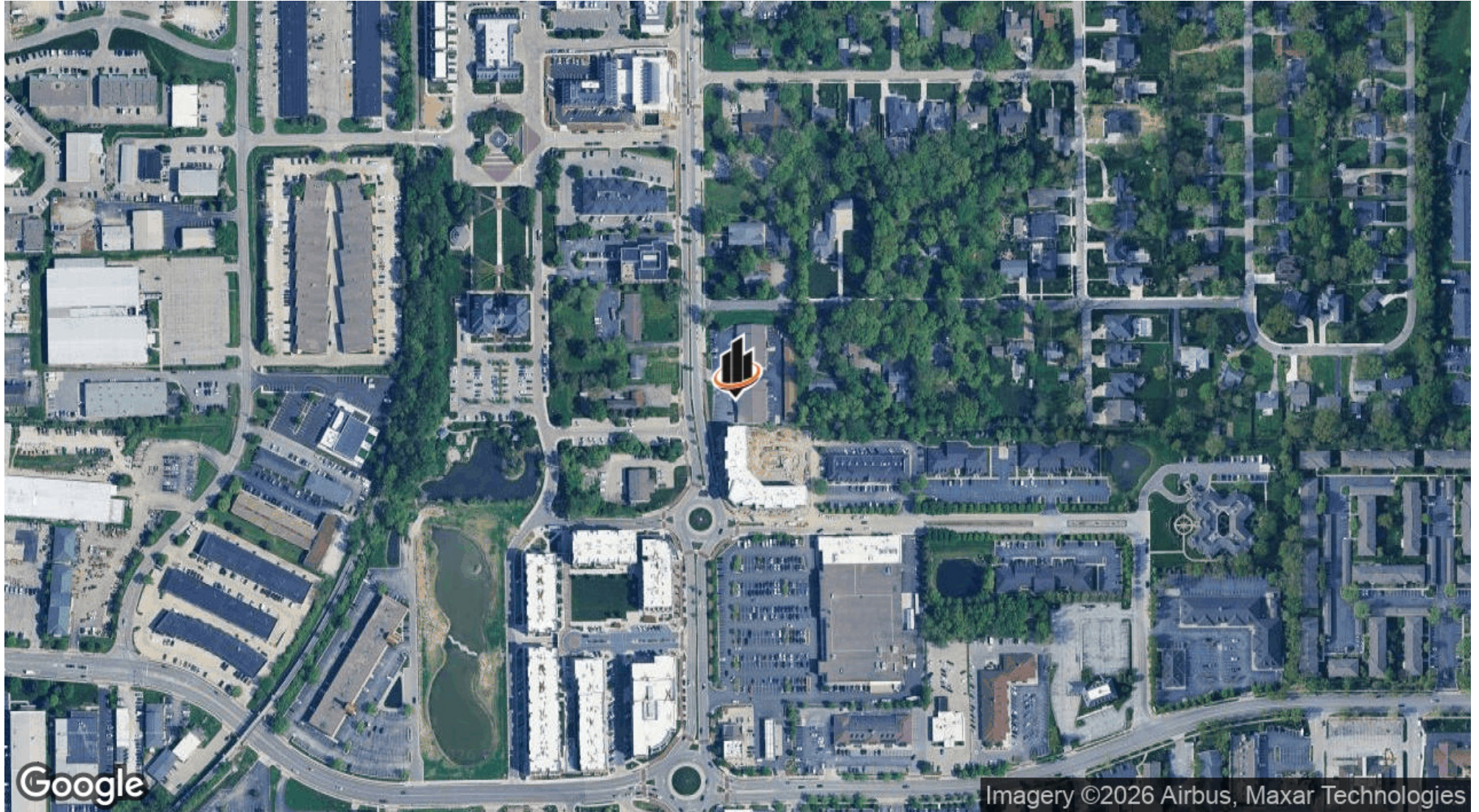


Map data ©2026 Google

JESS LAWHEAD, SIOR, CCIM, CBI
 O: 317.447.4403
 jess.lawhead@svn.com
 IN #RB14047741

COREY FRASIER
 O: 574.261.3651
 corey.frasier@svn.com
 IN #RB18001405

LOCATION MAP



JESS LAWHEAD, SIOR, CCIM, CBI
O: 317.447.4403
jess.lawhead@svn.com
IN #RB14047741

COREY FRASIER
O: 574.261.3651
corey.frasier@svn.com
IN #RB18001405