



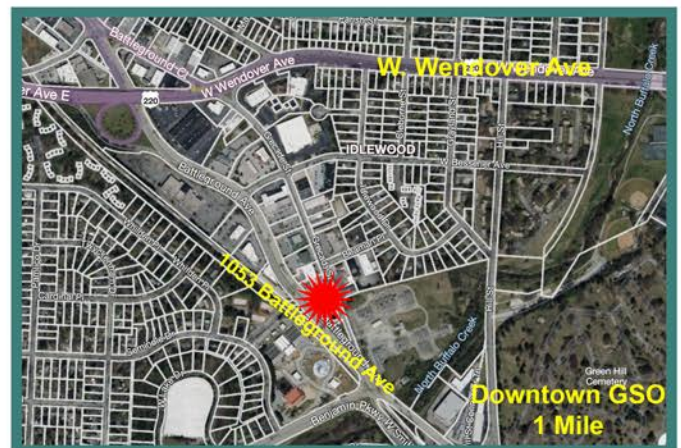
SIMPSON
— COMMERCIAL REAL ESTATE —

AVAILABLE FOR LEASE Or SALE

1051 Greccade Street Greensboro, NC



- Great Midtown Location
- 1 Mile from Downtown Greensboro
- Less than 2 Miles to Cone & Wesley Long Hospitals
- Great exposure to Battleground Ave/Hwy 220 North
- 26 Newly Paved Parking Spots
- Street Parking Available
- Full Building approximately 7066 +/- Square Feet
- Landlord willing to subdivide
- New Roof installed Summer 2023
- Perfect for Office, Bar, Dining, Retail or Medical



Asking Lease Rate \$16 sf NNN

Sale Price \$1,395,00

Please Contact: Charles Wright
336-209-1622
charles@simpsoncre.com



1401 Sunset Drive, Suite B
Greensboro, NC 27408
336.543.0849
www.simpsoncre.com