

FOR LEASE

STEPHANIE FARMER +1 479 845 3022 | sfarmer@sagepartners.com

MARSHALL SAVIERS +1 479 845 3042 | mtsaviors@sagepartners.com

CURVE

CORPORATE
CENTER

A PREMIER CORPORATE DESTINATION IN BENTONVILLE



**CUSHMAN &
WAKEFIELD**

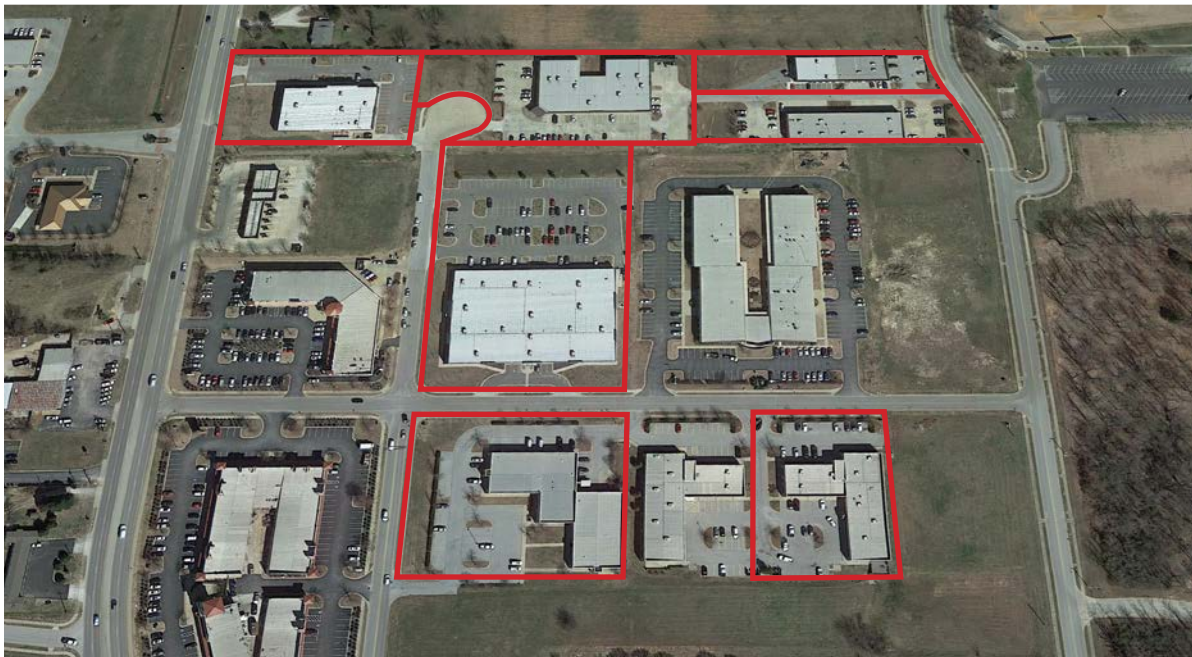
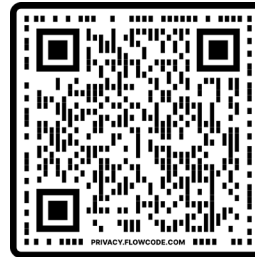


5100 W JB Hunt Drive, Rogers, AR 72758 | 479 845 3000 | Independently Owned and Operated / A Member of the Cushman & Wakefield Alliance

ABOUT US

Curve Corporate Center is a seven-building office park in Bentonville, minutes from the new Walmart Home Office and Sam's Club HQ. Set in the Fayetteville-Springdale-Rogers metro, it is home to tenants like Exxon, Spectrum Brands, Coleman (Newell), and Silliker (Merieux). The property features flexible suites, modern layouts, and abundant natural light with easy access to I-49.

Turnkey spaces include open designs, private offices, conference areas, and outdoor seating. Select suites also offer kitchens with commercial vent hoods, creating a ready-to-use environment for businesses to thrive in Northwest Arkansas.



62,055
POPULATION

2.4
AVERAGE HOUSEHOLD SIZE

34.2
MEDIAN AGE

\$102,767
MEDIAN HOUSEHOLD INCOME

3,190
TOTAL BUSINESSES

71,516
TOTAL EMPLOYEES

3 MILE RADIUS ESRI BUSINESS ANALYST



CURVE COPORATE CENTER

TENANTS



CORE STATES

GROUP

ExxonMobil

GRATSY 



Mérieux
NutriSciences

Better Food. Better Health. Better World.



SOO
CHURCH

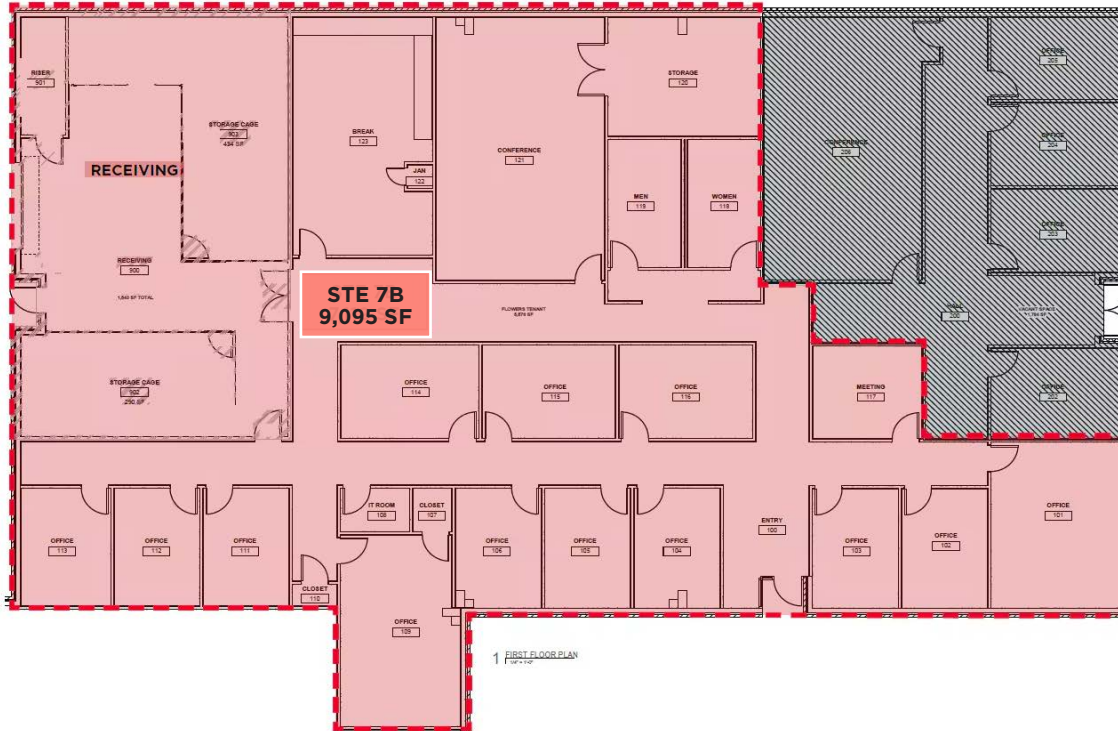
Spectrum
Brands

DRIVE TIMES

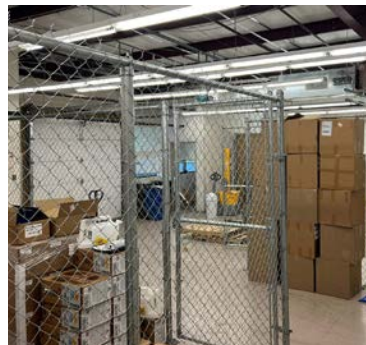
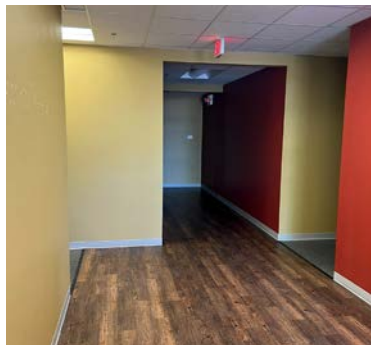
- 5 Miles to Walmart Global HQ
- 3 Miles to Sam's Club Home Office
- Less than 2 Miles to I-49
- 1 Mile to Bentonville Municipal Airport
- Many restaurants within 3 Mile radius



AVAILABLE SPACES



*floor plan depicted is estimated and may vary from actual conditions



3401 SE MACY RD

- 9,095 ± SF available
- Lease Rate: \$22.00/RSF NNN
- Walton signage opportunity
- Roll up door & Shipping receiving area
- Less than 2 miles from I-49
- Located near SAM'S Club Headquarters and Walmart Home Office



AVAILABLE SPACES



*floor plan depicted is estimated and may vary from actual conditions

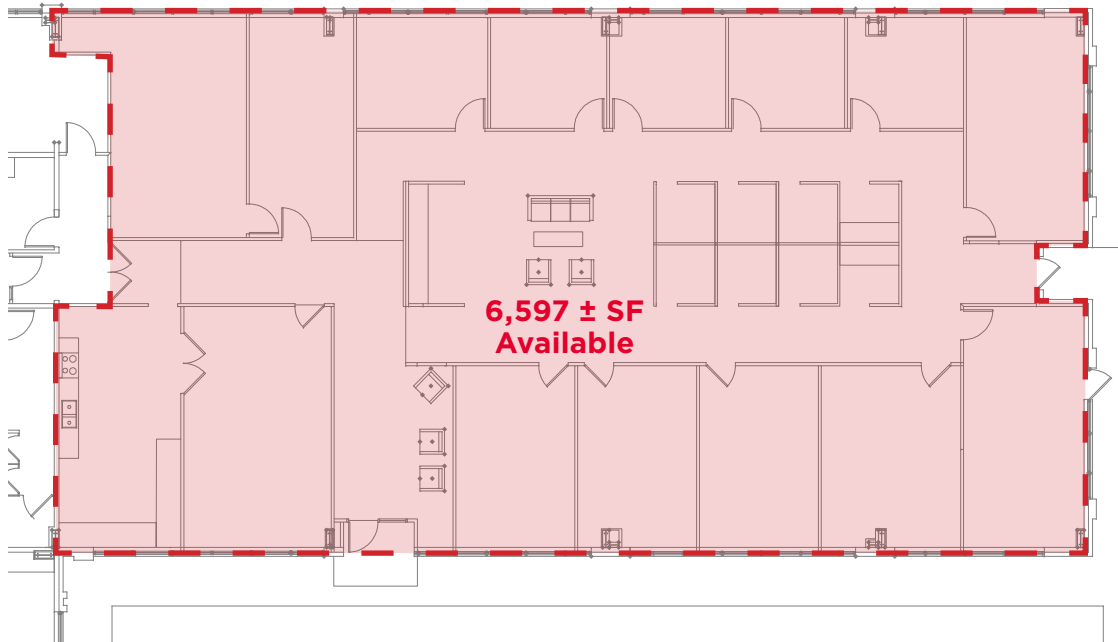
3101 SE MACY RD

- Bentonville office space
- **7,788 ± SF available**
- Lease Rate: **\$22.00/SF NNN**
- Access to shared outdoor space
- Open concept with private offices, conference areas, and break room
- Less than 2 miles from I-49
- Located near SAM'S Club Headquarters and Walmart Home Office

Coming soon



AVAILABLE SPACES



*floor plan depicted is estimated and may vary from actual conditions



212 SE 34TH ST

- Suite 12: **6,597 ± SF**
(Available 11/01/2025)
- Lease Rate: **\$22.00 RSF NNN**
- Suite offers a kitchen with a commercial vent hood
- Direct access to outdoor patio/seating area
- Open concept with private offices, conference areas, and ample natural light



NORTHWEST ARKANSAS - MOUNTAIN HAVEN WITH INDUSTRY GIANTS

The Fayetteville-Bentonville-Rogers-Springdale MSA, commonly referred to as Northwest Arkansas, is made up of 3 counties, Benton, Washington, and Madison. The region is home to the world's largest retailer, and #1 on the 2023 Fortune 500 list, Walmart. The MSA is experiencing rapid growth. Northwest Arkansas is the fastest growing multifamily market, by percentage, in the US. The metro is on pace to break into the nation's top 100 largest MSA's with 1M+ residents expected by 2040.



576,403

MSA Population 2023

2.5%

Unemployment Rate 2023

93%

Cost Of Business Index

91.8%

Cost Of Living Index

Source: Northwest Arkansas Council 2024

Northwest Arkansas is...

Booming

36 people moving to
NWA per day

#40 Best Places For Business

Forbes - 2023

#10 Best Place to Live in the U.S.

U.S. News & World Report - 2023

Dynamic

U.S. News & World Report's #28
Most Dynamic Metros

University of Arkansas Supply Chain Ranked #1 In The Nation

Northwest Arkansas Council - 2024

8 NWA High Schools Rank Among Top 10% In The Nation

Northwest Arkansas Council - 2024

Up-Scale

Per capita income 14% higher
than the national average

Home to 3 Fortune 500 Companies

Northwest Arkansas Council - 2024

#7 Best Performing Cities

Milken Institute - 2024

WALMART - #1 CORPORATION IN US

Since its inception, Walmart has maintained its constant presence at its headquarters in Bentonville with multiple corporate expansions and countless philanthropic efforts. The Walton family still calls Bentonville home and has invested hundreds of millions of dollars into school, arts, infrastructure, and various community projects through the Walton Family Foundation.



300+ Acre

New Corporate Campus

14,000 2 Miles

Corporate jobs in
Bentonville

New Corporate Campus
from town square

P&G

Kellogg's



Kraft Heinz

Walmart

Walmart Supplier Network

All 5,500 Walmart suppliers have a presence in NW Arkansas, and 1,400 maintain offices in NW Arkansas contributing thousands of additional jobs to the local economy.



Kimberly-Clark

Johnson & Johnson

AMENITY RICH REGION

In addition to being the home of three Fortune 500 companies (Walmart, Tyson, J.B. Hunt), Northwest Arkansas is filled with community amenities that make the region an exceptional place to call home.

1 CRYSTAL BRIDGES MUSEUM

4.7M Visitors in Eight Years

2 WALMART CORPORATE CAMPUS

300+ Acre New Corporate Development

3 PINNACLE HILLS

152 Acre, Class "A" Shopping Center

4 WALMART AMP

Newly Expanded 15,000-Seat Amphitheater

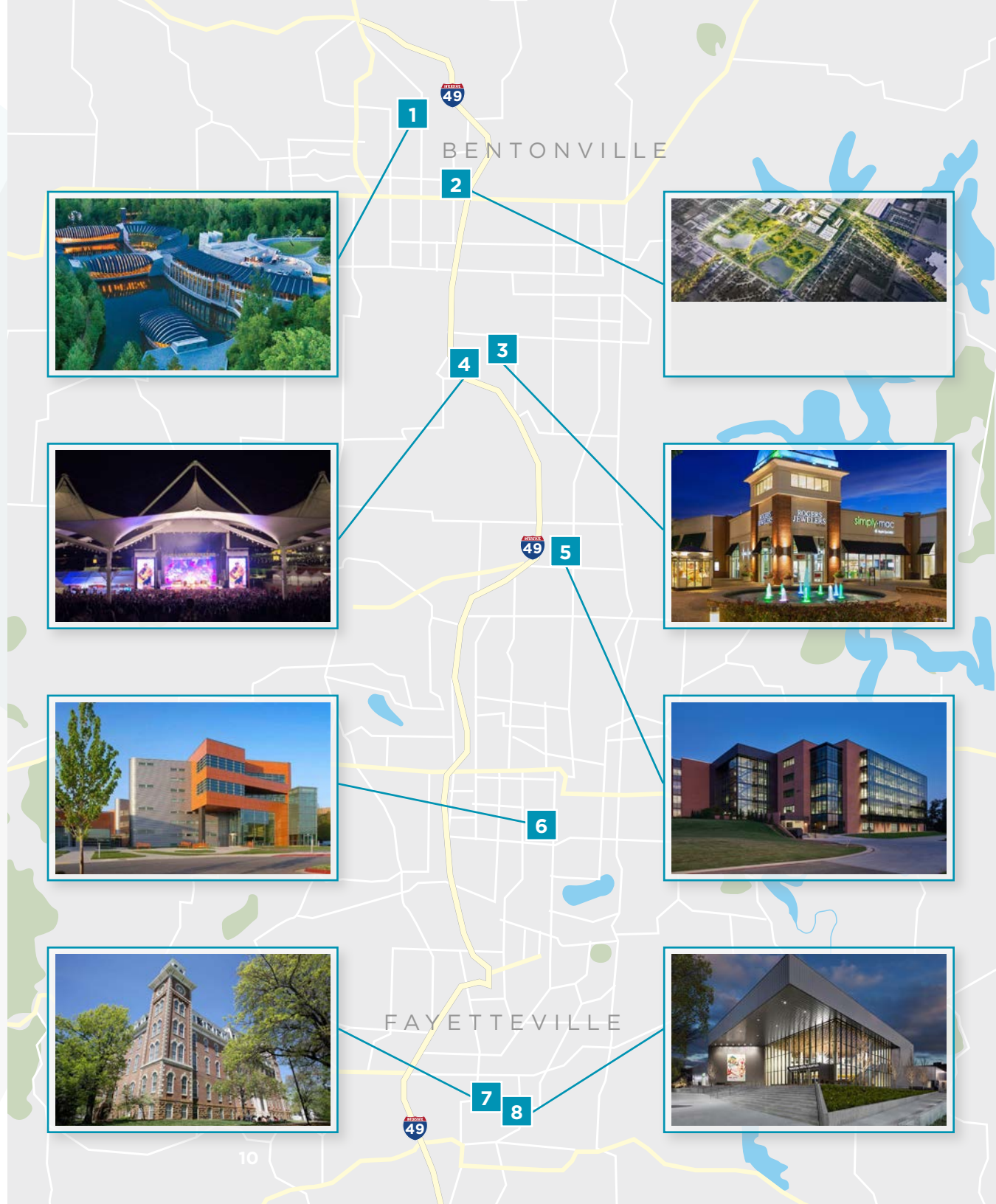
5 JB HUNT CORPORATE HQ

6 TYSON FOODS CORPORATE HQ

7 UNIVERSITY OF ARKANSAS

32,000+ Combined Jobs & Students

8 WALTON ARTS CENTER



FOR LEASE

CURVE

CORPORATE
CENTER

FOR MORE INFORMATION, PLEASE CONTACT:

STEPHANIE FARMER
+1 479 845 3022
sfarmer@sagepartners.com

MARSHALL SAVIERS
+1 479 845 3042
mtsaviors@sagepartners.com



**CUSHMAN &
WAKEFIELD**



©2025 Cushman & Wakefield | Sage Partners. All rights reserved. This presentation is for informational purposes only. Any use, reproduction, or redistribution of its contents is prohibited without prior written consent from Cushman & Wakefield | Sage Partners. The views expressed herein are those of the author and do not necessarily reflect those of Cushman & Wakefield. This presentation is not intended as the basis for any offer or inducement to enter into a contract. While reasonable efforts have been made to ensure the accuracy of the information, including floor plan measurements, the floor plan depicted is estimated and may vary from actual conditions. NO WARRANTY, EXPRESS OR IMPLIED, IS MADE REGARDING THE ACCURACY OF THE INFORMATION, AND CUSHMAN & WAKEFIELD | SAGE PARTNERS IS NOT OBLIGATED TO CORRECT ANY ERRORS OR INACCURACIES.