



7816 Clark Moody Blvd. | Port Richey, FL 34668

Freestanding Warehouse

FOR SALE \$650,000

Marc Pfleger

Commercial Associate

Office: 727-379-4900

Cell: (727) 262-5998

mpfleger@cap-realty.com

Visit us @ www.cap-realty.com



**COMMERCIAL ASSET
PARTNERS**

OFFERING

Located in the city of Port Richey this 4,400 SF warehouse offers an open and functional layout on a 0.46-acre lot. The building was constructed in 1986 and features 14' clear height, with two 10x12 overhead doors and C3 zoning.

Key Highlights

Address: 7816 Clark Moody Blvd.
Port Richey, FL 34668

- Situated on 20,000 SF lot (0.46 acres)
- 10' clear height
- C3 zoning
- 7 surface parking spaces

Excellent demographics with ~20% projected growth over the next five years

The property benefits from strong market fundamentals, with rising demand and limited supply in the Pasco County industrial corridor. It offers quick access to US Hwy 19 and is within an hour drive of both Tampa International and St. Pete-Clearwater airports.

This is an excellent opportunity for an end-user or investor seeking well-located warehouse space in a growing Tampa Bay submarket.



Demographics | 10 Miles



322,101

Population
2025



4%

Population Growth



\$70,804

Average HH Income



47

Median Age

PROPERTY PHOTOS



Warehouse For Sale | Port Richey, FL

CAP-Realty.com

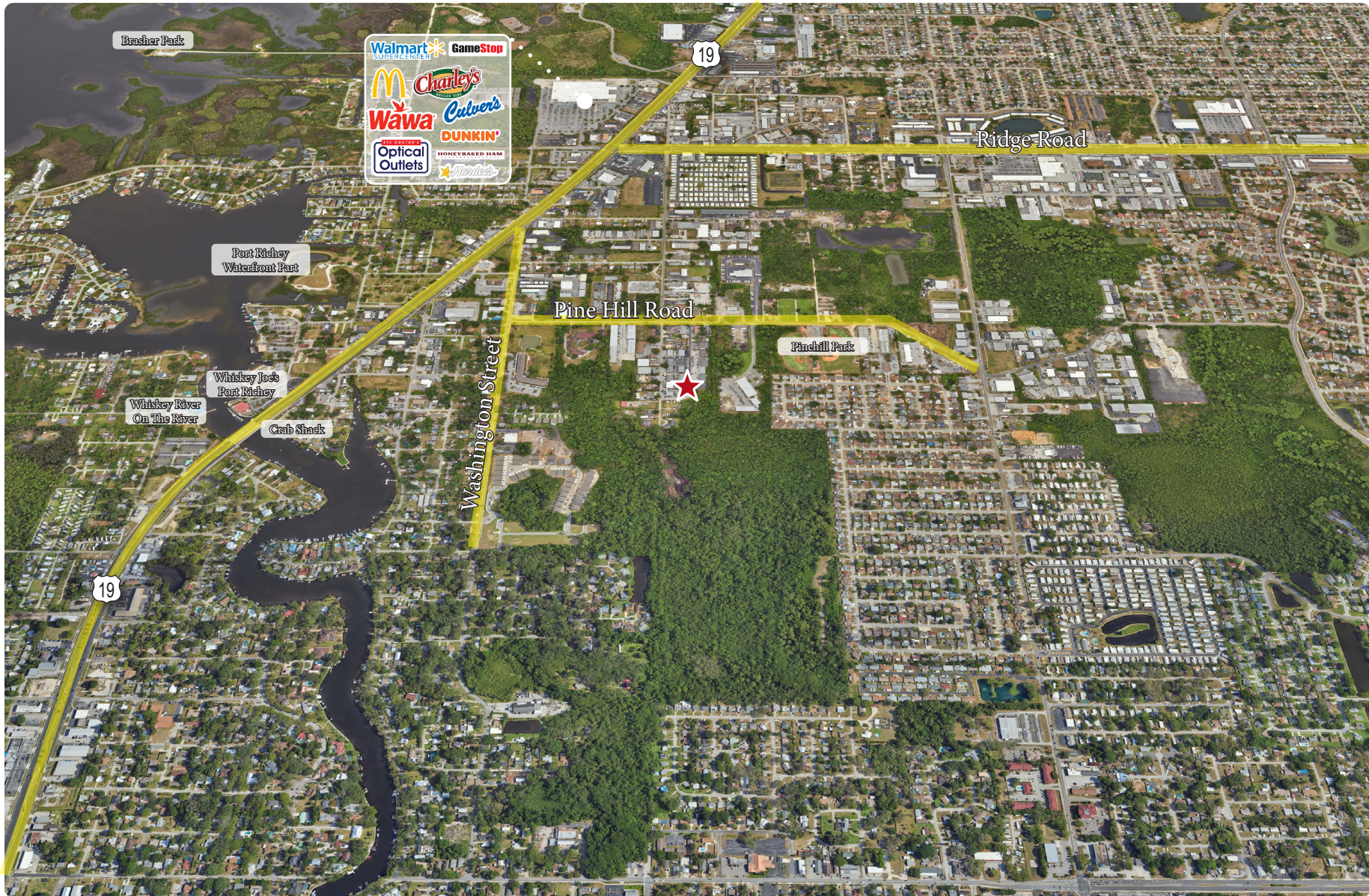
(727) 376-4900

This information is believed to be accurate, Broker is not responsible for misstatements of fact, errors or omissions, prior sale, change of price, terms or withdrawal from market without notice. Buyer and/or tenants shall verify all Information.



**COMMERCIAL ASSET
PARTNERS**

LOCATION SUMMARY



Warehouse For Sale | PORT RICHEY, FL

CAP-Realty.com

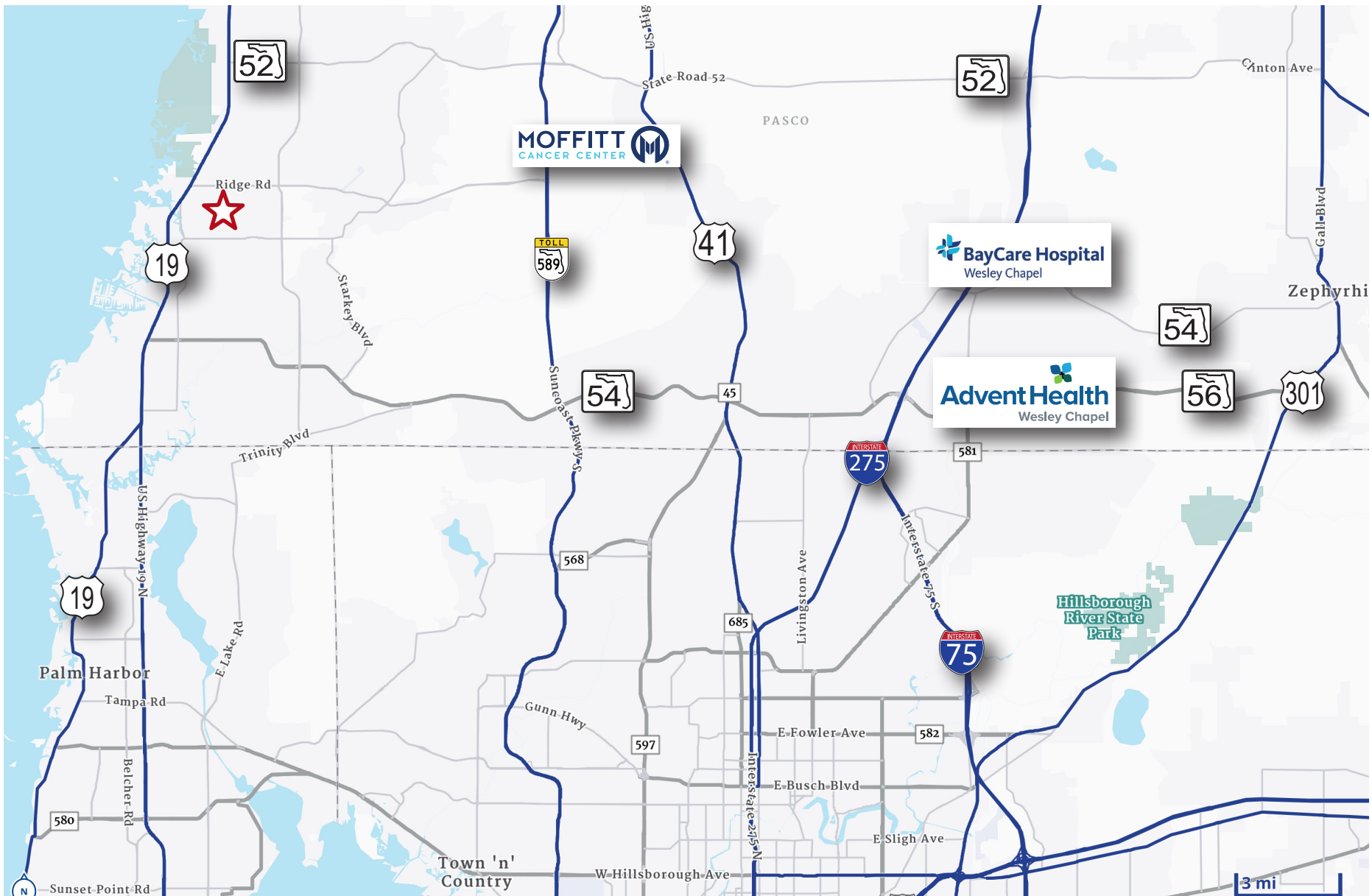
(727) 376-4900

This information is believed to be accurate, Broker is not responsible for misstatements of fact, errors or omissions, prior sale, change of price, terms or withdrawal from market without notice. Buyer and/or tenants shall verify all Information.



COMMERCIAL ASSET
PARTNERS

Warehouse For Sale | Port Richey, FL



Marc Pfleger

Commercial Associate

Office: (727) 376-4900

Cell: (727) 262-5998

Visit us @ www.cap-realty.com

LinkedIn | Facebook | Instagram

Follow CAPRealty @ [commercialassetpartnersrealty/](https://www.instagram.com/commercialassetpartnersrealty/)



**COMMERCIAL ASSET
PARTNERS**