

FOR SALE

29,936 SF / 13.3 ACRES



9722 BARKER DRIVE

NABB, IN 47147

9722 BARKER DRIVE | NABB, IN 47147

PROPERTY HIGHLIGHTS

1,000-sf office

Total square footage also includes an 8,000-sf 3-sided shed

13' - 15' ceiling height

(1) 12' x 14' drive-in door

(2) exterior loading dock positions

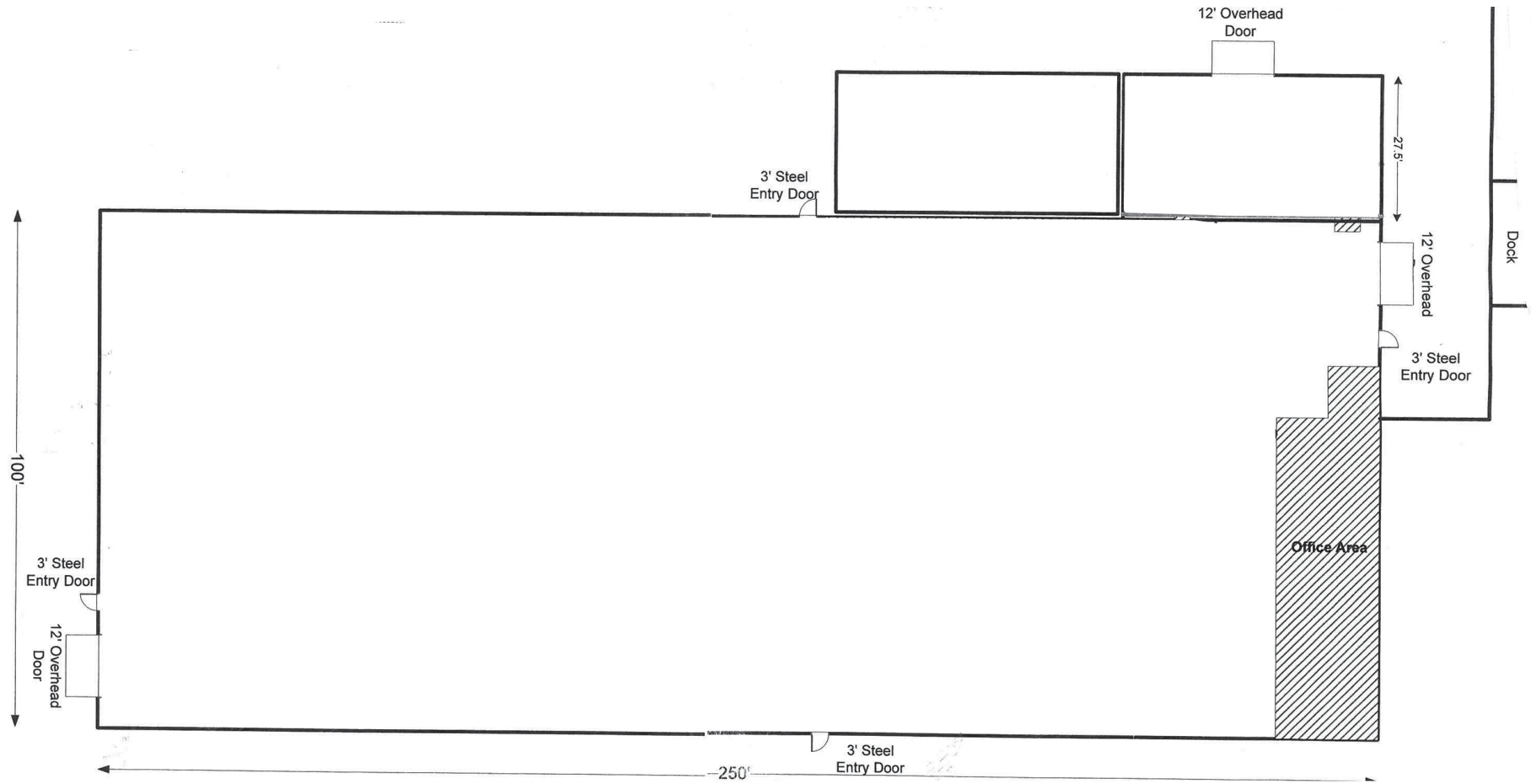
Gas heat

480 volt, 3-phase power

Compressed air lines

Approximately 4.2 mi. east of Hwy 62, and 20 mi. east of I-65





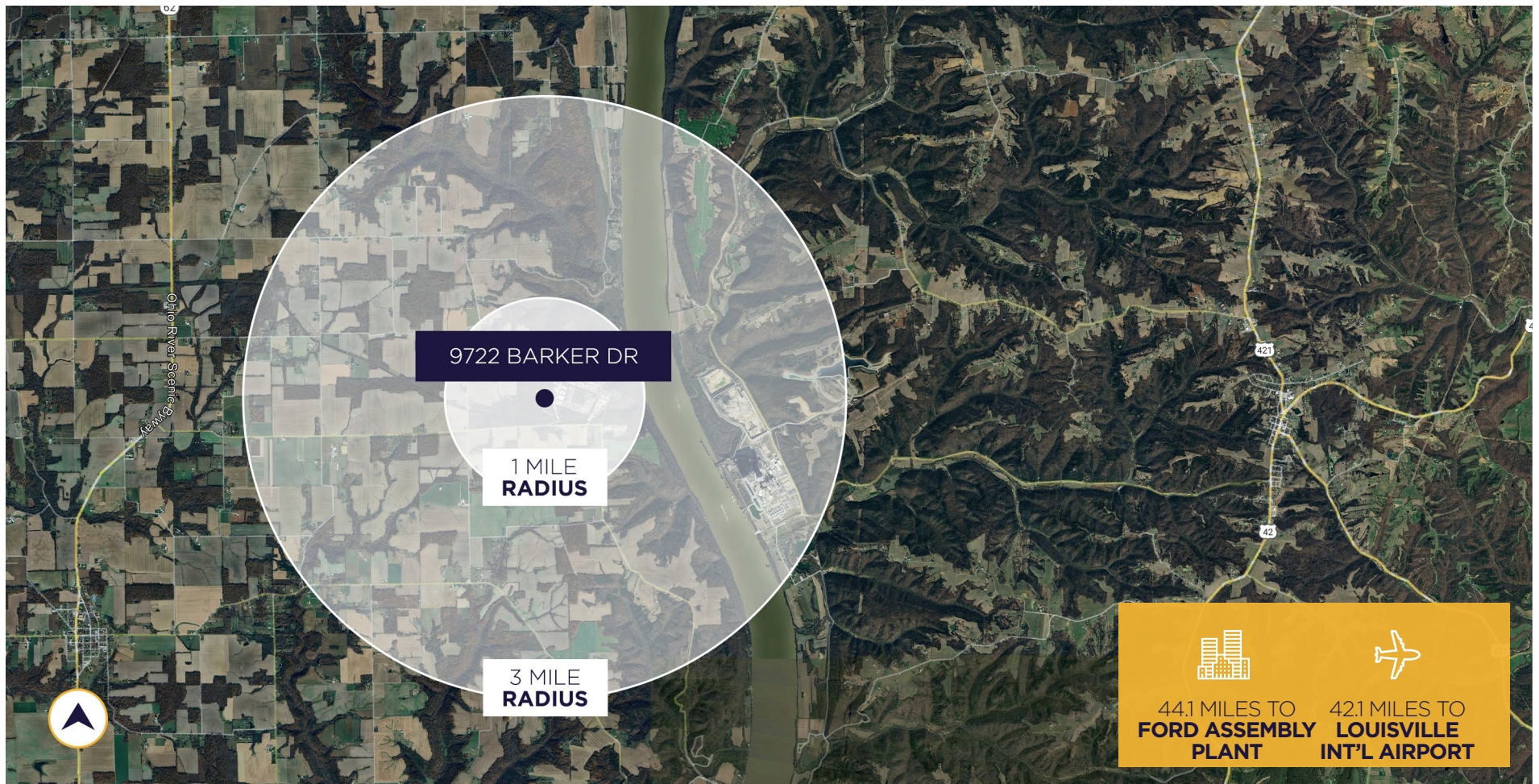
FLOOR PLAN

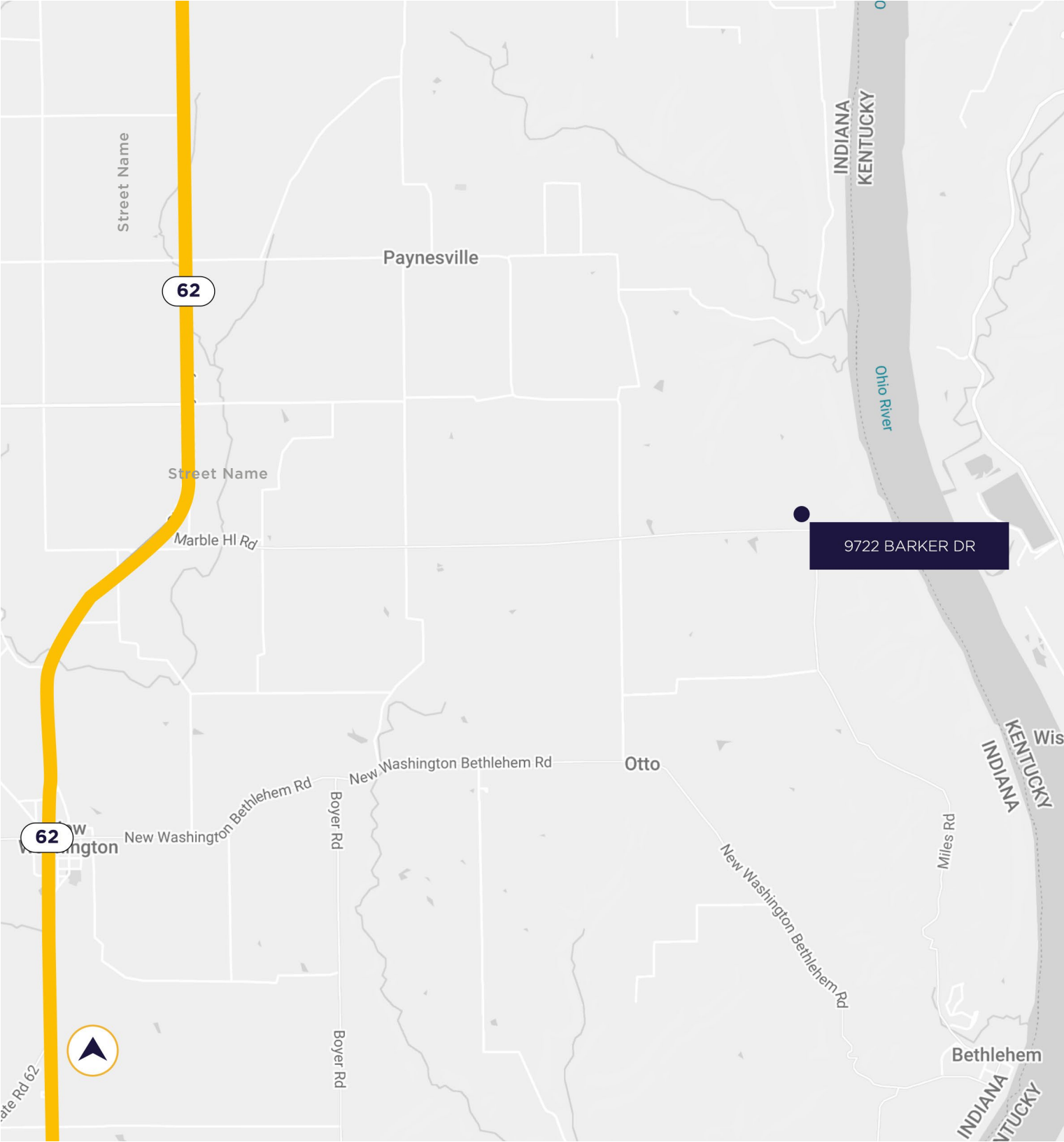
29,936 SF

9722 BARKER DRIVE | NABB, IN 47147

CENTRAL LOCATION

Located north of Louisville along the Ohio River, 9722 Barker Drive provides strong distribution access to the major markets of Louisville, Cincinnati, and Indianapolis.





4.2 MILES

TO HWY 62

20 MILES

TO I-65

42.1 MILES

TO LOUISVILLE
INT'L AIRPORT AND
UPS WORLDPORT

CONTACT INFORMATION

STEPHAN F. GRAY, SIOR

sgray@commercialkentucky.com
+1 502 719 3256



©2024 Cushman & Wakefield. All rights reserved. The information contained in this communication is strictly confidential. This information has been obtained from sources believed to be reliable but has not been verified. NO WARRANTY OR REPRESENTATION, EXPRESS OR IMPLIED, IS MADE AS TO THE CONDITION OF THE PROPERTY (OR PROPERTIES) REFERENCED HEREIN OR AS TO THE ACCURACY OR COMPLETENESS OF THE INFORMATION CONTAINED HEREIN, AND SAME IS SUBMITTED SUBJECT TO ERRORS, OMISSIONS, CHANGE OF PRICE, RENTAL OR OTHER CONDITIONS, WITHDRAWAL WITHOUT NOTICE, AND TO ANY SPECIAL LISTING CONDITIONS IMPOSED BY THE PROPERTY OWNER(S). ANY PROJECTIONS, OPINIONS OR ESTIMATES ARE SUBJECT TO UNCERTAINTY AND DO NOT SIGNIFY CURRENT OR FUTURE PROPERTY PERFORMANCE.

Independently Owned & Operated / A Member of the Cushman & Wakefield Alliance