

5,482 SF Former Bank Branch

Now Available

3400 E Grand River
Howell, Michigan

To Be Sold Via Modified Bid Process



Bids due now through 7/24/2026

For details on the property and others available nationwide visit:

www.BankingCentersForSale.com

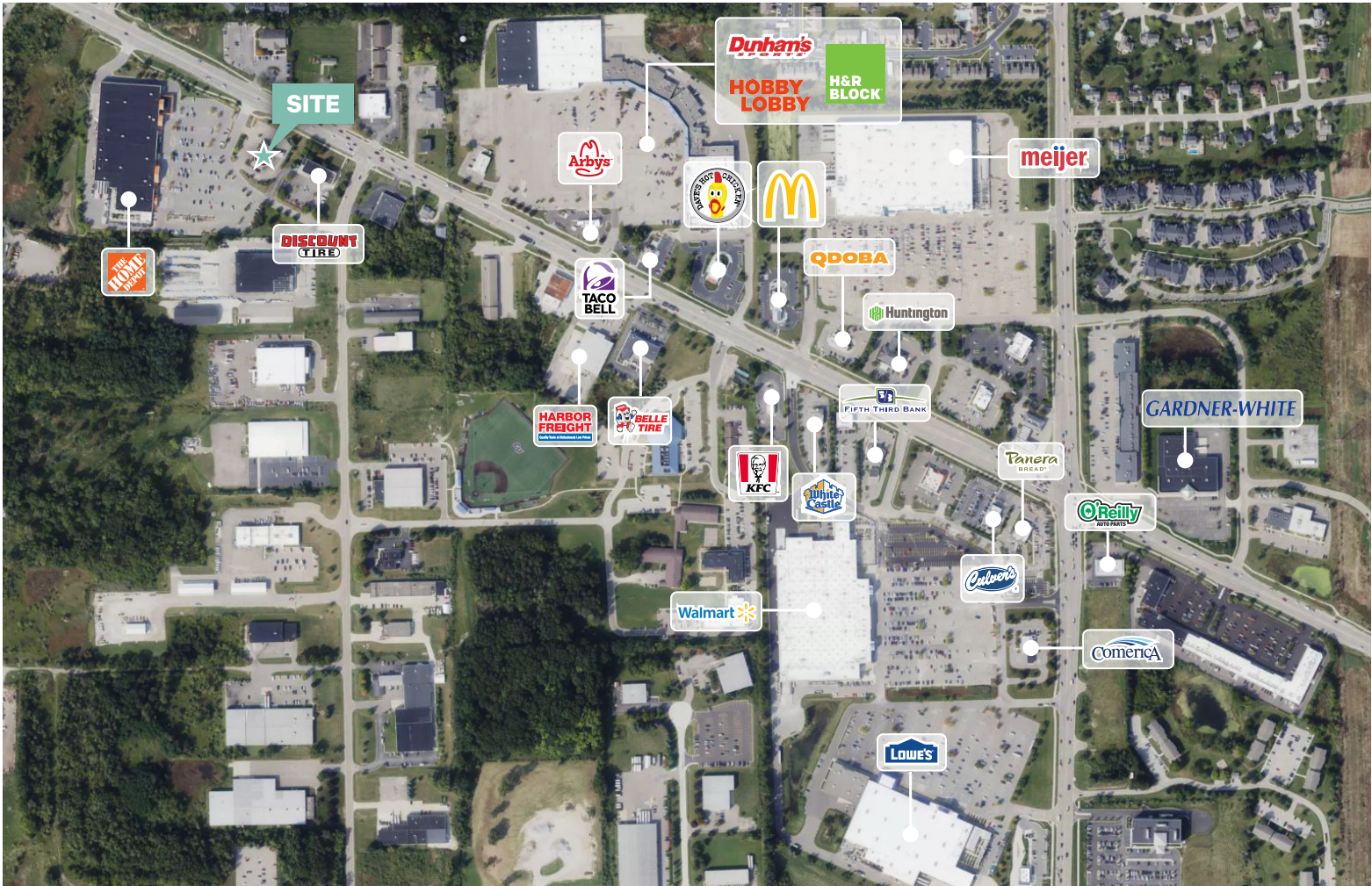
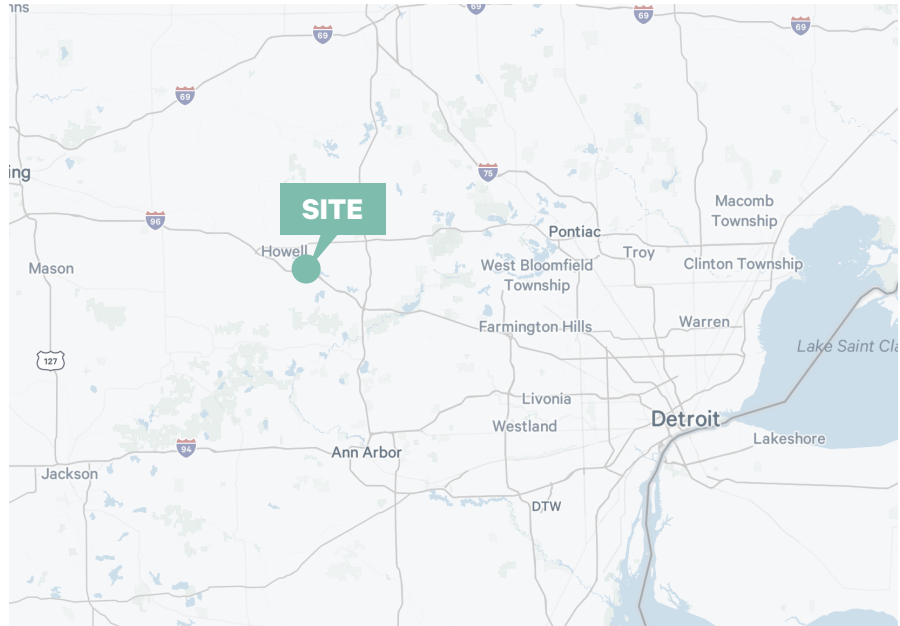
Property Info

- + 5,482 SF building on 1.29 acres
- + Configured with multiple drive through lanes
- + 2025 R. E. Taxes: \$23,539.44
- + Zoned RCD Regional Commercial District
- + Built in 2000; recent building updates
- + Multiple East Grand River access points
- + Primary retail cluster of Howell
- + Convenient to Latson Road / I-96 Four Way Interchange
- + Excellent street visibility; 40 parking spaces
- + Highly educated trade area population
 - 72.5% college education
- + \$140M+ annual grocery sales in immediate area
- + **No Deed Restrictions**

Area Demographics

2025 Demographics - 5 Mile Radius

Population	50,336
Employees	21,089
Households	20,831
Average HH Income	\$122,789
Per Capita Income	\$50,712
Average Home Value	\$386,714



Contact Us

Dave Long
 First Vice President
 +1 248 351 2051
 dave.long@cbre.com





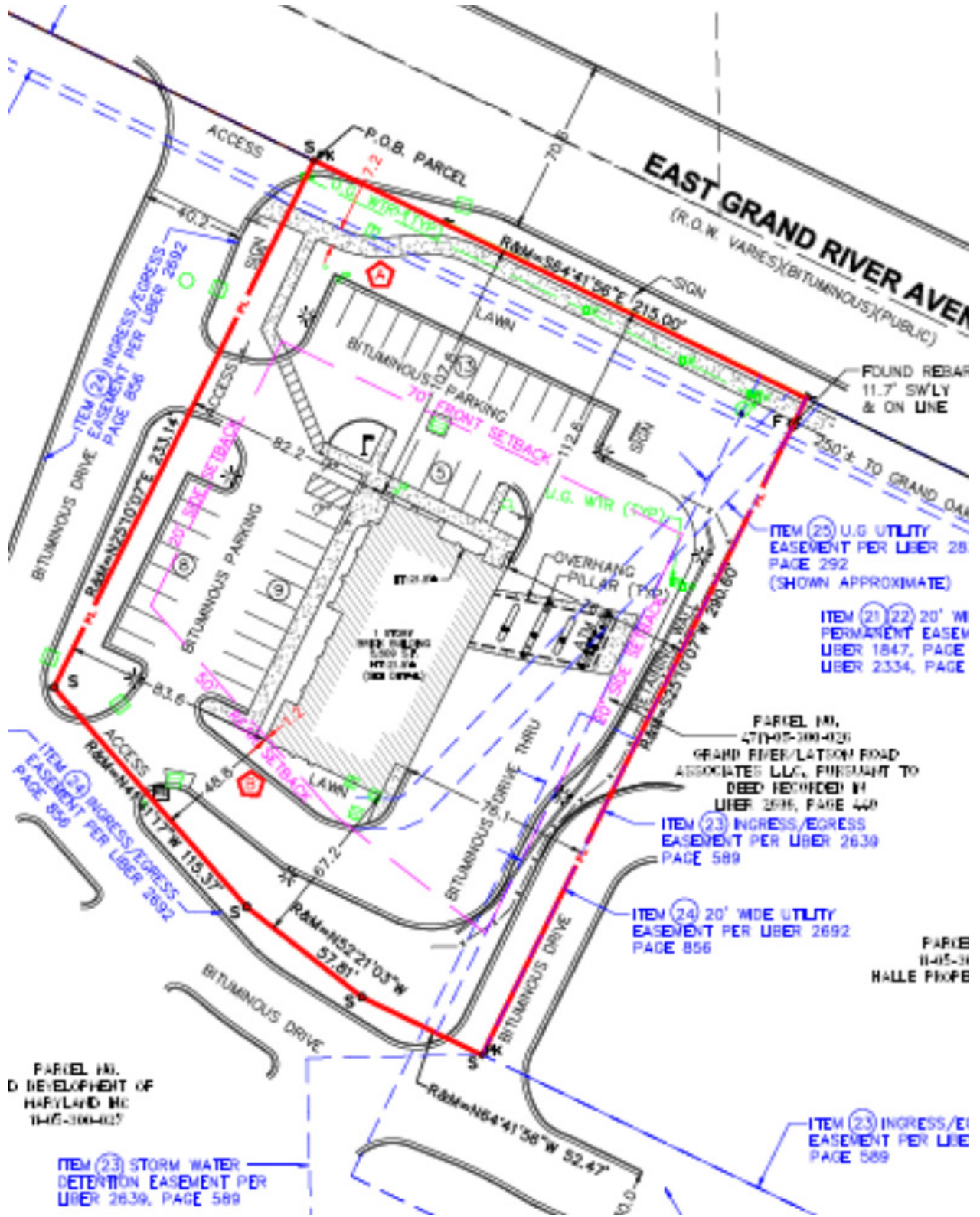
Contact Us

Dave Long

First Vice President

+1 248 351 2051

dave.long@cbre.com



Contact Us

Dave Long

First Vice President

+1 248 351 2051

dave.long@cbre.com

