

LONDON PACIFIC

ARBUTUS
SUBWAY
STATION



W BROADWAY

ARBUTUS STREET

W 13TH AVENUE



HIGH DENSITY TOWER SITE

2175, 2177, 2185, 2187, 2195, 2197 WEST 13TH AVENUE
VANCOUVER, BC

Ari Gelmon*
604.318.3958 | 604.420.2600 ext 204
arigelmon@londonpacific.ca

Ben Williams*
604.561.3680 | 604.420.2600 ext 203
bwilliams@londonpacific.ca

Joe Hawboldt
604.786.4495 | 604.420.2600 ext 219
joe@londonpacific.ca

OPPORTUNITY SUMMARY

London Pacific is pleased to exclusively present to market 2175 – 2197 West 13th Avenue, Vancouver, B.C. (the “Property”). The Property is a development site in the Broadway Corridor Plan – Kitsilano South Area B (KKSb), consisting of four parcels: 2 single family homes and two 2 duplexes with site dimensions of 150 x 125ft (18,750 sqft). Ownership of the Property have undergone a Letter of Enquiry process with the City of Vancouver garnering support for a 18-storey tower with 172 secured rental units.



TRAVEL SCORE



WALKING
90



TRANSIT*
71



BIKING
94

*not accounting for future Arbutus Station

OPPORTUNITY OVERVIEW

SALIENT FACTS

Address
2175, 2177, 2185, 2187, 2195, 2197
West 13th Avenue, Vancouver, B.C. V6K 2S2

PID
010-113-240, 013-891-707, 005-463-394,
005-463-408, 002-572-052, 002-572-001

Gross Site Area
± 18,750 SQFT / 0.43 ACRE

Dimension
± 150 x 125 FT

Base Density
5.5 FSR

Proposed Density
6.1 FSR

Improvements
Two (2) single family homes
and two (2) duplexes

Gross Taxes (2024)
\$44,588.22

Tenure
2 Owner Occupied
5 Tenancies
1 Vacant

PROPERTY HIGHLIGHTS

- + Fully assembled development site in Kitsilano allowing for secured market rental use and retail/service
- + Ownership submitted full Letter of Enquiry package with drawings for 172 secured rental units, 1 commercial space and 1 heritage unit to the City of Vancouver garnering staff support
- + City of Vancouver supportive of 6.1 FSR (114,375 BSF) over 18 storeys
- + Corner lot with 150 feet of frontage and 125 feet of depth, allowing for an exceptional development with efficient dimensions
- + Minimal tenant relocation with current low-density improvements (5 tenancies)
- + Less than 450M from future Broadway Subway (Arbutus Station)



DEVELOPMENT PROPOSAL

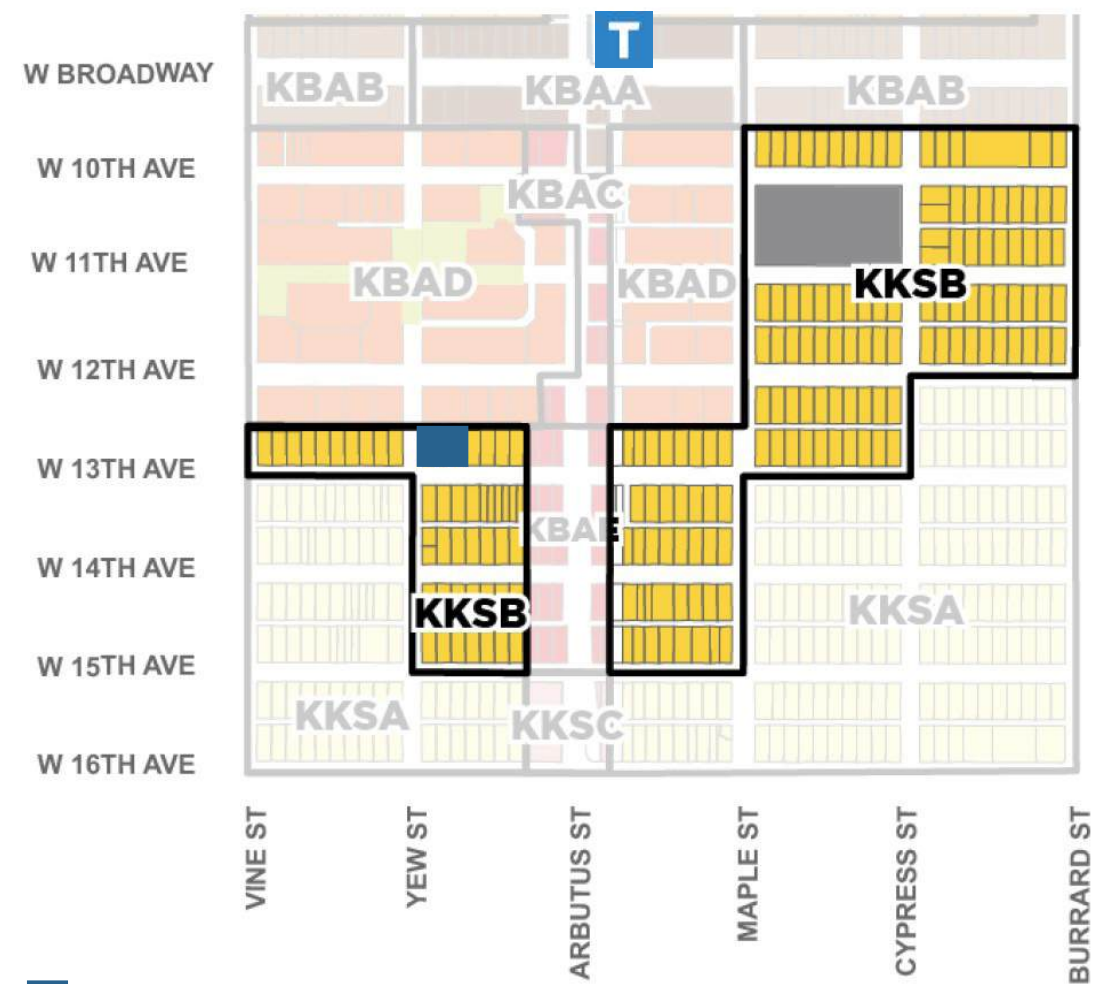


Proposed renderings for 2175 - 2197 West 13th Avenue

Ownership has gone through an entire letter of enquiry process with the City of Vancouver, envisioning an 18-storey tower with 172 secured market rentals, commercial space and a heritage retention component. The drawings propose indoor and outdoor amenity spaces, plus 139 storage lockers and 108 parking stalls. For further details, please view the Due Diligence materials.

UNIT MIX	Studio	1BR	1BR+D	2BR	2BR+D	3BR	TOTAL
Level 1			6				6
Level 2	3	5	2	3			13
Level 3	3	5	2	4			14
Level 4	3	5	2	4			14
Level 5	2	4		2			8
Level 6	2	4	1	3			10
Level 7	2	4		4			10
Level 8	2	4		4			10
Level 9	2	4		4			10
Level 10	2	4		4			10
Level 11	2	4		4			10
Level 12	2	4		4			10
Level 13	2	4		4			10
Level 14	2	4		4			10
Level 15	2	4		4			10
Level 16	2	4		4			10
Level 17	1	2			2	2	7
Total Count Per Type	34	65	13	56	2	2	172
Mix distribution (%)	19.8%	37.8%	7.6%	32.6%	1.2%	1.2%	100%
TOTAL UNITS	65%		35%				172

ZONING



SUBJECT SITE

Residential Apartment Areas

- Low-Rise
- Mid- to High-Rise
- High-Rise

Mixed-Use Areas

- Residential Primary
- Low-Rise Villages
- Medium-Rise
- Mid- to High-Rise
- High-Rise

INTENT

Enable opportunities for diverse rental housing forms with below-market units in areas closer to rapid transit.

POLICY

Policy Area	Kitsilano South - Area B KKSAB	
Uses	Residential, retail/services	
Option/Tenure	Secured market and below-market rental housing	Secured rental housing
Max Height	18 storeys	3-6 storeys
Max Density	5.5 FSR	1.0-2.7 FSR
Min Frontage	45.7 m (150 ft.)	Variable - refer to Built Form and Site Design (Chapter 11)
Note	<ul style="list-style-type: none"> A minimum of 20% of the residential floor area is required to be secured at below-market rents (see Housing (Chapter 12) for details). See Land Use (Chapter 7) for cases where lesser site frontage may be considered at the discretion of the Director of Planning. 	

ADDITIONAL POLICY

- 8.11.2 There will be a maximum of two towers per block (street-to-street, including any laneways) in the Kitsilano South Area B policy area. For blocks located in both Kitsilano South Area B and another policy area, only towers in Kitsilano South Area B shall be counted toward the maximum. However, for the northern block faces along 10th Avenue and the northern block face along 13th Avenue (between Vine and Maple Streets), only one tower will be allowed on the Kitsilano South Area B block face.
- 8.11.3 Minor increases in height and density will be considered for delivery of ground-level local-serving retail/service uses or childcare.
- 8.11.4 For 6-storey apartment buildings, minor increases in density may be considered where 100% of the residential floor area is social housing, generally following the provisions for social housing in the RR-2C district schedule and associated requirements.



THE NEIGHBOURHOOD

LOCATION

Kitsilano—commonly known as “Kits”—is one of Vancouver’s most sought-after neighborhoods. This vibrant community is renowned for its blend of urban amenities and natural beauty, making it an ideal location for residential or mixed-use development.

The Property is strategically situated within walking distance to all shops and amenities making this area ripe for a development. Kitsilano Beach, one of the city’s most popular destinations for outdoor recreation and relaxation, is a Vancouver landmark that can be accessed year-round. Residents can enjoy stunning views of the ocean and mountains, fostering an enviable lifestyle that balances city living with a connection to nature.

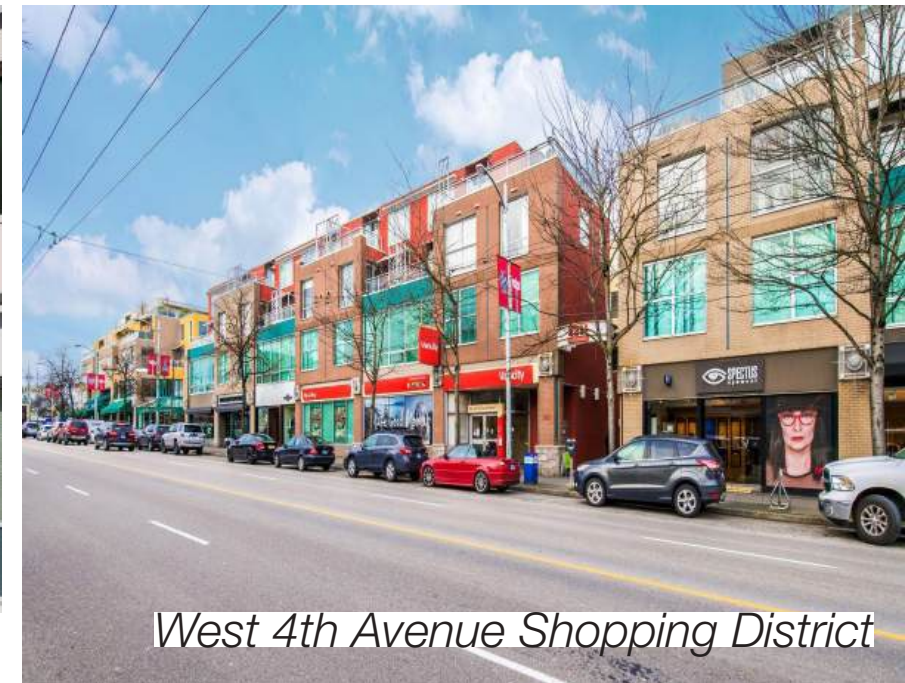
Kitsilano is home to a rich array of amenities, including:

- **Shopping and Dining:** The bustling West 4th Avenue features an eclectic mix of boutiques, cafes, and restaurants, catering to a diverse range of tastes and preferences.
- **Recreational Facilities:** In addition to the beach, the neighborhood boasts several parks, including Connaught Park and the popular Kitsilano Community Centre, offering sports facilities, fitness programs, and community events.
- **Transportation:** The site benefits from excellent public transit options, with easy access to bus routes and bike lanes and the future Arbutus Station, ensuring seamless connectivity to downtown Vancouver and beyond.

Kitsilano attracts a diverse demographic, including young professionals, families, and retirees. Its vibrant community atmosphere, coupled with a strong emphasis on health and wellness, makes it an appealing destination for those seeking an active lifestyle. The area is also home to a variety of educational institutions, adding to its family-friendly appeal.



Kitsilano Secondary School



West 4th Avenue Shopping District



Kitsilano Community Centre



Arbutus Subway Station

connectivity to downtown Vancouver



Kitsilano Beach

DISTANCE



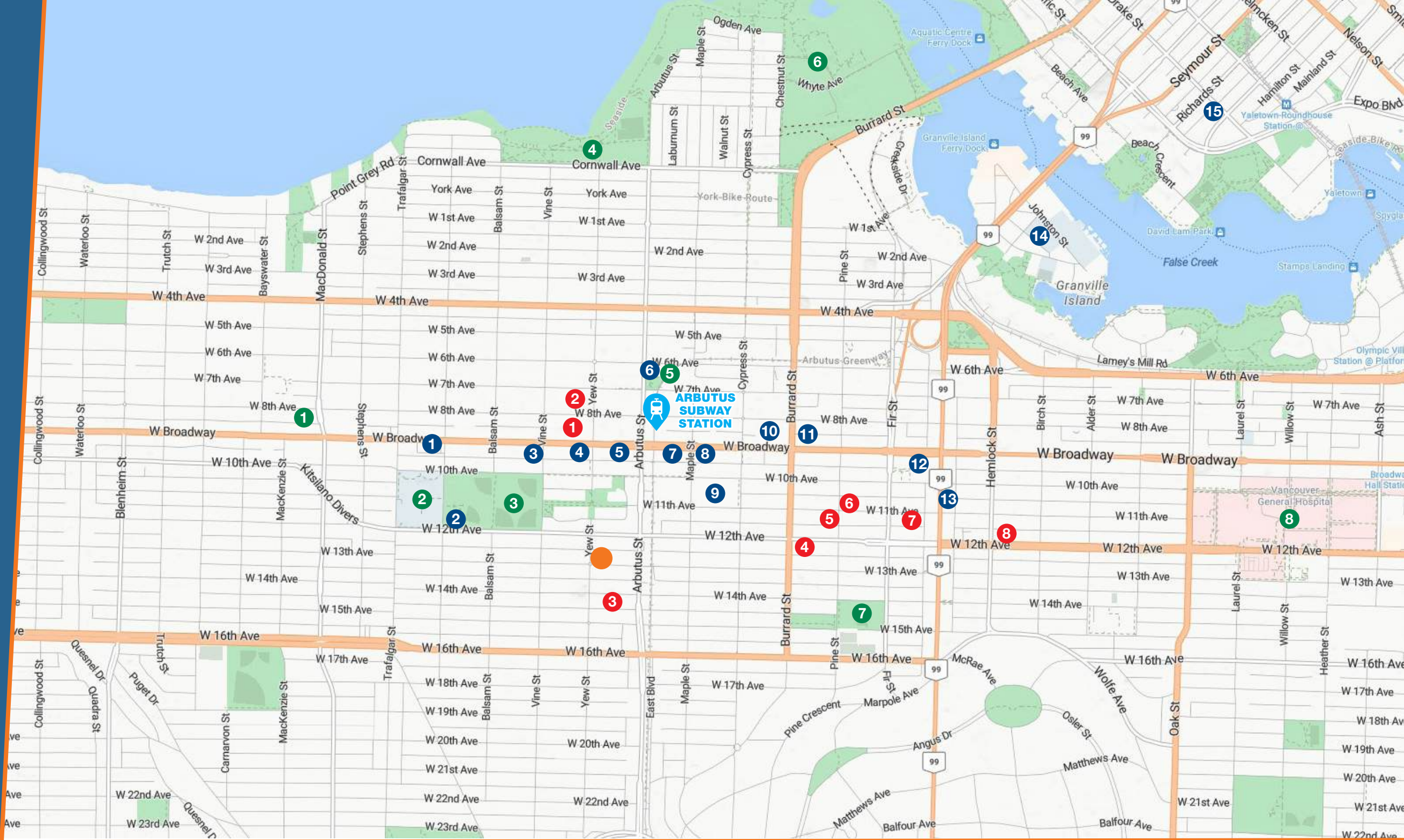
WALKING

- 4 min Connaught Park
- 7 min London Drugs
- 7 min Fitness World
- 7 min Arbutus Station
- 9 min BC Liquor Store
- 10 min Kitsilano Community Centre
- 12 min Kitsilano Secondary School



DRIVING

- 7 min Kitsilano Beach – 7 minutes
- 7 min Vancouver General Hospital
- 9 min Downtown Vancouver
- 11 min University of British Columbia
- 18 min Vancouver International Airport
- 114 min Whistler



LEGEND

SUBJECT SITE

RETAIL

- 1 WHITE SPOT
- 2 KITSILANO FARMERS MARKET
- 3 PLATFORM 7 COFFEE
- 4 LONDON DRUGS + IGA
- 5 FITNESS WORLD + TEMAKI SUSHI
- 6 ARBUTUS COFFEE
- 7 BC LIQUOR STORE
- 8 GREEN ORGANIC NATURAL MARKET

- 9 LORD TENNYSON OUT OF SCHOOL CARE
- 10 OXGEN YOGA AND FITNESS
- 11 ESSO GAS STATION
- 12 CACTUS CLUB CAFE
- 13 STARBUCKS
- 14 GRANVILLE ISLAND
- 15 DOWNTOWN VANCOUVER

PUBLIC SPACES

- 1 VANCOUVER PUBLIC LIBRARY
- 2 KITSILANO SECONDARY SCHOOL
- 3 CONNAUGHT PARK
- 4 KITSILANO BEACH
- 5 DELAMONT PARK
- 6 MUSEUM OF VANCOUVER
- 7 GRANVILLE PARK
- 8 VANCOUVER GENERAL HOSPITAL

DEVELOPMENT APPLICATIONS

- 1 2226 - W 8TH AVENUE + 2415 - 2421 YEW STREET
- 2 2225 W 8TH AVENUE
- 3 2156 - 2172 W 14TH AVENUE
- 4 1770 W 12TH AVENUE
- 5 1726 W 11TH AVENUE
- 6 1675 W 11TH AVENUE
- 7 1540 W 10TH AVENUE
- 8 1365 W 12TH AVENUE

OFFERING PROCESS

NEXT STEPS

Prospective purchasers are invited to sign a **Confidentiality Agreement** (available from the Listing Agents) to received further information about this offering and to gain access to a comprehensive data room with Due Diligence materials which includes:

- Topographic Plan
- Tree Report
- Architectural Drawing
- Statement of Significance Report
- Rent Roll
- Land Title

Prospective purchasers are invited to submit offers to purchase the Property for consideration by the Vendors. Offers should be presented in the form of offer preferred by the Vendors, a copy of which is available through the Listing Agents upon request.

Please contact our broker team today for more information.



ARI GELMON PREC
Associate Vice President
604.318.3958 | 604.420.2600 ext.204
arigelmon@londonpacific.ca



BEN WILLIAMS PREC
Executive Vice President
604.561.3680 | 604.420.2600 ext.203
bwilliams@londonpacific.ca



JOE HAWBOLDT
Sales Representative
604.786.4495 | 604.420.2600 ext.219
joe@londonpacific.ca

ARI GELMON PREC

Associate Vice President
604.318.3958 | 604.420.2600 ext.204
arigelmon@londonpacific.ca

BEN WILLIAMS PREC

Executive Vice President
604.561.3680 | 604.420.2600 ext.203
bwilliams@londonpacific.ca

JOE HAWBOLDT

Sales Representative
604.786.4495 | 604.420.2600 ext.219
joe@londonpacific.ca

LONDON PACIFIC

LONDON PACIFIC PROPERTY AGENTS INC. | T 604 420 2600 F 604 420 2206 | LONDONPACIFIC.CA

E & O.E.: All information contained herein is from sources we deem reliable, and we have no reason to doubt its accuracy; however, no guarantee or responsibility is assumed thereof, and it shall not form any part of future contracts. Properties are submitted subject to errors and omissions and all information should be carefully verified. All measurements quoted herein are approximate. * Personal Real Estate Corporation

This publication is the property of London Pacific Property Agents Inc. and is protected by domestic and international copyright, trade name and other laws, and other rights unless otherwise specified. Any modification, reproduction, alteration or adaptation is strictly prohibited. © London Pacific Property Agents Inc. reserves all rights.