

126 Executive Drive – 230

Wilkesboro, NC



One Corporate Center

- 1700 square feet Office space
- Close proximity to Hwy 421
- Rental includes:
 - Large Parking area
 - Electricity
 - Common Area (Bathrooms, Breakroom)

Demographic Summary / Population (2021)

City of Yadkinville	2,818		
Yadkin County TA	37,543		
POPULATION	1 MILE	3 MILE	5 MILE
	2,362	6,559	11,710
POPULATION	5 MINUTES	10 MINUTES	15 MINUTES
	3,420	8,170	19,596
Average HH Income	\$64,396	\$66,336	\$68,030
Median HH Income	\$46,948	\$49,605	\$50,379

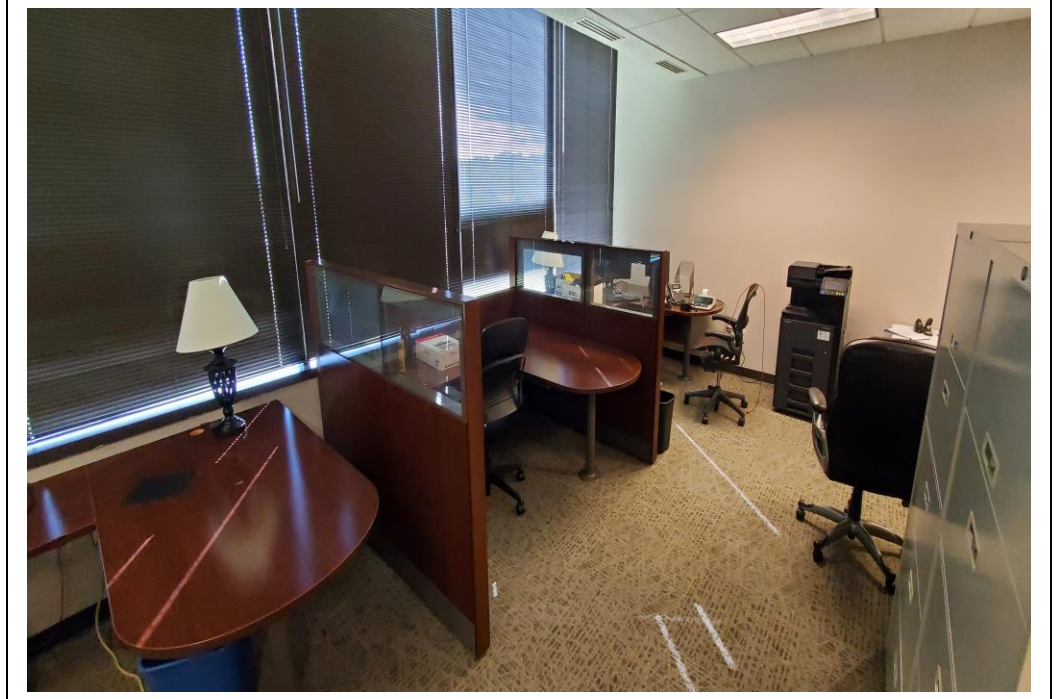
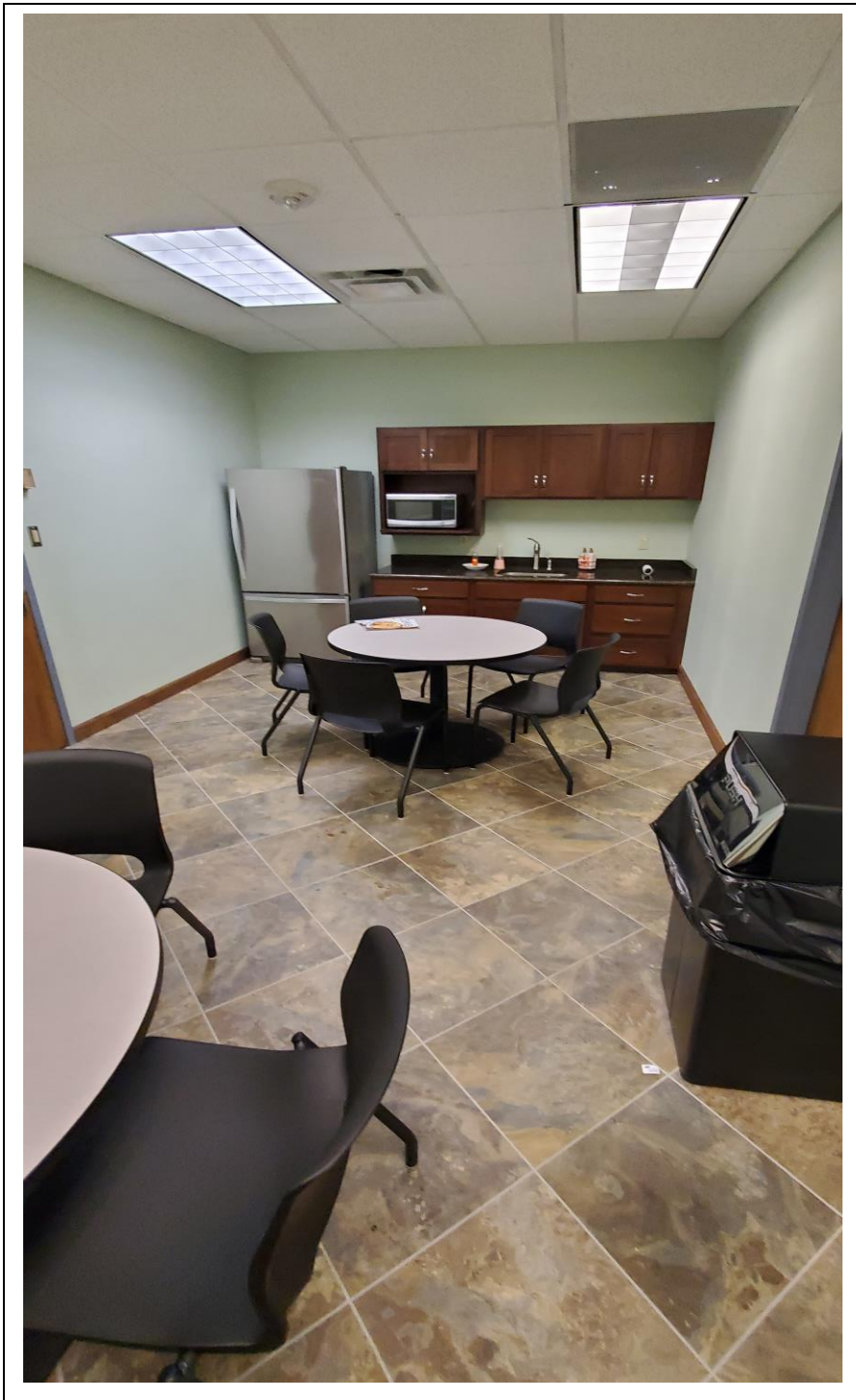


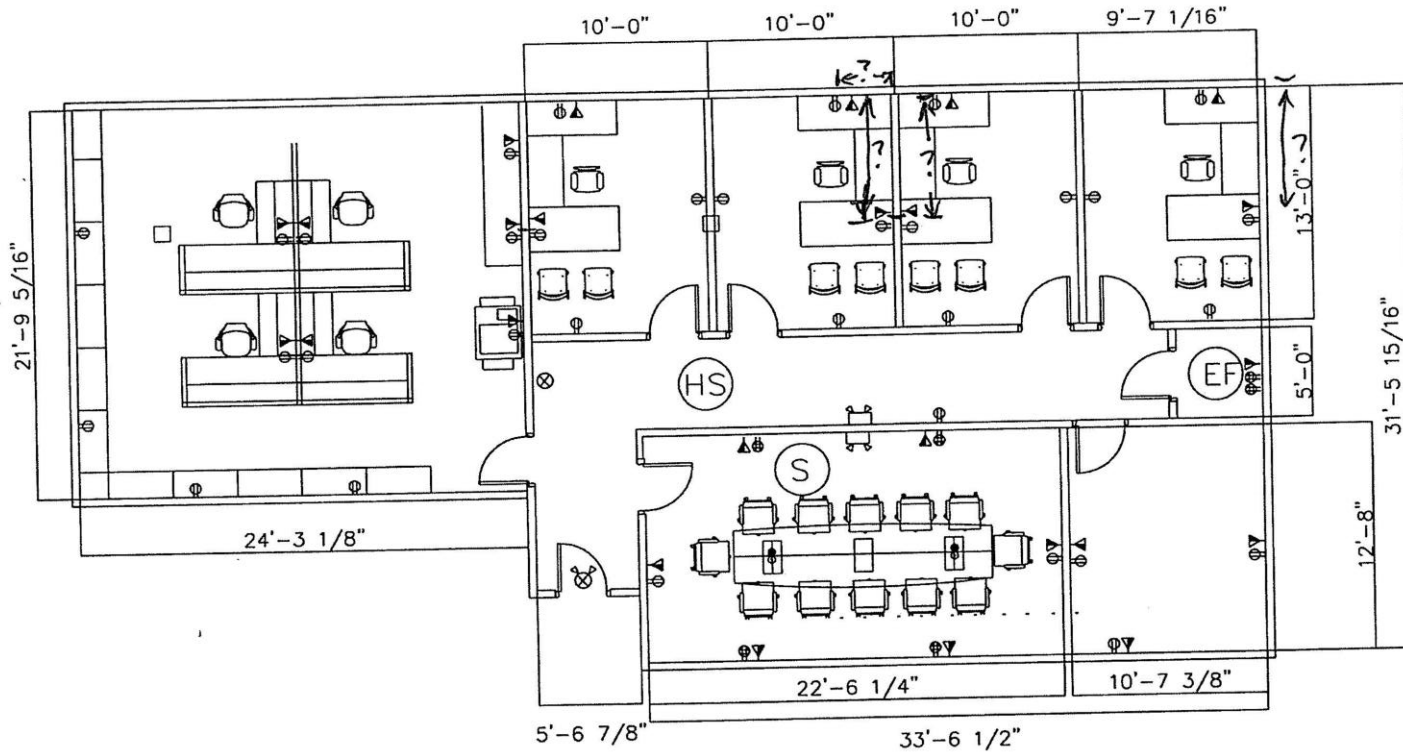
Venture Properties

Venture Properties

PO Box 843 ~ Wilkesboro, NC 28697 ~ (336) 667-8000 ~ Fax (336) 667-8001

Aaron Edwards ~ (336) 667-8000 ext.18~ www.VPDevelopment.com





ONE Corporate Center
Suite 230

TENANT UPFIT PLAN FOR GREAT STATE BANK

Owner - Oakwoods Properties, LLC - Brett D. Cothren Member/Manager