

23,502 SF PAD SITE AVAILABLE *BUILD TO SUIT*

465 S. Webb Road, Wichita, Kansas



P.O. Box 17087
Wichita, KS 67217
(316) 942-7949

Jon R Cyphert
Commercial Real Estate
316) 841-0880 / joncyphert@gmail.com

WHAT'S NEARBY?

Hotels



Restaurants



Retailers



HIGHLIGHTS

- ▶ New to market!
- ▶ Incredible location in a well established commercial corridor.
- ▶ High volume intersection in Wichita with 69,000 CPD.
- ▶ Access to cities of Andover and Augusta.
- ▶ Strong daytime population.
- ▶ High visibility from Highway 54 and I-135; immediate access to Highway 54.
- ▶ Strong hotel market. Over 1,000 rooms within walking distance.

DEMOGRAPHICS

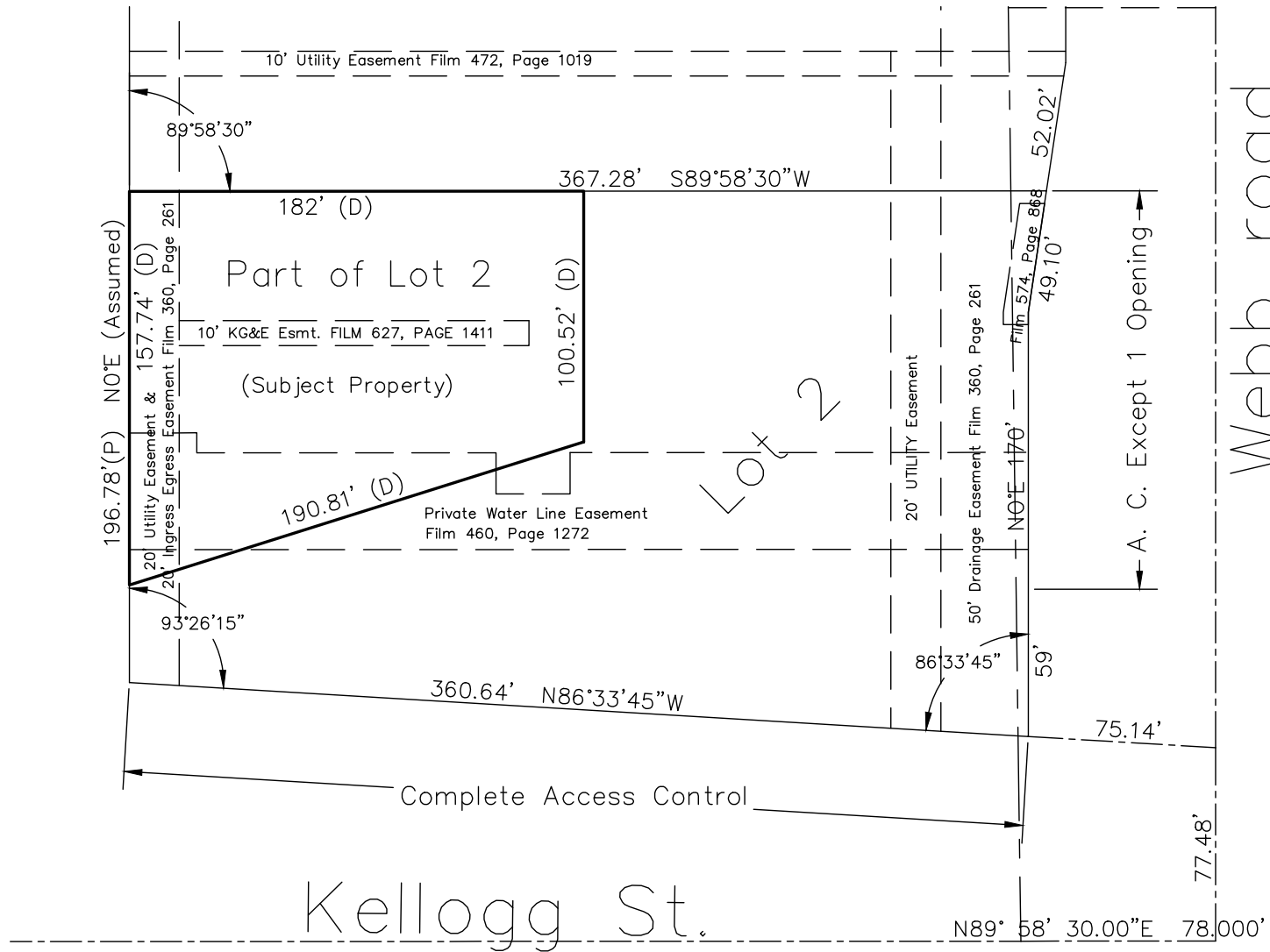
| | 1 MILE | 3 MILE |
|---------------------------|----------|----------|
| Population | 6,786 | 61,176 |
| Avg. HH Income | \$42,593 | \$58,421 |
| Daytime Population | 4,411 | 27,897 |



P.O. Box 17087
Wichita, KS 67217
(316) 942-7949

Jon R Cyphert
Commercial Real Estate
316) 841-0880 / joncyphert@gmail.com

465 S WEBB, WICHITA, KS *Survey*



P.O. Box 17087
 Wichita, KS 67217
 (316) 942-7949

Jon R Cyphert
 Commercial Real Estate
 316) 841-0880 / joncyphert@gmail.com

465 S WEBB, WICHITA, KS *Aerial View*



P.O. Box 17087
Wichita, KS 67217
(316) 942-7949

Jon R Cyphert
Commercial Real Estate
316) 841-0880 / joncyphert@gmail.com