



KLEIN
STONE
COMMERCIAL
AT HOULIHAN LAWRENCE



HOULIHAN LAWRENCE
COMMERCIAL

873 N Broadway

White Plains, NY 10603

Exclusively Represented By:

Jared Stone

Associate Broker

914 798 4900

jstone@houlihanlawrence.com

Garry Klein

Houlihan Lawrence, Inc.

914 798 4900

gklein@houlihanlawrence.com

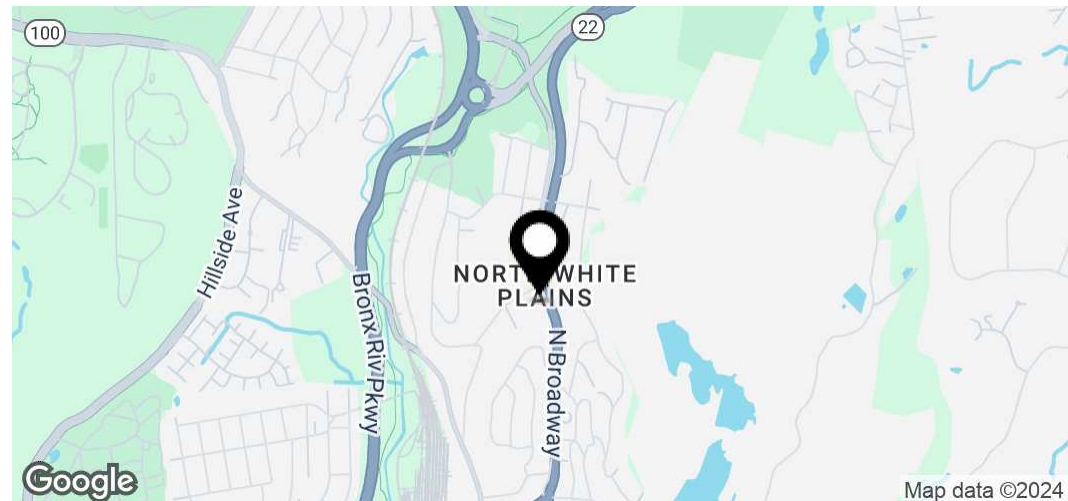
RESTAURANT AND BREWERY FOR SALE / LEASE

873 N Broadway

White Plains, NY 10603

FOR SALE / LEASE

Executive Summary



Sale Price	\$1,900,000
Lease Rate	Negotiable

Offering Summary

Price / GSF	\$553.13
Lease Type	NNN
GSF	3,435 SF
Parking Spaces / Ratio	21 / 6
Site Size	0.36 Acres

Property Overview

Houlihan Lawrence Commercial is pleased to exclusively represent the sale and lease of the former Miles The Prince building at 873 N Broadway, White Plains, NY. This rare offering includes the real estate, all fixtures, and equipment, providing a true turn-key opportunity for a restaurant and craft brewing facility. Close to Downtown White Plains and great proximity to all major highways.

Renovated in 2021 with nearly \$1 million in capital improvements, the property features a full sit down restaurant with seating for 61 patrons, and a brewing capacity of 10 barrels with total annual production of over 800 barrels (1,600 kegs). This is an ideal opportunity for restaurateurs or craft brewers seeking a fully equipped, modern facility. This property is ready to support a seamless transition or expansion of your existing operation or launch of a new successful business venture.

Jared Stone

Associate Broker
914 798 4900
jstone@houlihanlawrence.com

Garry Klein

Houlihan Lawrence, Inc.
914 798 4900
gklein@houlihanlawrence.com

Houlihan Lawrence

800 Westchester Ave. Ste. N505
Rye Brook, NY 10573



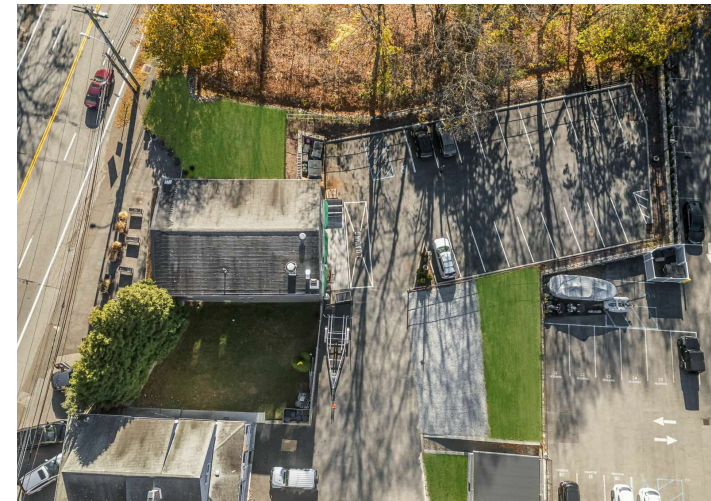
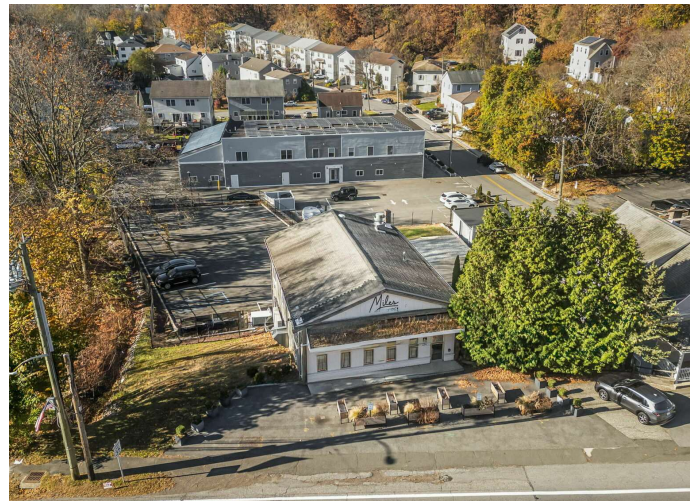
HOULIHAN LAWRENCE
COMMERCIAL

873 N Broadway

White Plains, NY 10603

FOR SALE / LEASE

Exterior Photos



Jared Stone
Associate Broker
914 798 4900
jstone@houlihanlawrence.com

Garry Klein
Houlihan Lawrence, Inc.
914 798 4900
gklein@houlihanlawrence.com

Houlihan Lawrence
800 Westchester Ave. Ste. N505
Rye Brook, NY 10573



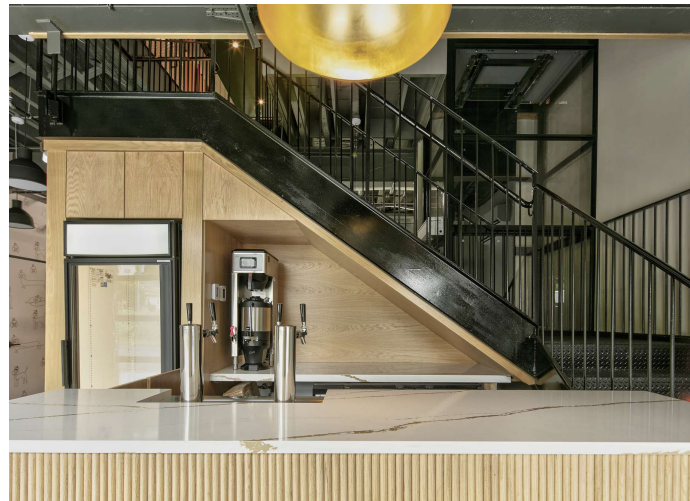

HOULIHAN LAWRENCE
COMMERCIAL

873 N Broadway

White Plains, NY 10603

FOR SALE / LEASE

Interior Photos

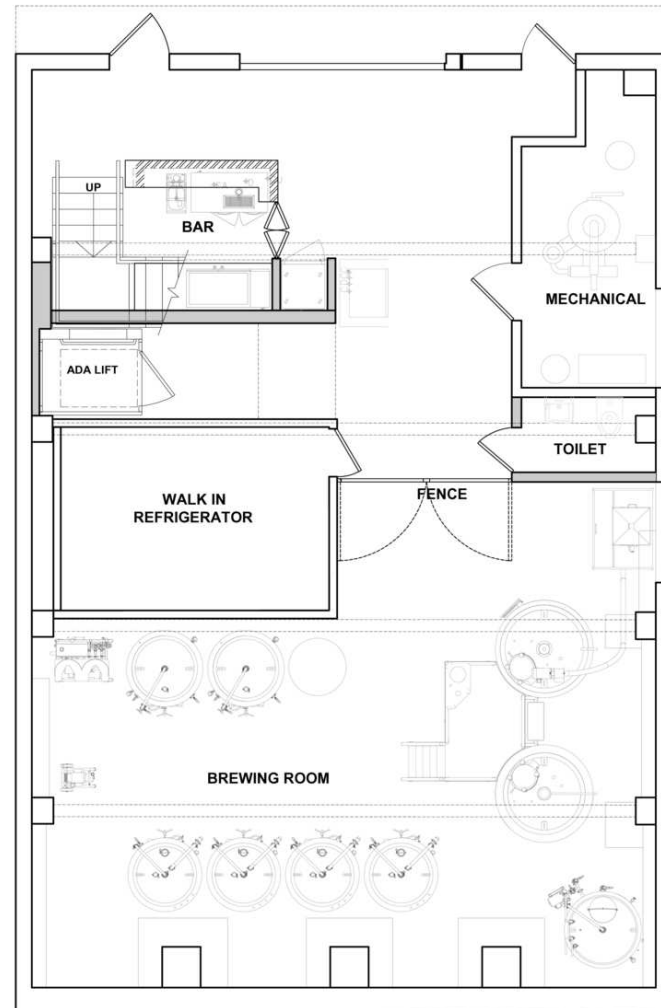


Jared Stone
Associate Broker
914 798 4900
jstone@houlihanlawrence.com

Garry Klein
Houlihan Lawrence, Inc.
914 798 4900
gklein@houlihanlawrence.com

Houlihan Lawrence
800 Westchester Ave. Ste. N505
Rye Brook, NY 10573





MILES THE PRICE 873 N Broadway White Plains, NY 10603		
ARCHITECT		
WID CHAPMAN ARCHITECTS 1200 5TH AVENUE #14N New York, NY 10029		
CIVIL ENGINEER		
Insite Engineering, Surveying & Landscape Architecture, P.C. 3 Garnett Place Camarlet NY 10612 www.insite-eng.com		
ENGINEER		
ZLS CONSULTING ENGINEERS 150 W 28TH ST 4TH FLOOR New York, NY 10001 917 287 8945		
KITCHEN DESIGNER		
Singer Equipment Company		
SUBMISSION/ REVISIONS		
NO.	ISSUE	DATE
01.	REVISED SET FOR FILLING	10/03/2022
SEAL & SIGNATURE		
SCALE: AS NOTED		
DRAWING TITLE		

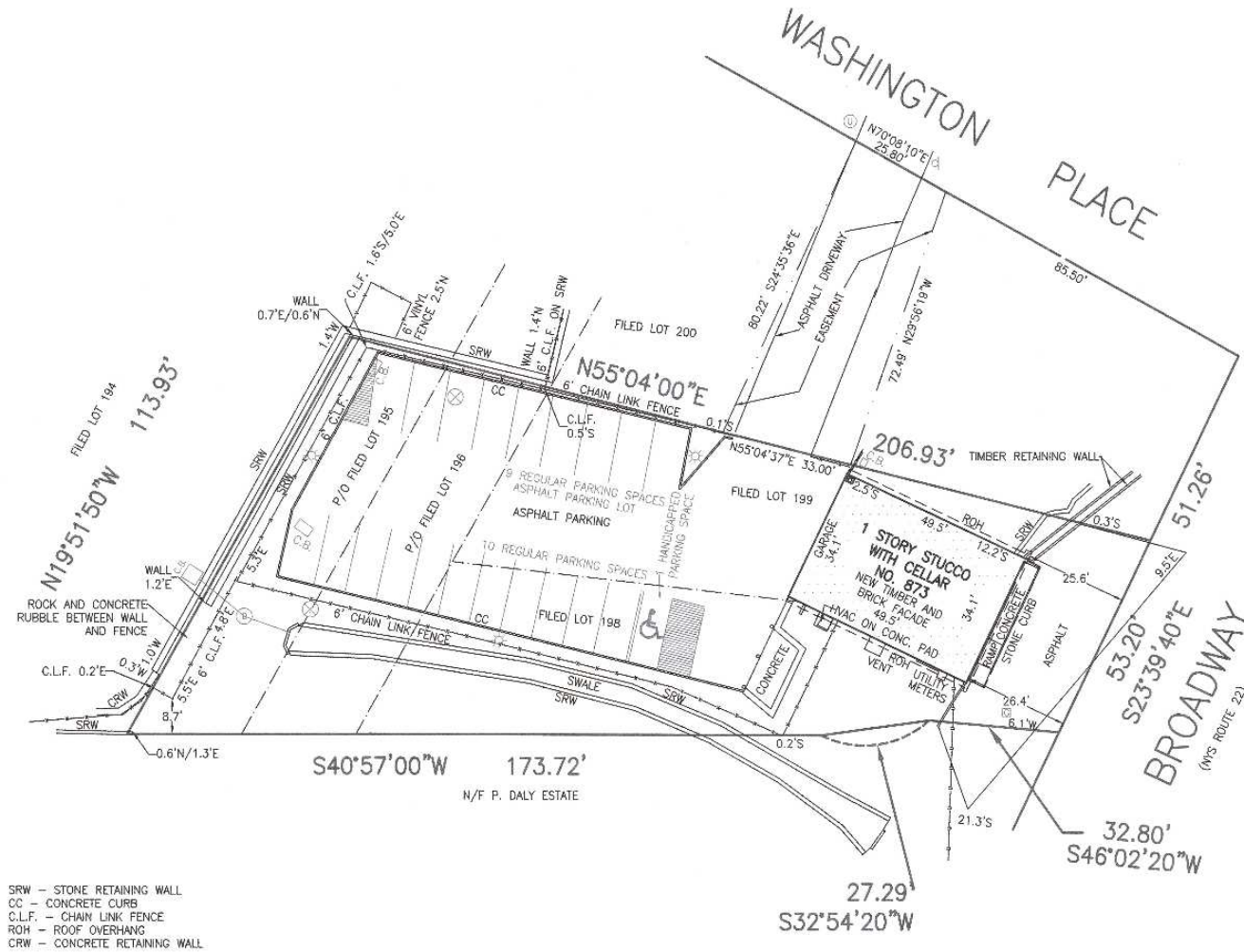
Jared Stone
Associate Broker
914 798 4900
jstone@houlihanlawrence.com

Garry Klein
Houlihan Lawrence, Inc.
914 798 4900
gklein@houlihanlawrence.com

Houlihan Lawrence
800 Westchester Ave. Ste. N505
Rye Brook, NY 10573



HOULIHAN LAWRENCE
COMMERCIAL



Jared Stone
 Associate Broker
 914 798 4900
 jstone@houlihanlawrence.com

Garry Klein
 Houlihan Lawrence, Inc.
 914 798 4900
 gklein@houlihanlawrence.com

Houlihan Lawrence
 800 Westchester Ave. Ste. N505
 Rye Brook, NY 10573



HOULIHAN LAWRENCE
 COMMERCIAL

873 N Broadway

White Plains, NY 10603

FOR SALE / LEASE

Aerial Location



Jared Stone

Associate Broker
914 798 4900
jstone@houlihanlawrence.com

Garry Klein

Houlihan Lawrence, Inc.
914 798 4900
gklein@houlihanlawrence.com

Houlihan Lawrence

800 Westchester Ave. Ste. N505
Rye Brook, NY 10573



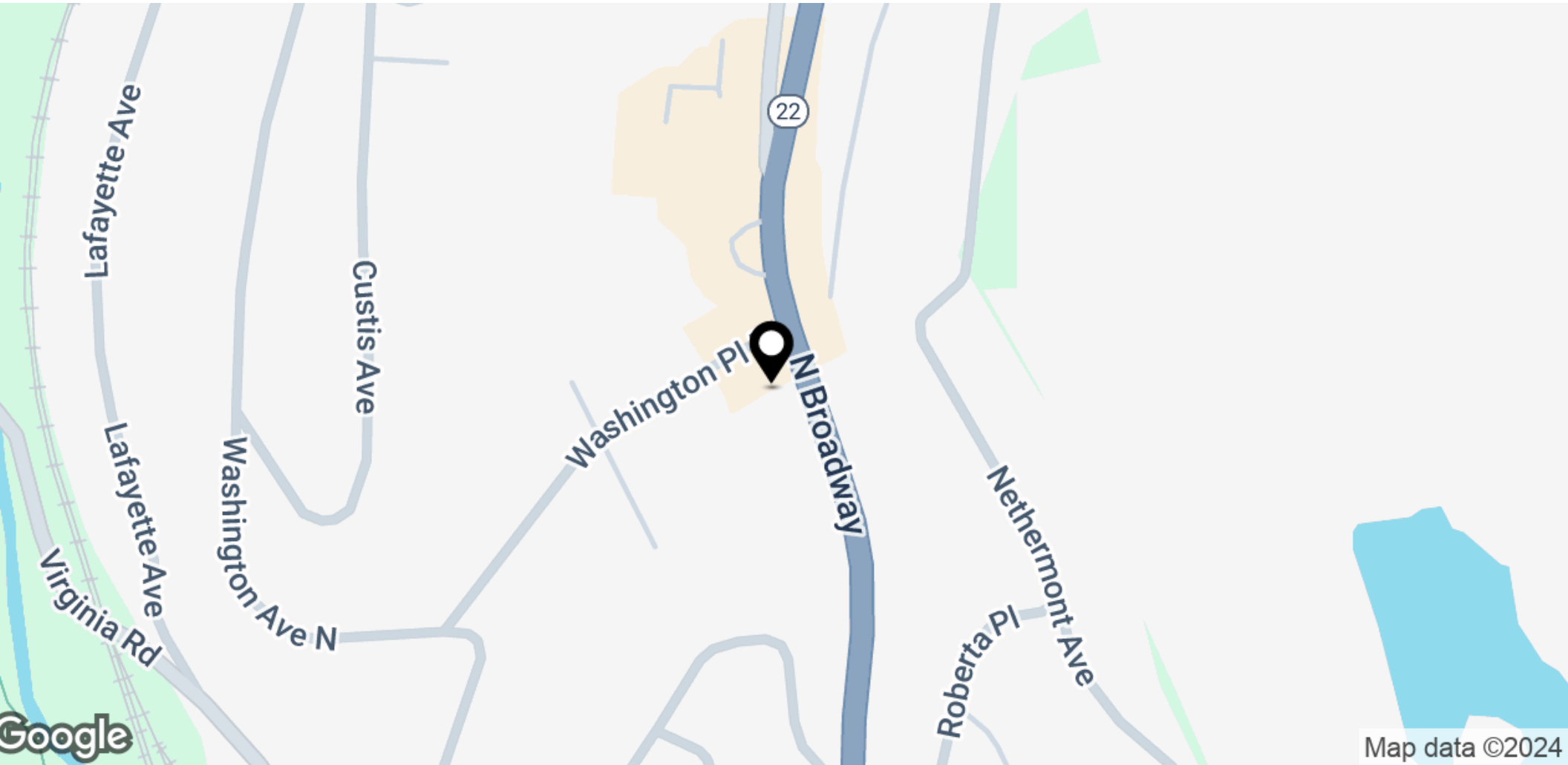
HOULIHAN LAWRENCE
COMMERCIAL

873 N Broadway

White Plains, NY 10603

FOR SALE / LEASE

Location Map



Jared Stone

Associate Broker
914 798 4900
jstone@houlihanlawrence.com

Garry Klein

Houlihan Lawrence, Inc.
914 798 4900
gklein@houlihanlawrence.com

Houlihan Lawrence

800 Westchester Ave. Ste. N505
Rye Brook, NY 10573



HOULIHAN LAWRENCE
COMMERCIAL

873 N Broadway

White Plains, NY 10603

FOR SALE / LEASE

Area Analytics

Population	1 Mile	3 Miles	5 Miles
Total Population	8,093	86,999	170,700
Average Age	42	42	42
Average Age (Male)	40	41	41
Average Age (Female)	43	44	44

Household & Income	1 Mile	3 Miles	5 Miles
Total Households	2,916	33,711	62,310
Persons per HH	2.8	2.6	2.7
Average HH Income	\$178,191	\$164,998	\$197,854
Average House Value	\$670,192	\$722,189	\$854,175
Per Capita Income	\$63,639	\$63,460	\$73,279

Map and demographics data derived from AlphaMap

Jared Stone

Associate Broker
914 798 4900
jstone@houlihanlawrence.com

Garry Klein

Houlihan Lawrence, Inc.
914 798 4900
gklein@houlihanlawrence.com

Houlihan Lawrence

800 Westchester Ave. Ste. N505
Rye Brook, NY 10573



HOULIHAN LAWRENCE
COMMERCIAL