

MOVE IN READY



±230,000 SF | ±198,000 SF | DIVISIBLE TO ±28,000 SF



FORMATION PARK 10

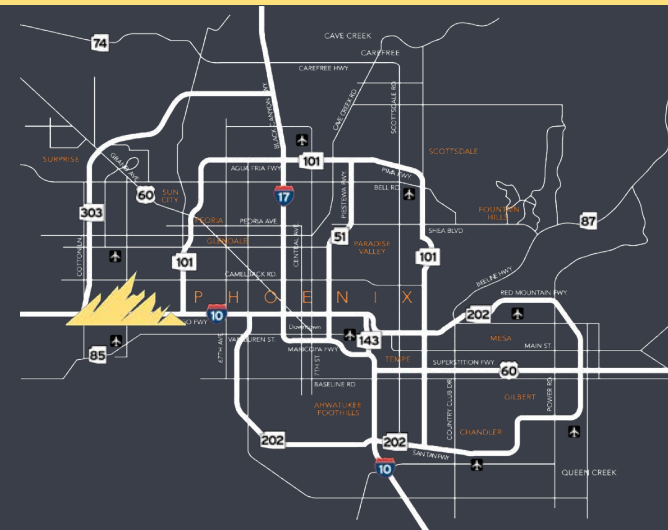
14390 & 14410 W Celebrate Life Way
NEC of Celebrate Life Way & Bullard Ave
Goodyear, AZ

FOR MORE INFORMATION CONTACT:



GARY ANDERSON
Executive Director
602.224.4439
gary.anderson@cushwake.com

NIK VALLENS
Director
602.586.5929
nik.vallens@cushwake.com



LOOP
101

25 Minutes



Bullard Ave



DRIVE TIMES



<1 Minute



3 Minutes



5 Minutes

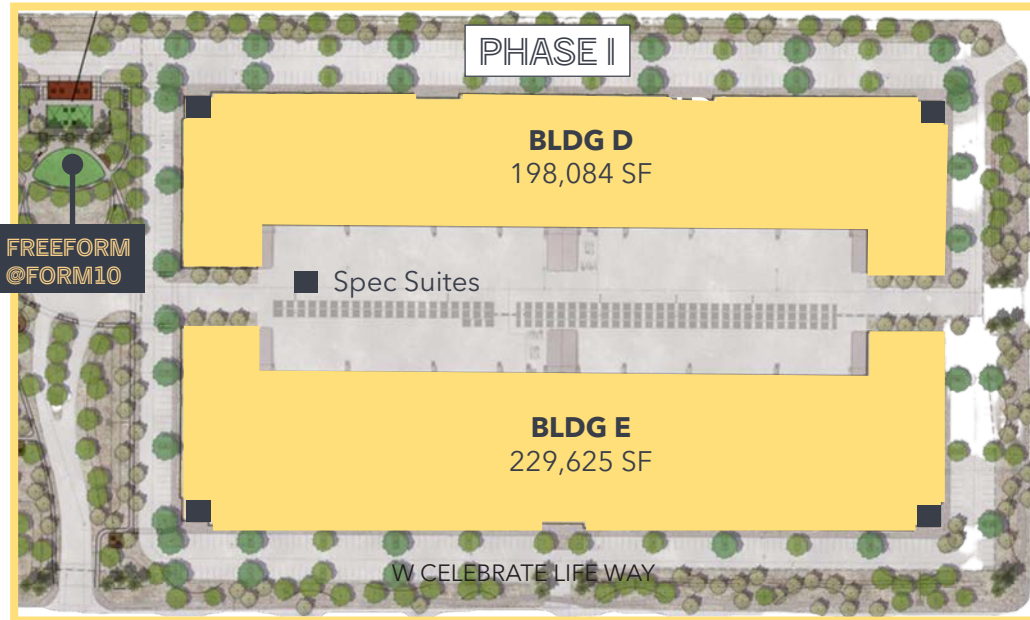


25 Minutes



FORMATION PARK 10

NEC of Celebrate Life Way & Bullard Ave Goodyear, AZ



PROJECT SPECS	BUILDING D	BUILDING E
BUILDING SF	198,084	229,635
DIVISIBLE	28,000	33,000
OFFICE SF	3,200 SF (2)	3,200 SF (2)
CLEAR HEIGHT	32'	32'
DOCK DOORS	48	48
RAMP TO GRADE	2	2
TRUCK COURT DEPTH	200'	200'
WAREHOUSE COOLING	100% HVAC	100% HVAC
ROOF INSULATION	R-38 White Cap	R-38 White Cap
SPRINKLERS	ESFR	ESFR
COLUMN WIDTH	52'	52'
SPEED BAY	60'	60'
BUILDING DEPTH	180'	210'
ELECTRICAL	3000a (Expandable to 6000a)	3000a (Expandable to 6000a)



Leased By:



GARY ANDERSON
Executive Director
602.224.4439
gary.anderson@cushwake.com

NIK VALLENS
Director
602.586.5929
nik.vallens@cushwake.com

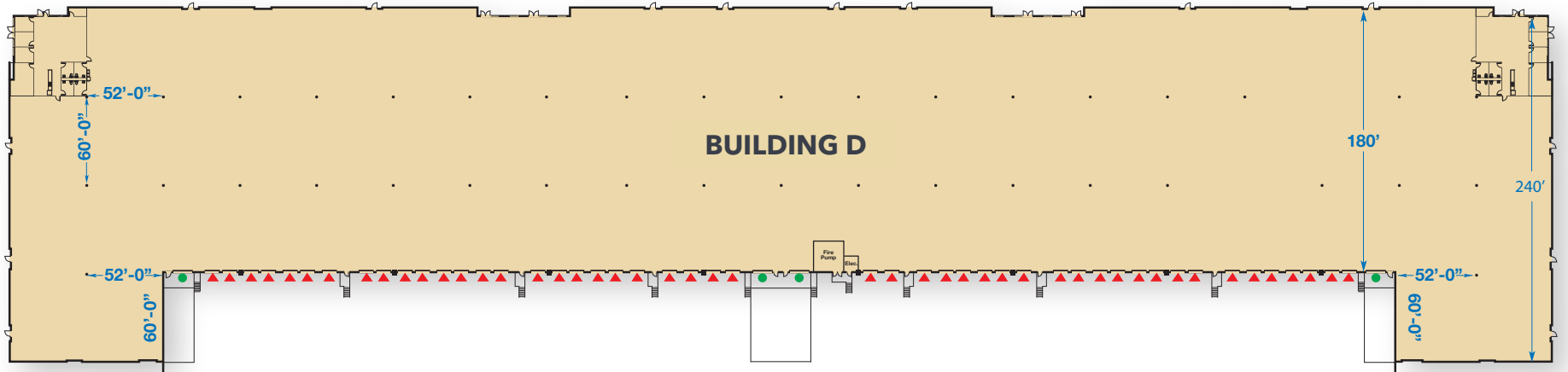
Developed By:





FORMATION PARK 10

NEC of Celebrate Life Way & Bullard Ave Goodyear, AZ



BUILDING D: 14410 W Celebrate Life Way

Building SF	198,084 SF	Clear Height	32'
Divisible	28,000 SF	Sprinklers	ESFR
Office SF	3,200 SF (2)	Column Width	52'
Dock Doors	48	Speed Bay	60'
Ramp to Grade	4	Building Depth	180'
Roof Insulation	R-38 WHITE CAP	Typical Bay SF	9,360SF
Warehouse Cooling	100% HVAC	Truck Court Depth	200'

Leased By:



GARY ANDERSON
Executive Director
602.224.4439
gary.anderson@cushwake.com

NIK VALLENS
Director
602.586.5929
nik.vallens@cushwake.com

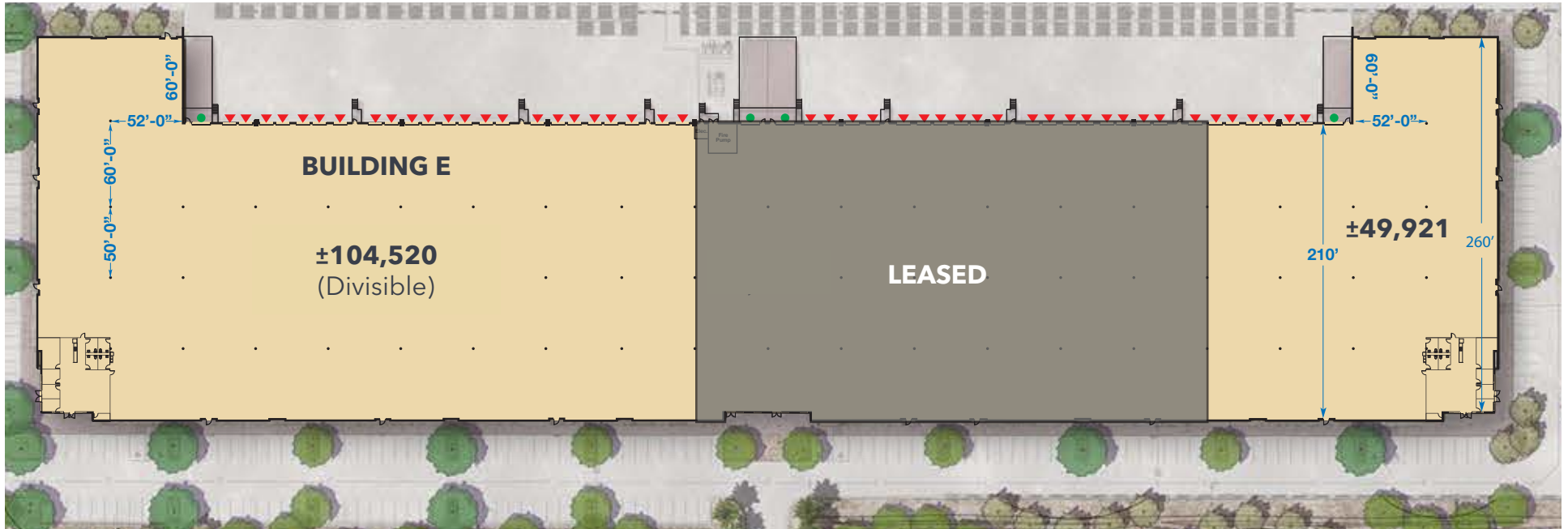
Developed By:





FORMATION PARK 10

NEC of Celebrate Life Way & Bullard Ave Goodyear, AZ



BUILDING E: 14390 W Celebrate Life Way			
Building SF	229,635 SF	Clear Height	32'
Divisible	33,000 SF	Sprinklers	ESFR
Office SF	3,200 SF (2)	Column Width	52'
Dock Doors	48	Speed Bay	60'
Ramp to Grade	4	Building Depth	210'
Roof Insulation	R-38 White Cap	Typical Bay SF	10,920 SF
Warehouse Cooling	100% HVAC	Truck Court Depth	200'

Leased By:

GARY ANDERSON
Executive Director
602.224.4439
gary.anderson@cushwake.com

NIK VALLENS
Director
602.586.5929
nik.vallens@cushwake.com

Developed By:



FREEFORM@ FORMATION PARK 10



TRANSFORMING COMMODITIZED SPACE INTO A SENSE OF PLACE



- A central gathering place for tenants at the heart of FORMATION PARK 10
- 5-acre park featuring amenities including activity lawn, walking trails, shade structures, food truck parking and outdoor dining and gathering areas



Collaborative
Space



Food Truck
Parking



Activity Lawn



Walking Trails



Natural Shade



Table Games

LOCATION HIGHLIGHTS

Easy Access to Entire Phoenix MSA

2.32 M

People within a 30 min.
of FORM10

670 K

FORM10 Can Access 29.3% More
People Within 30-Minutes Than
The Competition

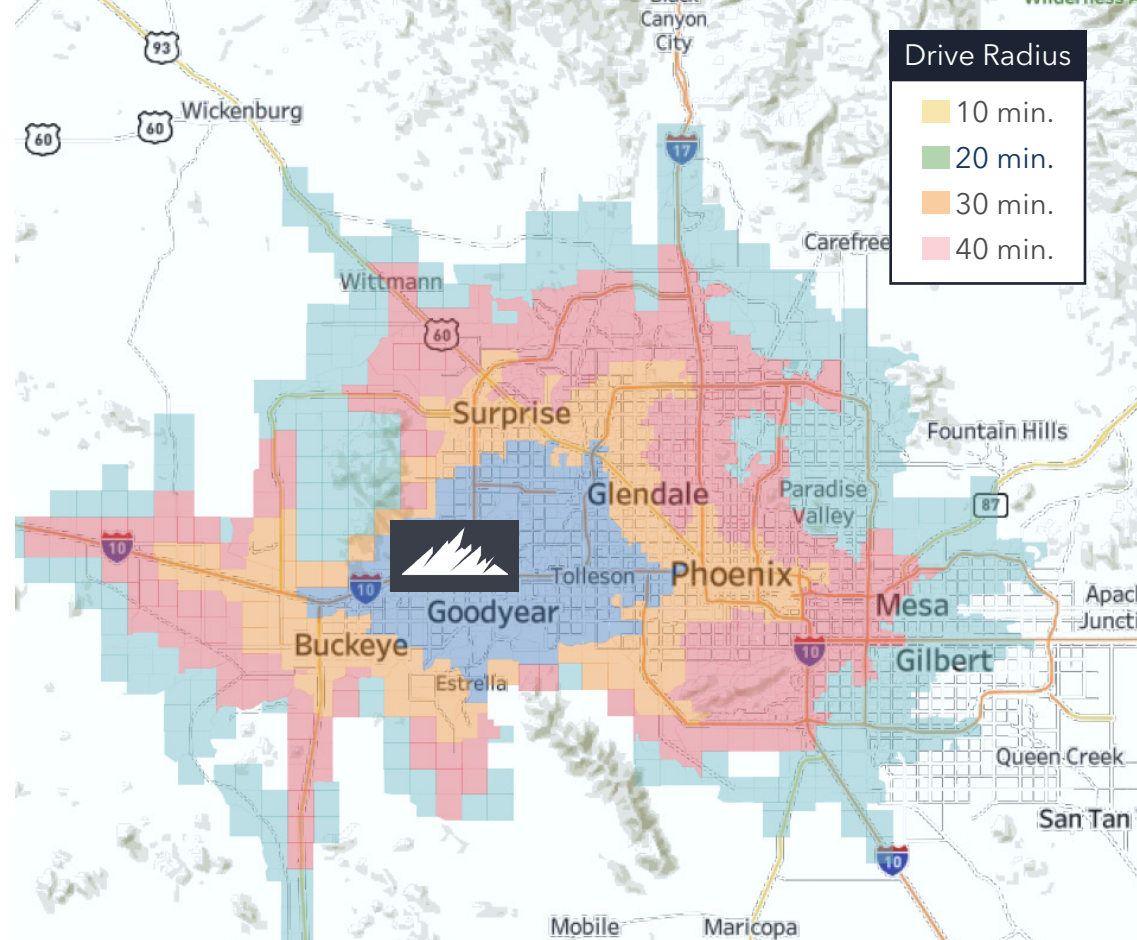
Direct Proximity to Ample Labor

685 K

Targeted labor pool
within 30 min. of FORM10

193 K

FORM10 has Access To a 39.2%
Larger Targeted Labor Pool
within 30 Min Compared To The
Competition



8.0% forecasted 5-year labor
growth near FORM10
(compared to market
average of 4.8%)



208 Quality of life amenities (gyms,
restaurants, coffee shops, etc.) within
2-mi. of FORM10; 43% more than
SW Phoenix average



FORM10 is near more consumer
spend per capita than **9/10**
industrial parks in Phoenix



FORM10 is forecast to have
stronger population growth
(7.7%/year) than **90%** of
industrial parks in Phoenix

ANALYTICS & INSIGHT
PROVIDED BY:



Why is Formation Park 10 right for **YOUR** company?

Our advanced analytics platform, LUMINARY, allows us to
provide occupiers unrivaled insights that enhance their site
selection process.

If you're interested in a **custom analytics report tailored to
your company's specific needs & objectives**, please reach
out to mgilbert@formation-interests.com.



FOR MORE INFORMATION CONTACT:



GARY ANDERSON
Executive Director
602.224.4439
gary.anderson@cushwake.com

NIK VALLENS
Director
602.586.5929
nik.vallens@cushwake.com

DEVELOPED BY:



©2026 Cushman & Wakefield. All rights reserved. The information contained in this communication is strictly confidential. This information has been obtained from sources believed to be reliable but has not been verified. NO WARRANTY OR REPRESENTATION, EXPRESS OR IMPLIED, IS MADE AS TO THE CONDITION OF THE PROPERTY (OR PROPERTIES) REFERENCED HEREIN OR AS TO THE ACCURACY OR COMPLETENESS OF THE INFORMATION CONTAINED HEREIN, AND SAME IS SUBMITTED SUBJECT TO ERRORS, OMISSIONS, CHANGE OF PRICE, RENTAL OR OTHER CONDITIONS, WITHDRAWAL WITHOUT NOTICE, AND TO ANY SPECIAL LISTING CONDITIONS IMPOSED BY THE PROPERTY OWNER(S). ANY PROJECTIONS, OPINIONS OR ESTIMATES ARE SUBJECT TO UNCERTAINTY AND DO NOT SIGNIFY CURRENT OR FUTURE PROPERTY PERFORMANCE.