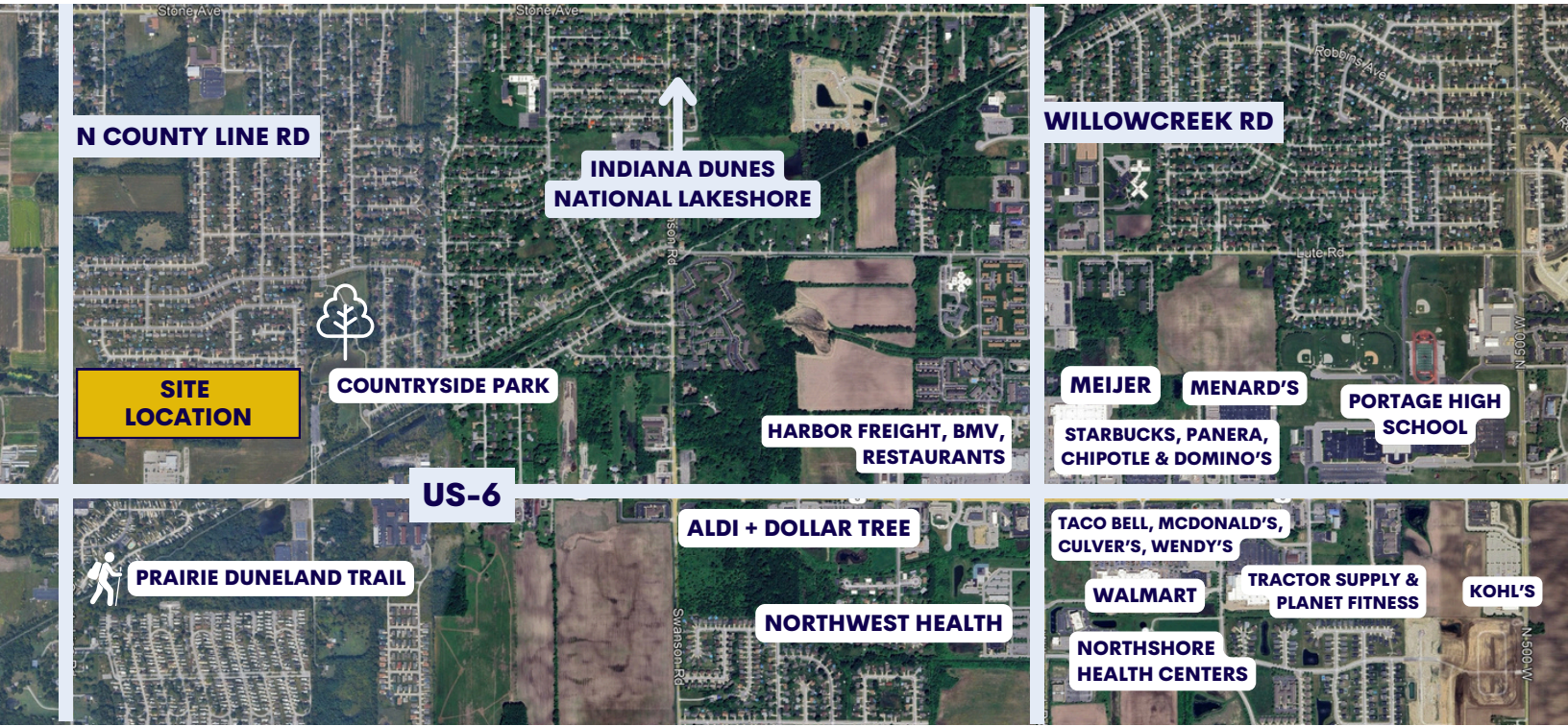


LAND FOR SALE

US 6 & N COUNTY LINE ROAD
PORTAGE, IN 46368



PROPERTY FEATURES

- 51 Acres of Prime Residential Land Located Adjacent to Portage's 33 Acre Countryside Park, Providing Direct Access to the Prairie Duneland Trail System
- Located Within 2 Miles of Portage's Main Retail Corridor, Offering Convenient Access to Grocery, Shopping, Dining, Entertainment & Medical Facilities
- Portage Township School District & City Services
- Close to the Indiana Dunes National Lakeshore & Other Natural Amenities in Beautiful Porter County, Indiana
- City of Portage Utilities in Place to Serve Development
- City of Portage Preliminary Support for Patio Home Development Concepts



CONTACT US

219-764-3104

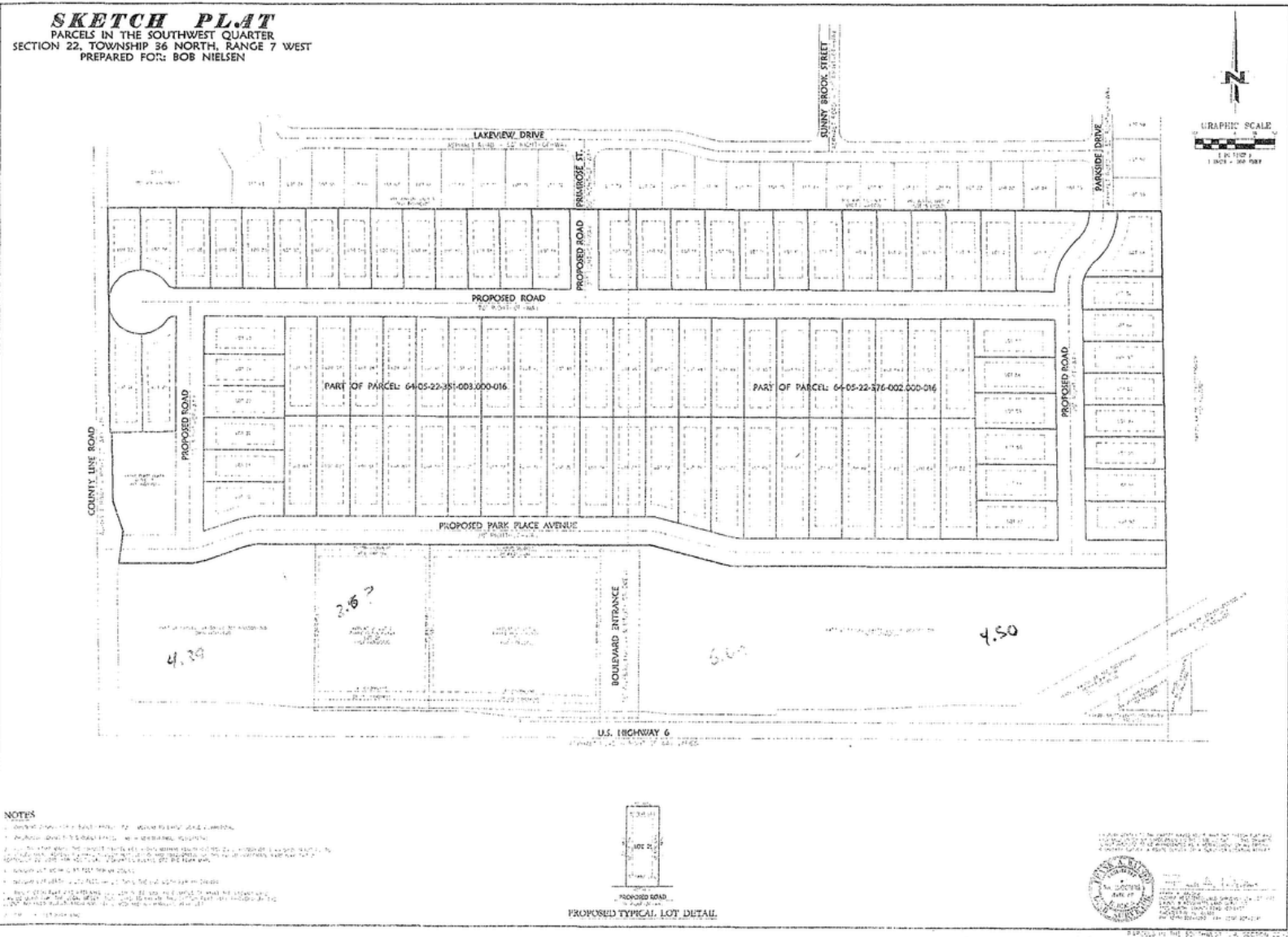
Michael C. O'Connor, SVP - Leasing & Development
moconnor@holladayproperties.com

6370 Ameriplex Drive, Suite 110 Portage, IN 46368
holladayproperties.com

PRELIMINARY PLAT

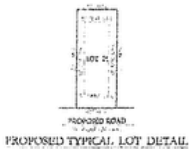
LAND | PORTAGE, IN

51 Acres for Residential Development



NOTES

1. ALL DIMENSIONS ARE IN FEET AND DECIMALS THEREOF.
2. THE PLAT SHOWS THE PROPOSED LOTS AND ROADS. THE ACTUAL LOTS AND ROADS SHALL BE AS SHOWN ON THE GROUND SURVEY.
3. THE PLAT SHOWS THE PROPOSED LOTS AND ROADS. THE ACTUAL LOTS AND ROADS SHALL BE AS SHOWN ON THE GROUND SURVEY.
4. THE PLAT SHOWS THE PROPOSED LOTS AND ROADS. THE ACTUAL LOTS AND ROADS SHALL BE AS SHOWN ON THE GROUND SURVEY.
5. THE PLAT SHOWS THE PROPOSED LOTS AND ROADS. THE ACTUAL LOTS AND ROADS SHALL BE AS SHOWN ON THE GROUND SURVEY.
6. THE PLAT SHOWS THE PROPOSED LOTS AND ROADS. THE ACTUAL LOTS AND ROADS SHALL BE AS SHOWN ON THE GROUND SURVEY.
7. THE PLAT SHOWS THE PROPOSED LOTS AND ROADS. THE ACTUAL LOTS AND ROADS SHALL BE AS SHOWN ON THE GROUND SURVEY.
8. THE PLAT SHOWS THE PROPOSED LOTS AND ROADS. THE ACTUAL LOTS AND ROADS SHALL BE AS SHOWN ON THE GROUND SURVEY.
9. THE PLAT SHOWS THE PROPOSED LOTS AND ROADS. THE ACTUAL LOTS AND ROADS SHALL BE AS SHOWN ON THE GROUND SURVEY.
10. THE PLAT SHOWS THE PROPOSED LOTS AND ROADS. THE ACTUAL LOTS AND ROADS SHALL BE AS SHOWN ON THE GROUND SURVEY.



PLAT TO BE FILED IN THE PUBLIC RECORDS OF THE CLERK OF THE COUNTY OF PORTAGE, INDIANA, FOR RECORDING. THE PLAT IS SUBJECT TO THE TERMS AND CONDITIONS OF THE SUBDIVISION AGREEMENT ON FILE WITH THE CLERK OF THE COUNTY OF PORTAGE, INDIANA.

APPROVED FOR THE SUBDIVISION:

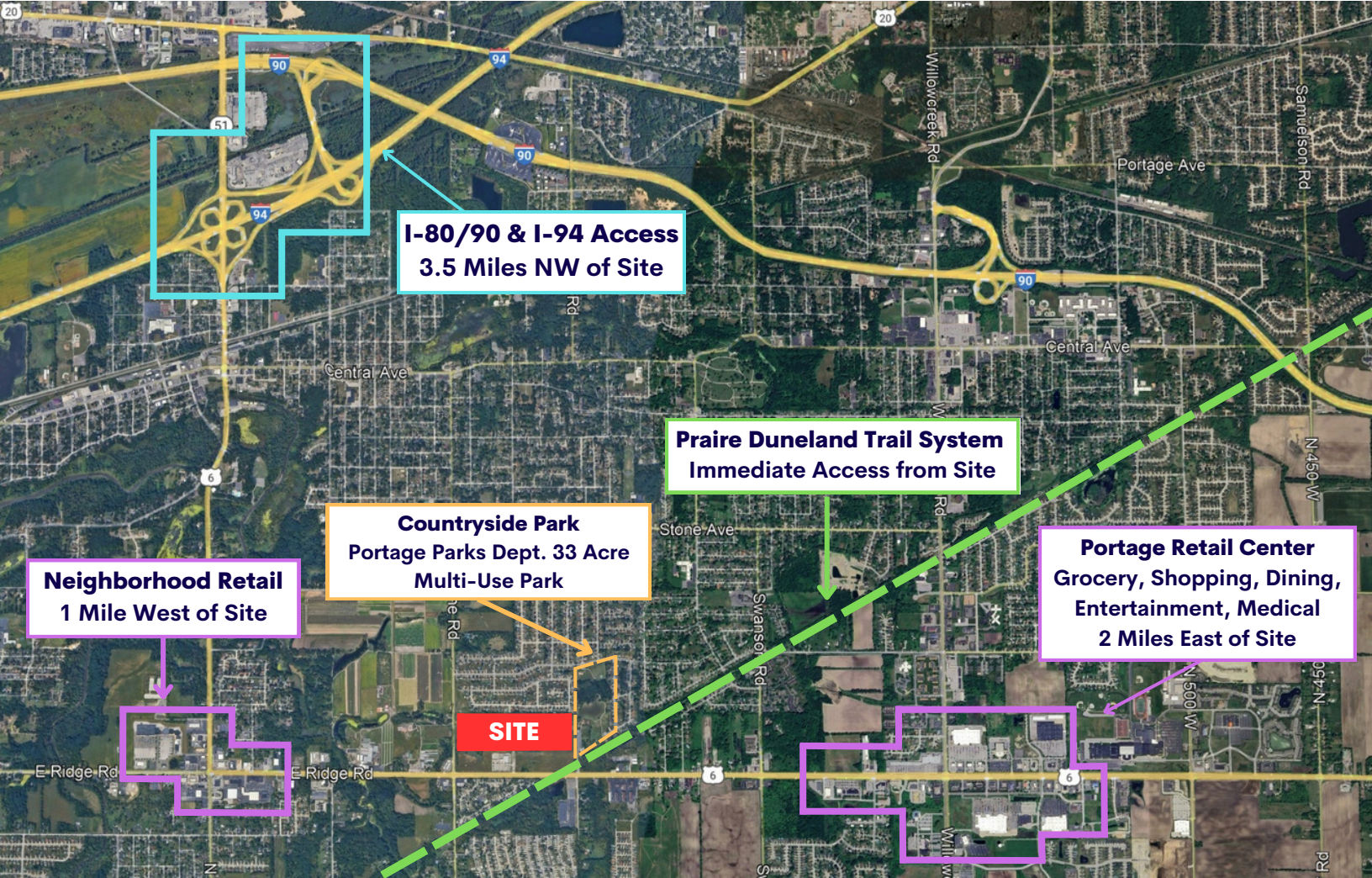
 Michael C. O'Connor, SVP - Leasing & Development

CONTACT US TODAY!
219-764-3104

Michael C. O'Connor, SVP - Leasing & Development
 moconnor@holladayproperties.com
 6370 Ameriplex Drive, Suite 110 Portage, IN 46368
 holladayproperties.com

LOT LOCATION

US-6 & N COUNTY LINE RD
PORTAGE, IN 46383



CONTACT US TODAY!
219-764-3104

Michael C. O'Connor, SVP - Leasing & Development
moconnor@holladayproperties.com

6370 Ameriplex Drive, Suite 110 Portage, IN 46368
holladayproperties.com