

HERITAGE LAW OFFICE

FOR LEASE



PROPERTY DETAILS

898 S. State St., Orem, UT 84097

- Available Suites:
 - » Suite 105: 827 RSF, \$750/MO/FS
 - » Suite 200: 238 RSF, \$850/MO/FS
 - » Suite 300: 234 RSF, \$750/MO/FS
- Located on State Street
- Utopia Fiber Available
- Access to shared Kitchen, Breakroom, and Conference Room

2025 DEMOS

EST. POPULATION

1 MILE » 20,266
3 MILE » 141,960
5 MILE » 239,072

EST. HOUSEHOLDS

1 MILE » 6,595
3 MILE » 43,207
5 MILE » 73,155

EST. AVERAGE HH INCOME

1 MILE » \$114,996
3 MILE » \$114,156
5 MILE » \$109,951



MARY STREET, CCIM
mary@summitutahcre.com
direct: 801.358.6279
office: 801.435.5005

[View Profile](#)

BILL STREET
bill@summitutahcre.com
direct: 801.376.5282
office: 801.435.5005

[View Profile](#)

FULL SERVICE COMMERCIAL REAL ESTATE 1875 S STATE ST., SUITE 1000, PO BOX 970432, OREM, UT 84097



MARY STREET, CCIM
mary@summitutahcre.com
direct: 801.358.6279
office: 801.435.5005

[View Profile](#)

BILL STREET
bill@summitutahcre.com
direct: 801.376.5282
office: 801.435.5005

[View Profile](#)

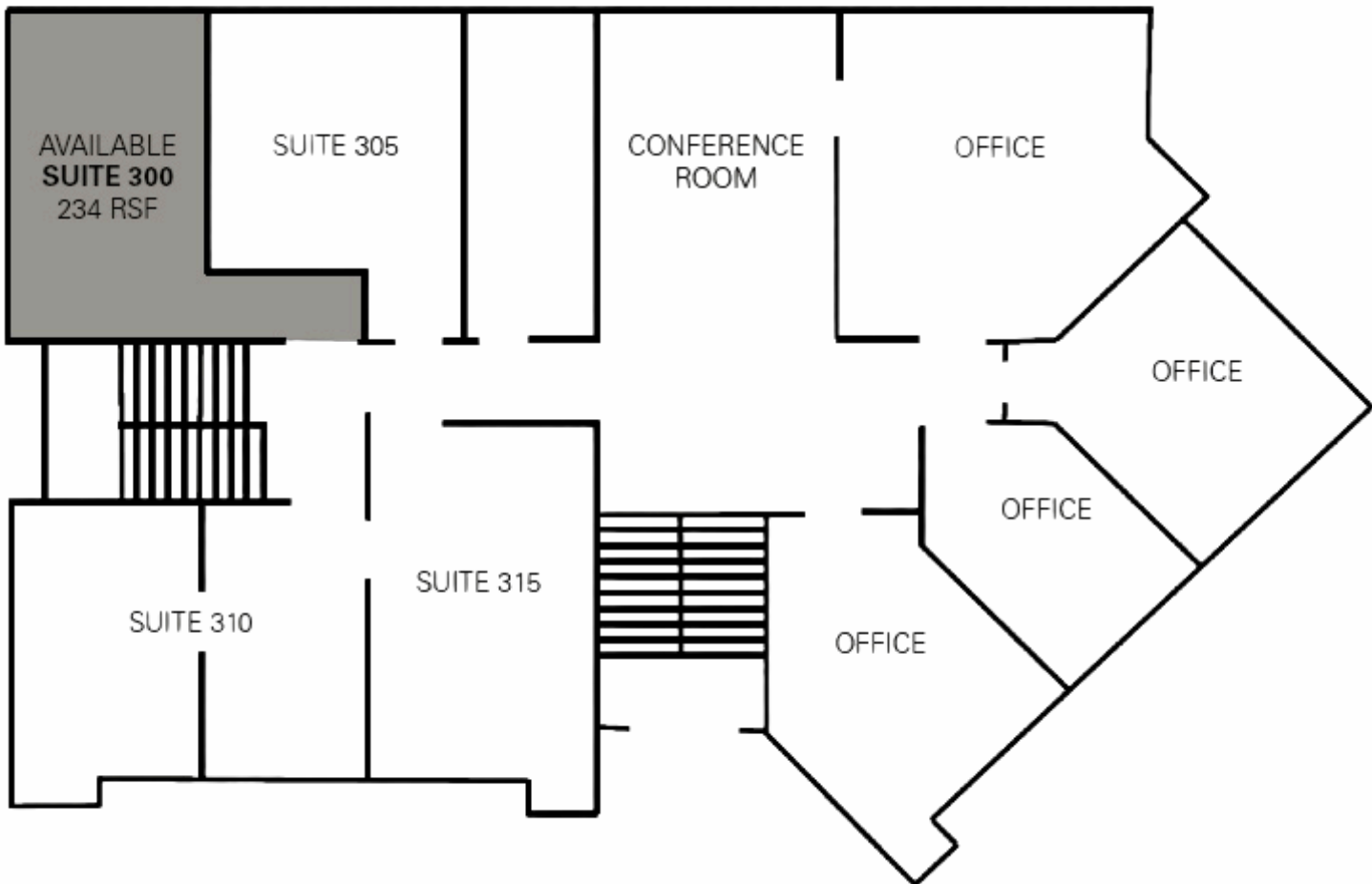
FULL SERVICE COMMERCIAL REAL ESTATE 1875 S STATE ST., SUITE 1000, PO BOX 970432, OREM, UT 84097

This statement with the information it contains is given with the understanding that all negotiations relating to the purchase, renting or leasing of the property described above shall be conducted through this office.

HERITAGE LAW OFFICE

FLOOR PLAN

UPPER LEVEL



MARY STREET, CCIM
mary@summitutahcre.com
direct: 801.358.6279
office: 801.435.5005

[View Profile](#)

BILL STREET
bill@summitutahcre.com
direct: 801.376.5282
office: 801.435.5005

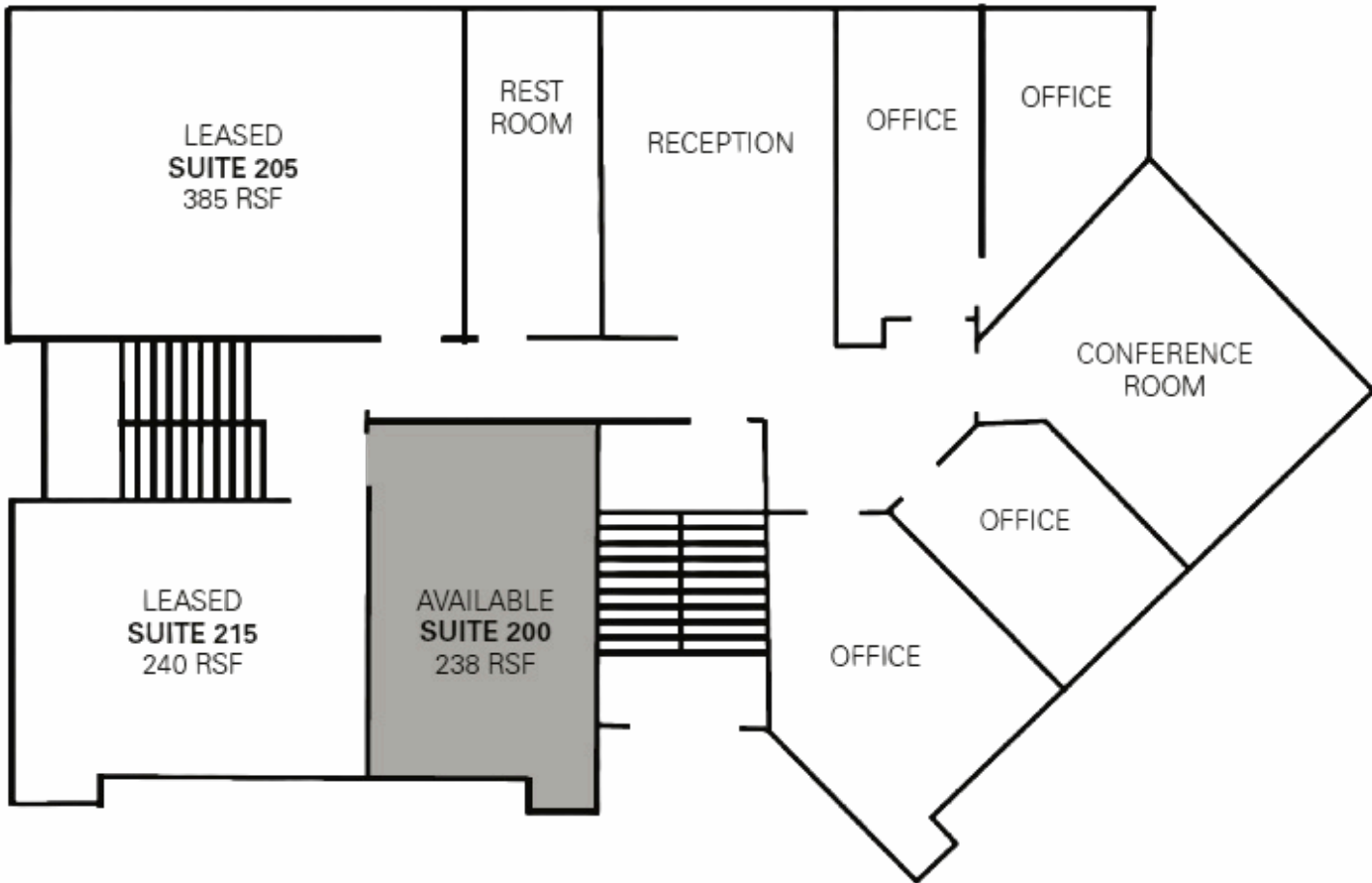
[View Profile](#)

FULL SERVICE COMMERCIAL REAL ESTATE 1875 S STATE ST., SUITE 1000, PO BOX 970432, OREM, UT 84097

HERITAGE LAW OFFICE

FLOOR PLAN

MAIN LEVEL



MARY STREET, CCIM
mary@summitutahcre.com
direct: 801.358.6279
office: 801.435.5005

[View Profile](#)

BILL STREET
bill@summitutahcre.com
direct: 801.376.5282
office: 801.435.5005

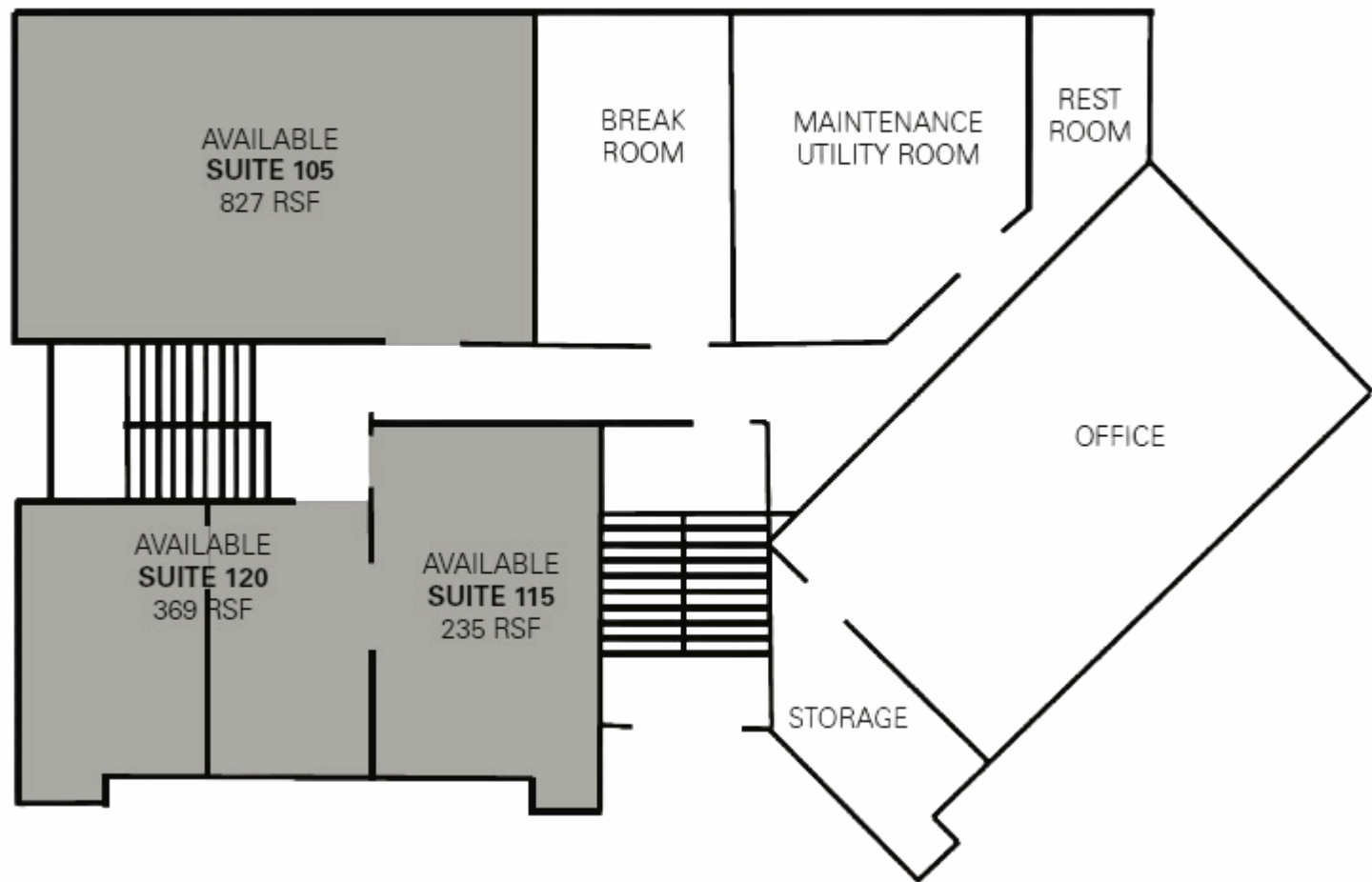
[View Profile](#)

FULL SERVICE COMMERCIAL REAL ESTATE 1875 S STATE ST., SUITE 1000, PO BOX 970432, OREM, UT 84097

HERITAGE LAW OFFICE

FLOOR PLAN

LOWER LEVEL



MARY STREET, CCIM
mary@summitutahcre.com
direct: 801.358.6279
office: 801.435.5005

[View Profile](#)

BILL STREET
bill@summitutahcre.com
direct: 801.376.5282
office: 801.435.5005

[View Profile](#)

FULL SERVICE COMMERCIAL REAL ESTATE 1875 S STATE ST., SUITE 1000, PO BOX 970432, OREM, UT 84097