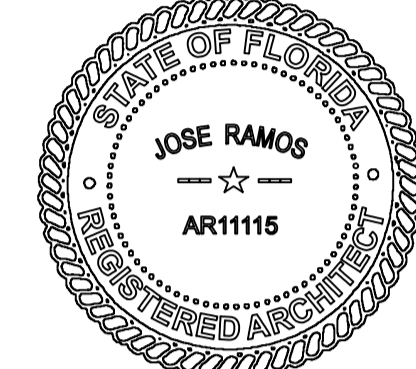


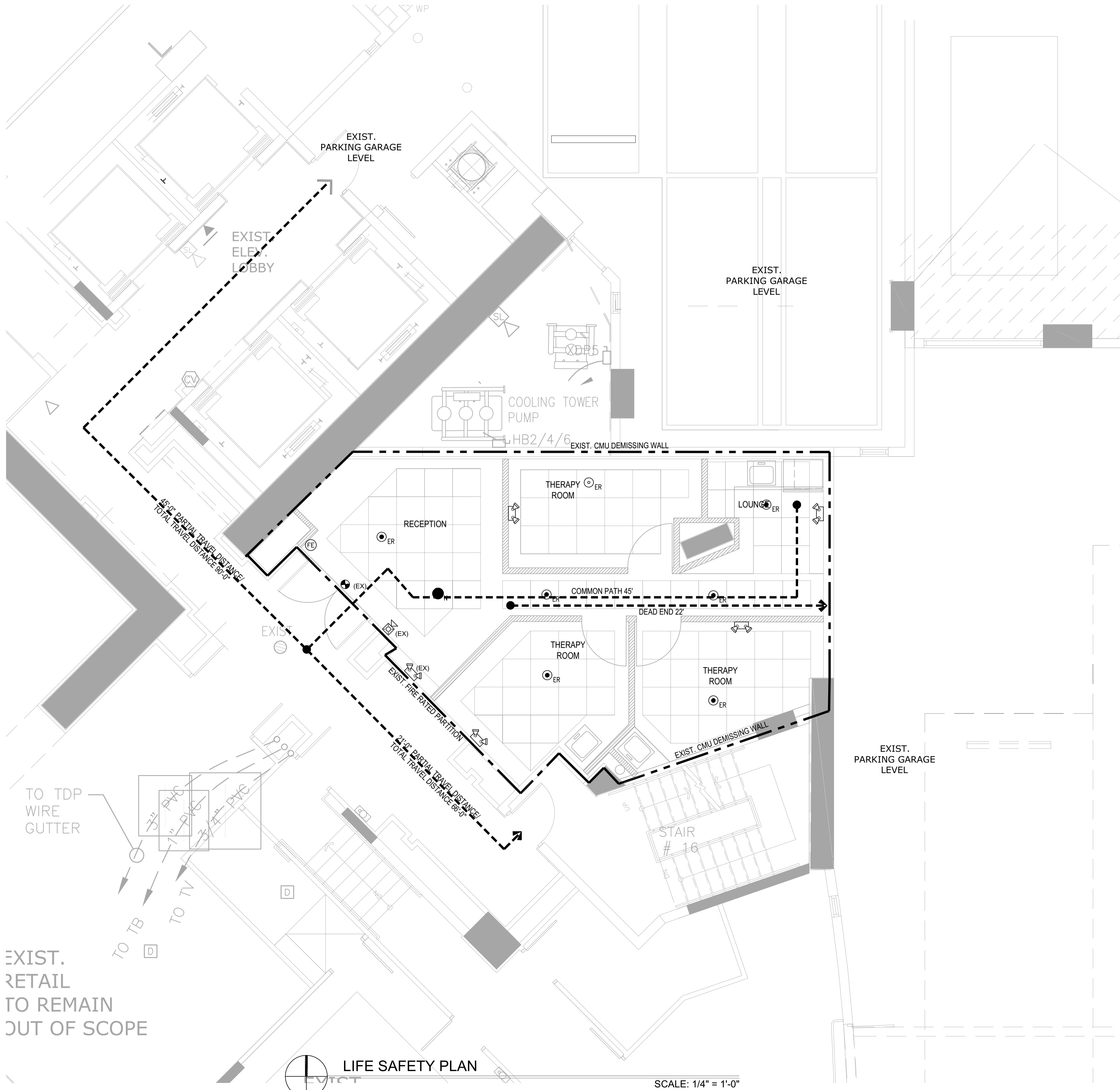


ZORINA MONTIEL
PH. 786.546.3080
JOSE RAMOS AR 11115
PH. 305.506.7388



SEAL:
Digitally signed
by Jose Ramos
Date:
2021.08.27
18:22:29 -04'00'

ALL IDEAS, DESIGNS, ARRANGEMENTS, AND PLANS INDICATED OR REPRESENTED BY THIS DRAWING ARE OWNED BY AND THE PROPERTY OF RAMOS ARCHITECTS & ASSOC. AND WERE CREATED, EVOLVED AND DEVELOPED FOR USE ON AND IN CONNECTION WITH THE SPECIFIED PROJECT. NONE OF SUCH IDEAS, DESIGNS, ARRANGEMENTS OR PLANS SHALL BE USED BY OR DISCLOSED TO ANY PERSON, FIRM OR CORPORATION FOR ANY PURPOSE WHATSOEVER WITHOUT THE WRITTEN PERMISSION OF RAMOS ARCHITECTS & ASSOCIATES. WRITTEN DIMENSIONS OF THESE DRAWINGS SHALL HAVE PRECEDENCE OVER SCALED DIMENSIONS. CONTRACTORS SHALL VERIFY AND BE RESPONSIBLE FOR ALL DIMENSIONS AND CONDITIONS ON THE JOB AND THIS OFFICE MUST BE NOTIFIED OF ANY VARIATIONS FROM THE DIMENSIONS AND CONDITIONS SHOWN BY THESE DRAWINGS. SHOP DETAILS MUST BE SUBMITTED TO THIS OFFICE FOR APPROVAL BEFORE PROCEEDING WITH FABRICATION. ALL RIGHTS RESERVED. © 2021



FIRE CODE IN EFFECT
FLORIDA FIRE PREVENTION CODE (FFPC) 7TH EDITION, EFFECTIVE DECEMBER 31, 2020 WHICH INCLUDES NFPA 101, 2018 EDITION, NFPA 1, 2018 EDITION, & STATE STATUTES, 2018 EDITION, (ADOPTED REFERENCED PUBLICATIONS FOUND HEREIN)

LEGEND

- EXIT LIGHT
- EMERGENCY LIGHT
- FIRE EXTINGUISHER MOUNTED @ 60" A.F.F. TO THE HANDLE
- COMBINATION FIRE ALARM HORN/STROBE.
- PENDANT TYPE SPRINKLER HEAD
- PENDANT TYPE SPRINKLER HEAD
- EXISTING RELOCATED
- NEW

FIRE RESISTANCE SEPARATION:

- EXISTING 1 HR FIRE RATED PARTITION
- EXISTING 2 HR FIRE RATED WALL
- NEW INTERIOR PARTITION WALL TYPE 2.0 HR FIRE RATED
- NEW INTERIOR PARTITION WALL TYPE 3 - 1 HR. FIRE RATED

LIFE SAFETY PLAN NOTES

1. FIRE EXTINGUISHER SHALL HAVE A MIN. RATING 2A-10-B-C 5 LBS MULTI-PURPOSE PORTABLE FOR GLASS A HAZARD TO BE INSTALLED 48" A.F.F. TO TOP OF HANDLE. NOT EXCEED 75' TRAVEL DISTANCE FROM ANY PORTION OF THE BUILDING IN ACCORDANCE WITH 2020 FFP/NFPA 10-2018, SECTION 6.2, TABLE 6.2.1.1. THEY WILL ALSO BE CURRENTLY TAGGED BY A LICENSED FIRE EQUIPMENT COMPANY. ADDITIONAL FIRE EXTINGUISHERS MAY BE REQUIRED BY THE FIRE INSPECTOR AT THE TIME OF THE FIRE FINAL.
2. ALL DOORS IN THE MEAN OF EGRESS SHALL BE SINGLE ACTION RELEASE AND SHALL NOT REQUIRE THE USE OF A KEY, TOOL, OR SPECIAL KNOWLEDGE TO OPEN FROM EGRESS SIDE SHALL COMPLY WITH NFPA 101.7.2.1.5.1, AND SHALL BE PROVIDED WITH A SELF-CLOSING DEVICE IN ACCORDANCE WITH 2020 FFP/NFPA 101-2018, SECTIONS 7.2.1.8 AND 7.2.1.5.2.
3. EXIT SIGNS & EMERGENCY LIGHTS WITH BATTERY BACKUP RATED FOR 90 MIN.
4. ALL INTERIOR WALL AND CEILING FINISH MATERIALS PROPOSED CAN BE GROUPED IN CLASS C IN ACCORDANCE WITH THEIR FLAME SPREAD AND SMOKE-DEVELOPED INDEXES, AND COMPLY WITH THE REQUIREMENTS OF 2020 FBC, 7TH EDITION, TABLE 903.11 FOR A STORAGE BUILDING, PROTECTED THROUGHOUT BY AND APPROVED, SUPERVISED, AUTOMATIC SPRINKLER SYSTEM IN ACCORDANCE WITH 2020 FBC, 7TH EDITION, SECTION 903.3.1.1, AND 2020 FFP/NFPA 101-2018, SECTION 9.7.1

OCCUPANT LOAD AND EGRESS WIDTHS

ROOM NAME	USE	LOAD FACTOR	AREA	OCCUPANT LOAD	MIN. REQUIRED WIDTH	
					DOOR (.2)	STAIR (.3)
SPA	BUSINESS	1PER./150 GSF	700 SF	5 PEOPLE		
TOTAL OCCUPANT LOAD				5 PEOPLE	1	1.5

OCCUPANCY /FIRE SAFETY

OCCUPANCY CLASSIFICATION	BUSINESS
FIRE PROTECTION SYSTEM	SPRINKLERED BUILDING FIRE ALARM

MEANS OF EGRESS REQUIREMENTS

OCCUPANCY CLASSIFICATION	MAXIMUM TRAVEL DISTANCE TO EXIT (ft)		MAXIMUM COMMON PATH OF TRAVEL (ft)		MAXIMUM DEAD END CORRIDOR LENGTH (ft)		MINIMUM DOOR CLEAR WIDTH (in)	MIN STAIR CLEAR WIDTH (in)
	UNSPRK.	SPRK.	UNSPRK.	SPRK.	UNSPRK.	SPRK.		
BUSINESS	200	75	100	20	50	32		44

NOTES:
1. TRAVEL DISTANCE, DEAD END AND COMMON PATH OF TRAVEL LIMITS PROVIDED IN ACCORDANCE WITH 2020 FBC (7TH EDITION), TABLE 1017.2 AND 2017 FFP/NFPA 101-2018, TABLES 42.2.5 AND 42.2.6

PROJECT:
QUANTUM ON THE BAY
UNIT 212
TENANT SPACE INTERIOR RENOV.
1900 NORTHBAYSHORE DRIVE, UNIT 212
MIAMI, FL 33132

DATE	07/23/21

DRAWING TITLE:
LIFE SAFETY PLAN

DRAWN BY:	CHECKED BY:
ZM	JR
SCALE: AS NOTED	

PROJECT NUMBER
21189

SHEET
LS-101

EXIST. RETAIL TO REMAIN OUT OF SCOPE