

Retail & Office Space for Lease 57 S 6th Street

Williamsburg, Brooklyn, NY

Location:

Entrances on Wythe Avenue & South 6th Street

Retail Space:

Ground Floor: 1,655 SF

Second Floor: 3,425 SF

Frontage:

~70 FT on South 6th Street

~35 FT on Wythe Avenue

Ceiling Heights:

Ground Floor: 13 FT

Second Floor: 10 FT

Price:

Upon request

Highlights:

- Newly developed Retail & Office Space available in a mixed- use building with luxury residences above
- Close proximity to Domino Park
- Located 5 minutes walking distance from the Marcy Avenue J, M, & Z-trains subway stop
- Landlord can deliver a custom build-out for Tenant
- Dedicated Entrance & Signage for Second Floor Space



Local Attractions:



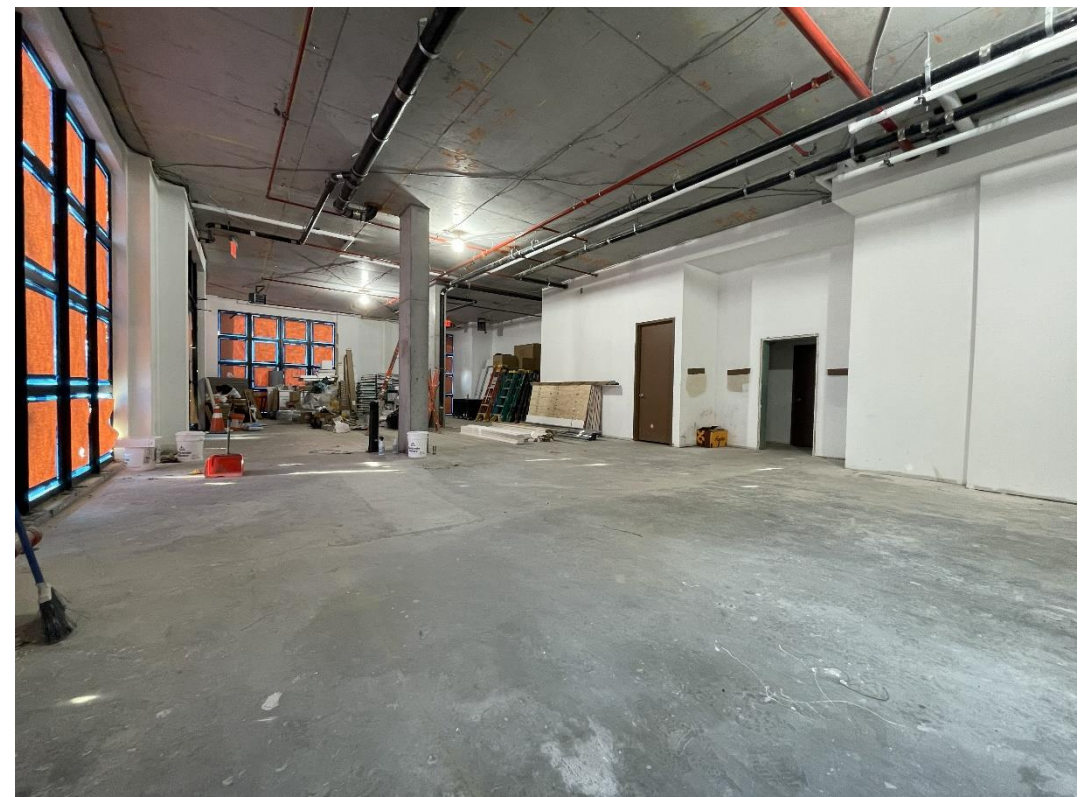
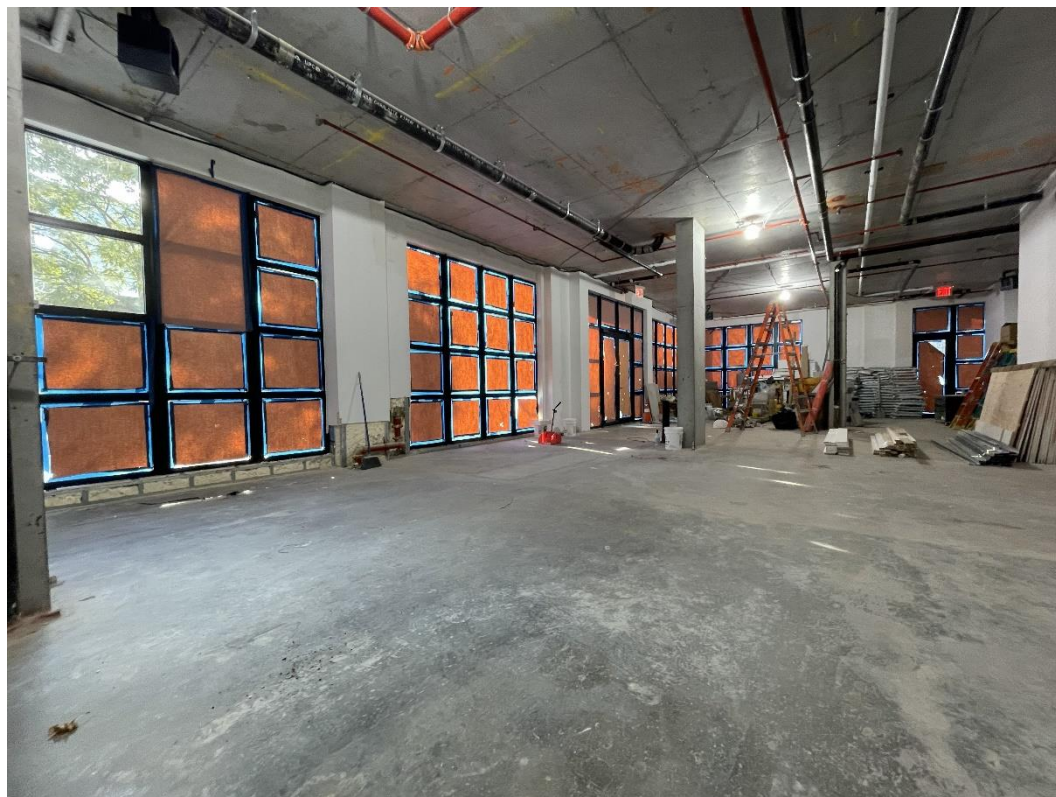
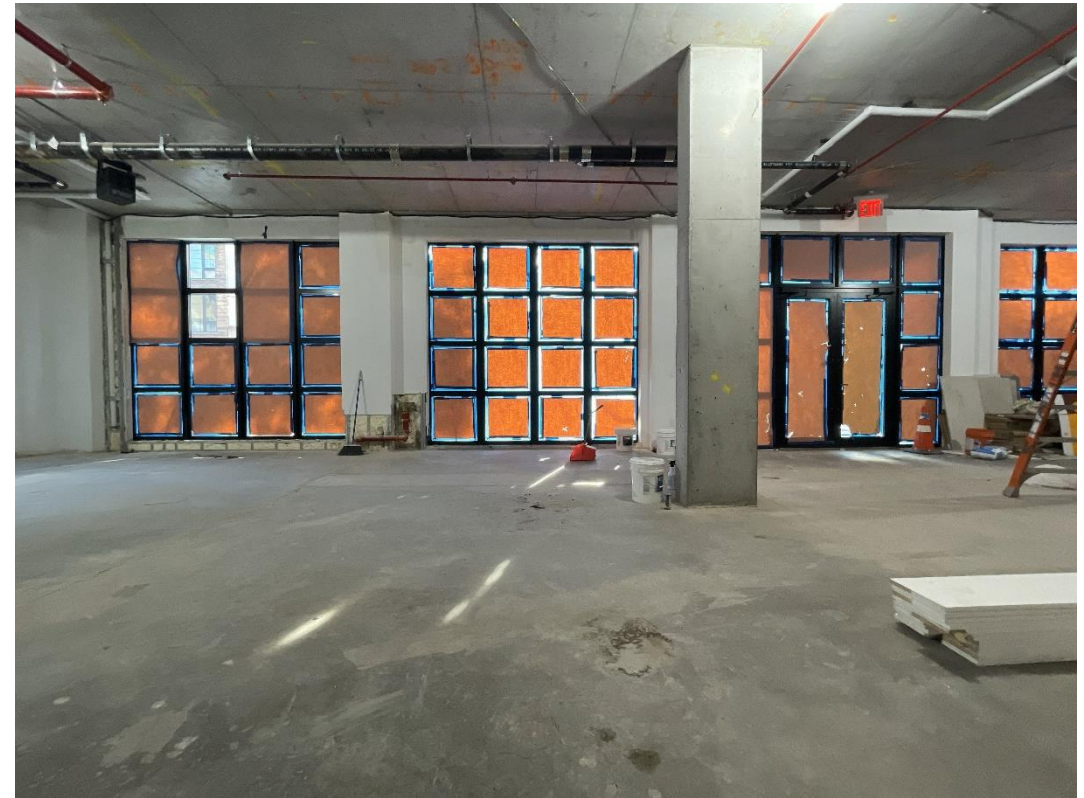
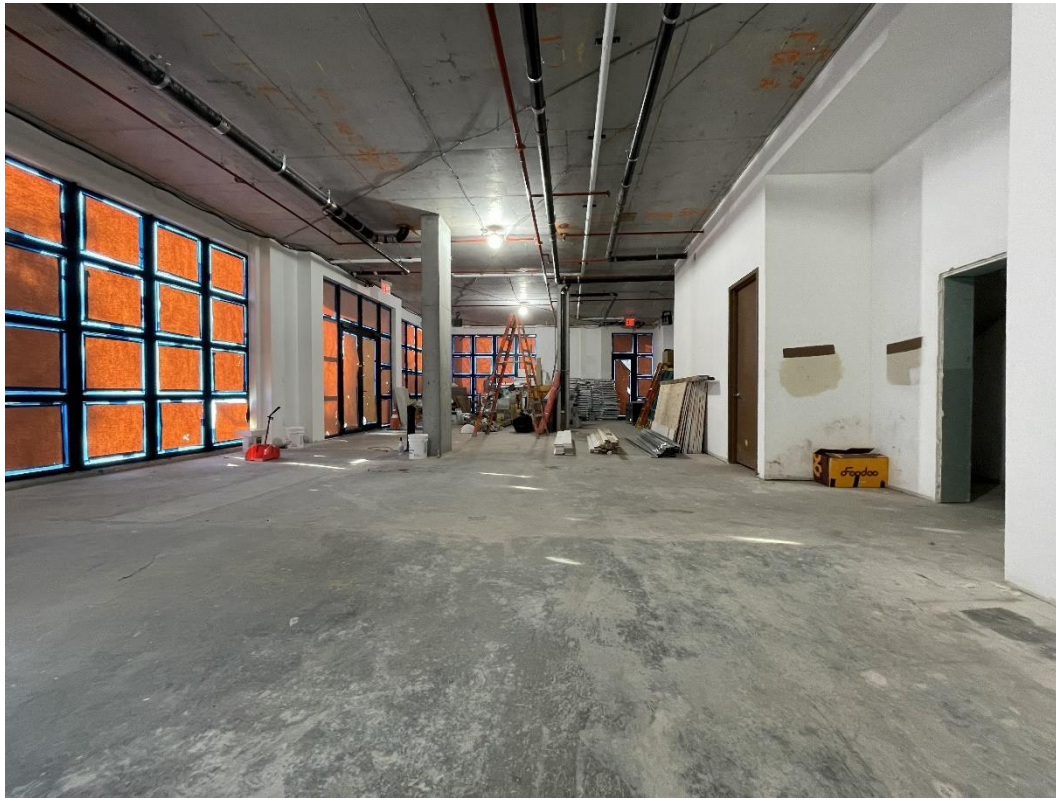
**SLOAN
REAL
ESTATE**

**Call/Text:
516 350 2621**

57 S 6th Street

Ground Floor Photos

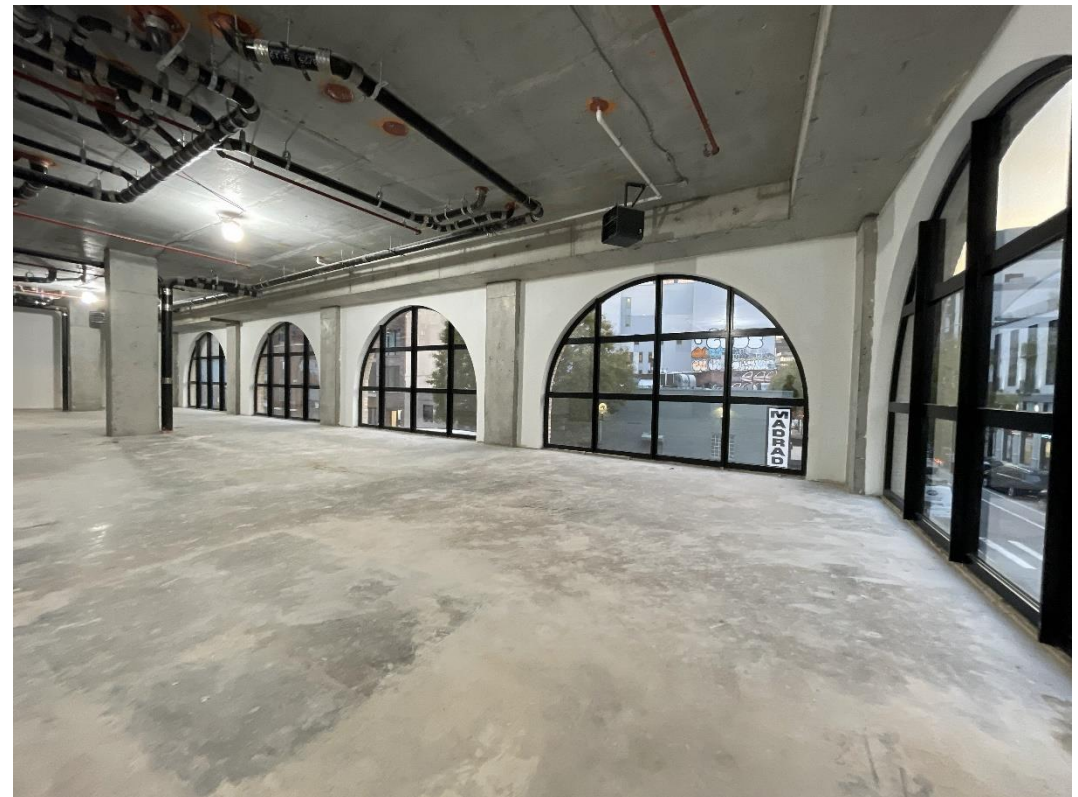
Williamsburg, Brooklyn, NY



57 S 6th Street

Second Floor Photos

Williamsburg, Brooklyn, NY

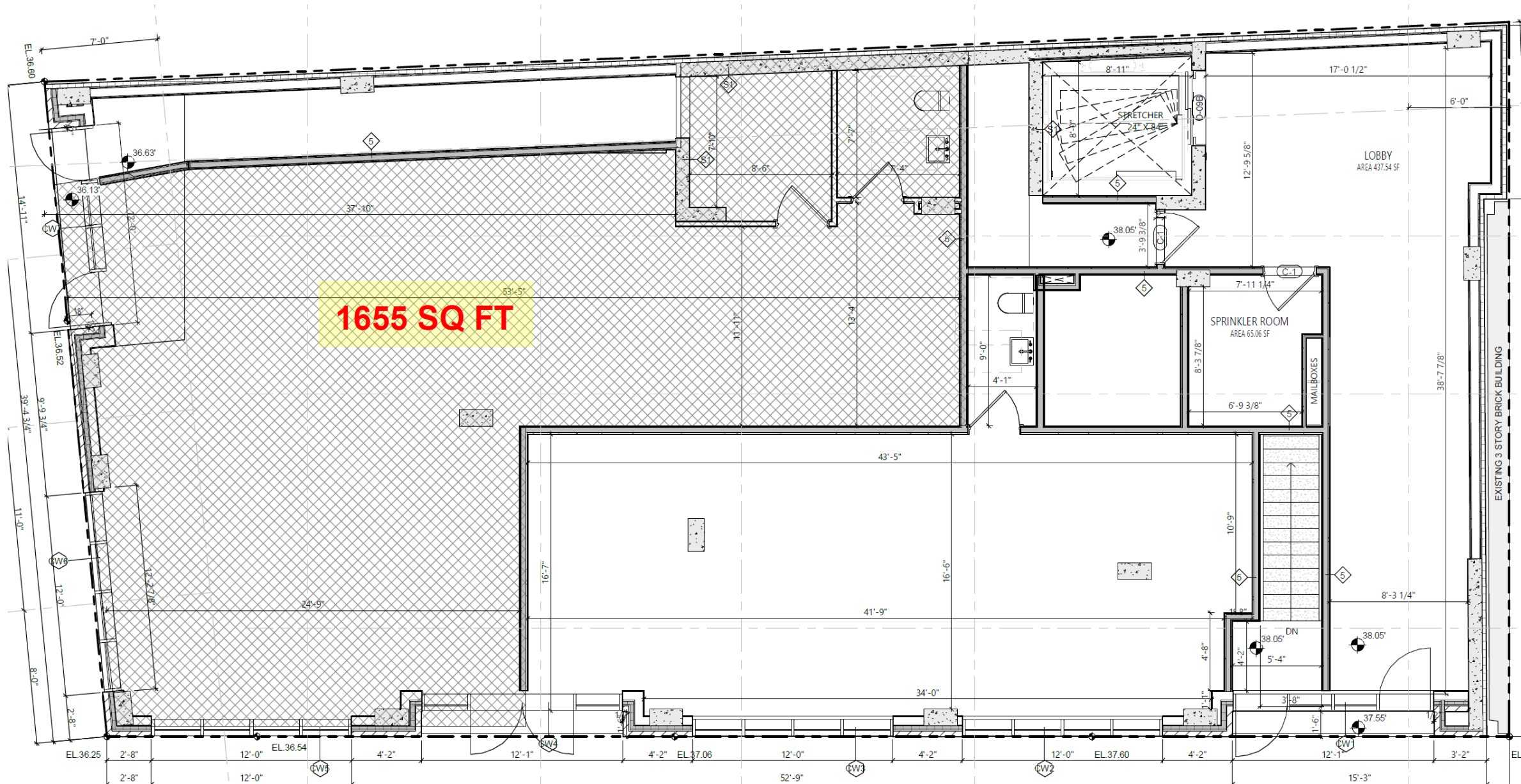


57 S 6th Street

Williamsburg, Brooklyn, NY

Ground Floor Retail Floorplan

Wythe Avenue

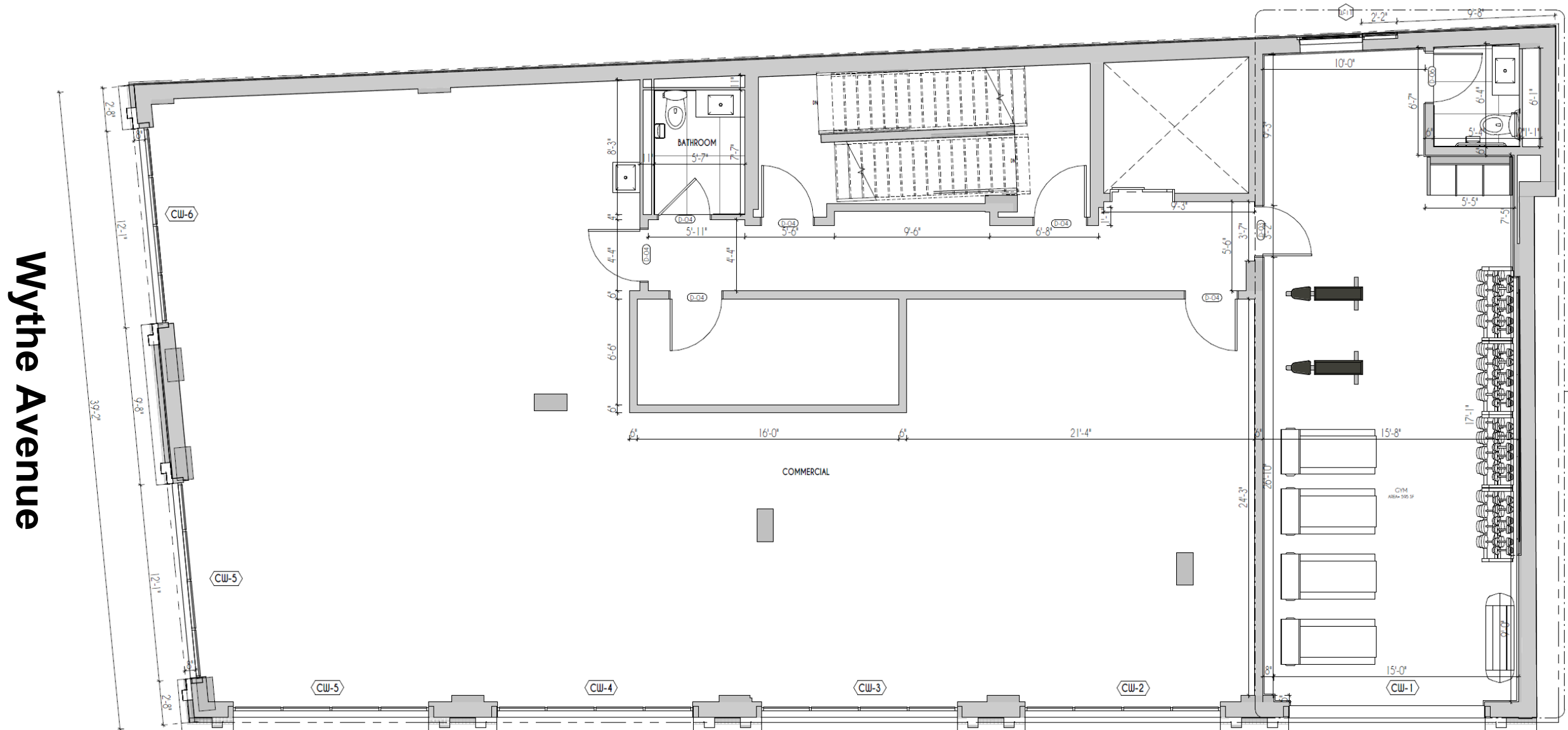


South 6th Street

57 S 6th Street

Williamsburg, Brooklyn, NY

Second Floor Retail/Office Floorplan



Wythe Avenue

South 6th Street

CONTACT

JOSH SLOAN

516-350-2621

JS@SLOAN-RE.COM