



890

Gentry Way
Reno NV 89502



MARMOT
PROPERTIES

Industrial Flex Investment Property
www.zadehconstructiongroup.com

890 Gentry Way

Industrial Flex Building

RENO, NV 89502



Batuhan Zadeh
DEVELOPER, BROKER

Batuhan@marmotproperties.com

Cell: (775) 313-1544

www.marmotproperties.com

Brokerage #B.145130

Property Management PM.0168698

GC B-2 \$3m Bid Limit #0090389



MARMOT
PROPERTIES



INVESTMENT OVERVIEW

Property Description

Welcome to 890 Gentry Way.

Conveniently located in by Kietzke Lane and Moana Lane, 890 Gentry Way boasts 11,915 of flex industrial space. Seize this unique investment opportunity with a prime commercial property currently leased to General Transmission Reno, a reputable and established transmission repair service. This property offers a strategic location in Reno, known for its vibrant business community and excellent accessibility.

The building, encompassing 11,915 square feet, is perfectly suited for automotive services with spacious work areas, high-quality equipment, and a customer-friendly reception area. The facility boasts 9 well-equipped service bays, an advanced diagnostic center, and ample parking space, catering to a high volume of clients.

General Transmission Reno, renowned for its exceptional transmission repair and automotive services, adds significant value to the property. Their strong local presence and commitment to quality service ensure steady foot traffic and business continuity. The tenant's robust online presence, highlighted by a comprehensive website featuring their services, expertise, and customer testimonials, speaks volumes of their business acumen and customer trust.

<https://generaltransmissionreno.com/>

PROPERTY HIGHLIGHTS

- High way frontage for massive signage benefit
- Almost every feature in the building has been updated
- Most desirable asset type in Reno, industrial/flex space



FINANCIAL ANALYSIS

Price	\$2,650,000	
Down Payment	\$1,275,000	48%
Number of Units	1	
Land Size	0.6 Acres	
Price Per SqFt Gross	\$222	
SqFt	11,915	
Zoning	General Commercial	
Approx. Year Built	1982	

RETURNS	CURRENT
CAP Rate	6.9%
GRM	15.4
Cash-on-Cash	7.2%
Debt Coverage Ratio	1.50

FINANCING	1ST LOAN
Loan Amount	\$1,375,000
Loan Type	Standard Commercial
Interest Rate	6.75%
Amortization	300
Year Due	2049

INCOME	CURRENT
Gross Scheduled Rent	\$184,087
Total Effective Rental	\$184,087
Income Other Income	\$0
Effective Gross Income	\$184,087
Less: Expenses	0% \$0
Net Operating Income	\$184,087
Cash Flow	\$184,087
Debt Service	-\$114,000
Net Cash Flow After Debt Service	\$70,087
Principal Reduction	\$21,856
Total Return	\$91,943

EXPENSES	CURRENT
Real Estate Taxes	\$6,500
Insurance	\$8,720
Elec/Gas	\$14,500
Water	\$1,200
Sewer	\$1,800
Trash Removal	\$3,600
Spectrum	\$1,920
Repairs/Maintenance/Janitorial	\$6,500
Management Fee (5.00%)	\$8,936
Total Expenses (Paid by Tenant)	\$53,576





General
Transmission



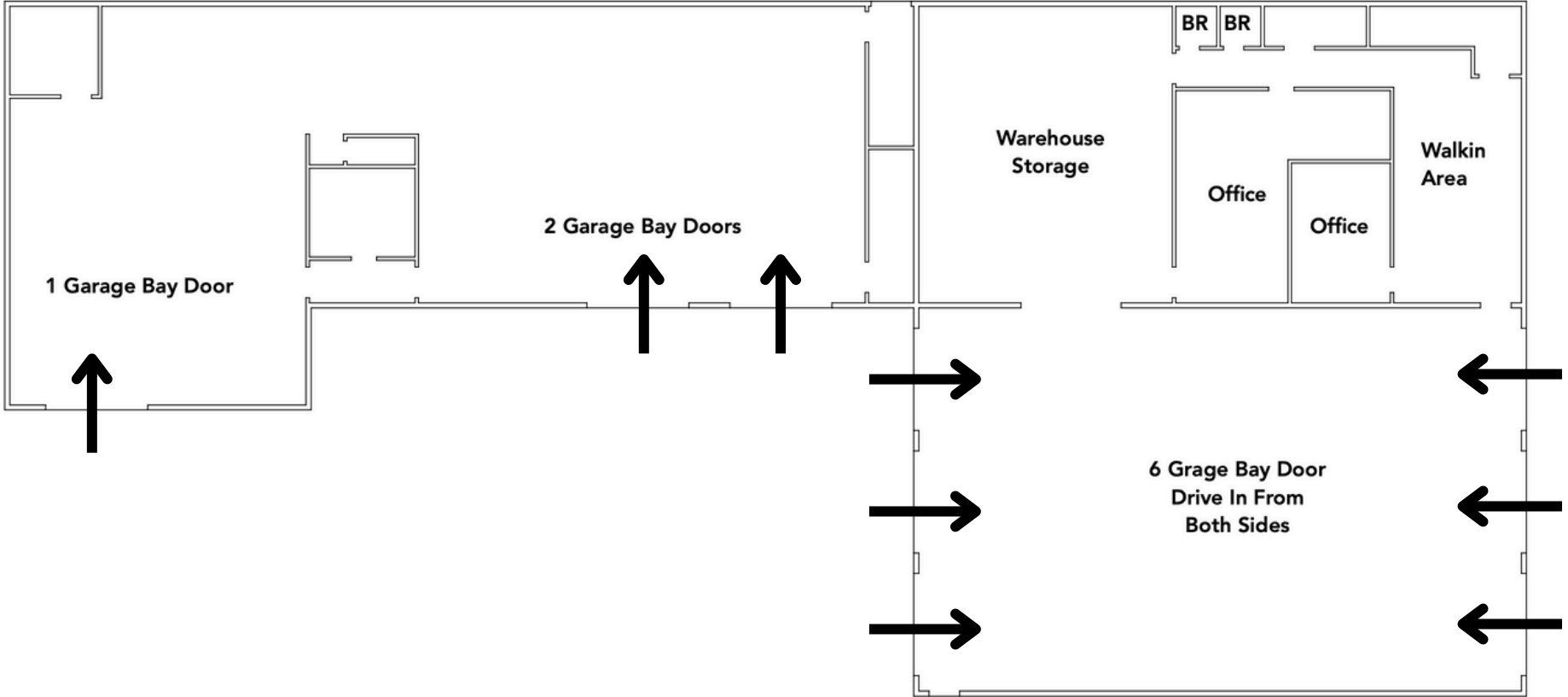
YOUR SIGN CAN BE HERE!
We offer a variety of sign options for your business. Call today for a free quote.

TINBERBELL
COMMERCIAL SIGNAGE

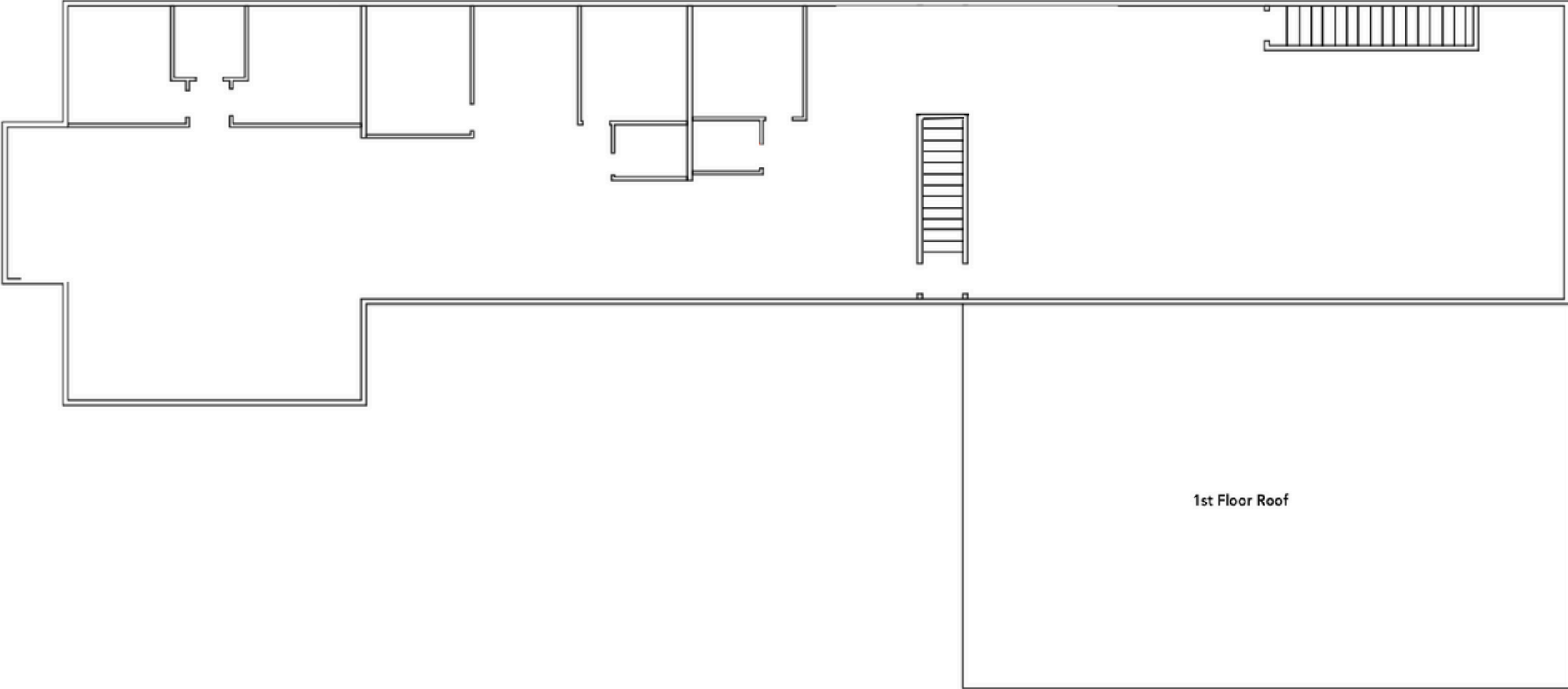




First Floor



Second Floor





**890
GENTRY WAY
RENO, NV 89502**



890
GENTRY WAY
RENO, NV 89502



Batuhan Zadeh

DEVELOPER, BROKER

Batuhan@marmotproperties.com

Cell: (775) 313-1544

www.marmotproperties.com

Brokerage #BS0145130

Property Management PM.0168698

GC B-2 \$3m Bid Limit #0090389



MARMOT
PROPERTIES

DISCLAIMER AND NON DISCLOSURE

CONFIDENTIALITY AGREEMENT

The information contained in the following Marketing Brochure is proprietary and strictly confidential. It is intended to be reviewed only by the party receiving it from the listing agent or team and should not be made available to any other person or entity without the written consent. This Marketing Brochure has been prepared to provide summary, unverified information to prospective purchasers, and to establish only a preliminary level of interest in the subject property. The information contained herein is not a substitute for a thorough due diligence investigation. The listing agent or team has not made any investigation, and make no warranty or representation, with respect to the income or expenses for the subject property, the future projected financial performance of the property, the size and square footage of the property and improvements, the presence or absence of contaminating substances, PCB's or asbestos, the compliance with State and Federal regulations, the physical condition of the improvements thereon, or the financial condition or business prospects of any tenant, or any tenant's plans or intentions to continue its occupancy of the subject property. The information contained in this Marketing Brochure has been obtained from sources we believe to be reliable; however, the listing agent or team has not verified, and will not verify, any of the information contained herein, nor has the listing agent or team conducted any investigation regarding these matters and they make no warranty or representation whatsoever regarding the accuracy or completeness of the information provided. All potential buyers must take appropriate measures to verify all of the information set forth herein.

Seller retains all rights and discretion to determine the offer and acceptance process including but not limited to the right to accept or reject any offer in its sole and absolute discretion. Seller shall only be bound by duly executed and enforceable agreements entered into, if any. ALL MATTERS PRIVILEGED AND CONFIDENTIAL.

NON-ENDORSEMENT NOTICE

The listing agent or team is not affiliated with, sponsored by, or endorsed by any commercial tenant or lessee identified in this marketing package. The presence of any corporation's logo or name is not intended to indicate or imply affiliation with, or sponsorship or endorsement by, said corporation of listing agent or team, its affiliates or subsidiaries, or any agent, product, service, or commercial listing of the agent's company, and is solely included for the purpose of providing tenant lessee information about this listing to prospective customers.

ALL PROPERTY SHOWINGS ARE BY APPOINTMENT ONLY. PLEASE CONSULT COMPANY FOR MORE DETAILS.

This information has been secured from sources we believe to be reliable, but we make no representations or warranties, express or implied, as to the accuracy of the information. References to square footage or age are approximate. Buyer must verify the information and bears all risk for any inaccuracies.