



# RETAIL SPACE FOR LEASE

1529 Sunrise Plaza Dr., Clermont, FL 34714

Contact: Trey Gravenstein  
 Vice President of Brokerage Services

E: Trey@FCPG.com  
 P: 407.872.0177 ext. 119

Contact: Michael Castrilli  
 Vice President of Brokerage Services

E: Michael@FCPG.com  
 P: 407.872.0177 ext. 130

**For Lease: \$21.00 / SF, NNN**

Suite 5: ± 2,000 SF



**47,000 AADT**  
 HWY 27

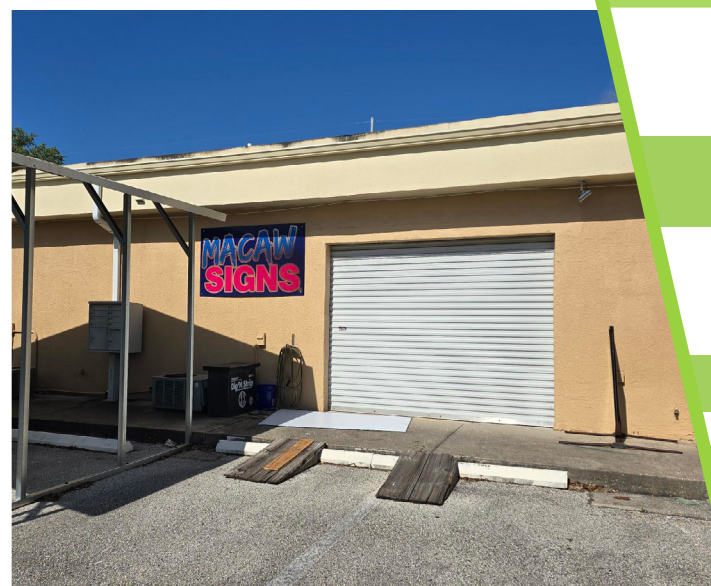
Retail space available with excellent frontage on busy Hwy 27  
 Clermont's primary north-south thoroughfare

3 Access points to the Center via US Hwy 27, Sunrise Plaza  
 Drive, and Advanced Auto Parts




Positioned in the "Four Corners / Cagan Crossings" trade  
 area less than 2-Miles from Kissimmee W Hwy 192

Monument signage and building façade signage facing  
 Hwy 27 available

Proximity to Walt Disney World and W Hwy 192 Attractions



## DEMOGRAPHICS

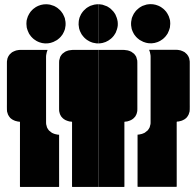
2025	 Total Population	 Total Households	 Average HH Income
5 Mins	15,294	6,178	\$83,096
10 Mins	44,904	17,078	\$95,724
15 Mins	82,127	30,526	\$102,022

615 E. Colonial Dr., Orlando, FL 32803 Phone: 407.872.0209 Fax: 407.426.8542

Information furnished regarding the subject property is believed to be accurate, but no guarantee or representation is made. References to square footage are approximate. This offering is subject to errors, omissions, prior sale or lease or withdrawal without notice. ©2025 First Capital Property Group, Licensed Real Estate Brokers & Managers.



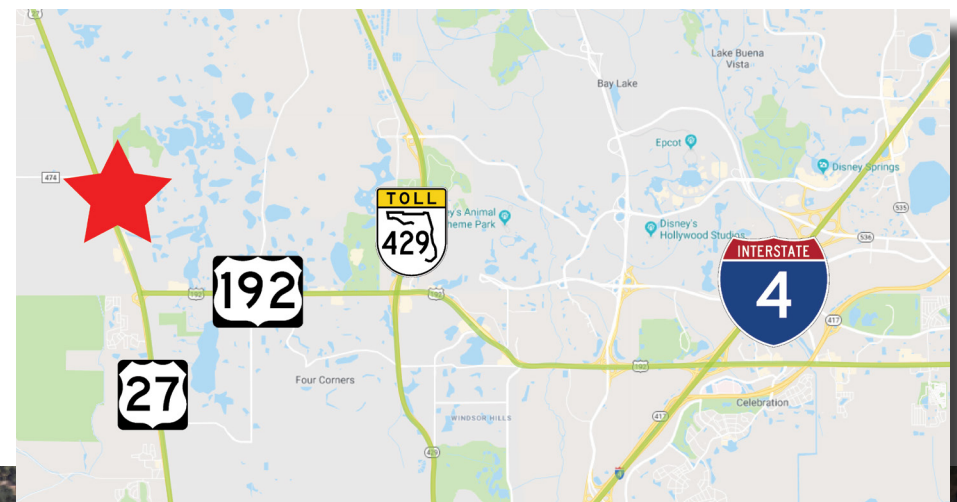
# THE NEIGHBORHOOD



**MEDIAN AGE (10 MINS)**  
37.2



**DAYTIME POPULATION (15 MINS)**  
59,968

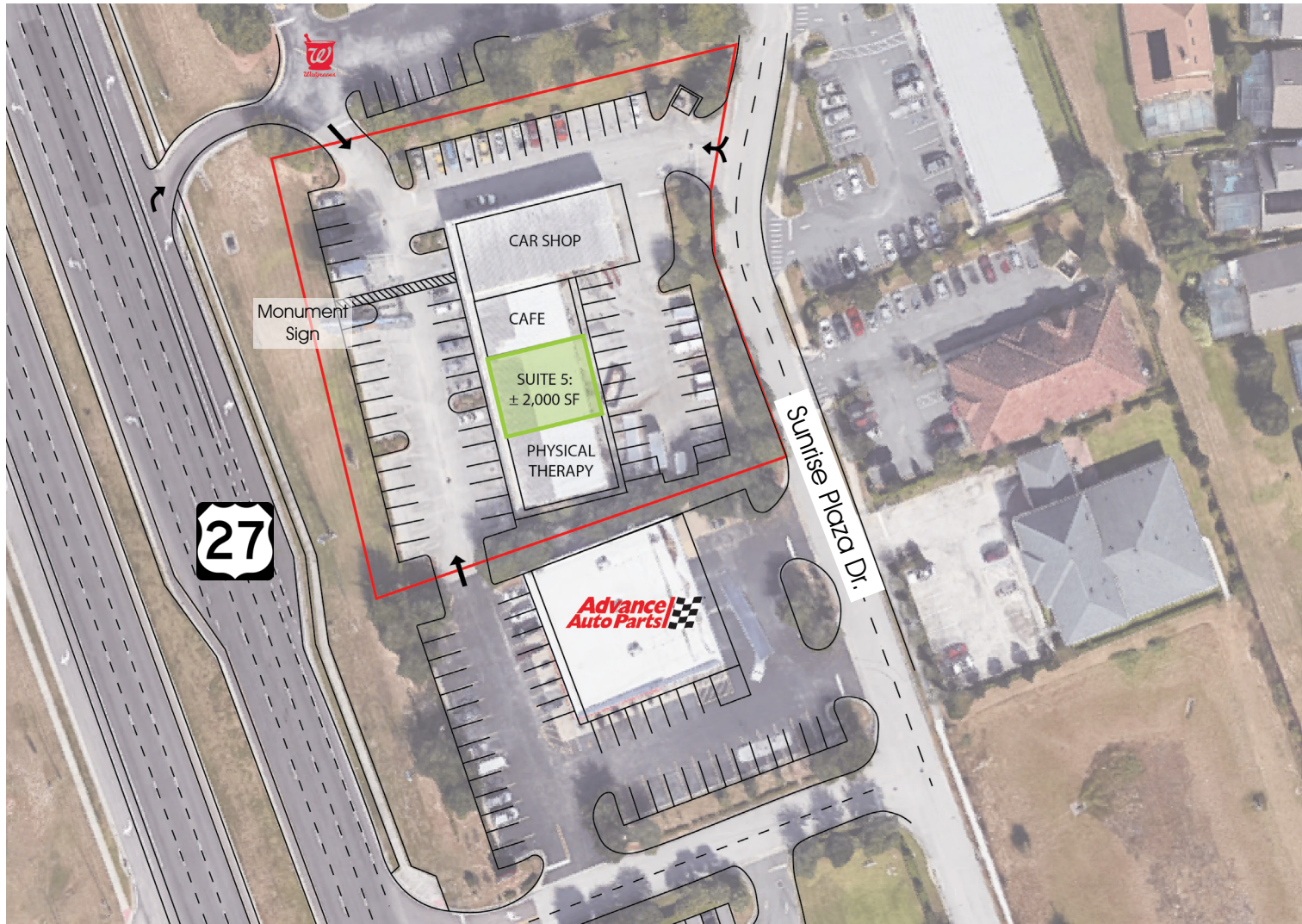


■ 615 E. Colonial Dr., Orlando, FL 32803 ■ Phone: 407.872.0209 ■ Fax: 407.426.8542 ■

Information furnished regarding the subject property is believed to be accurate, but no guarantee or representation is made. References to square footage are approximate. This offering is subject to errors, omissions, prior sale or lease or withdrawal without notice. ©2025 First Capital Property Group, Licensed Real Estate Brokers & Managers.



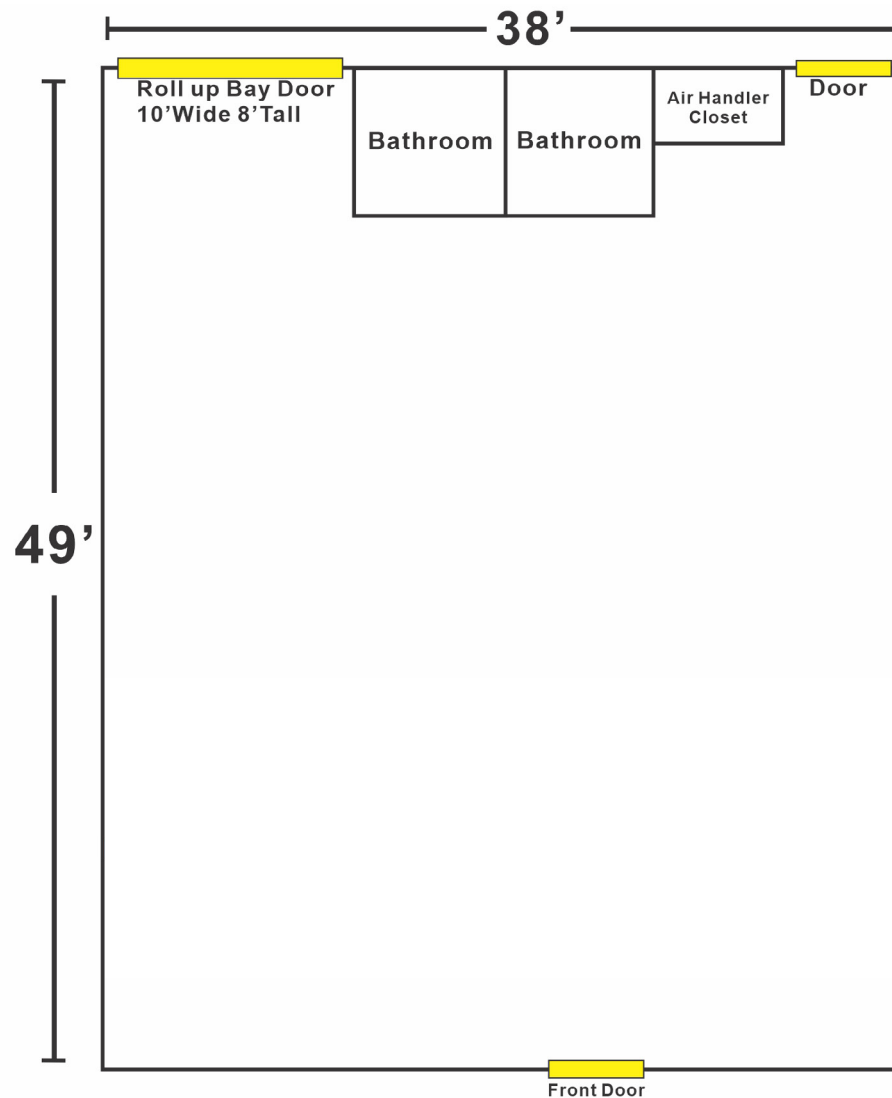
# SITE MAP



■ 615 E. Colonial Dr., Orlando, FL 32803 ■ Phone: 407.872.0209 ■ Fax: 407.426.8542 ■

Information furnished regarding the subject property is believed to be accurate, but no guarantee or representation is made. References to square footage are approximate. This offering is subject to errors, omissions, prior sale or lease or withdrawal without notice. ©2025 First Capital Property Group, Licensed Real Estate Brokers & Managers.

## SUITE 5: ± 2,000 SF



■ 615 E. Colonial Dr., Orlando, FL 32803 ■ Phone: 407.872.0209 ■ Fax: 407.426.8542 ■

Information furnished regarding the subject property is believed to be accurate, but no guarantee or representation is made. References to square footage are approximate. This offering is subject to errors, omissions, prior sale or lease or withdrawal without notice. ©2025 First Capital Property Group, Licensed Real Estate Brokers & Managers.