



# 1440 NORTH DAYTON STREET

development by **SOI:01**



# 1440 NORTH DAYTON STREET

Building Size  
65,364 square feet

Divisible to  
2,101 square feet

Lower Level  
10,756 square feet

First Floor  
12,911 square feet

Second Floor  
15,263 square feet

Third Floor  
15,263 square feet

Fourth Floor  
11,170 square feet

- Concrete Loft Office
- New 4th floor addition
- 12-to-13 foot ceilings
- Sweeping window expanse
- Impressive lobby entrance
- New passenger elevator
- New HVAC systems
- Brand new restrooms
- Bike rooms with shower

Located in the dynamic North and Clybourn corridor, 1440 Dayton is superbly sited. Tree-lined streets and wide sidewalks frame a completely renovated building. Originally built in 1924 for the Seng (Furniture Parts) Company, 1440 Dayton is solidly constructed with concrete floors and pillars, allowing for massive, unobstructed views of Chicago's skyline.

Completely Renovated in 2017



Private side entrance allows for door-side passenger drop off which is also handicap accessible.

# 1440 NORTH DAYTON STREET

In the center of it all.

Situated in the dynamic and centrally-located North and Clybourn corridor, 1440 North Dayton is located right off the I-90 expressway (North Avenue or Division Street exits); 2 blocks from the #8 Halsted CTA bus, and 3 blocks from the CTA Red Line (North Avenue Station).



## The history behind 1440 North Dayton

1440 North Dayton was originally a manufacturing facility for The Seng Company, who introduced the systematic production of metal parts to supply the growing industry of mass produced furniture. The company thrived with the popularity of the company's most familiar yet least known contribution to domestic American comfort: a mechanical hinge that is at the heart of all sofa-beds.

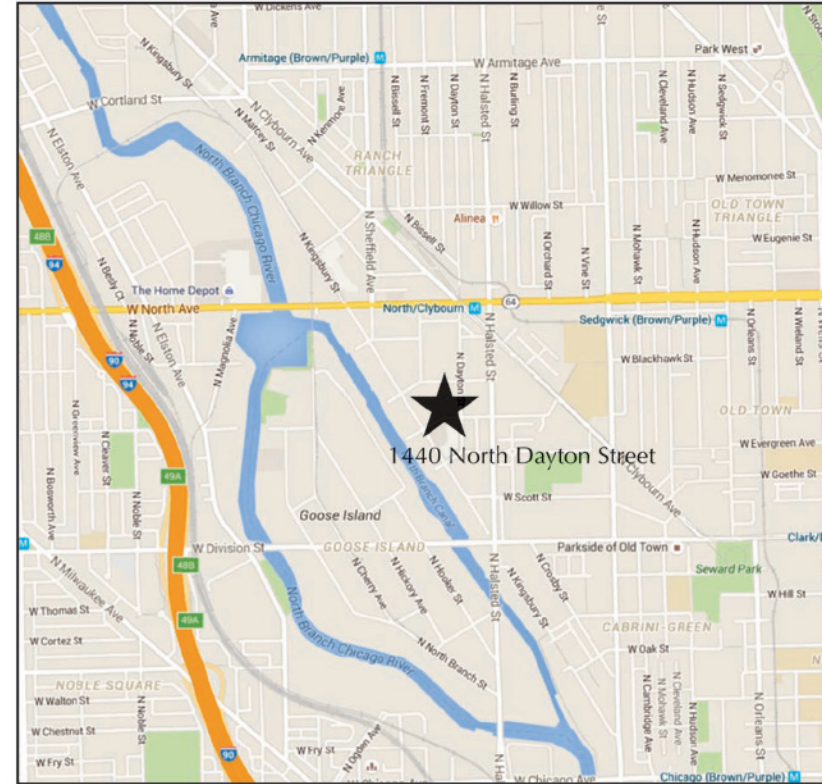
In the fall of 1924, Seng Company hired architect William G. Barfield to design a modern factory building. With advancements in concrete building technology, and an interest in open, airy and light-filled work places, the Seng Company Factory Building #9 is a handsome example of a "daylight" factory, an innovative industrial building type built of reinforced concrete with flexible open loft-like interior spaces for maximum flexibility, and filled with windows for maximum daylight to aid in manufacturing.



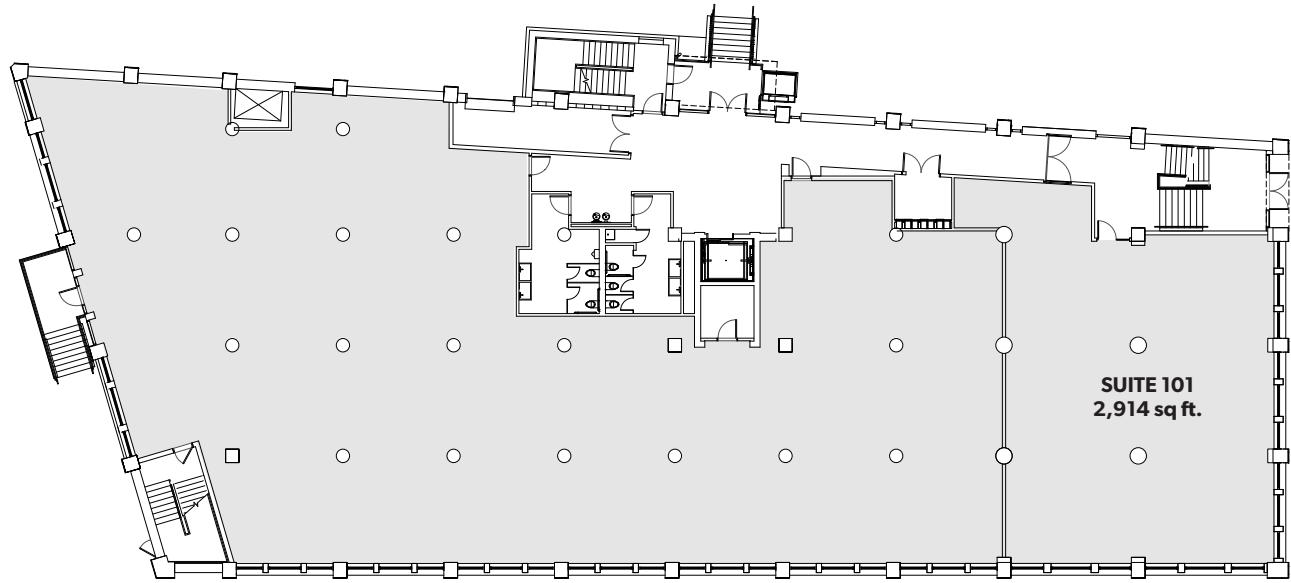
# 1440 NORTH DAYTON STREET

## NEARBY:

- Apple Store
- Whole Foods
- New City Shopping Center
- Crate & Barrel
- Design Within Reach
- Starbucks
- Mariano's
- REI
- Dick's Sporting Goods
- Erehwon
- Buy Buy Baby
- Best Buy, DSW, Sur La Table, Williams Sonoma, Nordstrom Rack, Saks Off 5th
- ArcLight Theaters, Improv Olympics, and Steppenwolf
- British School and Fusion Academy
- 18 Restaurant options within a 5 minute walk

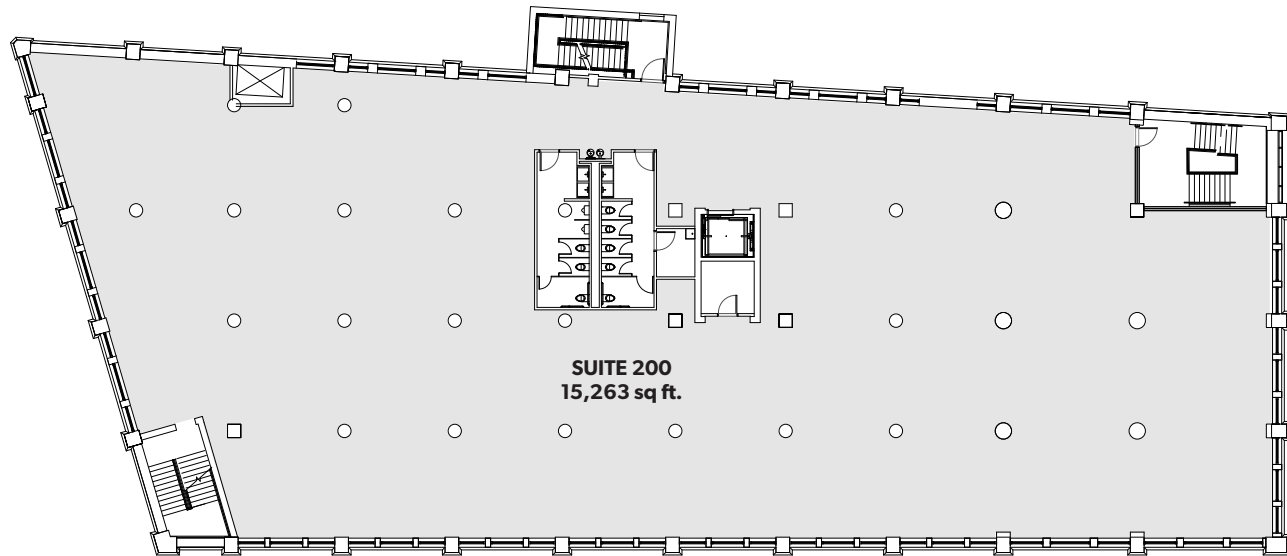


**1440**  
NORTH  
DAYTON  
STREET  
FLOOR  
PLANS



**SUITE 101**  
2,914 sq ft.

1st Floor



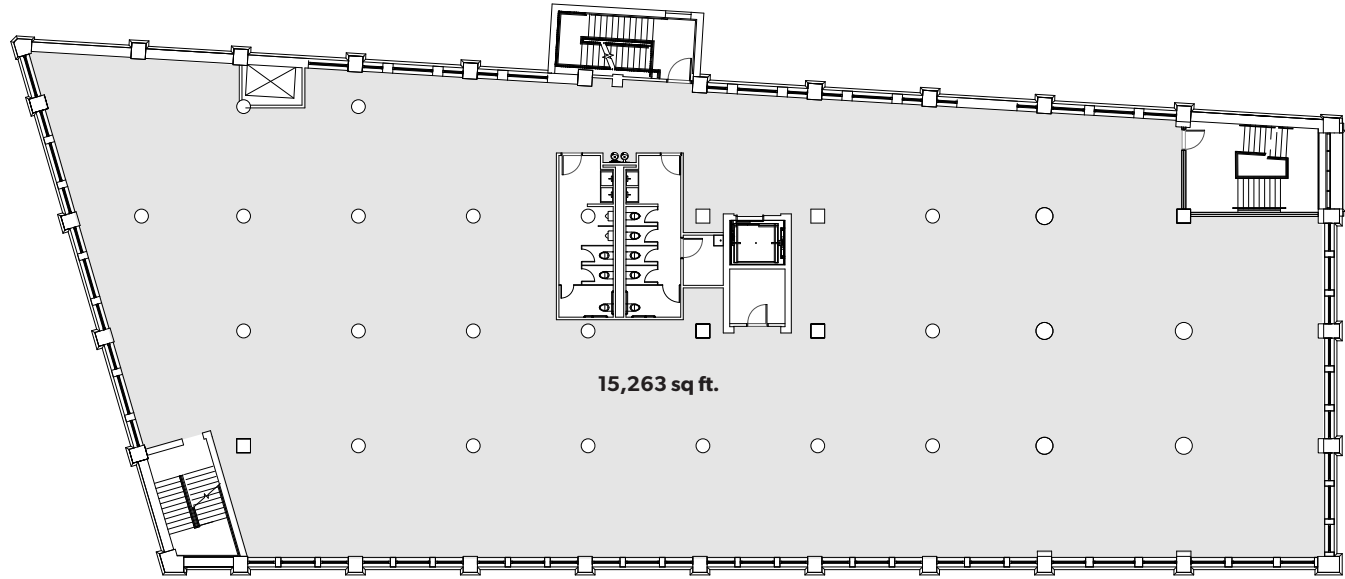
**SUITE 200**  
15,263 sq ft.

2nd Floor

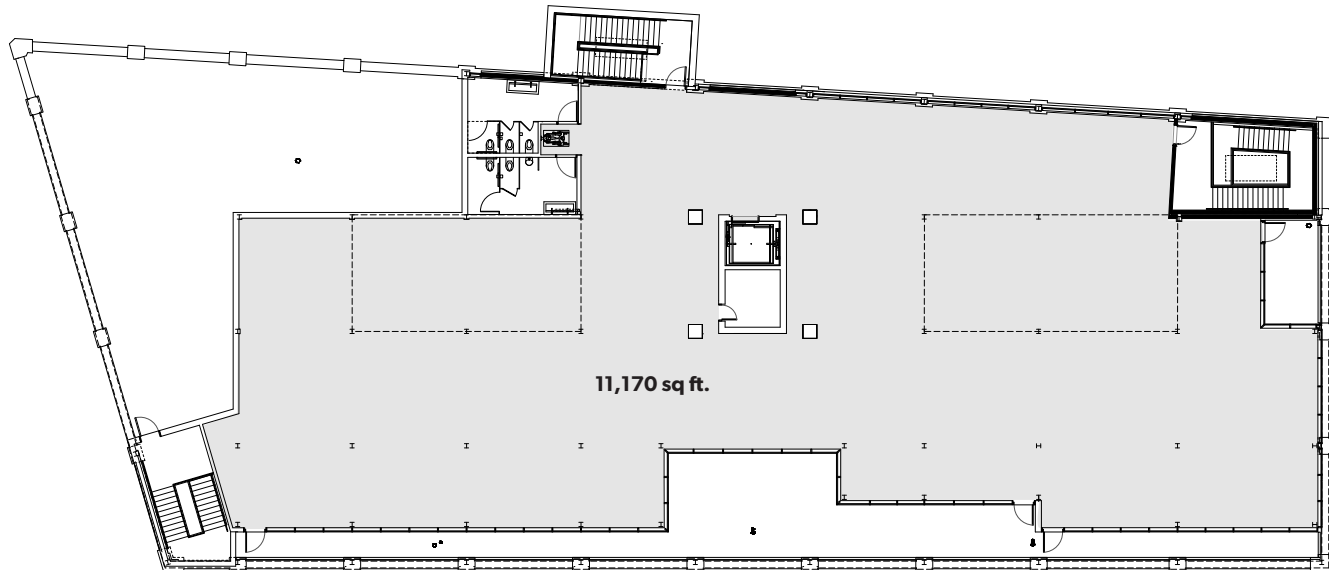
For Leasing information  
contact:  
**Scott Sessa**  
**Ameritus**  
312.332.9920  
ssessa@askAmeritus.com

[1440Dayton.com](http://1440Dayton.com)

**1440**  
NORTH  
DAYTON  
STREET  
FLOOR  
PLANS



3rd Floor

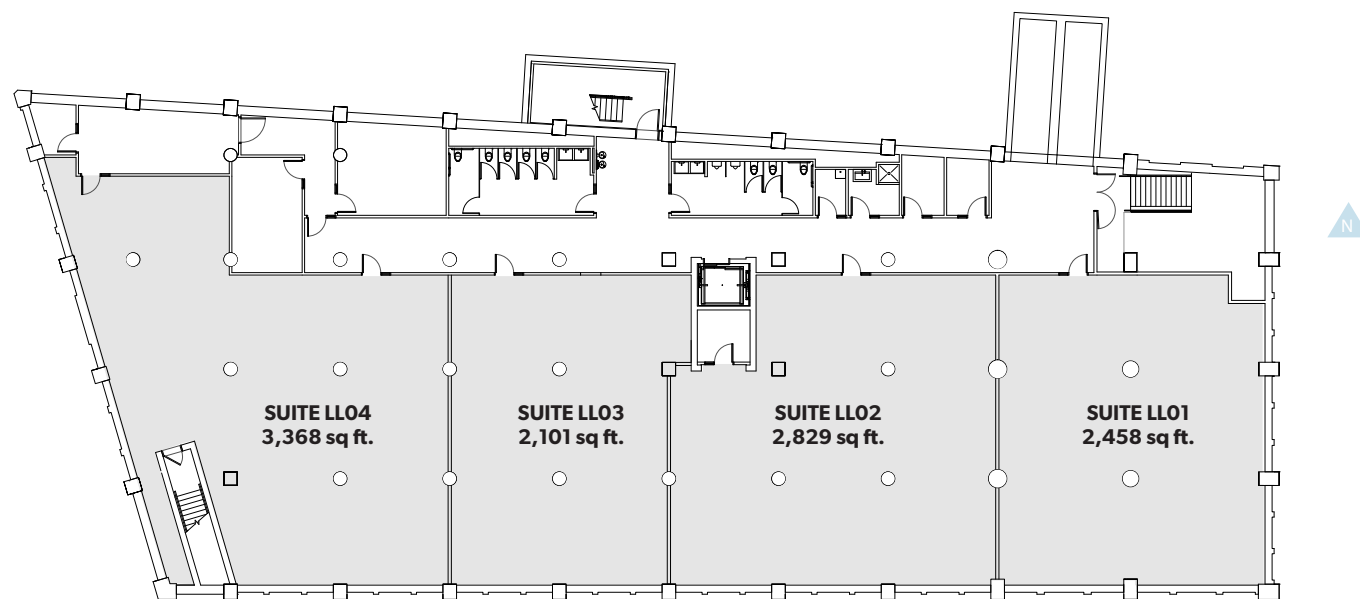


4th Floor

For Leasing information  
contact:  
**Scott Sessa**  
**Ameritus**  
312.332.9920  
ssessa@askAmeritus.com

[1440Dayton.com](http://1440Dayton.com)

**1440**  
NORTH  
DAYTON  
STREET  
FLOOR  
PLANS



Lower Level

For Leasing information  
contact:  
**Scott Sessa**  
**Ameritus**  
312.332.9920  
ssessa@askAmeritus.com

[1440Dayton.com](http://1440Dayton.com)

# 1440 NORTH DAYTON STREET

Completely renovated, with a unique eye for architectural details and interior design.

---

For Leasing information contact:  
**Scott Sessa**  
**Ameritus**  
312.332.9920  
ssessa@askAmeritus.com

[1440Dayton.com](http://1440Dayton.com)





For Leasing information contact:

**Scott Sessa**

**Ameritus**

312.332.9920

ssessa@askAmeritus.com

1440Dayton.com

**1440** NORTH DAYTON STREET

development by **SOI:01**