



2701 ALEX LEE BLVD, FLORENCE, SC 29506

# ***FLORENCE OFFICE SPACE***

OFFICE | 7,145 SF | \$22/SF/YR | \$1.83/SF/MO



**CLASS:**

A

**PROPERTY TYPE:**

OFFICE

**LAND ACRES:**

17

**YEAR BUILT:**

2009

**VACANT SQFT:**

7,145

**STORIES:**

1

**TENANCY:**

SINGLE

**BUILDINGS:**

1

**TOTAL BUILDING SQFT:**

74,186

**POWER:**

PDEC

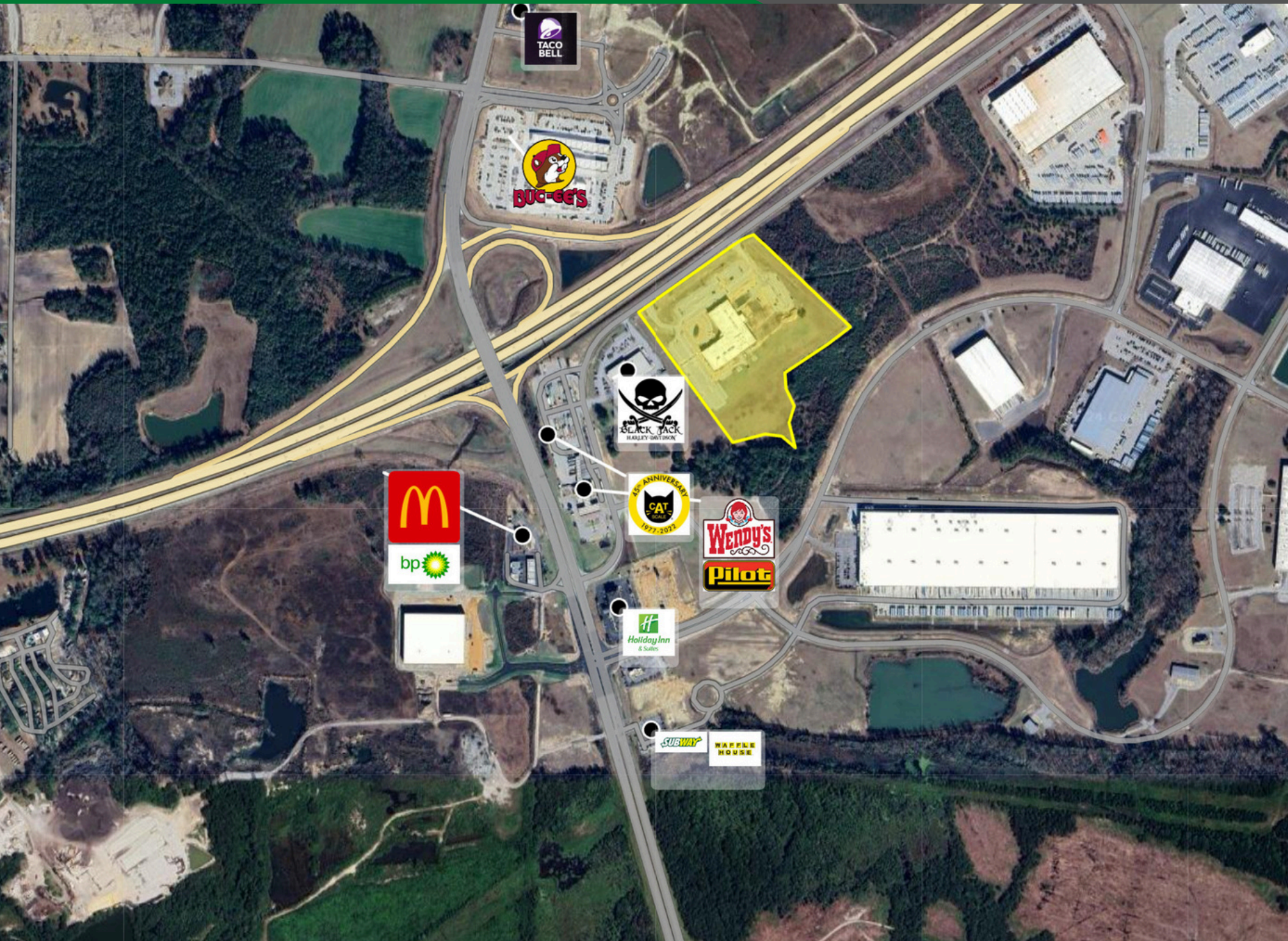


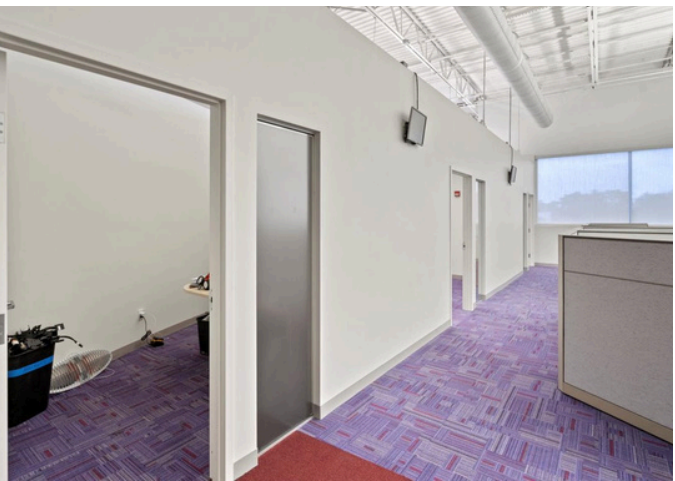
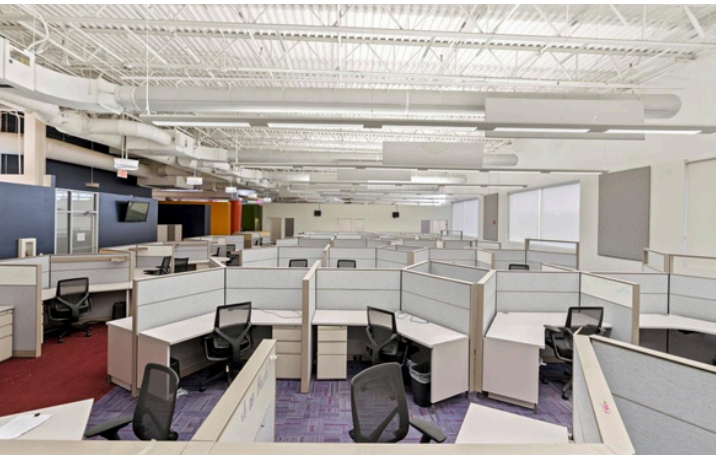
<b>RATE:</b>	<b>LEASE TYPE:</b>	<b>RATE (PER SF):</b>	<b>TOTAL MONTHLY RENT:</b>	<b>PARKING:</b>	<b>USF:</b>	<b>RSF:</b>
\$22/SF/YR	GROSS	\$22	\$13,099.16	AMPLE	7,145	7,145

CONTEMPORARY WORKSPACES WITH THIS 7,145 SQUARE FEET OF PRIME, CUSTOMIZABLE SPACE, BOASTING NOT ONLY UNPARALLELED ACCESSIBILITY BUT ALSO A HOST OF AMENITIES TO ELEVATE YOUR BUSINESS OPERATIONS. CLASS A OFFICE SPACE CONVENIENTLY LOCATED AT I-95 AND US HWY 327

EASILY ACCOMMODATING 60+ WORKSTATIONS, THIS LAYOUT IS DESIGNED TO MAXIMIZE FUNCTIONALITY WHILE PROVIDING AMPLE ROOM FOR GROWTH AND ADAPTATION. FROM PRIVATE OFFICES TO COLLABORATIVE BREAKOUT AREAS, THIS SPACE CAN BE TAILORED TO SUIT YOUR UNIQUE WORKFLOW AND ORGANIZATIONAL CULTURE.

LOCATED IN PEE DEE COMMERCE CITY IN THE HARVEST HOPE BUILDING.







**PLC Commercial**

1943 Hoffmeyer Rd., Suite A

Florence, SC 29541

Main: (843) 702-9685

[plccommercial.com](http://plccommercial.com)

**Chris Scott**

[Chris@plccommercial.com](mailto:Chris@plccommercial.com)

(803) 606-2500

**Ken Jackson, CCIM**

[Ken@plccommercial.com](mailto:Ken@plccommercial.com)

(843) 260-6111

**John Etheridge**

[John@plccommercial.com](mailto:John@plccommercial.com)

(843) 229-3903

**Rhett Spencer, CCIM**

[Rhett@plccommercial.com](mailto:Rhett@plccommercial.com)

(843)687-4649